

**PLEASE CHECK WWW.MOLEX.COM FOR LATEST PART INFORMATION**

**Part Number:** [0190080022](#)  
**Status:** **Active**  
**Description:** Flag Krimptite™ Quick Disconnect, Female, for 14-16 (2.00-1.30) Wire, Mylar Tape, Tab 4.75mm (.187") x 0.51mm (.020)

**Documents:**

[Drawing \(PDF\)](#) [RoHS Certificate of Compliance \(PDF\)](#)

**Agency Certification**

CSA LR18689  
 UL E79133

**General**

Product Family Quick Disconnects  
 Series [19008](#)  
 Crimp Quality Equipment Yes  
 Product Name Krimptite™  
 Type Quick Disconnect

**Physical**

Barrel Type Closed  
 Gender Female  
 Glow-Wire Compliant No  
 Insulation None  
 Lock to Mating Part None  
 Material - Metal Brass  
 Orientation Flag  
 Packaging Type Adhesive Tape on Reel  
 Polarized to Mating Part No  
 Tab Thickness 0.51mm (.020")  
 Tab Width 4.75mm (.187")  
 Temperature Range - Operating Per Wire Specification  
 Wire Size AWG 14, 16  
 Wire Size mm² 1.30 - 2.00

**Electrical**

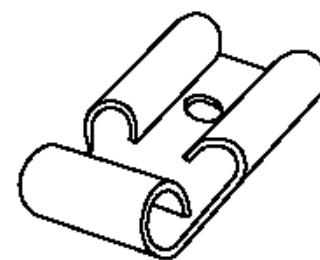
Voltage - Maximum Per Wire Specification

**Material Info**

Old Part Number BB-1148T

**Reference - Drawing Numbers**

Sales Drawing CDFLG187, SD-19008-013



Series

image - Reference only

**EU RoHS**

**ELV and RoHS Compliant**  
**REACH SVHC Contains SVHC: No**  
**Halogen-Free Status Not Reviewed**

**China RoHS**



**Need more information on product environmental compliance?**

Email [productcompliance@molex.com](mailto:productcompliance@molex.com)  
 For a multiple part number RoHS Certificate of Compliance, [click here](#)

Please visit the [Contact Us](#) section for any non-product compliance questions.

**Search Parts in this Series**

[19008Series](#)

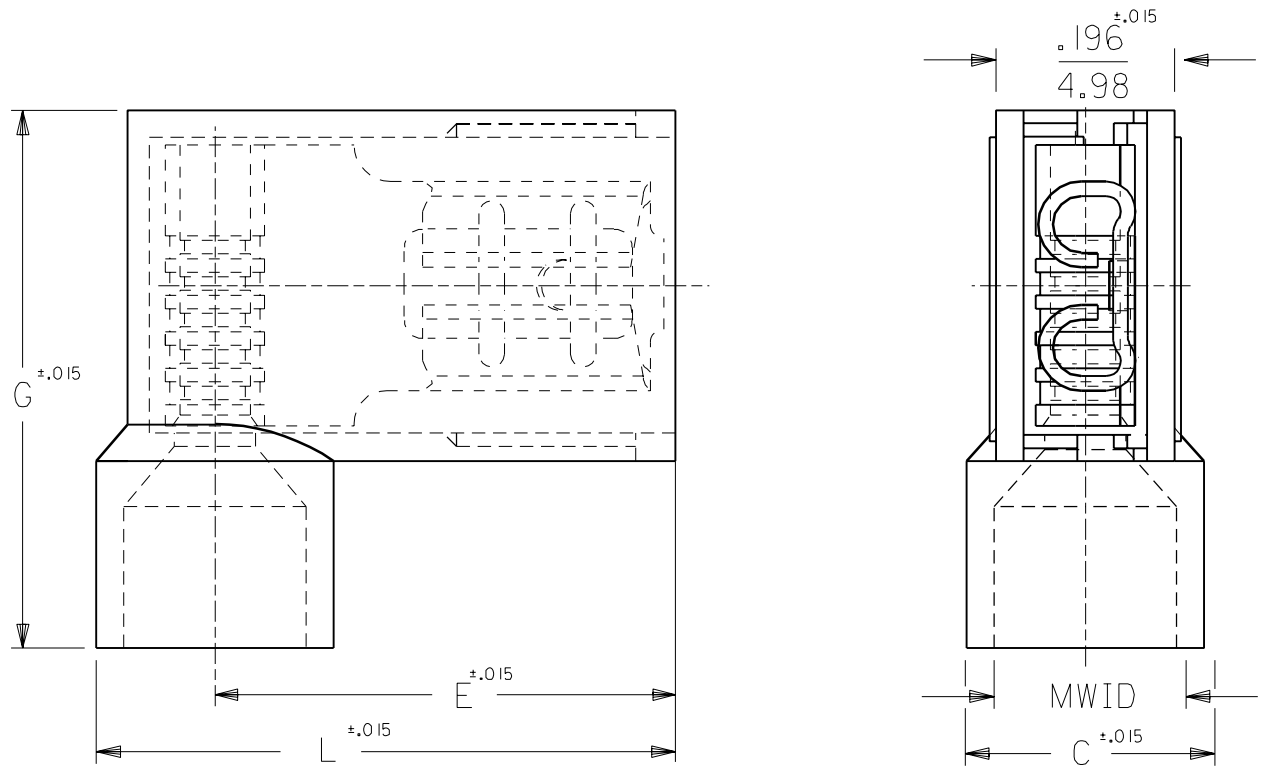
**Application Tooling | [FAQ](#)**

*Tooling specifications and manuals are found by selecting the products below. Crimp Height Specifications are then contained in the Application Tooling Specification document.*

**Global**

Description	Product #
ATP Perishable Tool Kit used in ATP presses that process product on tape	<a href="#">0190270085</a>

DRWG. NO. CUST. DRWG.



PART NO.	AWG	COLOR	MWID	TAB SIZE	L	G	E	C
AA-2222	22-18	RED	.176/4.47	.187x.020	.630/16.00	.585/14.86	.512/13.00	.236/5.99
AA-2222-X	22-18	RED	.240/6.10	.187x.020	.662/16.81	.625/15.88	.512/13.00	.300/7.62
AA-2223	22-18	RED	.176/4.47	.187x.032	.630/16.00	.585/14.86	.512/13.00	.236/5.99
AA-2223-X	22-18	RED	.240/6.10	.187x.032	.662/16.81	.625/15.88	.512/13.00	.300/7.62
BB-2224	16-14	BLUE	.200/5.08	.187x.020	.630/16.00	.585/14.86	.500/12.70	.260/6.60
BB-2224-X	16-14	BLUE	.265/6.73	.187x.020	.670/17.02	.625/15.88	.500/12.70	.325/8.26
BB-2225	16-14	BLUE	.200/5.08	.187x.032	.630/16.00	.585/14.86	.500/12.70	.260/6.60
BB-2225-X	16-14	BLUE	.265/6.73	.187x.032	.670/17.02	.625/15.88	.500/12.70	.325/8.26

A	TWO METRIC DIM. WERE 15.75 NOW 16.00 06/05/92 RCM
LTR.	REVISIONS

NOTES:  
 1. MWID = MAX. WIRE INSULATION DIA.  
 2. ALL DIMENSIONS = INCHES/MM

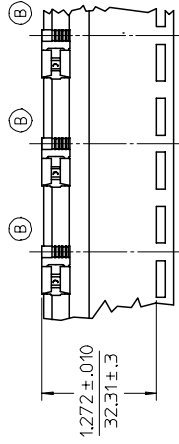
DIMENSIONS SHOWN (METRIC) INCH	
UNLESS OTHERWISE SPECIFIED TOLERANCES: ANGULAR ± 1/2°	
	INCH METRIC
3 PLACE	± .005 ± ---
2 PLACE	± .01 ± 0.13
1 PLACE	± --- ± 0.25
DRAFT WHERE APPLICABLE MUST REMAIN WITHIN DIMENSIONS	
DRWG. BY RM	CHK'D. BY JM
APP'D. BY FP	SCALE 5: 1

REVISE ONLY ON CAD SYSTEM

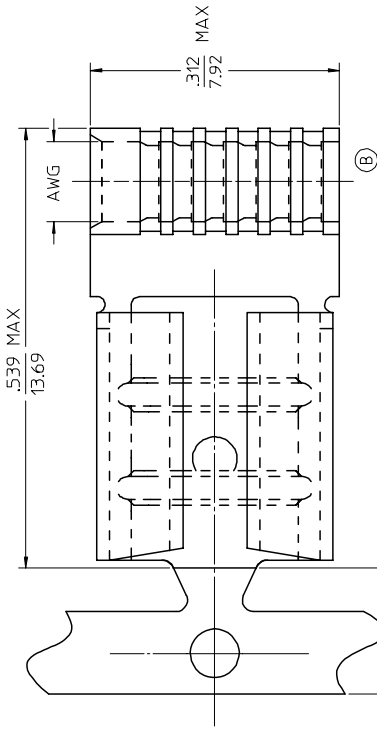
TITLE  
 FLAG  
 FULLY INSULATED  
 .187x.020, & .032 TAB

molex ETC INC. PINELLAS PARK, FLA. 33781 U.S.A.	SHEET NO.	DATE 07/26/89
PART NO.	DRWG. NO. CUST. DRWG.	
FILE NAME CDFLG187	THIS DRAWING CONTAINS INFORMATION THAT IS PROPRIETARY TO MOLEX-ETC INC. AND SHOULD NOT BE USED WITHOUT WRITTEN PERMISSION.	DIV. SIZE A

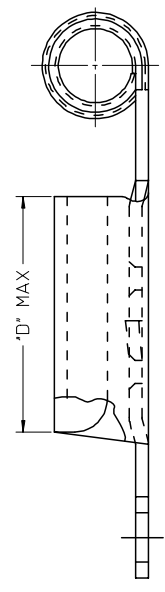
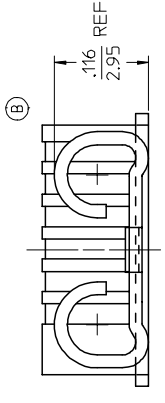
13	12	11	10	9	8	7	6	5	4	3	2	1		
J	I	H	G	F	E	D	C	B	A					
MATERIAL NUMBER ON STRIP	ENGINEERING NUMBER ON STRIP	MATERIAL NUMBER LOOSE PIECE	ENGINEERING NUMBER LOOSE PIECE	TAPE MATERIAL NUMBER	ENGINEERING NUMBER	TAB SIZE	D MAX							
190080008	AAZ-1147	190080001	AA-1147	190080004	AA-1147T	.187 X .020	.257/6.53							
190080009	AAZ-1147-032	190080002	AA-1147-032	190080003	AA-1147-032T	.187 X .032	.257/6.53							
190080013	AAZ-1158	190080006	AA-1158	190080007	AA-1158T	.250 X .032	.312/7.92							
190080028	BBZ-1148	190080019	BB-1148	190080022	BB-1148T	.187 X .020	.257/6.53							
190080029	BBZ-1148-032	190080020	BB-1148-032	190080021	BB-1148-032T	.187 X .032	.257/6.53							
190080031	BBZ-1159	190080024	BB-1159	190080027	BB-1159T	.250 X .032	.312/7.92							



PARTS ON TAPE



METAL CARRIER STRIP  
 .165 REF  
 4.19



SALES DRAWING

NOTES:

1. MATERIAL: BRASS .016/0.04 THICK. PLATING ELECTRO-TIN.
2. TAB SIZE SEE CHART.
3. WIRE AWG SEE CHART.
4. PART IS ROHS COMPLIANT.

QUALITY SYMBOLS	GENERAL TOLERANCES (UNLESS SPECIFIED)	DIMENSION STYLE	SCALE	DESIGN UNITS	THIRD ANGLE PROJECTION
4 PLACES ± 0.005 3 PLACES ± 0.005 2 PLACES ± 0.01 1 PLACE ± 0.25	± .005 ± .01 ± .01 ± .25	IN/MM	NONE	INCH	FLAG QD
APPROVED BY: R. DEROSS	DATE: 2005/01/25	DRAWN BY: BENDERLE	DATE: 2005/01/25	22-18 AWG & 16-14 AWG .187X.020&.032,.250X.032	
APPROVED BY: R. DEROSS	DATE: 2005/01/25	CHECKED BY: R. DEROSS	DATE: 2005/01/25	MOLEX INCORPORATED	
APPROVED BY: R. DEROSS	DATE: 2005/01/25	APPROVED BY: R. DEROSS	DATE: 2005/01/25	DOCUMENT NO. SD-19008-013	SHEET NO. 1 OF 1
APPROVED BY: R. DEROSS	DATE: 2005/01/25	APPROVED BY: R. DEROSS	DATE: 2005/01/25	THIS DRAWING CONTAINS INFORMATION THAT IS PROPRIETARY TO MOLEX INCORPORATED AND SHOULD NOT BE USED WITHOUT WRITTEN PERMISSION	