



Customer :

DATE : Dec. 20, 2007

SAMSUNG TFT-LCD
MODEL : LTA320AB02

The Information Described in this Specification is Preliminary and can be changed without prior notice

NOTE :

Customer's Approval	
SIGNATURE	DATE

APPROVAED BY <i>Kyungheon Ko</i>	DATE Dec. 20, 2007
PREPARED BY <i>Byungsun Park</i>	DATE Dec. 20, 2007

LCD Business

Samsung Electronics Co . , LTD.

MODEL	LTA320AB02	Doc. No	06-000-G-071220	Page	1/26
-------	------------	---------	-----------------	------	------

Contents

Revision History	(3)
General Description	(4)
General Information	(4)
1. Absolute Maximum Ratings	(5)
2. Optical Characteristics	(7)
3. Electrical Characteristics	(10)
3.1 TFT LCD Module	
3.2 Back Light Unit	
3.3 Inverter Input & Specification	
4. Input Terminal Pin Assignment	(12)
4.1 Input Signal & Power	
4.2 Inverter Input Pin Configuration	
4.3 Inverter Input Power Sequence	
4.4 LVDS Interface	
4.5 Input Signals, Basic Display Colors and Gray Scale of Each Color	
5. Interface Timing	(17)
5.1 Timing Parameters (DE only mode)	
5.2 Timing Diagrams of interface Signal (DE only mode)	
5.3 Power ON/OFF Sequence	
6. Outline Dimension	(20)
7. Packing	(22)
8. Marking & Others	(23)
9. General Precaution	(24)
9.1 Handling	
9.2 Storage	
9.3 Operation	
9.4 Operation Condition Guide	
9.5 Others	

MODEL

LTA320AB02

Doc. No

06-000-G-071220

Page

2/26

Revision History

Date	Rev. No	Page	Summary
Dec. 20, 2007	000	all	First issued

MODEL	LTA320AB02	Doc. No	06-000-G-071220	Page	3/26
--------------	-------------------	----------------	------------------------	-------------	-------------

General Description

Description

LTA320AB02 is a color active matrix liquid crystal display (LCD) that uses amorphous silicon TFT (Thin Film Transistor) as switching components. This model is composed of a TFT LCD panel, a driver circuit and a back light unit. The resolution of a 32.0" is 1366 x 768 and this model can display up to 16.7 million colors with wide viewing angle of 89° or higher in all directions. This panel is intended to support applications to provide an excellent performance for Flat Panel Display such as Home-alone Multimedia TFT-LCD TV and High Definition TV.

Features

- RoHS compliance (Pb-free)
- High contrast & aperture ratio with wide color gamut
- PVA (Patterned Vertical Align) mode
- Wide viewing angle ($\pm 178^\circ$)
- High speed response
- HD resolution (16:9)
- Low Power consumption
- Direct Type 12 CCFLs (Cold Cathode Fluorescent Lamp)
- DE (Data Enable) mode
- LVDS (Low Voltage Differential Signaling) interface (1 pixel/clock)

General Information

Items	Specification	Unit	Note
Module Size	760.0(H _{TYP}) x 450.0(V _{TYP})	mm	± 1.0 mm
	50.5(D _{MAX})		
Weight	7,500 (max)	g	
Pixel Pitch	0.51075(H) x 0.51075(W)	mm	
Active Display Area	697.6845(H) x 392.256(V)	mm	
Surface Treatment	Haze 14% , Hard-coating (3H)	-	
Display Colors	8 bit - 16.7M	colors	
Number of Pixels	1366 x 768	pixel	
Pixel Arrangement	RGB Horizontal stripe	-	
Display Mode	Normally Black	-	
Luminance of White	450 (Typ.)	cd/m ²	

MODEL

LTA320AB02

Doc. No

06-000-G-071220

Page

4/26

1. Absolute Maximum Ratings

If the condition exceeds maximum ratings, it can cause malfunction or unrecoverable damage to the device.

Item	Symbol	Min.	Max.	Unit	Note
Power Supply Voltage	V_{DD}	10.8	13.2	V	(1)
Storage temperature	T_{STG}	-20	60	°C	(2)
Glass surface temperature (Operation)	Center T_{OPR}	0	50	°C	(2)
Shock (non - operating)	S_{nop}	-	50	G	(3)
Vibration (non - operating)	V_{nop}	-	1.5	G	(4)

Note (1) $T_a = 25 \pm 2 \text{ }^\circ\text{C}$

(2) Temperature and relative humidity range are shown in the figure below.

a. 90 % RH Max. ($T_a \leq 39 \text{ }^\circ\text{C}$)

b. Relative Humidity is 90% or less. ($T_a > 39 \text{ }^\circ\text{C}$)

c. No condensation

(3) 11ms, sine wave, one time for $\pm X, \pm Y, \pm Z$ axis

(4) 10-300 Hz, Sweep rate 10min, 30min for X,Y,Z axis

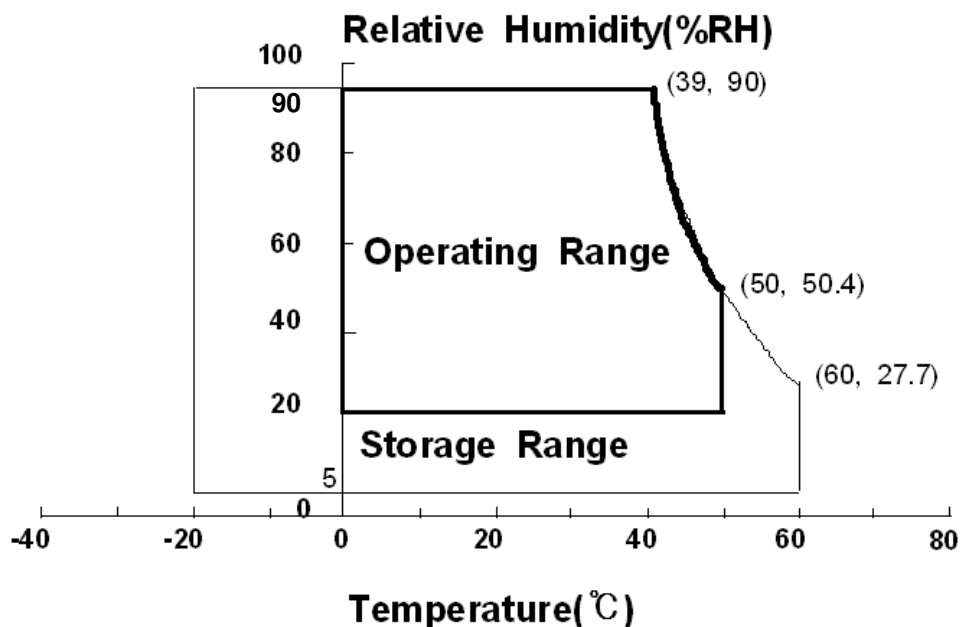


Fig. Temperature and Relative humidity range

MODEL

LTA320AB02

Doc. No

06-000-G-071220

Page

5/26

2. Optical Characteristics

The optical characteristics should be measured in a dark room or equivalent.

Measuring equipment : TOPCON RD-80S, TOPCON SR-3, ELDIM EZ-Contrast

(Ta = 25 ± 2°C, VDD=12V, fv= 60Hz, f_{DCLK}=78MHz)

Item		Symbol	Condition	Min.	Typ.	Max.	Unit	Note
Contrast Ratio (Center of screen)		C/R	Normal $\theta_{L,R}=0$ $\theta_{U,D}=0$	2,000	3,000	-		(1) SR-3
Response Time	G-to-G (Avg)	Tg		-	8	16		(3) RD-80S
Luminance of White (Center of screen)		Y _L		400	500		cd/m ²	(4) SR-3
Color Chromaticity (CIE 1931)	Red	Rx	Viewing Angle	TYP. -0.03	0.644	TYP. +0.03		(5),(6) SR-3
		Ry			0.337			
	Green	Gx			0.290			
		Gy			0.610			
	Blue	Bx			0.149			
		By			0.066			
	White	Wx			0.280			
		Wy			0.290			
Color Gamut		-	-	72	-	%	(5) SR-3	
Color Temperature		-	8,000	10,000	12,000	K	(5) SR-3	
Viewing Angle	Hor.	θ_L	C/R≥10	75	89	-	Degree	(6) EZ-Contrast
		θ_R		75	89	-		
	Ver.	θ_U		75	89	-		
		θ_D		75	89	-		
Brightness Uniformity (9 Points)		B _{uni}	-	-	25	%	(2) SR-3	

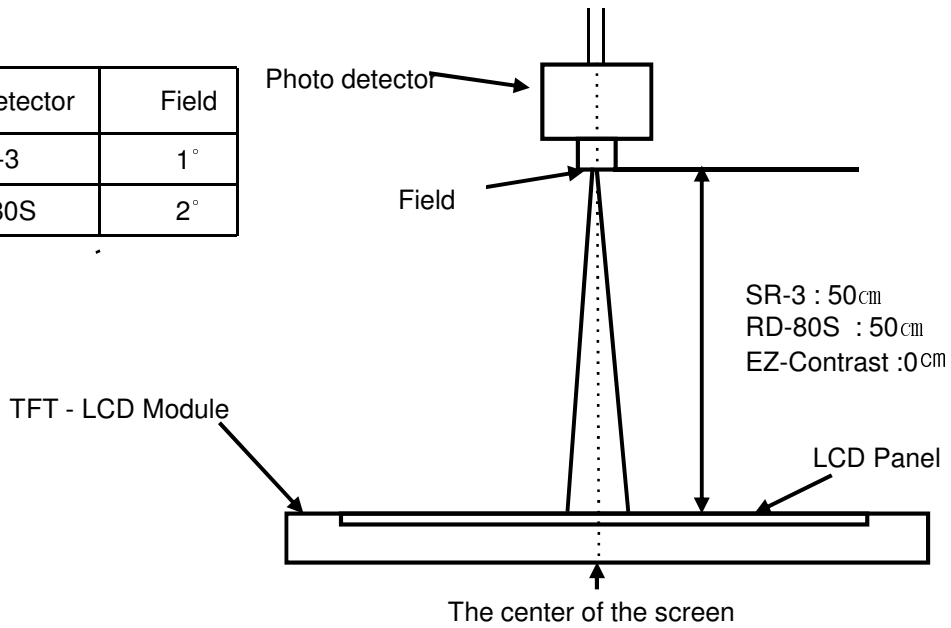
- Test Equipment Setup

The measurement should be executed in a stable, windless and dark room between 40min and 60min after lighting the back light at the given temperature for stabilization of the back light. This should be measured in the center of screen.

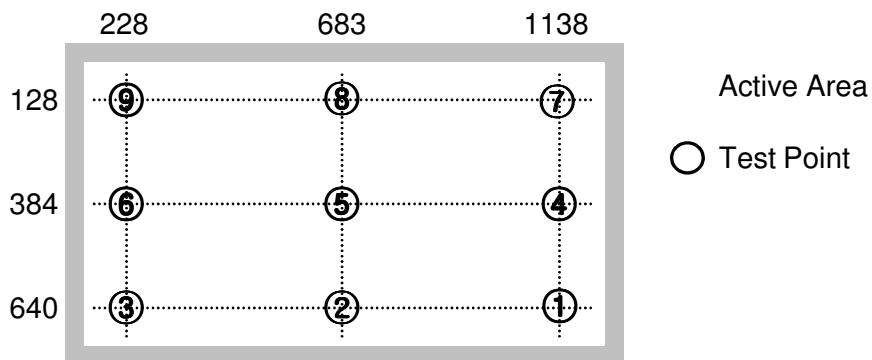
Environment condition : Ta = 25 ± 2 °C

MODEL	LTA320AB02	Doc. No	06-000-G-071220	Page	6/26
--------------	-------------------	----------------	------------------------	-------------	-------------

Photo detector	Field
SR-3	1°
RD-80S	2°



- Definition of test point



Note (1) Definition of Contrast Ratio (C/R)

: Ratio of gray max (Gmax) & gray min (Gmin) at the center point ⑤ of the panel

$$C/R = \frac{G \max}{G \min}$$

Gmax : Luminance with all pixels white

Gmin : Luminance with all pixels black

MODEL

LTA320AB02

Doc. No

06-000-G-071220

Page

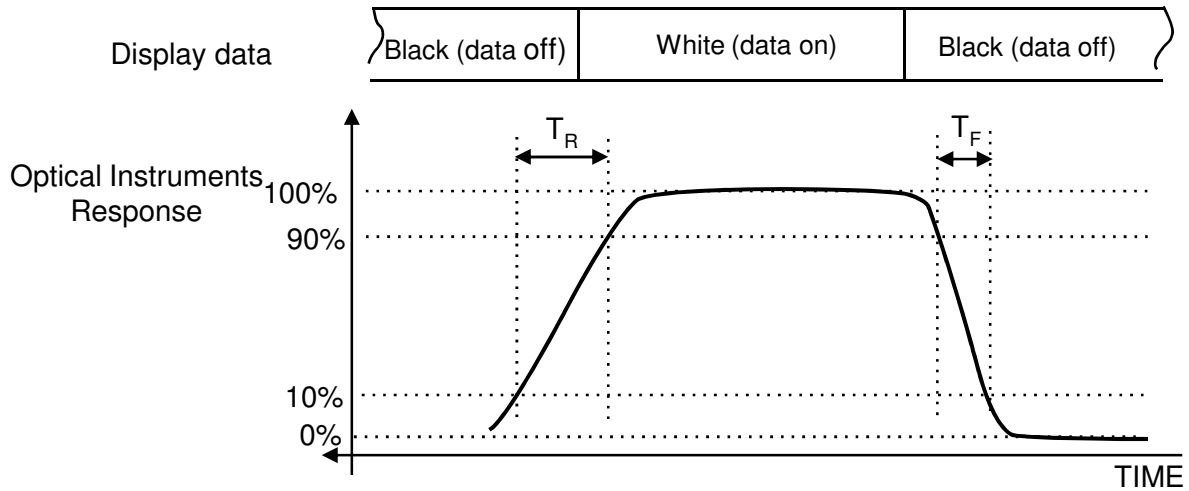
7/26

Note (2) Definition of 9 points brightness uniformity (Test pattern : Full White)

$$Buni = 100 * \frac{(B_{max} - B_{min})}{B_{max}}$$

Bmax : Maximum brightness
 Bmin : Minimum brightness

Note (3) Definition of Response time : Sum of Tr, Tf



※ G-to-G : Average response time between Gray to gray (scale)

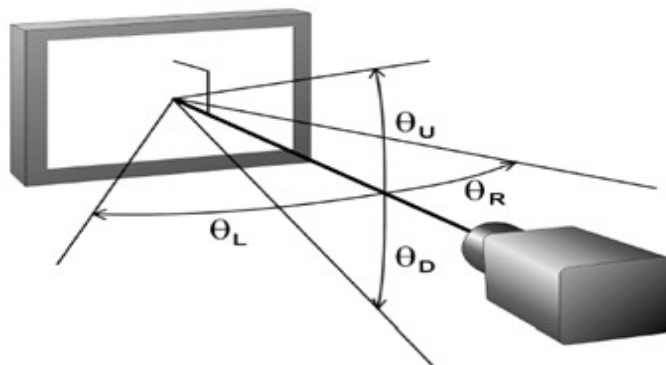
Note (4) Definition of Luminance of White : Luminance of white at center point ⑤

Note (5) Definition of Color Chromaticity (CIE 1931)

Color coordinate of Red, Green, Blue & White at center point ⑤

Note (6) Definition of Viewing Angle

: Viewing angle range (C/R ≥ 10)



3. Electrical Characteristics

3.1 TFT LCD Module

The connector for display data & timing signal should be connected.

$T_a = 25^\circ\text{C} \pm 2^\circ\text{C}$

Item	Symbol	Min.	Typ.	Max.	Unit	Note
Voltage of Power Supply	V_{DD}	10.8	12.0	13.2	V	(1)
Current of Power Supply	(a) Black	-	600	800	mA	(2),(3)
	(b) White	-	750	950	mA	
	(c) V-Stripe	-	720	920	mA	
Vsync Frequency	f_V	48	60	66	Hz	
Hsync Frequency	f_H	46	48	52	kHz	
Main Frequency	f_{DCLK}	67	75	82	MHz	
Rush Current	I_{RUSH}	-	-	4	A	(4)

Note (1) The ripple voltage should be controlled under 10% of V_{DD} .

(2) $f_V=60\text{Hz}$, $f_{DCLK} = 78\text{MHz}$, $V_{DD} = 12.0\text{V}$, DC Current.

(3) Power dissipation check pattern (LCD Module only)

a) Black Pattern



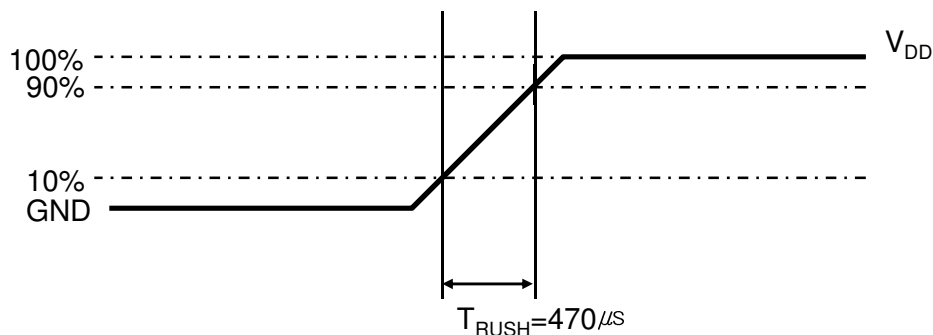
b) White Pattern



c) V-Stripe



(4) Measurement Conditions

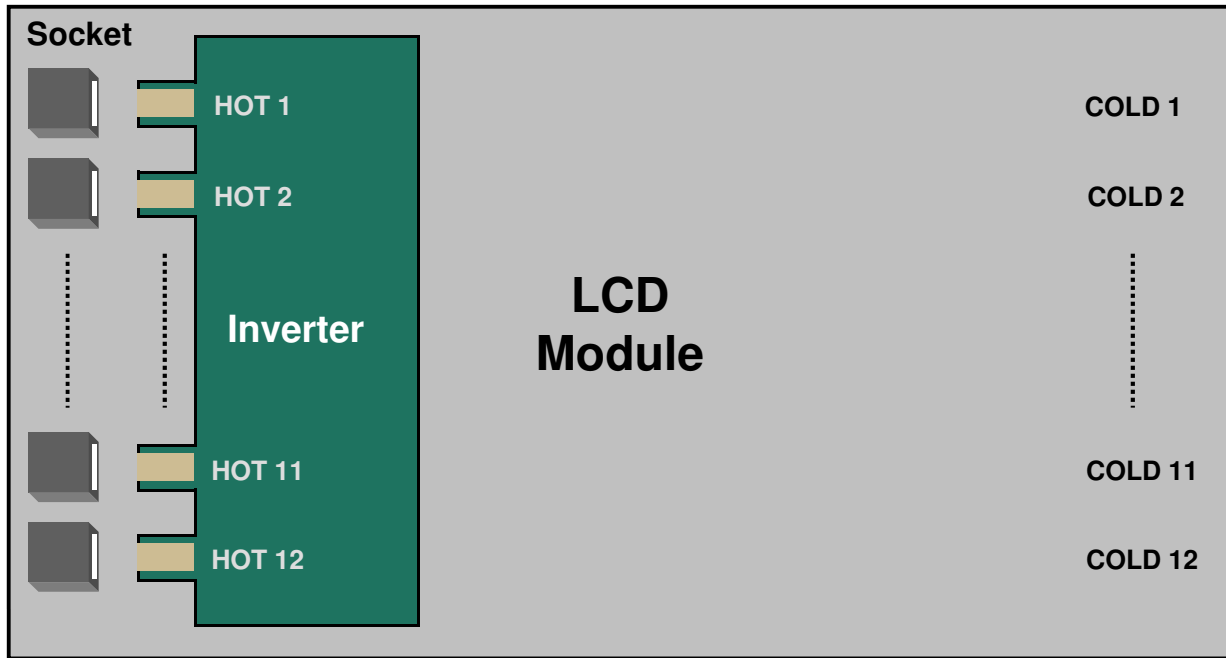


Rush Current I_{RUSH} can be measured when T_{RUSH} is $470 \mu\text{s}$.

3.2 Back Light Unit

The back light unit contains 12 direct-lighting type CCFLs (Cold Cathode Fluorescent Lamp). The characteristics of lamps are shown in the following tables.

$T_a = 25 \pm 2^\circ\text{C}$



Item	Symbol	Min.	Typ.	Max.	Unit	Note
Operating Life Time	Hr	50,000	-	-	Hour	(1)

Note (1) It is defined as the time to take until the brightness reduces to 50% of its original value.

[Operating condition : $T_a = 25 \pm 2^\circ\text{C}$, $I_L = 8.0 \text{ A}$, For single lamp only.]

MODEL	LTA320AB02	Doc. No	06-000-G-071220	Page	10/26
--------------	-------------------	----------------	------------------------	-------------	--------------

3.3 Inverter Input Condition & Specification

Items	Symbol	Conditions	Specifications			Unit	Note
			Min.	Typ.	Max.		
Input Voltage	V _{in}	-	22	24	26	V	T _a =25±2 °C
Input Current	I _{in}	V _{in} =24.0V V _{dim} =3.3V	-	4.1	-	Adc	(1)
Frequency	F _{LAMP}	V _{in} =24.0 V	62	63.5	65	kHz	After 2 Hours Warm-Up @V _{in} =24V
Lamp current	I _o	V _{in} =24.0V V _{dim} =3.3V	7.5	8.0	8.5	mArms	
Backlight On/Off	ON	V _{in} =24.0 V	2.4	-	5.25	V	-
	OFF	V _{in} =24.0 V	0	-	0.8		
Dimming Control	V _{DIM}	Max Lum	3.3	-	-	V	-
		Min. Lum	-	-	0		

Note) Power Consumption is measured when 500[cd/m²] of luminance which is the typical luminance.

Lamp Current is measured at the point before Lamp.

(1) Max Value of the Power Consumption is measured after 60 min warm-up.

* Initial turn-on time : From 0sec to 60min after turn-on

MODEL

LTA320AB02

Doc. No

06-000-G-071220

Page

11/26

4. Input Terminal Pin Assignment

4.1. Input Signal & Power

Connector : FI-E30S (JAE)

PIN No.	Description	PIN No.	Description
1	No Connection (Note1)	16	GND
2	No Connection (Note1)	17	RxIN3-
3	No Connection (Note1)	18	RxIN3+
4	GND	19	GND
5	RxIN0-	20	GND
6	RxIN0+	21	LVDS OPTION (Note 2)
7	GND	22	No Connection (Note1)
8	RxIN1-	23	GND
9	RxIN1+	24	GND
10	GND	25	GND
11	RxIN2-	26	Vin
12	RxIN2+	27	Vin
13	GND	28	Vin
14	RxCLK-	29	Vin
15	RxCLK+	30	Vin

Note1) No Connection: **This PINS are only used for SAMSUNG internal using. DO NOT CONNECT**

Note2) LVDS OPTION : If this PIN is HIGH (3.3 V) → Normal LVDS format
 LOW (GND) → JEIDA LVDS format

SEQUENCE : On = $V_{DD}(T1) \geq \text{LVDS Option} \geq \text{Interface Signal}(T2)$
 OFF = $\text{Interface Signal}(T3) \geq \text{LVDS Option} \geq V_{DD}$

MODEL

LTA320AB02

Doc. No

06-000-G-071220

Page

12/26

Note(1) Pin number starts from Left side

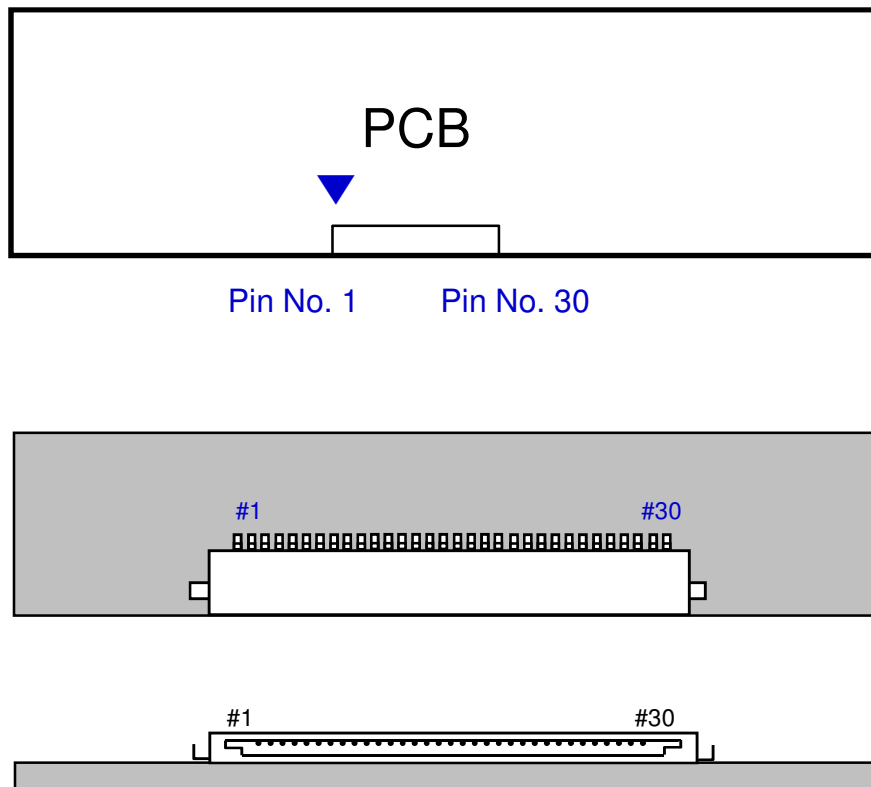


Fig. Connector diagram

- a. Power GND pins should be connected to the LCD's metal chassis.
- b. All power input pins should be connected together.
- c. All NC pin should be separated from other signal or power.

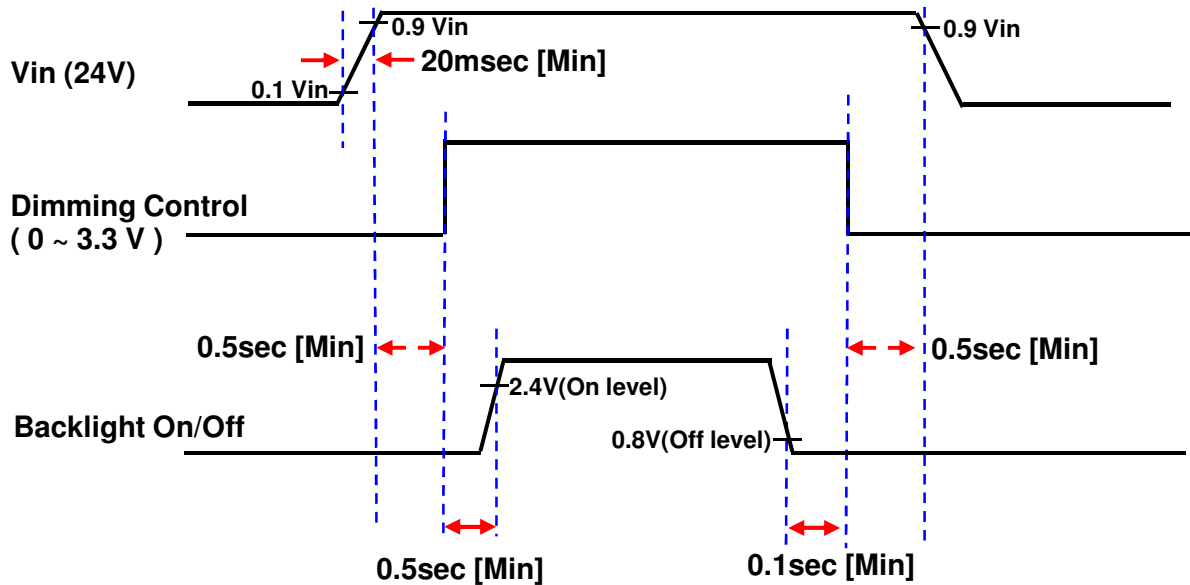
MODEL	LTA320AB02	Doc. No	06-000-G-071220	Page	13/26
-------	------------	---------	-----------------	------	-------

4.2. Inverter Input Pin Configuration

Connector : S14B-PHA-SM-TB(LF) (JST)

Pin No.	Pin Configuration(FUNCTION)
1	24 V
2	24 V
3	24 V
4	24 V
5	24 V
6	GND
7	GND
8	GND
9	GND
10	GND
11	No Connection (DO NOT CONNECT)
12	Backlight On /Off [ON:2.4 - 5.25 V, OFF: 0 - 0.8 V]
13	Dimming Control [0V:Min, 3.3V:Max]
14	No Connection (DO NOT CONNECT)

4.3. Inverter Input Power Sequence



MODEL	LTA320AB02	Doc. No	06-000-G-071220	Page	14/26
-------	------------	---------	-----------------	------	-------

4.4 LVDS Interface

- LVDS Receiver : Tcon (merged)
- Data Format (JEIDA & VESA)

	LVDS pin	JEIDA -DATA	VESA -DATA
TxOUT/RxIN0	TxIN/RxOUT0	R2	R0
	TxIN/RxOUT1	R3	R1
	TxIN/RxOUT2	R4	R2
	TxIN/RxOUT3	R5	R3
	TxIN/RxOUT4	R6	R4
	TxIN/RxOUT6	R7	R5
	TxIN/RxOUT7	G2	G0
TxOUT/RxIN1	TxIN/RxOUT8	G3	G1
	TxIN/RxOUT9	G4	G2
	TxIN/RxOUT12	G5	G3
	TxIN/RxOUT13	G6	G4
	TxIN/RxOUT14	G7	G5
	TxIN/RxOUT15	B2	B0
	TxIN/RxOUT18	B3	B1
TxOUT/RxIN2	TxIN/RxOUT19	B4	B2
	TxIN/RxOUT20	B5	B3
	TxIN/RxOUT21	B6	B4
	TxIN/RxOUT22	B7	B5
	TxIN/RxOUT24	HSYNC	HSYNC
	TxIN/RxOUT25	VSYNC	VSYNC
	TxIN/RxOUT26	DEN	DEN
TxOUT/RxIN3	TxIN/RxOUT27	R0	R6
	TxIN/RxOUT5	R1	R7
	TxIN/RxOUT10	G0	G6
	TxIN/RxOUT11	G1	G7
	TxIN/RxOUT16	B0	B6
	TxIN/RxOUT17	B1	B7
	TxIN/RxOUT23	RESERVED	RESERVED

MODEL

LTA320AB02

Doc. No

06-000-G-071220

Page

15/26

4.5 Input Signals, Basic Display Colors and Gray Scale of Each Color

COLOR	DISPLAY (8bit)	DATA SIGNAL																								GRAY SCALE LEVEL
		RED							GREEN							BLUE										
		R0	R1	R2	R3	R4	R5	R6	R7	G0	G1	G2	G3	G4	G5	G6	G7	B0	B1	B2	B3	B4	B5	B6	B7	
BASIC COLOR	BLACK	0	0	0	0	0	0	0	0	0	0	0	0	0	0	0	0	0	0	0	0	0	0	0	0	-
	BLUE	0	0	0	0	0	0	0	0	0	0	0	0	0	0	0	0	1	1	1	1	1	1	1	1	-
	GREEN	0	0	0	0	0	0	0	0	1	1	1	1	1	1	1	1	0	0	0	0	0	0	0	0	-
	CYAN	0	0	0	0	0	0	0	0	1	1	1	1	1	1	1	1	1	1	1	1	1	1	1	1	-
	RED	1	1	1	1	1	1	1	1	0	0	0	0	0	0	0	0	0	0	0	0	0	0	0	0	-
	MAGENTA	1	1	1	1	1	1	1	1	0	0	0	0	0	0	0	0	1	1	1	1	1	1	1	1	-
	YELLOW	1	1	1	1	1	1	1	1	1	1	1	1	1	1	1	1	0	0	0	0	0	0	0	0	-
	WHITE	1	1	1	1	1	1	1	1	1	1	1	1	1	1	1	1	1	1	1	1	1	1	1	1	-
GRAY SCALE OF RED	BLACK	0	0	0	0	0	0	0	0	0	0	0	0	0	0	0	0	0	0	0	0	0	0	0	R0	
	DARK ↑	1	0	0	0	0	0	0	0	0	0	0	0	0	0	0	0	0	0	0	0	0	0	0	R1	
		0	1	0	0	0	0	0	0	0	0	0	0	0	0	0	0	0	0	0	0	0	0	0	R2	
		:	:	:	:	:	:	:	:	:	:	:	:	:	:	:	:	:	:	:	:	:	:	:	R3~	
		:	:	:	:	:	:	:	:	:	:	:	:	:	:	:	:	:	:	:	:	:	:	:	R252	
	↓ LIGHT	1	0	1	1	1	1	1	1	0	0	0	0	0	0	0	0	0	0	0	0	0	0	0	R253	
		0	1	1	1	1	1	1	1	0	0	0	0	0	0	0	0	0	0	0	0	0	0	0	R254	
	RED	1	1	1	1	1	1	1	1	0	0	0	0	0	0	0	0	0	0	0	0	0	0	0	R255	
GRAY SCALE OF GREEN	BLACK	0	0	0	0	0	0	0	0	0	0	0	0	0	0	0	0	0	0	0	0	0	0	0	G0	
	DARK ↑	0	0	0	0	0	0	0	0	1	0	0	0	0	0	0	0	0	0	0	0	0	0	0	G1	
		0	0	0	0	0	0	0	0	0	1	0	0	0	0	0	0	0	0	0	0	0	0	0	G2	
		:	:	:	:	:	:	:	:	:	:	:	:	:	:	:	:	:	:	:	:	:	:	:	G3~	
		:	:	:	:	:	:	:	:	:	:	:	:	:	:	:	:	:	:	:	:	:	:	:	G252	
	↓ LIGHT	0	0	0	0	0	0	0	0	1	0	1	1	1	1	1	1	0	0	0	0	0	0	0	G253	
		0	0	0	0	0	0	0	0	0	1	1	1	1	1	1	1	0	0	0	0	0	0	0	G254	
	GREEN	0	0	0	0	0	0	0	0	1	1	1	1	1	1	1	1	0	0	0	0	0	0	0	G255	
GRAY SCALE OF BLUE	BLACK	0	0	0	0	0	0	0	0	0	0	0	0	0	0	0	0	0	0	0	0	0	0	0	B0	
	DARK ↑	0	0	0	0	0	0	0	0	0	0	0	0	0	0	0	0	1	0	0	0	0	0	0	B1	
		0	0	0	0	0	0	0	0	0	0	0	0	0	0	0	0	0	1	0	0	0	0	0	B2	
		:	:	:	:	:	:	:	:	:	:	:	:	:	:	:	:	:	:	:	:	:	:	:	B3~	
		:	:	:	:	:	:	:	:	:	:	:	:	:	:	:	:	:	:	:	:	:	:	:	B252	
	↓ LIGHT	0	0	0	0	0	0	0	0	0	0	0	0	0	0	0	0	1	0	1	1	1	1	1	B253	
		0	0	0	0	0	0	0	0	0	0	0	0	0	0	0	0	0	1	1	1	1	1	1	B254	
	BLUE	0	0	0	0	0	0	0	0	0	0	0	0	0	0	0	0	1	1	1	1	1	1	1	B255	

Note) Definition of Gray :

Rn : Red Gray, Gn : Green Gray, Bn : Blue Gray (n = Gray level)

Input Signal : 0 = Low level voltage, 1 = High level voltage

MODEL

LTA320AB02

Doc. No

06-000-G-071220

Page

16/26

5. Interface Timing

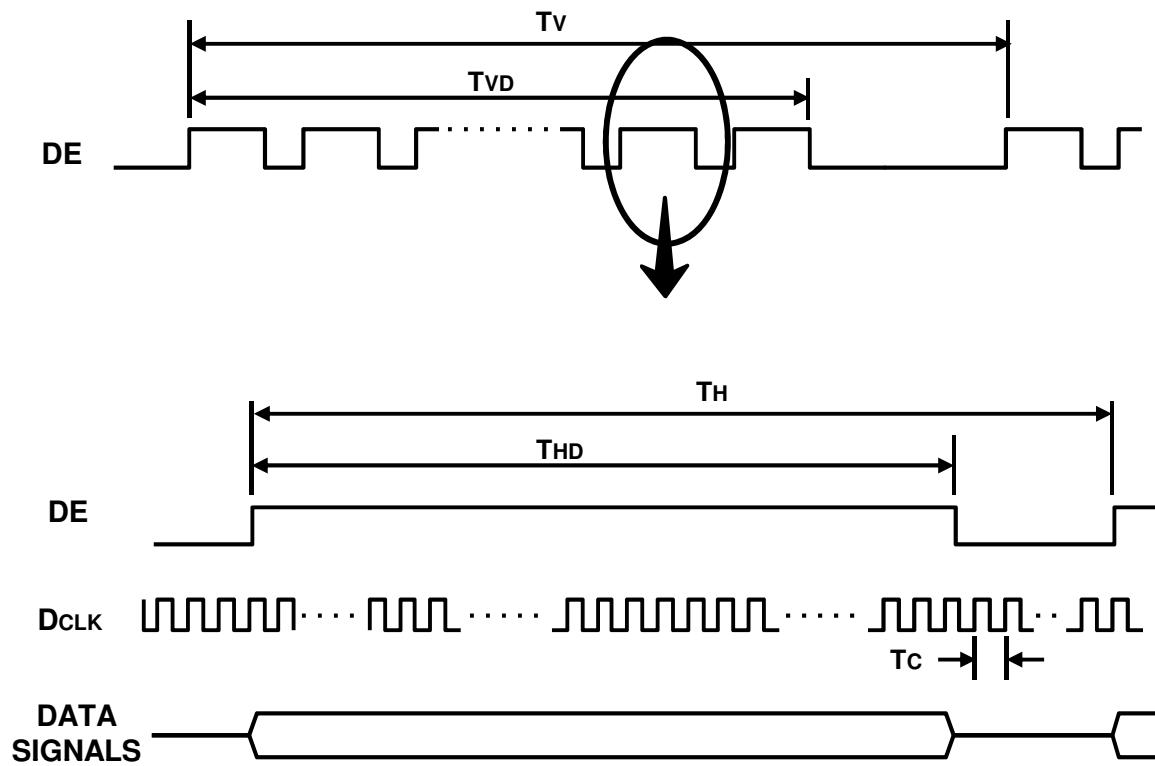
5.1 Timing Parameters (DE only mode)

SIGNAL	ITEM	SYMBOL	MIN.	TYP.	MAX.	Unit	NOTE
Clock	Frequency	$1/T_C$	67	75	82	MHz	-
Hsync		F_H	46	48	52	KHz	-
Vsync		F_V	48	60	66	Hz	-
Vertical Display Term	Active Display Period	T_{VD}	-	768	-	lines	-
	Vertical Total	T_V	773	810	1200	lines	-
Horizontal Display Term	Active Display Period	T_{HD}	-	1366	-	clocks	-
	Horizontal Total	T_H	1460	1648	2000	clocks	-

Note) This product is DE only mode. The input of Hsync & Vsync signal does not have an effect on normal operation.

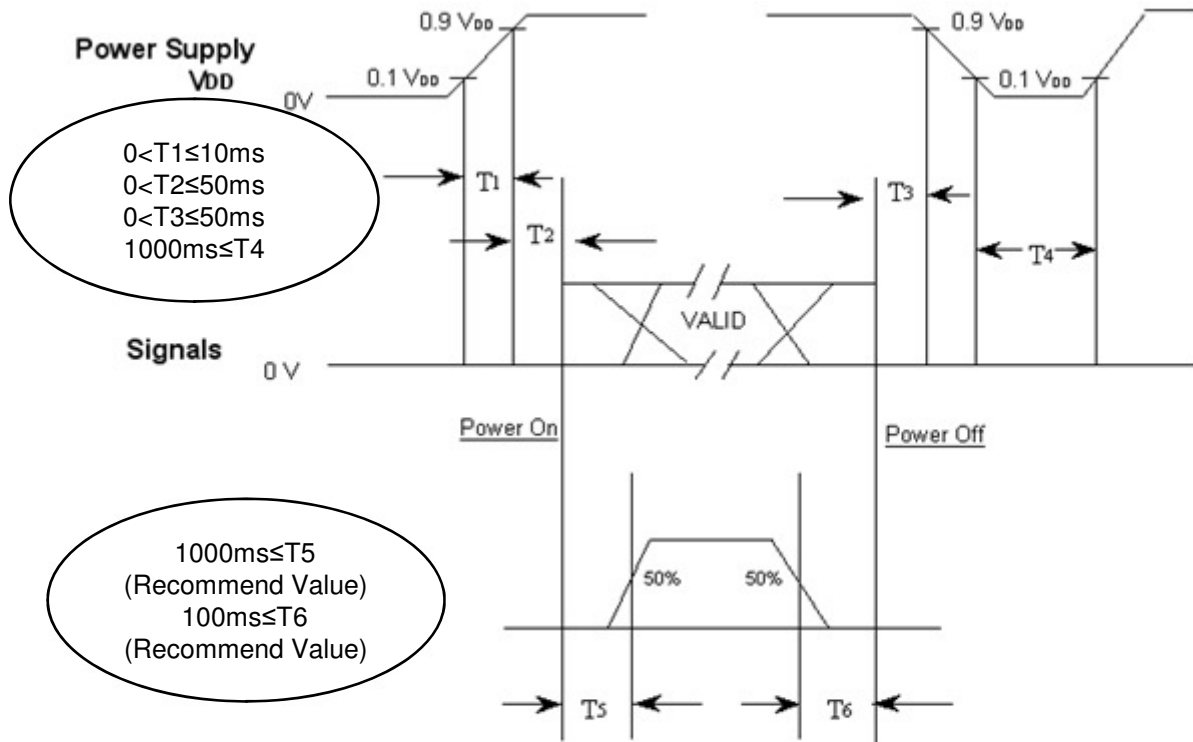
- (1) Test Point : TTL control signal and CLK at LVDS Tx input terminal in system
- (2) Internal $V_{DD} = 3.3V$

5.2 Timing diagrams of interface signal (DE only mode)



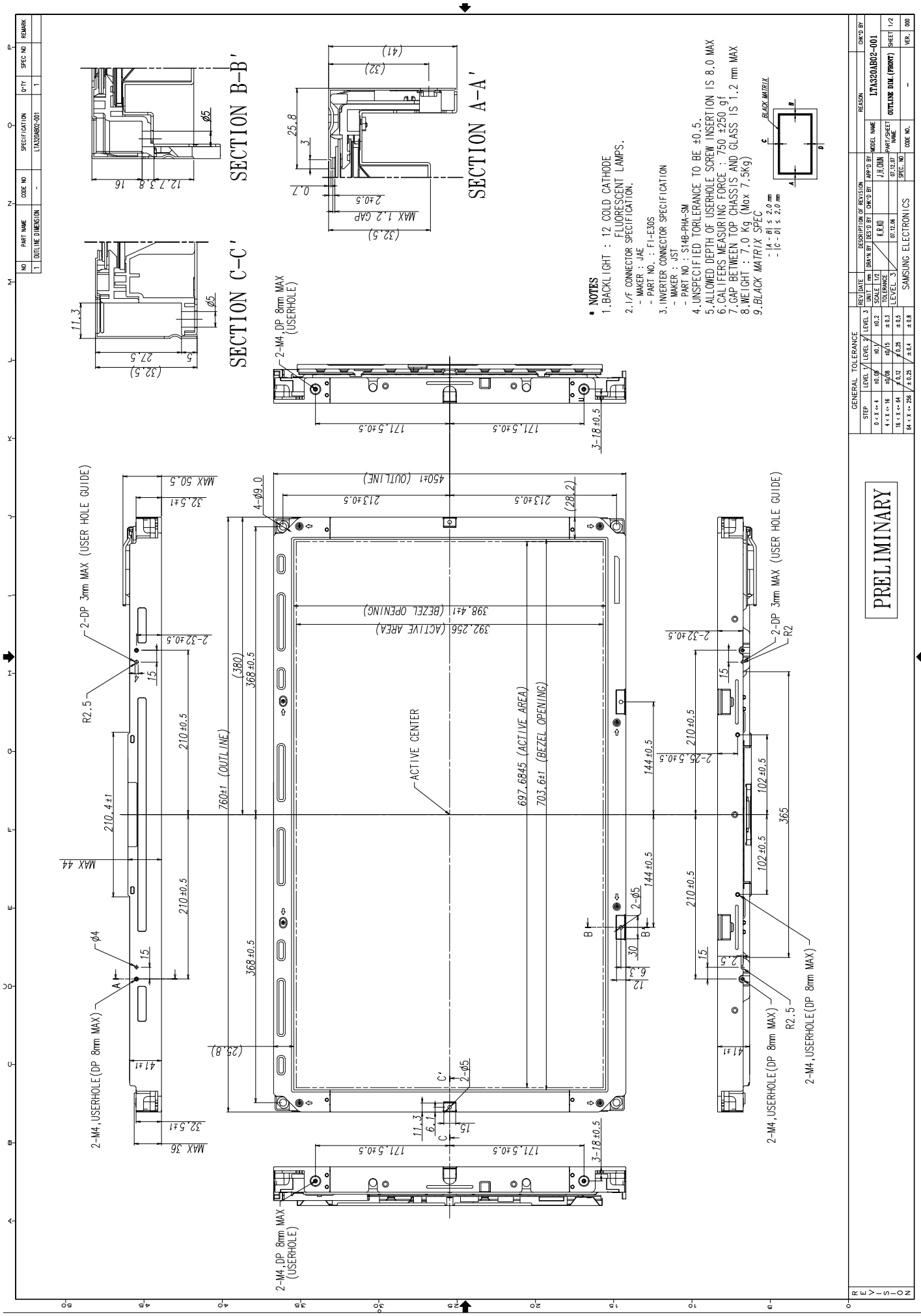
5.3 Power ON/OFF Sequence

To prevent a latch-up or DC operation of the LCD Module, the power on/off sequence should be as the diagram below.

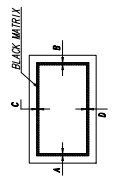


- $T1$: V_{DD} rising time from 10% to 90%
- $T2$: The time from V_{DD} to valid data at power ON.
- $T3$: The time from valid data off to V_{DD} off at power Off.
- $T4$: V_{DD} off time for Windows restart
- $T5$: The time from valid data to B/L enable at power ON.
- $T6$: The time from valid data off to B/L disable at power Off.

- The supply voltage of the external system for the Module input should be the same as the definition of V_{DD} .
- Apply the lamp voltage within the LCD operation range. When the back light turns on before the LCD operation or the LCD turns off before the back light turns off, the display may momentarily show abnormal screen.
- In case of $V_{DD} = \text{off level}$, please keep the level of input signals low or keep a high impedance.
- $T4$ should be measured after the Module has been fully discharged between power off and on period.
- Interface signal should not be kept at high impedance when the power is on.



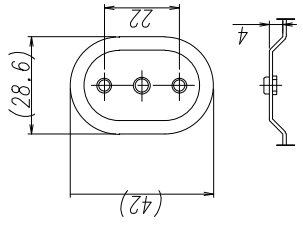
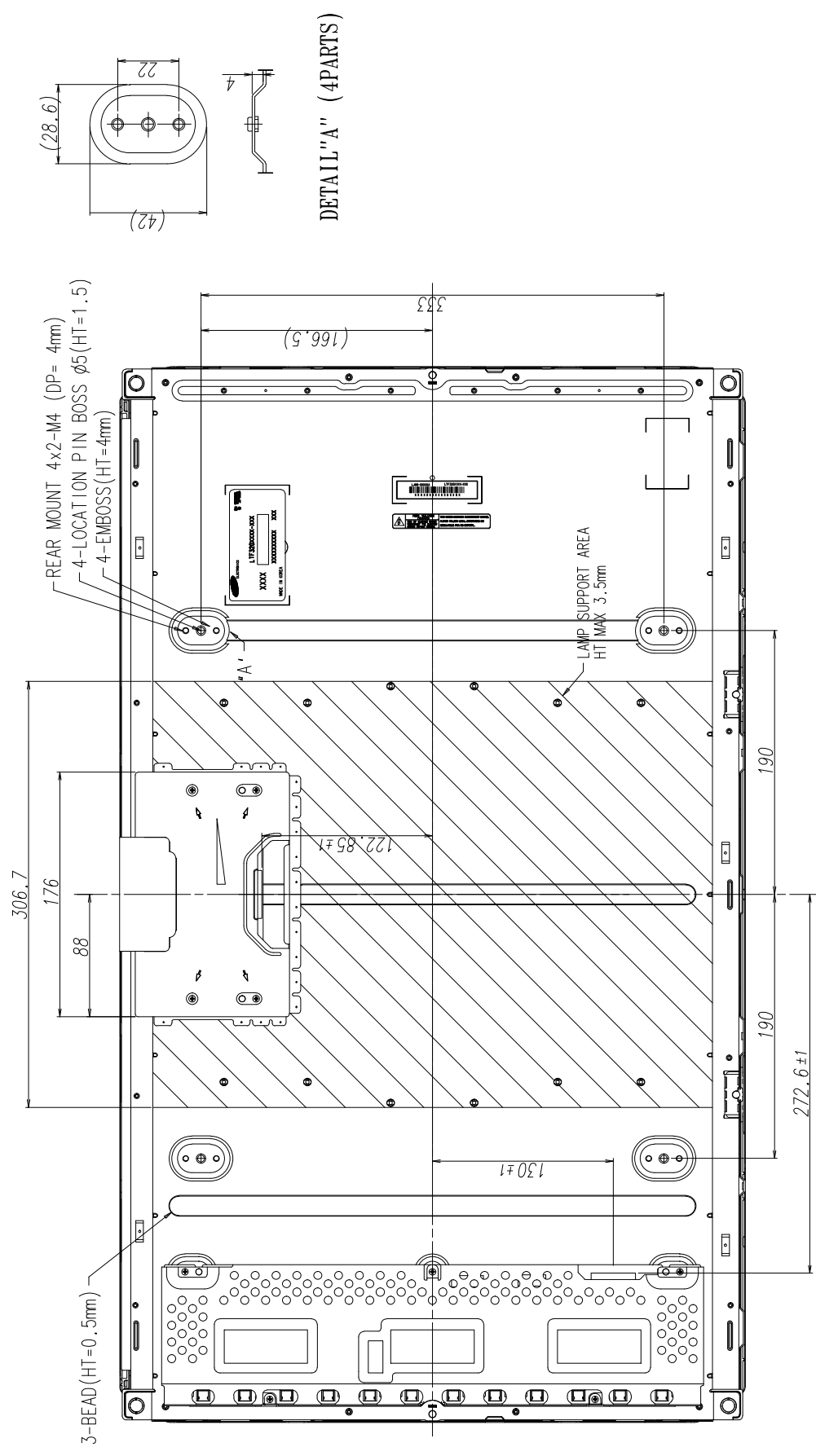
- * NOTES**
1. BACKLIGHT : 12 COLD CATHODE FLUORESCENT LAMPS.
 2. I/F CONNECTOR SPECIFICATION.
- MAKER : JAE
- PART NO. : FI-E305
 3. INVERTER CONNECTOR SPECIFICATION
- MAKER : JST
- PART NO. : S14B-PHA-SM
 4. UNSPECIFIED TOLERANCE TO BE ±0.5.
 5. ALLOWED DEPTH OF USERHOLE SCREW INSERTION IS 8.0 MAX
 6. CAL PERS MEASURING FORCE : 750 ±250 gf
 7. GAP BETWEEN TOP CHASSIS AND GLASS IS 1.2 mm MAX
 8. WEIGHT : 7.0 Kg. (Max 7.5Kg)
 9. BLACK MATRIX SPEC
- |A - B| ≤ 2.0 mm
- |C - D| ≤ 2.0 mm



STEP	GENERAL TOLERANCE	REVISION DATE	REVISION BY	REVISION REASON	CHK'D BY
0.1 x ± 4	LEVEL 1				
0.1 x ± 4	LEVEL 2				
0.1 x ± 4	LEVEL 3				
0.1 x ± 4	LEVEL 4				
0.1 x ± 4	LEVEL 5				
0.1 x ± 4	LEVEL 6				
0.1 x ± 4	LEVEL 7				
0.1 x ± 4	LEVEL 8				
0.1 x ± 4	LEVEL 9				
0.1 x ± 4	LEVEL 10				
0.1 x ± 4	LEVEL 11				
0.1 x ± 4	LEVEL 12				
0.1 x ± 4	LEVEL 13				
0.1 x ± 4	LEVEL 14				
0.1 x ± 4	LEVEL 15				
0.1 x ± 4	LEVEL 16				
0.1 x ± 4	LEVEL 17				
0.1 x ± 4	LEVEL 18				
0.1 x ± 4	LEVEL 19				
0.1 x ± 4	LEVEL 20				
0.1 x ± 4	LEVEL 21				
0.1 x ± 4	LEVEL 22				
0.1 x ± 4	LEVEL 23				
0.1 x ± 4	LEVEL 24				
0.1 x ± 4	LEVEL 25				
0.1 x ± 4	LEVEL 26				
0.1 x ± 4	LEVEL 27				
0.1 x ± 4	LEVEL 28				
0.1 x ± 4	LEVEL 29				
0.1 x ± 4	LEVEL 30				
0.1 x ± 4	LEVEL 31				
0.1 x ± 4	LEVEL 32				
0.1 x ± 4	LEVEL 33				
0.1 x ± 4	LEVEL 34				
0.1 x ± 4	LEVEL 35				
0.1 x ± 4	LEVEL 36				
0.1 x ± 4	LEVEL 37				
0.1 x ± 4	LEVEL 38				
0.1 x ± 4	LEVEL 39				
0.1 x ± 4	LEVEL 40				
0.1 x ± 4	LEVEL 41				
0.1 x ± 4	LEVEL 42				
0.1 x ± 4	LEVEL 43				
0.1 x ± 4	LEVEL 44				
0.1 x ± 4	LEVEL 45				
0.1 x ± 4	LEVEL 46				
0.1 x ± 4	LEVEL 47				
0.1 x ± 4	LEVEL 48				
0.1 x ± 4	LEVEL 49				
0.1 x ± 4	LEVEL 50				
0.1 x ± 4	LEVEL 51				
0.1 x ± 4	LEVEL 52				
0.1 x ± 4	LEVEL 53				
0.1 x ± 4	LEVEL 54				
0.1 x ± 4	LEVEL 55				
0.1 x ± 4	LEVEL 56				
0.1 x ± 4	LEVEL 57				
0.1 x ± 4	LEVEL 58				
0.1 x ± 4	LEVEL 59				
0.1 x ± 4	LEVEL 60				
0.1 x ± 4	LEVEL 61				
0.1 x ± 4	LEVEL 62				
0.1 x ± 4	LEVEL 63				
0.1 x ± 4	LEVEL 64				
0.1 x ± 4	LEVEL 65				
0.1 x ± 4	LEVEL 66				
0.1 x ± 4	LEVEL 67				
0.1 x ± 4	LEVEL 68				
0.1 x ± 4	LEVEL 69				
0.1 x ± 4	LEVEL 70				
0.1 x ± 4	LEVEL 71				
0.1 x ± 4	LEVEL 72				
0.1 x ± 4	LEVEL 73				
0.1 x ± 4	LEVEL 74				
0.1 x ± 4	LEVEL 75				
0.1 x ± 4	LEVEL 76				
0.1 x ± 4	LEVEL 77				
0.1 x ± 4	LEVEL 78				
0.1 x ± 4	LEVEL 79				
0.1 x ± 4	LEVEL 80				
0.1 x ± 4	LEVEL 81				
0.1 x ± 4	LEVEL 82				
0.1 x ± 4	LEVEL 83				
0.1 x ± 4	LEVEL 84				
0.1 x ± 4	LEVEL 85				
0.1 x ± 4	LEVEL 86				
0.1 x ± 4	LEVEL 87				
0.1 x ± 4	LEVEL 88				
0.1 x ± 4	LEVEL 89				
0.1 x ± 4	LEVEL 90				
0.1 x ± 4	LEVEL 91				
0.1 x ± 4	LEVEL 92				
0.1 x ± 4	LEVEL 93				
0.1 x ± 4	LEVEL 94				
0.1 x ± 4	LEVEL 95				
0.1 x ± 4	LEVEL 96				
0.1 x ± 4	LEVEL 97				
0.1 x ± 4	LEVEL 98				
0.1 x ± 4	LEVEL 99				
0.1 x ± 4	LEVEL 100				

PRELIMINARY

NO	PART NAME	CODE NO	SPECIFICATION	Q'TY	SPEC NO	REMARK
	OUTLINE DIMENSION	-	LT1A320ABD2-001	1		



DETAIL "A" (4PARTS)

<p style="text-align: center; font-size: 2em; border: 1px solid black; padding: 5px;">PRELIMINARY</p>		GENERAL TOLERANCE STEP LEVEL 1 LEVEL 2 LEVEL 3 0 < X ≤ 4 ±0.05 ±0.1 ±0.2 4 < X ≤ 16 ±0.08 ±0.15 ±0.3 16 < X ≤ 64 ±0.12 ±0.25 ±0.5 64 < X ≤ 256 ±0.25 ±0.4 ±0.8		REV DATE UNIT mm SCALE 1/2 TOLERANCE	DESCRIPTION OF REVISION DRW'N BY K.R.KO DES'G BY J.H. OHN CHK'D BY APP'D BY DATE 07.12.07	REASON LTA320ABD2-001 OUTLINE DIM. (RBR)	CHG'D BY MODEL NAME PART / SHEET NAME SPEC. NO CODE NO.	SHEET 2/2 VER. 000
		SAMSUNG ELECTRONICS						

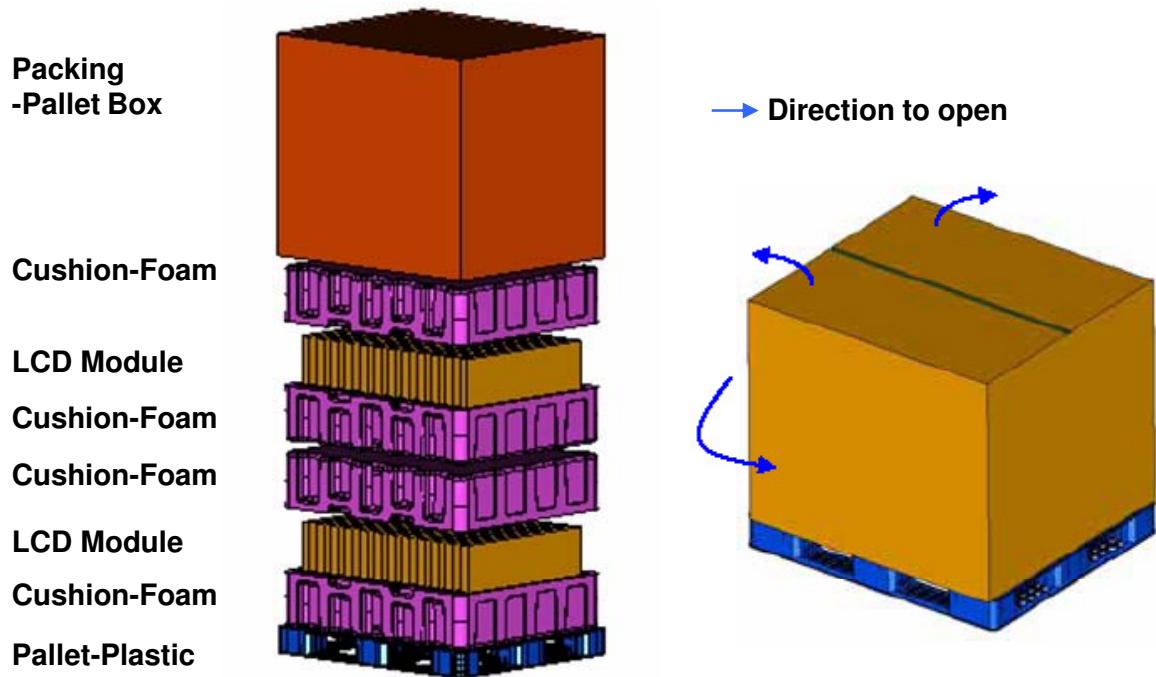
7. PACKING

7.1 CARTON (Internal Package)

(1) Packing Form

Corrugated fiberboard box and corrugated cardboard as shock absorber

(2) Packing Method



7.2 Packing Specification

Item	Specification	Remark
LCD Packing	24ea / (Packing-Pallet Box)	1. 168 Kg / LCD (24ea) 2. 14 Kg / Cushion-pallet (4ea) 3. 8.8 Kg / Packing-Pallet Box (1ea) 4. Cushion-pallet Material : EPS 5. Packing-Pallet Box Material : DW4
Pallet	1Box / Pallet	1. Pallet weight = 8kg 2. 8Kg/Pallet
Packing Direction	Vertical	
Total Pallet Size	H x V x height	1150mm(H) x 985mm(V) x 1161mm(height)
Total Pallet Weight	198.8 kg	Pallet(8kg) + Module(7*24=168) + Cushion(4ea=14kg) + Pallet-BOX(8.8kg)

MODEL

LTA320AB02

Doc. No

06-000-G-071220

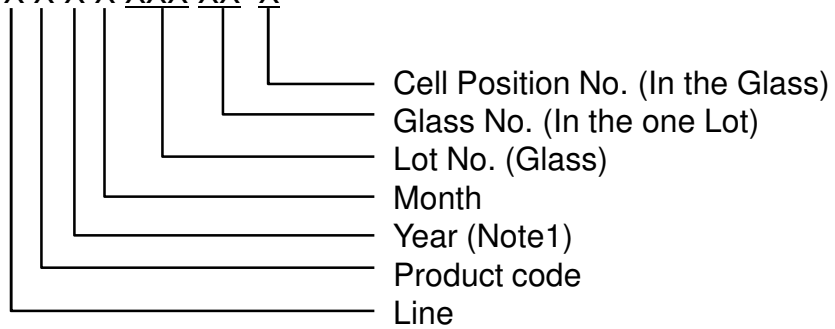
Page

22/26

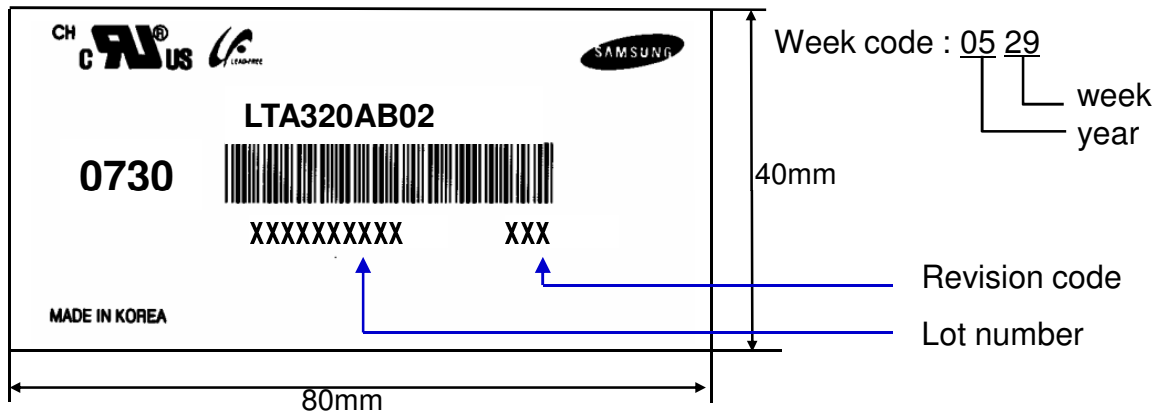
8. MARKING & OTHERS

A nameplate bearing followed by is affixed to a shipped product at the specified location on each product.

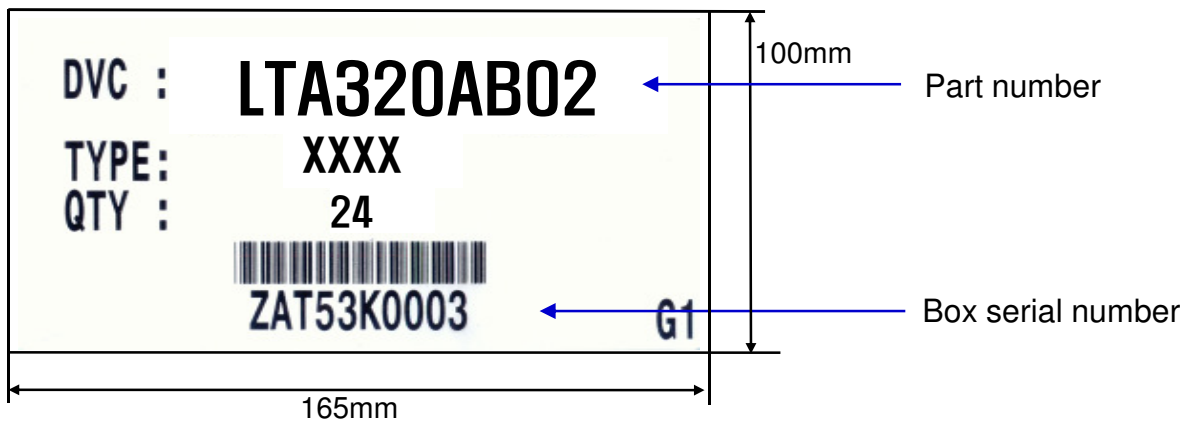
- (1) Parts number : LTA320AB02
- (2) Revision: Three letters
- (3) Lot number : X X X X XXX XX X



(4) Nameplate Indication



(5) Packing box attach



(6) Others

- 1. After service part
 Lamps cannot be replaced because of the narrow bezel structure.

MODEL	LTA320AB02	Doc. No	06-000-G-071220	Page	23/26
-------	------------	---------	-----------------	------	-------

9. General Precautions

9.1 Handling

- (a) When the Module is assembled, it should be attached to the system firmly using all mounting holes. Be careful not to twist and bend the Module.
- (b) Because the inverter use high voltage, it should be disconnected from power before it is assembled or disassembled.
- (c) Refrain from strong mechanical shock and / or any force to the Module. In addition to damage, this may cause improper operation or damage to the Module and CCFL back light.
- (d) Note that polarizers are very fragile and could be damage easily. Do not press or scratch the surface harder than a HB pencil lead.
- (e) Wipe off water droplets or oil immediately. If you leave the droplets for a long time, staining or discoloration may occur.
- (f) If the surface of the polarizer is dirty, clean it using absorbent cotton or soft cloth.
- (g) Desirable cleaners are water, IPA(Isopropyl Alcohol) or Hexane. Do not use Ketone type materials(ex. Acetone), Ethyl alcohol, Toluene, Ethyl acid or Methyl chloride. It might permanent damage to the polarizer due to chemical reaction.
- (h) If the liquid crystal material leaks from the panel, it should be kept away from the eyes or mouth . In case of contact with hands, legs or clothes, it must be washed away with soap thoroughly.
- (i) Protect the module from Electrostatic discharge. Otherwise the ASIC IC or Semiconductor would be damaged.
- (j) Use finger-stalls with soft gloves in order to keep display clean during the incoming inspection and assembly process.
- (k) Do not disassemble the Module.
- (l) Do not disassemble shield case of inverter & LVDS board.
- (m) Do not connect N.C pins. (Samsung internal use only)
- (n) Protection film for polarizer on the Module should be slowly peeled off just before use so that the electrostatic charge can be minimized. Must put on antistatic glove while handle a module
- (o) Pins of I/F connector should not be touched directly with bare hands.

MODEL

LTA320AB02

Doc. No

06-000-G-071220

Page

24/26

9.2 Storage

- (a) Do not leave the Module in high temperature, and high humidity for a long time. It is highly recommended to store the Module with temperature from 0 to 35°C and relative humidity of less than 70%.
- (b) Do not store the TFT-LCD Module in direct sunlight.
- (c) The Module should be stored in a dark place. It is prohibited to apply sunlight or fluorescent light in storing.

9.3 Operation

- (a) Do not connect or disconnect the Module in the "Power On" condition.
- (b) Power supply should always be turned on/off by the "Power on/off sequence"
- (c) Module has high frequency circuits. Sufficient suppression to the electromagnetic interference should be done by system manufacturers. Grounding and shielding methods may be important to minimize the interference.
- (d) The cable between the back light connector and its inverter power supply should be connected directly with a minimized length. A longer cable between the back light and the inverter may cause lower luminance of lamp(CCFL) and may require higher startup voltage(Vs).

9.4 Operation Condition Guide

- (a) The LCD product should be operated under normal conditions.
Normal condition is defined as below;
 - Temperature : $20 \pm 15^{\circ}\text{C}$
 - Humidity : $55 \pm 20\%$
 - Display pattern : continually changing pattern (Not stationary)
- (b) If the product will be used in extreme conditions such as high temperature, humidity, display patterns or operation time etc., It is strongly recommended to contact SEC for Application engineering advice. Otherwise, its reliability and function may not be guaranteed. Extreme conditions are commonly found at Airports, Transit Stations, Banks, Stock market, and Controlling systems.

MODEL

LTA320AB02

Doc. No

06-000-G-071220

Page

25/26

9.5 Others

- (a) Ultra-violet ray filter is necessary for outdoor operation.
- (b) Avoid condensation of water. It may result in improper operation or disconnection of electrode.
- (c) Do not exceed the absolute maximum rating value. (supply voltage variation, input voltage variation, variation in part contents and environmental temperature, and so on)
Otherwise the Module may be damaged.
- (d) If the Module keeps displaying the same pattern for a long period of time, the image may be "sticked" to the screen.
To avoid image sticking, it is recommended to use a screen saver.
- (e) This Module has its circuitry PCB's on the rear side and should be handled carefully in order not to be stressed.
- (f) Please contact SEC in advance when you display the same pattern for a long time.

MODEL	LTA320AB02	Doc. No	06-000-G-071220	Page	26/26
--------------	-------------------	----------------	------------------------	-------------	--------------