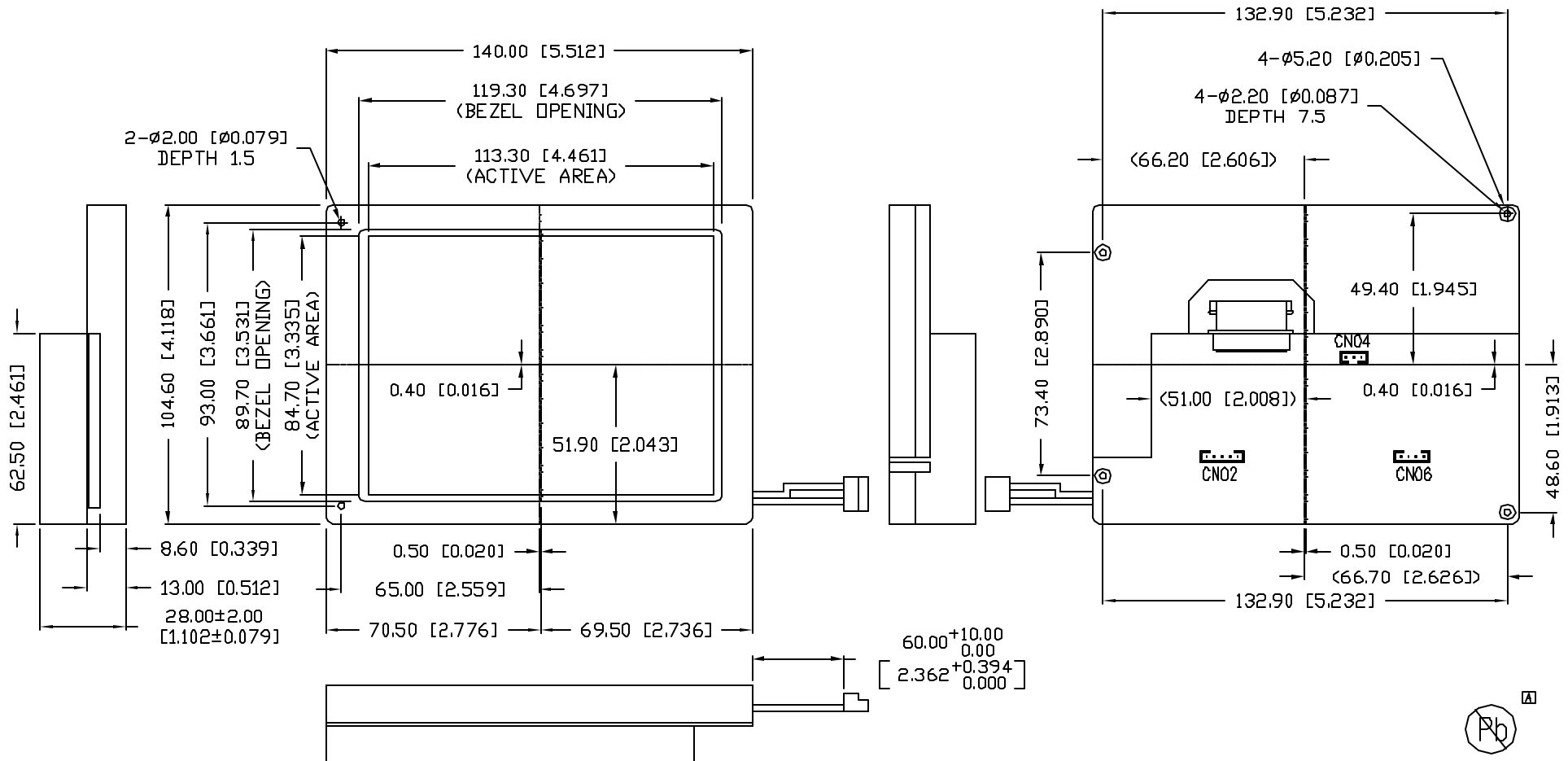


UNCONTROLLED DOCUMENT

PART NUMBER		REV.
LCM-960234GF-56FC		A
REV.	E.C.N. NUMBER AND REVISION COMMENTS	DATE
A	E.C.N. #11148.	4.25.07



\*UNLESS OTHERWISE SPECIFIED TOLERANCES PER DECIMAL PRECISION ARE: X=±1 (±0.038), XX=±0.5 (±0.020), XXX=±0.25 (±0.010), XXXX=±0.127 (±0.005). LEAD SIZE=±0.05 (±0.002), LEAD LENGTH=±0.75 (±0.030). MIN.= +DECIMAL PRECISION MAX.= +0.00 -DECIMAL PRECISION

UNCONTROLLED DOCUMENT

REV.	PART NUMBER	CONFIDENTIAL INFORMATION		290 E. HELEN ROAD	
A	LCM-960234GF-56FC	THE INFORMATION CONTAINED IN THIS DOCUMENT IS THE PROPERTY OF LUMEX INC. EXCEPT AS SPECIFICALLY AUTHORIZED IN WRITING BY LUMEX INC, THE HOLDER OF THIS DOCUMENT SHALL KEEP ALL INFORMATION CONTAINED HEREIN CONFIDENTIAL AND SHALL PROTECT SAME IN WHOLE OR IN PART FROM DISCLOSURE AND DISSEMINATION TO ALL THIRD PARTIES.		PALATINE, IL 60067-6976	
5.6" COLOR TFT MODULE, 960 x 234 RESOLUTION.		RELIABILITY NOTE OUR MANY YEARS OF EXPERIENCE DATA ACCUMULATION INDICATE THAT SOLDER HEAT IS A MAJOR CAUSE OF EARLY AND FUTURE FAILURE. PLEASE PAY ATTENTION TO YOUR SOLDERING PROCESS.		PHONE: +1.847.359.2790	
				US WEB: www.lumex.com	
				TW WEB: www.lumex.com.tw	
		DRAWN BY:	CHECKED BY:	APPROVED BY:	DATE: 12.3.98
		JC			PAGE: 1 OF 1
					SCALE: N/A

PART NUMBER		REV.
LCM-960234GF-56FC		A
REV.	E.C.N. NUMBER AND REVISION COMMENTS	DATE
A	SEE PAGE 1	

TFT MECHANICAL CHARACTERISTICS

DISPLAY SIZE	5.6" COLOR TFT LCD
RESOLUTION	960 (w) x 234 (h)
ACTIVE AREA	113.3 (w) x 84.7 (h)
DOT PITCH	0.118 (w) x 0.362 (h)
WEIGHT	280±5 g.
BACKLIGHT	CCFT (10,000 hr. MIN. AT Tamb=25°C)

TFT OPERATING CONDITIONS

PARAMETERS	SYMBOL	MIN	TYP	MAX	UNITS
OPERATING VOLTAGE	Vop	10	12	30	V.D.C.
OPERATING TEMP	Top	0°	~	50°	°C
STORAGE TEMP	Tstg	-25°	~	80°	°C
OPERATING HUMIDITY	Ho			85%	RH
STORAGE HUMIDITY	Hs			85%	RH
INPUT SIGNAL(NTSC)* SYNC NEGATIVE	Vf		1Vp-p		
	fH		15.75		Khz
	fV		60		Hz
	fc		3.58		MHz
POWER CONSUMPTION	Pc			B	W

\*COMPOSITE VIDEO SIGNAL 1Vp-p/75 OHMS.

OPTICAL CHARACTERISTICS

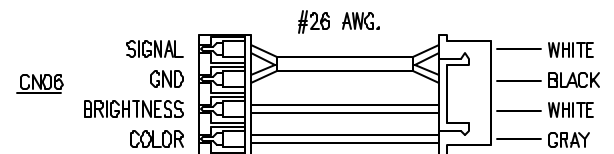
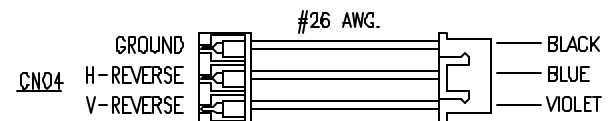
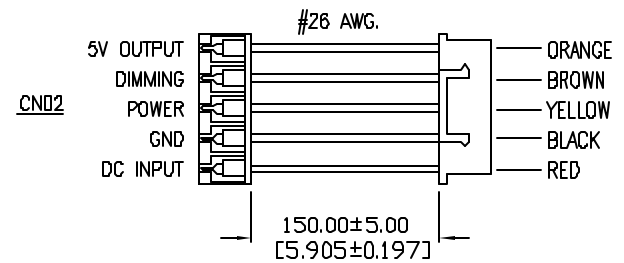
	SYMBOL	MIN	TYP	MAX
VIEWING ANGLE	RIGHT	45°		
	LEFT	45°		
	UP	30°		
	DOWN	10°		

PIN ASSIGNMENT FOR MAIN BOARD

CN02 (5 PINS)					
PARAMETER	COLOR OF WIRE	VOLTAGE		CURRENT	
		MIN.	MAX.	MIN.	MAX.
DC INPUT	RED	10V	30V	-	0.8A
GND	BLACK	-	-	-	-
POWER	YELLOW	0V	5V	0.5mA	-
DIMMING	BROWN	0V	5V	0.5mA	-
5V OUTPUT	ORANGE	4.8V	5.2V	-	3mA

CN04 (3 PINS)			
PARAMETER	COLOR OF WIRE	GROUND	OPEN
V-REVERSE	VIOLET	REVERSE	-
H-REVERSE	BLUE	REVERSE	-
GROUND	BLACK	-	-

CN06 (4 PINS)					
PARAMETER	COLOR OF WIRE	VOLTAGE		CURRENT	
		MIN.	MAX.	MIN.	MAX.
SIGNAL	WHITE	0.8Vp-p	1.2Vp-p	-	-
GND	BLACK	-	-	-	-
BRIGHTNESS	WHITE	0V	5V	3mA	-
COLOR	GRAY	0V	5V	3mA	-



NOTES:

1. CN02, CN04, & CN06 ARE 2mm PITCH CONNECTORS.
2. WIRE LENGTH 150mm.

\*UNLESS OTHERWISE SPECIFIED TOLERANCES PER DECIMAL PRECISION ARE: X=±1 (±0.038), XX=±0.5 (±0.020), XXX=±0.25 (±0.010), XXXX=±0.127 (±0.005). LEAD SIZE=±0.05 (±0.002), LEAD LENGTH=±0.75 (±0.030). MIN= +DECIMAL PRECISION -0.00, MAX= +0.00 -DECIMAL PRECISION

REV.	PART NUMBER
A	LCM-960234GF-56FC
5.6" COLOR TFT MODULE, 960 x 234 RESOLUTION.	

**CONFIDENTIAL INFORMATION**  
 THE INFORMATION CONTAINED IN THIS DOCUMENT IS THE PROPERTY OF LUMEX INC. EXCEPT AS SPECIFICALLY AUTHORIZED IN WRITING BY LUMEX INC., THE HOLDER OF THIS DOCUMENT SHALL KEEP ALL INFORMATION CONTAINED HEREIN CONFIDENTIAL AND SHALL PROTECT SAME IN WHOLE OR IN PART FROM DISCLOSURE AND DISSEMINATION TO ALL THIRD PARTIES.

**RELIABILITY NOTE**  
 OUR MANY YEARS OF EXPERIENCE DATA ACCUMULATION INDICATE THAT SOLDER HEAT IS A MAJOR CAUSE OF EARLY AND FUTURE FAILURE. PLEASE PAY ATTENTION TO YOUR SOLDERING PROCESS.

290 E. HELEN ROAD  
 PALATINE, IL 60067-6976  
 PHONE: +1.847.359.2790  
 US WEB: www.lumex.com  
 TW WEB: www.lumex.com.tw

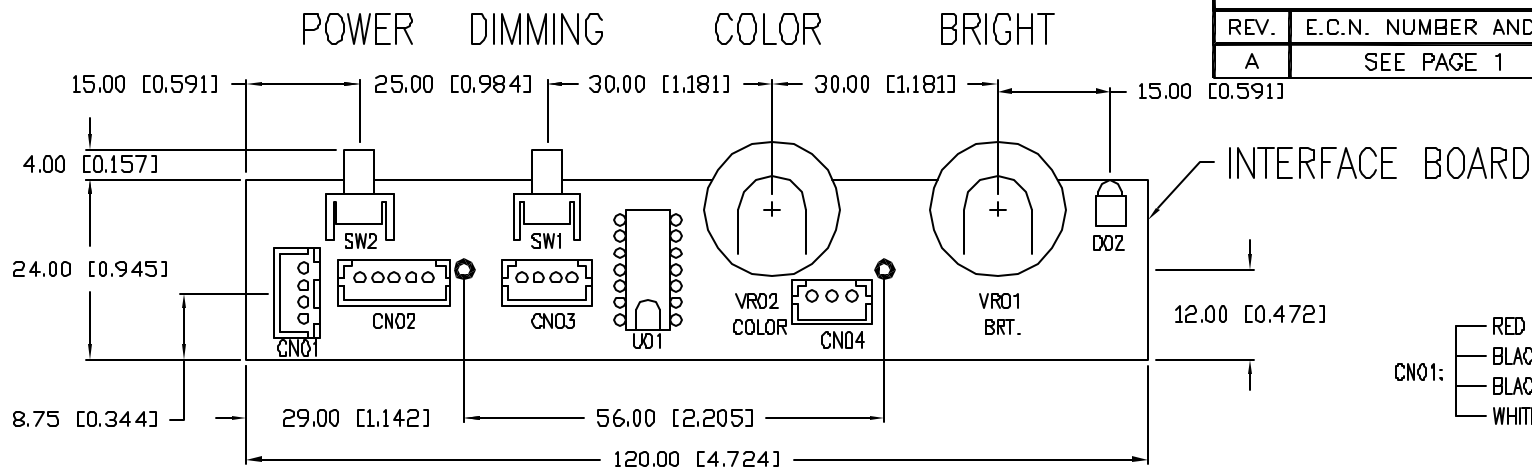
DRAWN BY:	CHECKED BY:	APPROVED BY:	DATE:
JG			12.3.98
			PAGE: 1 OF 1
			SCALE: N/A

UNCONTROLLED DOCUMENT

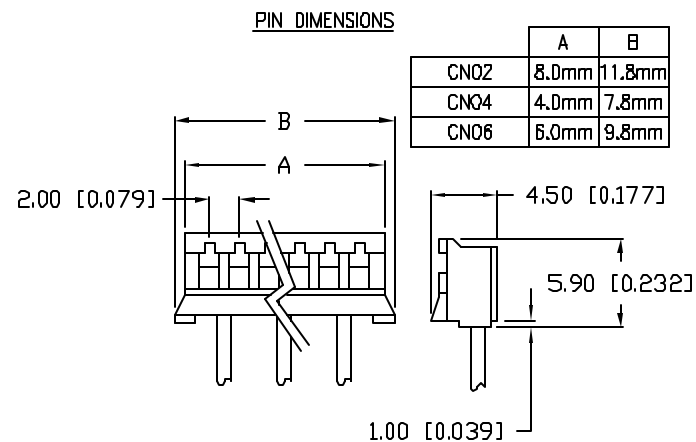
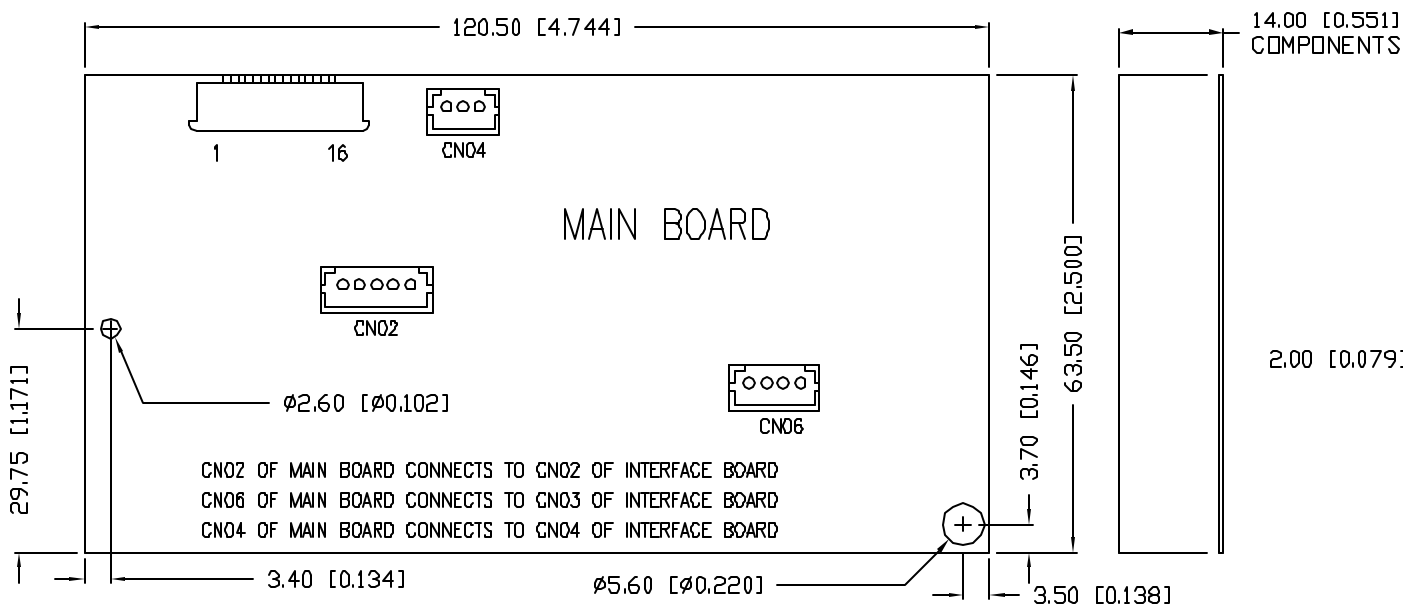
PART NUMBER  
LCM-960234GF-56FC

REV.  
A

REV.	E.C.N. NUMBER AND REVISION COMMENTS	DATE
A	SEE PAGE 1	



- CN01:
- RED WIRE: DC INPUT 12V
  - BLACK WIRE: GROUND
  - BLACK WIRE: GROUND
  - WHITE WIRE: COMPOSITE SIGNAL INPUT (NTSC)



UNCONTROLLED DOCUMENT

\*UNLESS OTHERWISE SPECIFIED TOLERANCES PER DECIMAL PRECISION ARE: X=±1 (±0.038), XX=±0.5 (±0.020), XXX=±0.25 (±0.010), XXXX=±0.127 (±0.005). LEAD SIZE=±0.05 (±0.002), LEAD LENGTH=±0.75 (±0.030). MIN= +DECIMAL PRECISION -0.00 MAX= +0.00 -DECIMAL PRECISION

REV.	PART NUMBER
A	LCM-960234GF-56FC

5.6" COLOR TFT MODULE,  
960 x 234 RESOLUTION.

**CONFIDENTIAL INFORMATION**  
THE INFORMATION CONTAINED IN THIS DOCUMENT IS THE PROPERTY OF LUMEX INC. EXCEPT AS SPECIFICALLY AUTHORIZED IN WRITING BY LUMEX INC., THE HOLDER OF THIS DOCUMENT SHALL KEEP ALL INFORMATION CONTAINED HEREIN CONFIDENTIAL AND SHALL PROTECT SAME IN WHOLE OR IN PART FROM DISCLOSURE AND DISSEMINATION TO ALL THIRD PARTIES.

**RELIABILITY NOTE**  
OUR MANY YEARS OF EXPERIENCE DATA ACCUMULATION INDICATE THAT SOLDER HEAT IS A MAJOR CAUSE OF EARLY AND FUTURE FAILURE. PLEASE PAY ATTENTION TO YOUR SOLDERING PROCESS.

290 E. HELEN ROAD  
PALATINE, IL 60067-6976  
PHONE: +1.847.359.2790  
US WEB: www.lumex.com  
TW WEB: www.lumex.com.tw

DRAWN BY: JG	CHECKED BY:	APPROVED BY:	DATE: 12.3.98
			PAGE: 1 OF 1
			SCALE: N/A