

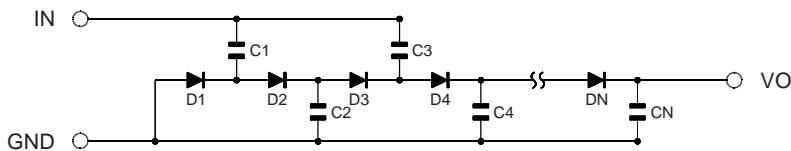
# 2,000V - 4,000V Miniature Hybrid Multiplier

100µA - 200µA • 8 - 10 Stages

ELECTRICAL CHARACTERISTICS AND PHYSICAL DIMENSIONS										
Part Number	Maximum A.C. Input Voltage (Vin)	Maximum D.C. Output Voltage (Vout)	Typical Output Current (Io)	Typical Frequency	# of Stages (1)	A	B	C	D	E
HM202P08	560Vpp	2000V	100µA	20-100kHz	8	.660 (16.8)	.250 (6.3)	.115 (2.9)	.012 (0.3)	.250 (6.3)
HM402N10	900Vpp	-4000V	200µA	20-100kHz	10	.830 (21.1)	.370 (9.4)	.200 (5.1)	.012 (0.3)	.250 (6.3)

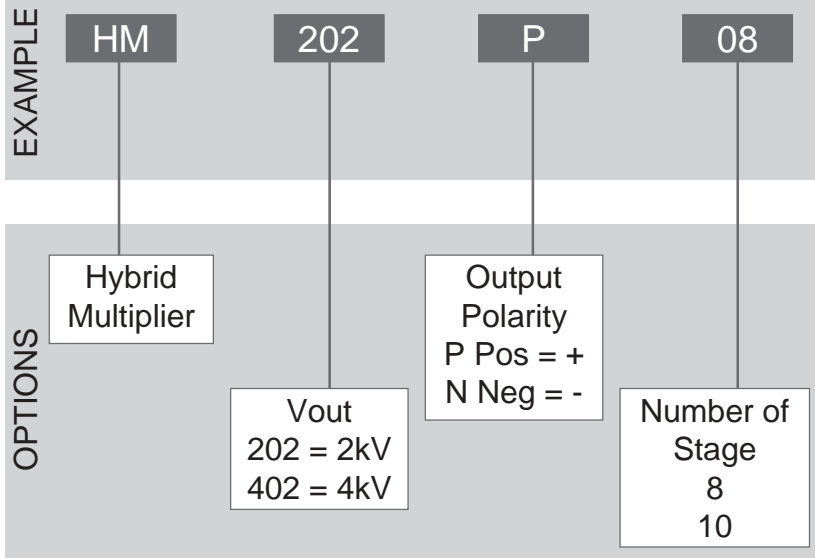
(1) 1 Diode + 1 Capacitor = 1 Stage \*Op.Temp.= -55°C to +100°C Stg.Temp.= -55°C to +100°C

Positive Output

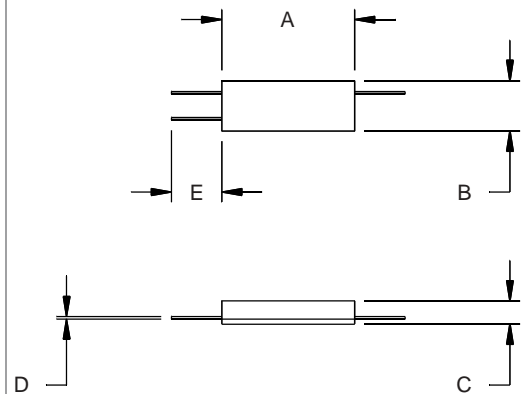


(Reversing the diode polarity from that shown, will result in a negative output multiplier)

## PART NUMBER



Contact the factory for additional custom configurations up to 1400Vpp input; 6kV, 500µA output.



Dimensions: In. (mm) • All temperatures are ambient unless otherwise noted. • Data subject to change without notice.



**VOLTAGE MULTIPLIERS INC.**  
8711 W. Roosevelt Ave.  
Visalia, CA 93291

TEL. 559-651-1402  
FAX 559-651-0740

www.voltagemultipliers.com  
www.highvoltagepowersupplies.com