

E-Series I/Q Modulator

940 - 960 MHz

EKIN2-950

V3.00

Features

- High Carrier Suppression
- High 3I and 5I Suppression

Specifications @ 25°C

Frequency Range (LO) Carrier I/Q		940 - 960 MHz DC - 2 MHz
(LO) Carrier Suppression ¹	Typical 40 dBc	Minimum 30 dBc
SSB Rejection ¹	Typical 40 dBc	Minimum 30 dBc
Harmonic Suppression ¹ 3 x I/Q 5 x I/Q	Typical 45 dBc 60 dBc	Minimum 40 dBc 55 dBc
Conversion Loss	Typical 9 dB	Maximum 10 dB
(LO) Carrier Power		+10 dBm
I/Q Drive Level		-10 dBm
LO - RF Isolation		Minimum 40 dB

1. When Q = +90° relative to I; Lower sideband is suppressed.
Related to wanted sideband power.

Operating Characteristics

Impedance	50 Ohms Nominal
-----------	-----------------

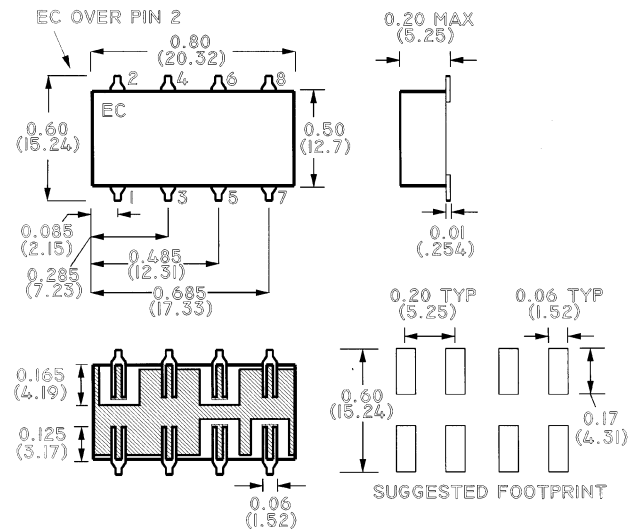
Ordering Information

Part No. EKIN2-950	Packaging Tube
-----------------------	-------------------

Absolute Maximum Ratings

Parameter	Absolute Maximum
Operating Temp.	-10°C to +70°C
Storage Temp.	-55°C to +100°C
Pin Temp (10 sec)	260°C

SM-7-1



Dimensions in () are in mm.
Unless Otherwise Noted: .x = ±0.04 (1.00)
.xx = ±0.02 (0.50)
.xxx = ±0.010 (0.250)

Pin Configuration

Function	Pin. No.
LO	1
RF	8
I	5
Q	6
Case Ground	2,3,4,7

Specifications Subject to Change Without Notice.

S 0696C

M/A-COM, Inc.

North America: Tel. (800) 366-2266 ■ Asia/Pacific: Tel. +81 (03) 3226-1671 ■ Europe: Tel. +44 (1344) 869 595
Fax (800) 618-8883 Fax +81 (03) 3226-1451 Fax +44 (1344) 300 020