

FEATURES

- LOW THERMAL RESISTANCE — 1.4° C/W
- CURRENT FOLDOVER PROTECTION — NEW
- HIGH TEMPERATURE VERSION — PA12H
- EXCELLENT LINEARITY — Class A/B Output
- WIDE SUPPLY RANGE — $\pm 10V$ to $\pm 50V$
- HIGH OUTPUT CURRENT — Up to $\pm 15A$ Peak

APPLICATIONS

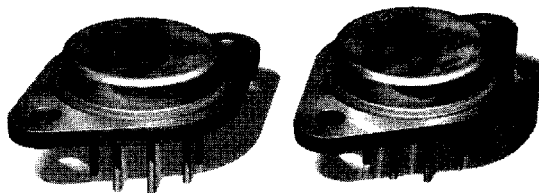
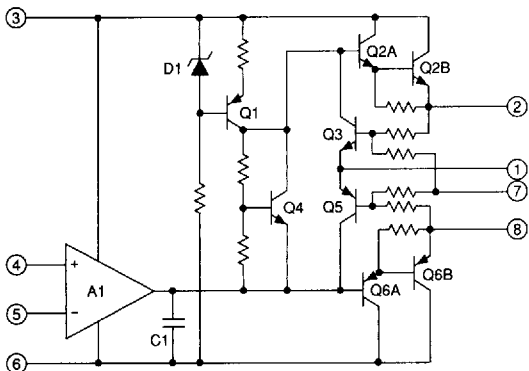
- MOTOR, VALVE AND ACTUATOR CONTROL
- MAGNETIC DEFLECTION CIRCUITS UP TO 10A
- POWER TRANSDUCERS UP TO 100kHz
- TEMPERATURE CONTROL UP TO 360V
- PROGRAMMABLE POWER SUPPLIES UP TO 90V
- AUDIO AMPLIFIERS UP TO 120W RMS

DESCRIPTION

The PA12 is a state of the art high voltage, very high output current operational amplifier designed to drive resistive, inductive and capacitive loads. For optimum linearity, especially at low levels, the output stage is biased for class A/B operation using a thermistor compensated base-emitter voltage multiplier circuit. The safe operating area (SOA) can be observed for all operating conditions by selection of user programmable current limiting resistors. For continuous operation under load, a heatsink of proper rating is recommended.

This hybrid integrated circuit utilizes thick film (cermet) resistors, ceramic capacitors and semiconductor chips to maximize reliability, minimize size and give top performance. Ultrasonically bonded aluminum wires provide reliable interconnections at all operating temperatures. The 8-pin TO-3 package is hermetically sealed and electrically isolated. The use of compressible isolation washers voids the warranty.

EQUIVALENT SCHEMATIC



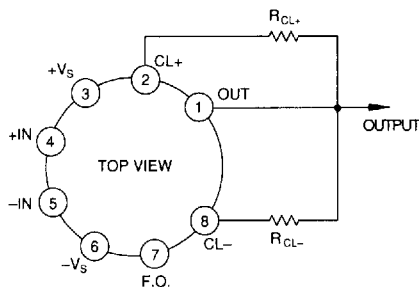
POWER RATING

Not all vendors use the same method to rate the power handling capability of a Power Op Amp. APEX rates the internal dissipation, which is consistent with rating methods used by transistor manufacturers and gives conservative results. Rating delivered power is highly application dependent and therefore can be misleading. For example, the 125W internal dissipation rating of the PA12 could be expressed as an output rating of 250W for audio (sine wave) or as 440W if using a single ended DC load. Please note that all vendors rate maximum power using an infinite heatsink.

THERMAL STABILITY

APEX has eliminated the tendency of class A/B output stages toward thermal runaway and thus has vastly increased amplifier reliability. This feature, not found in most other Power Op Amps, was pioneered by APEX in 1981 using thermistors which assure a negative temperature coefficient in the quiescent current. The reliability benefits of this added circuitry far outweigh the slight increase in component count.

EXTERNAL CONNECTIONS



0878636 0002385 T11

ABSOLUTE MAXIMUM RATINGS

SUPPLY VOLTAGE, +Vs to -Vs	100V
OUTPUT CURRENT, within SOA	15A
POWER DISSIPATION, internal	125W
INPUT VOLTAGE, differential	$\pm V_s - 3V$
INPUT VOLTAGE, common mode	$\pm V_s$
TEMPERATURE, pin solder -10s	300°C
TEMPERATURE, junction ¹	200°C
TEMPERATURE RANGE, storage	-65 to +150°C
OPERATING TEMPERATURE RANGE, case	-55 to +125°C

PA12/PA12A

SPECIFICATIONS

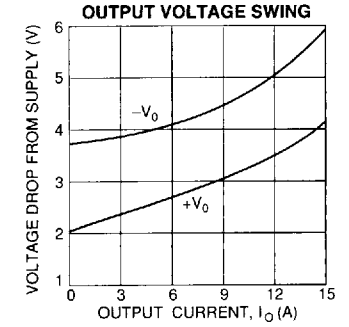
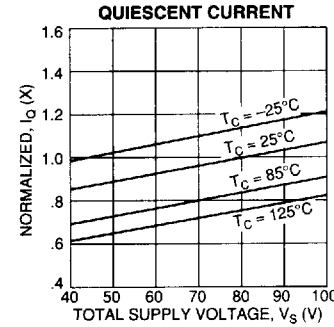
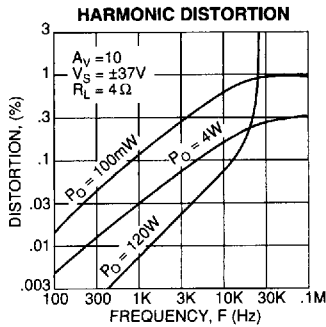
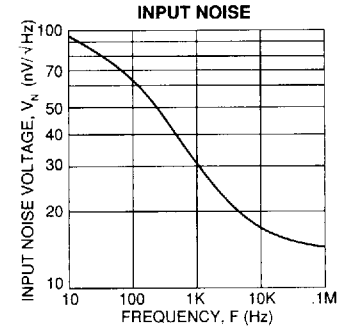
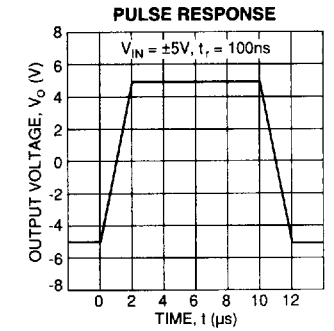
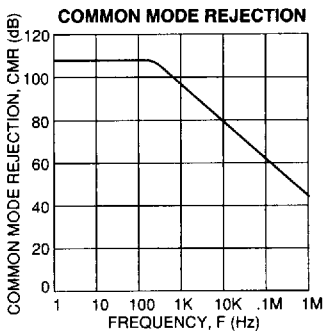
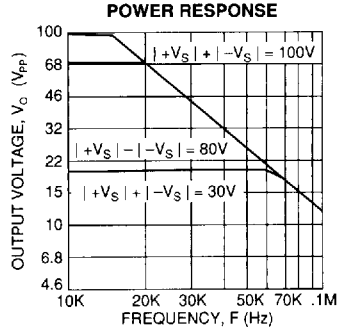
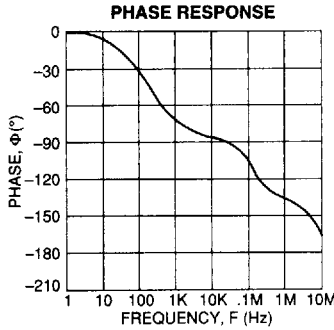
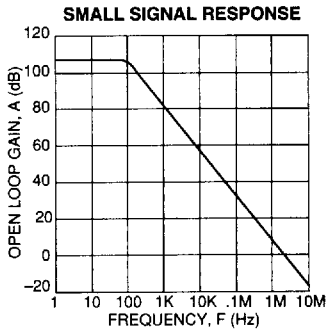
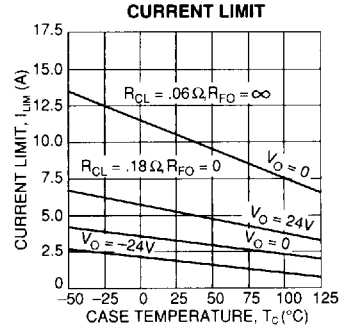
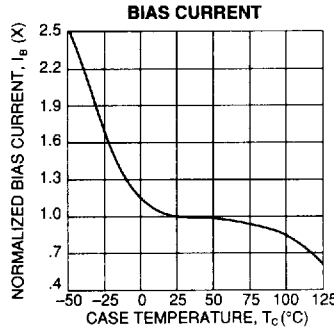
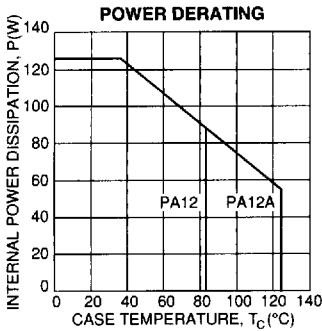
PARAMETER	TEST CONDITIONS ^{2,5}	PA12			PA12A			UNITS
		MIN	TYP	MAX	MIN	TYP	MAX	
INPUT								
OFFSET VOLTAGE, initial	$T_c = 25^\circ\text{C}$		± 2	± 6		± 1	± 3	mV
OFFSET VOLTAGE, vs. temperature	Full temperature range		± 10	± 65		*	± 40	$\mu\text{V}/^\circ\text{C}$
OFFSET VOLTAGE, vs. supply	$T_c = 25^\circ\text{C}$		± 30	± 200		*	*	$\mu\text{V}/\text{V}$
OFFSET VOLTAGE, vs. power	$T_c = 25^\circ\text{C}$		± 20	*		*	*	$\mu\text{V}/\text{W}$
BIAS CURRENT, initial	$T_c = 25^\circ\text{C}$		± 12	± 30		10	20	nA
BIAS CURRENT, vs. temperature	Full temperature range		± 50	± 500		*	*	$\text{pA}/^\circ\text{C}$
BIAS CURRENT, vs. supply	$T_c = 25^\circ\text{C}$		± 10	*		*	*	pA/V
OFFSET CURRENT, initial	$T_c = 25^\circ\text{C}$		± 12	± 30		± 5	± 10	nA
OFFSET CURRENT, vs. temperature	Full temperature range		± 50	*		*	*	$\text{pA}/^\circ\text{C}$
INPUT IMPEDANCE, DC	$T_c = 25^\circ\text{C}$		200	*		*	*	M Ω
INPUT CAPACITANCE	$T_c = 25^\circ\text{C}$		3	*		*	*	pF
COMMON MODE VOLTAGE RANGE ³	Full temperature range	$\pm V_s - 5$	$\pm V_s - 3$	*		*	*	V
COMMON MODE REJECTION, DC	Full temp. range, $V_{CM} = \pm V_s - 6V$	74	100	*		*	*	dB
GAIN								
OPEN LOOP GAIN at 10Hz	$T_c = 25^\circ\text{C}$, 1K Ω load		110	*		*	*	dB
OPEN LOOP GAIN at 10Hz	Full temp. range, 8 Ω load	96	108	*		*	*	dB
GAIN BANDWIDTH PRODUCT @ 1MHz	$T_c = 25^\circ\text{C}$, 8 Ω load		4	*		*	*	MHz
POWER BANDWIDTH	$T_c = 25^\circ\text{C}$, 8 Ω load	13	20	*		*	*	kHz
PHASE MARGIN	Full temp. range, 8 Ω load		20	*		*	*	°
OUTPUT								
VOLTAGE SWING ³	$T_c = 25^\circ\text{C}$, PA12 = 10A, PA12A = 15A	$\pm V_s - 6$	*	*		*	*	V
VOLTAGE SWING ³	$T_c = 25^\circ\text{C}$, $I_o = 5A$	$\pm V_s - 5$	*	*		*	*	V
VOLTAGE SWING ³	Full temp. range, $I_o = 80\text{mA}$	$\pm V_s - 5$	*	*		*	*	V
CURRENT, peak	$T_c = 25^\circ\text{C}$	10			15	*	*	A
SETTLING TIME to .1%	$T_c = 25^\circ\text{C}$, 2V step		2	*		*	*	μs
SLEW RATE	$T_c = 25^\circ\text{C}$	2.5	4	*		*	*	V/ μs
CAPACITIVE LOAD	Full temperature range, $A_v = 1$			1.5		*	*	nF
CAPACITIVE LOAD	Full temperature range, $A_v > 10$			SOA		*	*	nF
POWER SUPPLY								
VOLTAGE	Full temperature range	± 10	± 40	± 45	*	*	± 50	V
CURRENT, quiescent	$T_c = 25^\circ\text{C}$		25	50		*	*	mA
THERMAL								
RESISTANCE, AC, junction to case ⁴	$T_c = -55$ to $+125^\circ\text{C}$, $F > 60\text{Hz}$.8	.9		*	*	$^\circ\text{C}/\text{W}$
RESISTANCE, DC, junction to case	$T_c = -55$ to $+125^\circ\text{C}$		1.25	1.4		*	*	$^\circ\text{C}/\text{W}$
RESISTANCE, junction to air	$T_c = -55$ to $+125^\circ\text{C}$		30	*		*	*	$^\circ\text{C}/\text{W}$
TEMPERATURE RANGE, case	Meets full range specification	-25		+85	-55		+125	$^\circ\text{C}$

NOTES: * The specification of PA12A is identical to the specification for PA12 in applicable column to the left.

1. Long term operation at the maximum junction temperature will result in reduced product life. Derate internal power dissipation to achieve high MTTF.
2. The power supply voltage for all tests is ± 40 , unless otherwise noted as a test condition.
3. $+V_s$ and $-V_s$ denote the positive and negative supply rail respectively. Total V_s is measured from $+V_s$ to $-V_s$.
4. Rating applies if the output current alternates between both output transistors at a rate faster than 60Hz.
5. Full temperature range specifications are guaranteed but not 100% tested.

CAUTION

The internal substrate contains beryllia (BeO). Do not break the seal. If accidentally broken, do not crush, machine, or subject to temperatures in excess of 850°C to avoid generating toxic fumes.



GENERAL

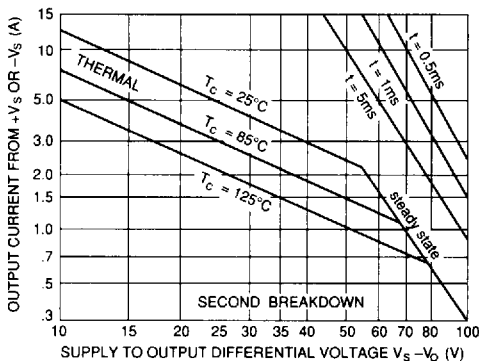
Please read Application Note 1, which covers stability, supplies, heatsinking, mounting, current limit, SOA interpretation, and specification interpretation. Additional information can be found in the application notes. For information on the package outline, heatsinks, and mounting hardware, consult the "Accessory and Package Mechanical Data" section of the handbook.

SAFE OPERATING AREA (SOA)

The output stage of most power amplifiers has three distinct limitations:

1. The current handling capability of the transistor geometry and the wire bonds.
2. The second breakdown effect which occurs whenever the simultaneous collector current and collector-emitter voltage exceeds specified limits.
3. The junction temperature of the output transistors.

The SOA curves combine the effect of all limits for this Power Op



Amp. For a given application, the direction and magnitude of the output current should be calculated or measured and checked against the SOA curves. This is simple for resistive loads but more complex for reactive and EMF generating loads. However, the following guidelines may save extensive analytical efforts.

1. Capacitive and dynamic* inductive loads up to the following maximum are safe with the current limits set as specified.

$\pm V_s$	CAPACITIVE LOAD		INDUCTIVE LOAD	
	$I_{LIM} = 5A$	$I_{LIM} = 10A$	$I_{LIM} = 5A$	$I_{LIM} = 10A$
50V	200 μ F	125 μ F	5mH	2.0mH
40V	500 μ F	350 μ F	15mH	3.0mH
35V	2.0mF	850 μ F	50mH	5.0mH
30V	7.0mF	2.5mF	150mH	10mH
25V	25mF	10mF	500mH	20mH
20V	60mF	20mF	1,000mH	30mH
15V	150mF	60mF	2,500mH	50mH

*If the inductive load is driven near steady state conditions, allowing the output voltage to drop more than 8V below the supply rail with $I_{LIM} = 15A$ or 25V below the supply rail with $I_{LIM} = 5A$ while the amplifier is current limiting, the inductor must be capacitively coupled or the current limit must be lowered to meet SOA criteria.

2. The amplifier can handle any EMF generating or reactive load and short circuits to the supply rail or common if the current limits are set as follows at $T_c = 25^\circ C$:

$\pm V_s$	SHORT TO $\pm V_s$, C, L, OR EMF LOAD	SHORT TO COMMON
50V	.30A	2.4A
40V	.58A	2.9A
35V	.87A	3.7A
30V	1.5A	4.1A
25V	2.4A	4.9A
20V	2.9A	6.3A
15V	4.2A	8.0A

These simplified limits may be exceeded with further analysis using the operating conditions for a specific application.

CURRENT LIMITING

Refer to Application Note 9, "Current Limiting", for details of both fixed and foldover current limit operation. Visit the Apex web site at www.apexmicrotech.com for a copy of `limit.xls` which plots current limits vs. steady state SOA. Beware that current limit should be thought of as a $\pm 20\%$ function initially and varies about 2:1 over the range of $-55^\circ C$ to $125^\circ C$.

For fixed current limit, leave pin 7 open and use equations 1 and 2.

$$R_{CL} = 0.65/L_{CL} \quad (1)$$

$$I_{CL} = 0.65/R_{CL} \quad (2)$$

Where:

I_{CL} is the current limit in amperes.

R_{CL} is the current limit resistor in ohms.

For certain applications, foldover current limit adds a slope to the current limit which allows more power to be delivered to the load without violating the SOA. For maximum foldover slope, ground pin 7 and use equations 3 and 4.

$$I_{CL} = \frac{0.65 + (V_o * 0.014)}{R_{CL}} \quad (3)$$

$$R_{CL} = \frac{0.65 + (V_o * 0.014)}{I_{CL}} \quad (4)$$

Where:

V_o is the output voltage in volts.

Most designers start with either equation 1 to set R_{CL} for the desired current at 0v out, or with equation 4 to set R_{CL} at the maximum output voltage. Equation 3 should then be used to plot the resulting foldover limits on the SOA graph. If equation 3 results in a negative current limit, foldover slope must be reduced. This can happen when the output voltage is the opposite polarity of the supply conducting the current.

In applications where a reduced foldover slope is desired, this can be achieved by adding a resistor (R_{FO}) between pin 7 and ground. Use equations 4 and 5 with this new resistor in the circuit.

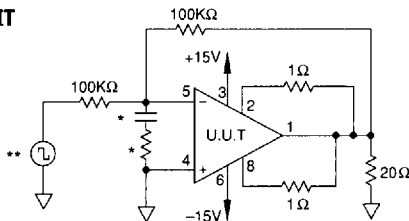
$$I_{CL} = \frac{0.65 + \frac{V_o * 0.14}{10.14 + R_{FO}}}{R_{CL}} \quad (5)$$

$$R_{CL} = \frac{0.65 + \frac{V_o * 0.14}{10.14 + R_{FO}}}{I_{CL}} \quad (6)$$

Where:

R_{FO} is in K ohms.

SG	PARAMETER	SYMBOL	TEMP.	POWER	TEST CONDITIONS	MIN	MAX	UNITS
1	Quiescent current	I_o	25°C	±40V	$V_{IN} = 0, A_v = 100, R_{CL} = .1\Omega$		50	mA
1	Input offset voltage	V_{OS}	25°C	±40V	$V_{IN} = 0, A_v = 100$		±6	mV
1	Input offset voltage	V_{OS}	25°C	±10V	$V_{IN} = 0, A_v = 100$		±12	mV
1	Input offset voltage	V_{OS}	25°C	±45V	$V_{IN} = 0, A_v = 100$		±7	mV
1	Input bias current, +IN	$+I_B$	25°C	±40V	$V_{IN} = 0$		±30	nA
1	Input bias current, -IN	$-I_B$	25°C	±40V	$V_{IN} = 0$		±30	nA
1	Input offset current	I_{OS}	25°C	±40V	$V_{IN} = 0$		±30	nA
3	Quiescent current	I_o	-55°C	±40V	$V_{IN} = 0, A_v = 100, R_{CL} = .1\Omega$		100	mA
3	Input offset voltage	V_{OS}	-55°C	±40V	$V_{IN} = 0, A_v = 100$		±11.2	mV
3	Input offset voltage	V_{OS}	-55°C	±10V	$V_{IN} = 0, A_v = 100$		±17.2	mV
3	Input offset voltage	V_{OS}	-55°C	±45V	$V_{IN} = 0, A_v = 100$		±12.2	mV
3	Input bias current, +IN	$+I_B$	-55°C	±40V	$V_{IN} = 0$		±115	nA
3	Input bias current, -IN	$-I_B$	-55°C	±40V	$V_{IN} = 0$		±115	nA
3	Input offset current	I_{OS}	-55°C	±40V	$V_{IN} = 0$		±115	nA
2	Quiescent current	I_o	125°C	±40V	$V_{IN} = 0, A_v = 100, R_{CL} = .1\Omega$		50	mA
2	Input offset voltage	V_{OS}	125°C	±40V	$V_{IN} = 0, A_v = 100$		±12.5	mV
2	Input offset voltage	V_{OS}	125°C	±10V	$V_{IN} = 0, A_v = 100$		±18.5	mV
2	Input offset voltage	V_{OS}	125°C	±45V	$V_{IN} = 0, A_v = 100$		±13.5	mV
2	Input bias current, +IN	$+I_B$	125°C	±40V	$V_{IN} = 0$		±70	nA
2	Input bias current, -IN	$-I_B$	125°C	±40V	$V_{IN} = 0$		±70	nA
2	Input offset current	I_{OS}	125°C	±40V	$V_{IN} = 0$		±70	nA
4	Output voltage, $I_o = 10A$	V_o	25°C	±16V	$R_L = 1\Omega$	10		V
4	Output voltage, $I_o = 80mA$	V_o	25°C	±45V	$R_L = 500\Omega$	40		V
4	Output voltage, $I_o = 5A$	V_o	25°C	±35V	$R_L = 6\Omega$	30		V
4	Current limits	I_{CL}	25°C	±14V	$R_L = 6\Omega, R_{CL} = 1\Omega$.6	.89	A
4	Stability/noise	E_N	25°C	±40V	$R_L = 500\Omega, A_v = 1, C_L = 1.5nF$		1	mV
4	Slew rate	SR	25°C	±40V	$R_L = 500\Omega$	2.5	10	V/ μ s
4	Open loop gain	A_{OL}	25°C	±40V	$R_L = 500\Omega, F = 10Hz$	96		dB
4	Common mode rejection	CMR	25°C	±15V	$R_L = 500\Omega, F = DC, V_{CM} = \pm 9V$	74		dB
6	Output voltage, $I_o = 8A$	V_o	-55°C	±14V	$R_L = 1\Omega$	8		V
6	Output voltage, $I_o = 80mA$	V_o	-55°C	±45V	$R_L = 500\Omega$	40		V
6	Stability/noise	E_N	-55°C	±40V	$R_L = 500\Omega, A_v = 1, C_L = 1.5nF$		1	mV
6	Slew rate	SR	-55°C	±40V	$R_L = 500\Omega$	2.5	10	V/ μ s
6	Open loop gain	A_{OL}	-55°C	±40V	$R_L = 500\Omega, F = 10Hz$	96		dB
6	Common mode rejection	CMR	-55°C	±15V	$R_L = 500\Omega, F = DC, V_{CM} = \pm 9V$	74		dB
5	Output voltage, $I_o = 8A$	V_o	125°C	±14V	$R_L = 1\Omega$	8		V
5	Output voltage, $I_o = 80mA$	V_o	125°C	±45V	$R_L = 500\Omega$	40		V
5	Stability/noise	E_N	125°C	±40V	$R_L = 500\Omega, A_v = 1, C_L = 1.5nF$		1	mV
5	Slew rate	SR	125°C	±40V	$R_L = 500\Omega$	2.5	10	V/ μ s
5	Open loop gain	A_{OL}	125°C	±40V	$R_L = 500\Omega, F = 10Hz$	96		dB
5	Common mode rejection	CMR	125°C	±15V	$R_L = 500\Omega, F = DC, V_{CM} = \pm 9V$	74		dB

BURN IN CIRCUIT


* These components are used to stabilize device due to poor high frequency characteristics of burn in board.

** Input signals are calculated to result in internal power dissipation of approximately 2.1W at case temperature = 125°C.

0878636 0002389 667

FEATURES

- LOW COST 200° C VERSION OF PA12
- OUTPUT CURRENT at 200° C — ±1A
- FULL SPECIFICATIONS — -25° C to +125° C
- WIDE SUPPLY RANGE — ±10 to ±45V
- CURRENT FOLDOVER PROTECTION
- EXCELLENT LINEARITY — Class A/B Output

APPLICATIONS

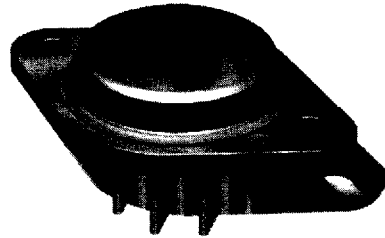
- MOTOR, VALVE AND ACTUATOR CONTROL
- POWER TRANSDUCERS UP TO 100kHz
- PROGRAMMABLE POWER SUPPLIES UP TO 80V
- TRANSMISSION LINE DRIVER

DESCRIPTION

The PA12H is a low cost, high temperature Power Op Amp made especially for short term use in extreme environmental situations such as down hole instrumentation. The amplifier can power mechanical or electronic transducers and can drive the long transmission lines associated with these applications.

The PA12H, based on the standard PA12's very high power level, leaves a six watt capability after being derated for operation at a case temperature of 200°C. To meet the high temperature requirements for up to 200 hours, polyimid has replaced the standard epoxy for attaching the small signal devices.

These hybrid integrated circuits utilize thick film conductors, ceramic capacitors and silicon semiconductors to maximize reliability, minimize size and give top performance. Ultrasonically bonded aluminum wires provide reliable interconnections at all operating temperatures. The 8-pin TO-3 package (see Package Outlines) is hermetically sealed and isolated. The use of compressible thermal washers and/or improper mounting torque will void the product warranty. Please see "General Operating Considerations".



SPECIFICATIONS

Specifications of the standard PA12 apply to the PA12H with the exception of the temperature range extensions

1. The operating and storage temperature ABSOLUTE MAXIMUM RATINGS extend to +200°C.
2. Static and dynamic tests are performed at +125°C as shown in SG 2 and SG 5 of the military PA12M data sheet.
3. Additional tests at $T_c = 200^\circ\text{C}$:
 - A. Quiescent current = 100mA max at $\pm V_s = 45$.
 - B. Voltage swing = $\pm V_s - 4$ ($I_o = 1A, \pm V_s = 15$)

GENERAL CONSIDERATIONS

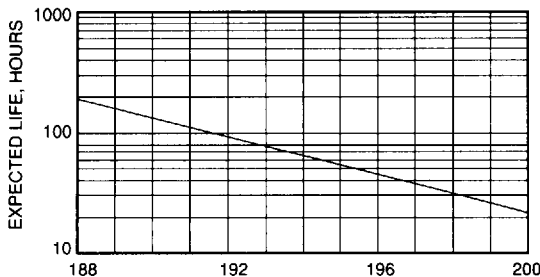
The primary aim of the PA12H is to provide a reasonable level of power output at a minimum cost. To achieve this end, full dynamic tests are performed up to 125°C, with only minimal 100% testing at 200°C. This approach saves nearly an order of magnitude over the cost of a fully tested long life product, but does require recognition of two limitations.

First, input parameters such as voltage offset and bias current are not tested above 125°C. This could lead to accuracy problems if the PA12H is used as a precision computational element. Solutions to this limitation include contacting the factory regarding additional testing at higher temperatures or using high temperature small signal amplifiers for computational tasks.

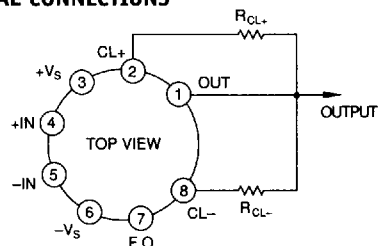
The second limitation of life span requires the PA12H to be used in short term applications. This requirement is mandated by the low cost design concept. At 200°C component degradation is nearly as severe during storage as during actual operation. This must be taken into account when scheduling actual implementation of the finished package.

Please consult the PA12 data sheet for basic information on this amplifier; the PA12M data sheet for details on +125°C tests, and Power Operational Amplifier handbook section "General Operating Considerations," for recommendations on supplies, stability, heatsinks and bypassing.

CALCULATED LIFE EXPECTANCY



EXTERNAL CONNECTIONS



0878636 0002390 389