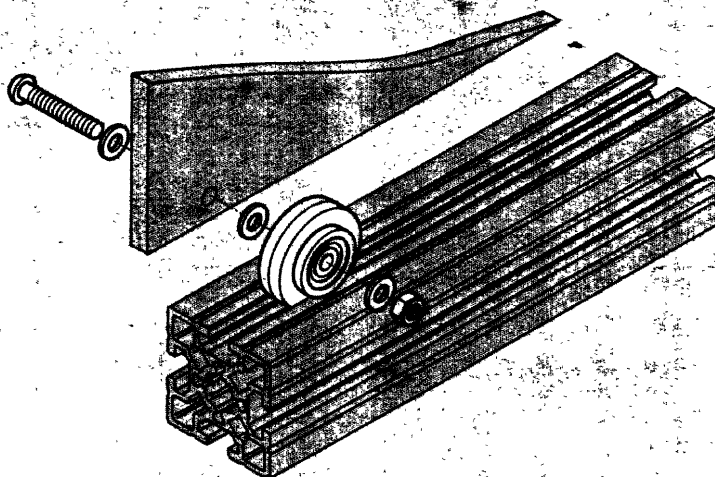


## Guide Wheel

- Material
  - Guide wheel PA 6, black
  - Central ring steel, galvanized
  - Ball bearings steel
- Bearing capacity max. 15 kg
- Panel thickness 6 to 10 mm

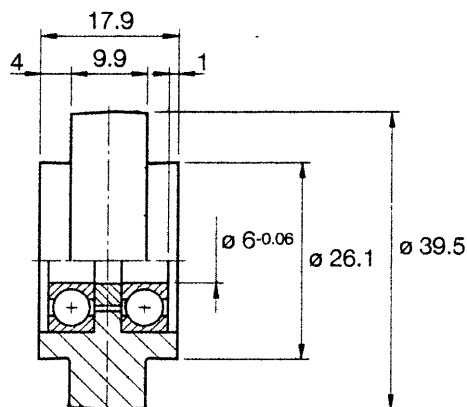
Ball-bearing guide wheel with central rim to guide panels, panes, etc. The wheel is fixed to the adjoining structure and the panel by means of two spacer disks.



### Scope of supply

Guide wheel mounting kit

- 1 pc. M6 x 35 oval head screw
- 3 pcs. spacer disks
- 1 pc. M6 hex nut



Description	Part number
Guide wheel	0107-210-28
Guide wheel mounting kit	0107-200-06