

Thick film thermal printhead (8dots / mm)

KF2008-GH40A

The KF2008-GH40A is a standard type A4-size thick-film thermal printhead, developed mainly for facsimiles.

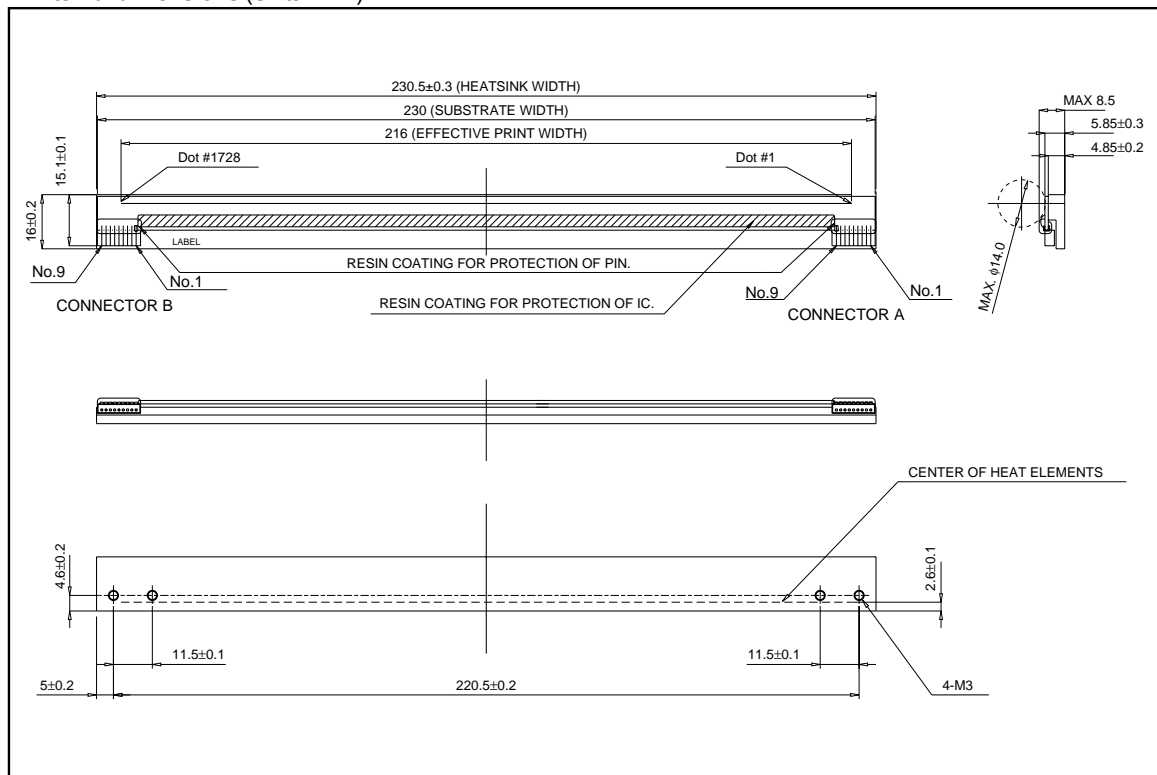
●Applications

Facsimiles
Electric whiteboard
Measuring terminal printers

●Features

- 1) A new pin connector structure greatly reduces the size and weight.
- 2) A newly developed 144-bit IC levels the strobe partition and reduces the noise level.
- 3) One rank resistance value of $3000\Omega \pm 3\%$ eliminates the inconvenience of rank selection.

●External dimensions (Units : mm)



Printheads

●Equivalent circuit

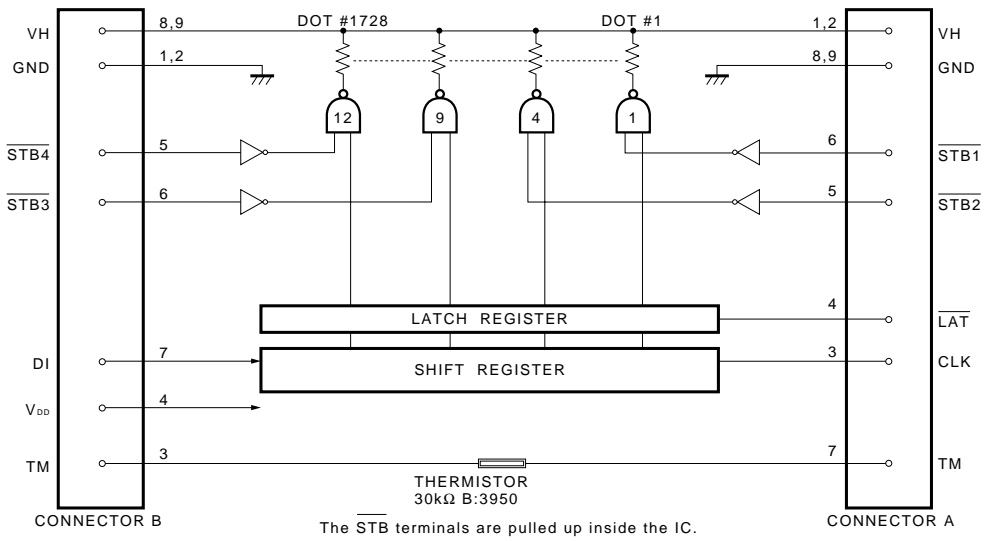


Fig.1

●Pin assignments

CONNECTOR B	
No.	Circuit
1	GND
2	GND
3	TM
4	V _{DD}
5	$\overline{\text{STB4}}$
6	$\overline{\text{STB3}}$
7	DI
8	VH
9	VH

CONNECTOR A	
No.	Circuit
1	VH
2	VH
3	CLK
4	$\overline{\text{LAT}}$
5	$\overline{\text{STB2}}$
6	$\overline{\text{STB1}}$
7	TM
8	GND
9	GND

Printheads

●Timing chart

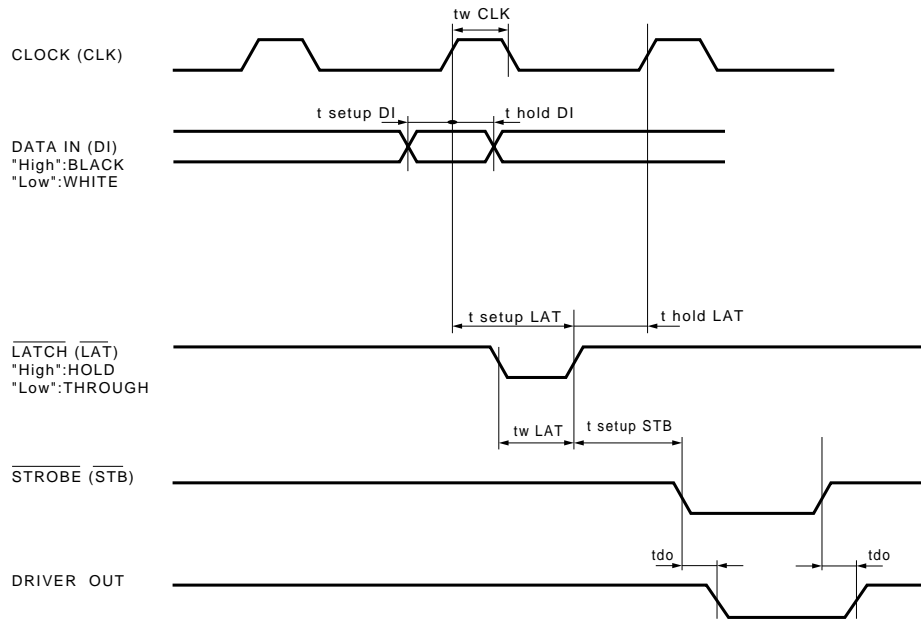


Fig.2

●Characteristics

Parameter	Symbol	Typical	Unit
Effective printing width	-	216.0	mm
Dot pitch	-	0.125	mm
Total dot number	-	1728	dots
Average resistance value	Rave	3000	Ω
Applied voltage	V_H	24.0	V
Applied power	P_O	0.17	W/dot
Print cycle	SLT	10	ms
Pulse width	T_{ON}	1.95	ms
Maximum number of dots energized simultaneously	-	432	dots
Maximum clock frequency	-	4	MHz
Maximum roller diameter	-	$\phi 14.0$	mm
Running life / pulse life	-	$30/3 \times 10^7$	km/pulses
Operating temperature	-	5~45	$^{\circ}\text{C}$

Printheads

●Electrical characteristic curves

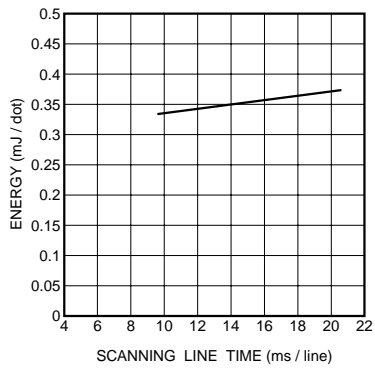


Fig.3 Adaptive speed chart

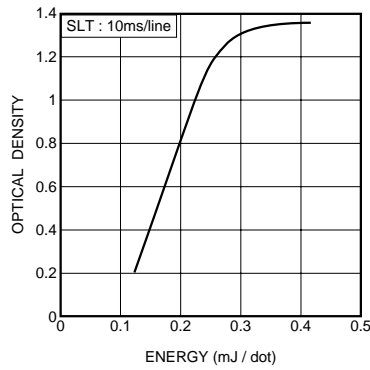


Fig.4 Representative density curve

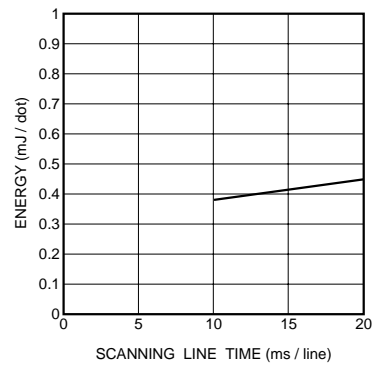


Fig.5 Maximum energy curve

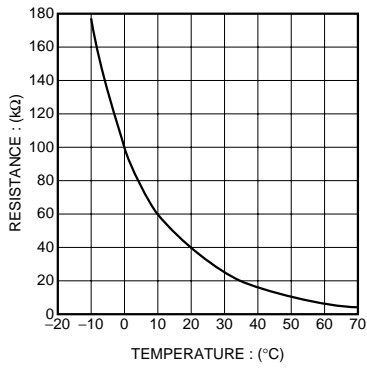


Fig.6 Thermistor curve