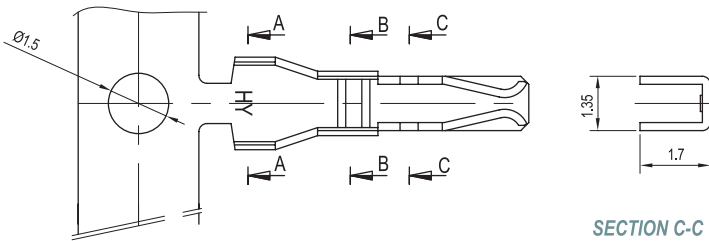
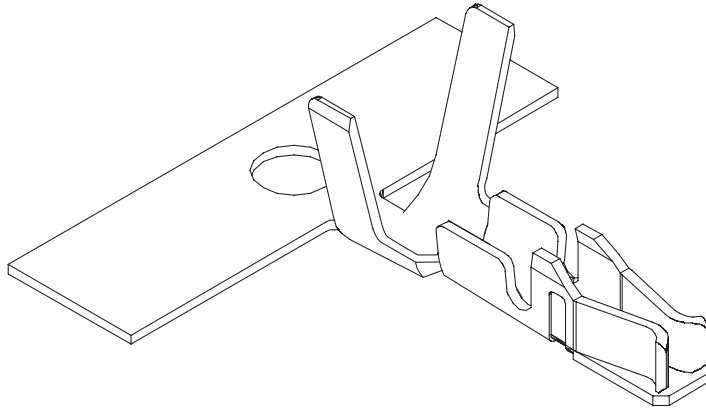


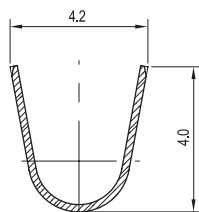
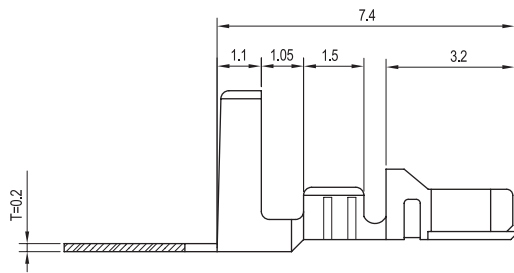
# 2.00mm (0.079") PITCH CONNECTOR

Wire-to-Board  
Crimp Terminal

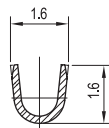
20015TS



SECTION C-C



SECTION A-A



SECTION B-B

## Material

| I/NO | DESCRIPTION | TITLE   | AWG     | MATERIAL        | FINISH     |
|------|-------------|---------|---------|-----------------|------------|
| 1    | TERMINAL    | 20015TS | #22~#28 | Phosphor Bronze | Tin Plated |

## Specification

| ITEM                   | SPEC   |
|------------------------|--|
| Voltage Rating         | AC/DC 600V   |
| Current Rating         | AC/DC 1A   |
| Operating Temperature  | -25℃~+85℃  |
| Contact Resistance     | 30mΩ MAX   |
| Withstanding Voltage   | AC1800V/1min   |
| Insulation Resistance  | 1000MΩ MIN   |
| Applicable Wire        | AWG #22~#28  |
| Applicable P.C.B       | -  |
| Applicable FPC/FFC     | -  |
| Solder Height          | -  |
| Crimp Tensile Strength | AWG #22 : 2.5kgfMIN<br>AWG #24 : 2.0kgfMIN<br>AWG #26 : 1.5kgfMIN<br>AWG #28 : 1.0kgfMIN |
| UL FILE NO             | -  |