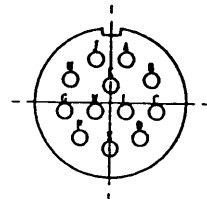
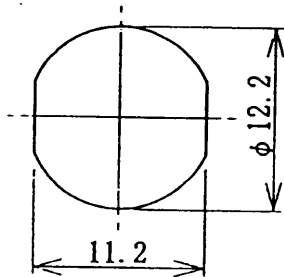


MOUNTING HOLE DIMENSIONS

NUMBER OF CONTACT
(VIEW ON TERMINATION SIDE OF INSULATOR)



NOTES

1. CHARACTERISTICS
 DIELECTRIC WITHSTANDING VOLTAGE : 300V rms AT SEA LEVEL.
 INSULATION RESISTANCE : 1000MΩ MIN AT 100V D. C.
 CONTACT RESISTANCE : 10mΩ MAX D. C. 1A MAX
2. RATING
 VOLTAGE RATING : 100V rms MAX AT SEA LEVEL
 CURRENT RATING : 2A MAX
3. SOLDER BUCKET SIZE : 0.5 DIA
4. MARKING : PRC07 T. M. W PAT

7	STEEL BALL	STEEL	CHROMIUM PLATED	3	
6	SHELL	BRASS	NICKEL PLATED	1	
5	FRONT INSULATOR	PBT RESIN	—	1	
4	WASHER	BRASS	NICKEL PLATED	1	
3	HEX NUT	BRASS	NICKEL PLATED	1	
2	REAR INSULATOR	PBT RESIN	—	1	
1	SOCKET CONTACT	BERYLLIUM COPPER ALLOY	GOLD FLASH OVER NICKEL PLATED	1 2	
品番 ITEM	部品名 DESCRIPTION	材質 MATERIAL	処理 TREATMENT	数量 QTY	備考 REMARKS

記号 SYM	変更 REVISION	第三角法 PROJECTION	尺度 SCALE 2 / 1	T.M.W. TAJIMI ELECTRONICS CO., LTD.			
		単位 UNITS mm	製図 DRAWN S. SATO	DATE 11 JAN 1999	PRC07-R12F		
公差 TOLERANCES ON ANGLE . X . XX	設計 ENGR T. Waki	DATE 11 JAN 1999	PRC07-1011				
仕 寸 公差 SPEC. K	検図 CHK T. Waki	DATE 11 JAN 1999					変更 REV 1
	承認 APPD K. Yagi	DATE 12 JAN 1999					SHEET