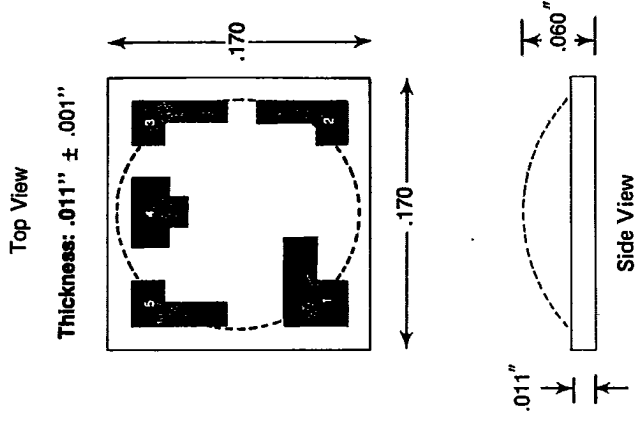
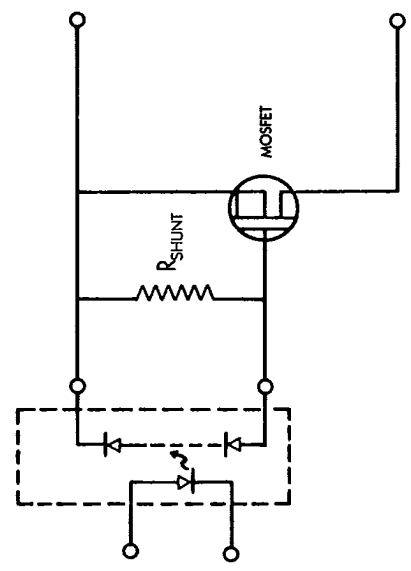


# ISO CHIP DIG-11-06-030C, DIG-11-08-050C, DIG-11-06-150C

Coupled Characteristics (TA = 25°C)	Symbol	DIG-11-06-030 MIN. TYP.	DIG-11-08-050 MIN. TYP.	DIG-11-06-150 MIN. TYP.	Unit
Open Circuit Voltage @ IF = 10mA @ IF = 30mA	VOC	5.0 6.0	8.0 9.0	5.0 6.0	V
Short Circuit Current @ IF = 10mA @ IF = 30mA	ISC	1.0 2.0	5.0 15.0	3.0 10.0	μA
On Time @ IF = 50 mA, PW = 100 μS, f = 1 KHz RSHUNT = 10 Meg, C = 10 pf	tON	—	5.0	—	μS
Off Time @ IF = 50 mA, PW = 100 μS, f = 1 KHz RSHUNT = 10 Meg, C = 10 pf	tOFF	—	300	—	μS
Operating Temperature	T <sub>(op)</sub>	-50° to 80°			°C
Temperature Coefficient	θ	-40			mV/°C



## Direct Gate Driver for MOSFET



R<sub>SHUNT</sub> can be adjusted to obtain optimum values of t<sub>ON</sub> and t<sub>OFF</sub>. Typically, the Optimum R<sub>SHUNT</sub> varies from 1 Megohm for DIG-11-06-150C to about 10 Megohm for DIG-11-06-030C.

