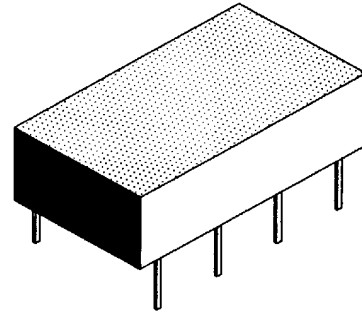




T-47-13
AVL-SERIES

14 PIN, MILITARY GRADE, TRIPLE OUTPUT TTL ACTIVES

LOW POWER SCHOTTKY					
DC Electrical Characteristics					
Parameter	Test Condition	Min	Max	Unit	
V _{OH}	High-Level Output Voltage	V _{CC} =min. V _{IL} =max. I _{OH} =-0.4mA	2.5		V
V _{OL}	Low Level Output Voltage	V _{CC} =min. V _{IH} =min I _{OL} =4mA		0.4	V
V _{IK}	Input Clamp Voltage	V _{CC} =min. I _I =-18mA		-1.5	V
I _{IH}	High-Level Input Current	V _{CC} =max. V _{IN} =2.7V		20	uA
I _{IL}	Low-Level Input Current	V _{CC} =max. V _{IN} =5.25V		100	uA
I _{OS}	Short Circuit Output Current	V _{CC} =max. V _{IN} =0.4V		-0.4	mA
I _{CC}	Supply Current	V _{CC} =max. V _{OUT} =0 (One output at a time)	-20	-100	mA
N _H	Fanout High-Level Output	V _{CC} =max. V _{IN} =0V or V _{IN} =2.7V		50	mA
N _L	Fanout Low-Level Output	V _{CC} =max.	20		LSTTL LOAD
			10		LSTTL LOAD

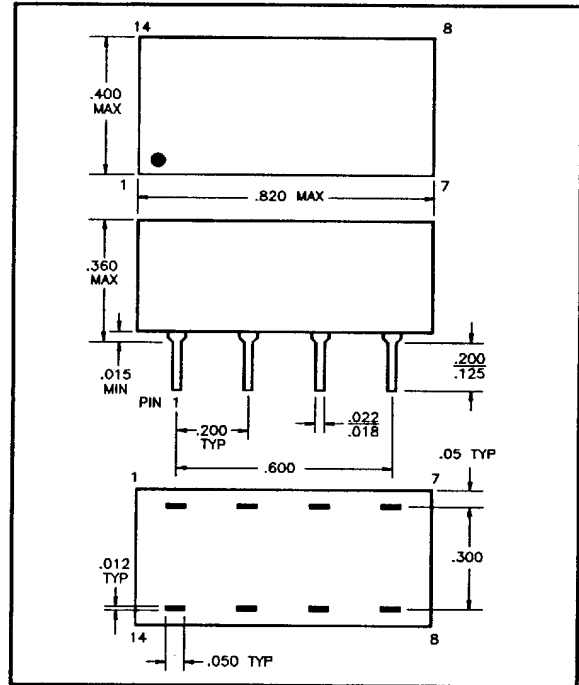


ALSO AVAILABLE IN FOLLOWING LOGIC FAMILIES

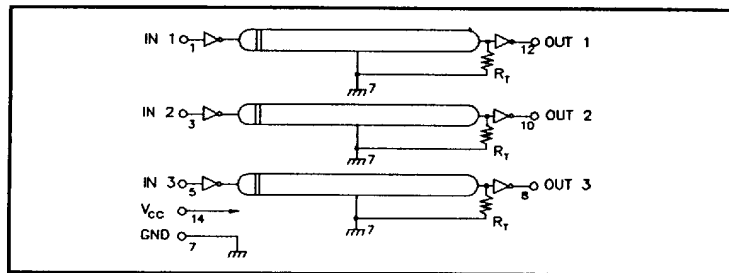
CMOS (HCT) AVN-SERIES
FAST AVO-SERIES
STTL AVP-SERIES

Recommended Operating Conditions				
Parameter	Min	Max	Unit	
V _{CC}	4.5	5.5	V	
V _{IH}	2.0		V	
V _{IL}		0.7	V	
I _{OH}		-4	mA	
I _{OL}		4	mA	
PW	100		%	
T _A	-55	+125	°C	

Input Pulse Test Conditions @ 25°C			
Parameter	Min	Max	Unit
E _{IN}		3.2	Volts
PW		110	%
TR _I		2.0	nS
PRR		1.0	MHz
		100	KHz
V _{CC}		5.0	Volts



SECTION DELAY ± 2 nS OR 5%	POLARA P/N AVL - PINOUT
5	AVL-0005
10	AVL-0010
15	AVL-0015
20	AVL-0020
25	AVL-0025
30	AVL-0030
35	AVL-0035
40	AVL-0040
45	AVL-0045
50	AVL-0050
55	AVL-0055
60	AVL-0060
65	AVL-0065
70	AVL-0070
75	AVL-0075
100	AVL-0100
150	AVL-0150
200	AVL-0200
250	AVL-0250



* ANY VALUES NOT SHOWN, AVAILABLE UPON REQUEST.
COMPLIES WITH DESC SPEC. 87035