



TO-92 Encapsulate Three-terminal voltage regulator

CJ79L09 Three-terminal negative voltage regulator

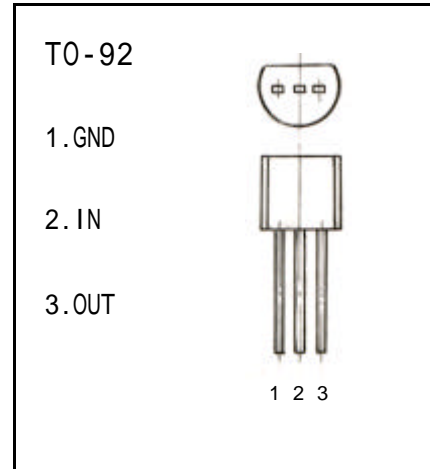
FEATURES

Maximum Output current

I_{OM} : 0.1 A

Output voltage

V_o : -9 V



ABSOLUTE MAXIMUM RATINGS (Operating temperature range applies unless otherwise specified)

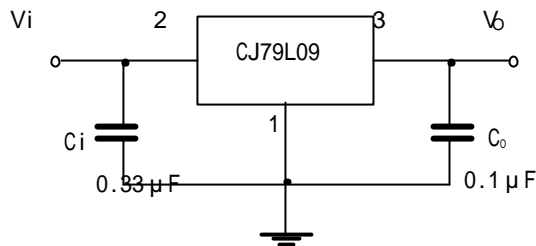
Parameter	Symbol	Value	Unlts
Input Voltage	V_i	-30	V
Operating Junction Temperature Range	T_{OPR}	0—+125	
Storage Temperature Range	T_{STG}	-55—+150	

ELECTRICAL CHARACTERISTICS

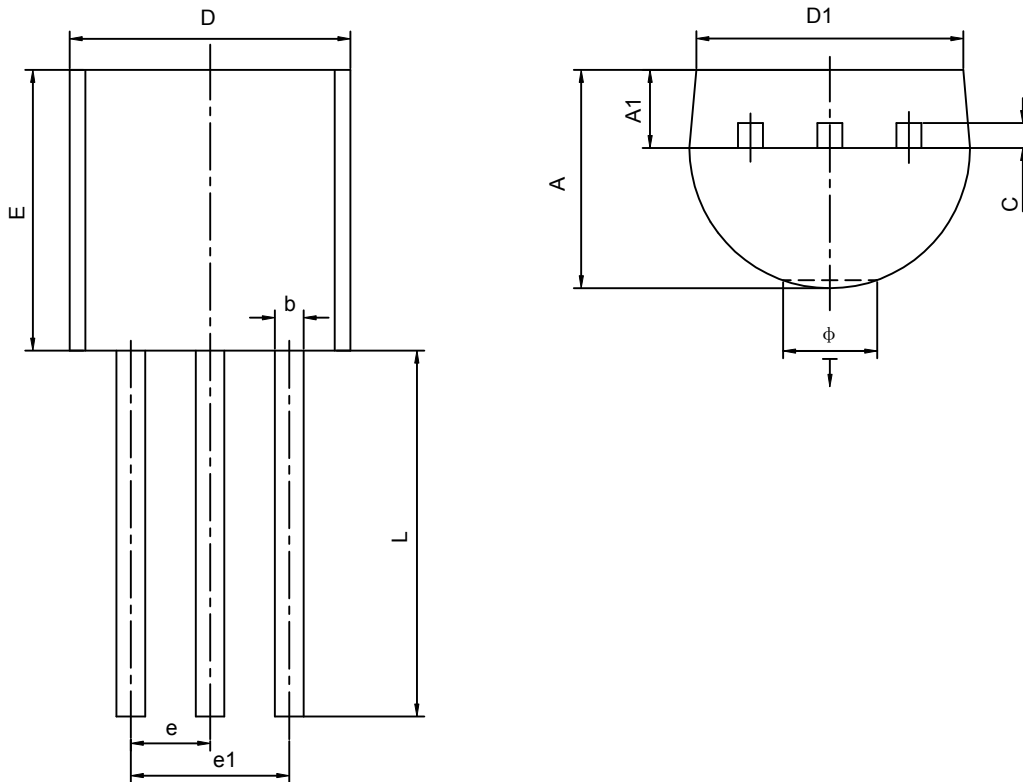
($V_i = -15V, I_o = 40mA, 0 < T_j < 125$, $C_1 = 0.33 \mu F, C_o = 0.1 \mu F$, unless otherwise specified)

Parameter	Symbol	Test conditions	MIN	TYP	MAX	UNIT
Output voltage	V_o	$V_{IN} = -15V, I_o = 40mA$	-8.64	-9.0	-9.36	V
Line Regulation	$V_o - V_{IN}$	$V_{IN} = -12.5 \sim -24V, I_o = 40mA$		27	200	mV
Load Regulation	$V_o - I_o$	$V_{IN} = -15V, I_o = 1 \sim 100mA$		12	90	mV
Quiescent Current	I_Q	$V_{IN} = -15V, I_o = 40mA$		3.5	6.0	mA
Ripple Rejection	RR	$V_{IN} = -12V \sim -22V, I_o = 40mA, e_{IN} = 1V_{P-P}, f = 150Hz$	37	64		dB
Output Noise Voltage	V_{NO}	$V_{IN} = -15V, BW = 10Hz \sim 100KH, I_o = 40mA$		210		μV

TYPICAL APPLICATION



TO-92 PACKAGE OUTLINE DIMENSIONS



Symbol	Dimensions In Millimeters		Dimensions In Inches	
	Min	Max	Min	Max
A	3.300	3.700	0.130	0.146
A1	1.100	1.400	0.043	0.055
b	0.380	0.550	0.015	0.022
c	0.360	0.510	0.014	0.020
D	4.400	4.700	0.173	0.185
D1	3.430		0.135	
E	4.300	4.700	0.169	0.185
e	1.270TYP		0.050TYP	
e1	2.440	2.640	0.096	0.104
L	14.100	14.500	0.555	0.571
Ö		1.600		0.063
↓	0.000	0.380	0.000	0.015