

# Monolithic crystal filter

## QF 1.4-U0200/05



### Application

- 6 pol filter
- i.f.- filter
- use in mobile and stationary transceivers

Limiting values		Unit	Value
Center frequency	$f_0$	MHz	1.4
Insertion loss		dB	$\leq 5.0$
Pass band at 4.0 dB		kHz	+0.5...2.5
Ripple in pass band	$f_0 +0.8...2$ kHz	dB	$\leq 3.0$
Stop band attenuation	$f_0$	dB	$> 10$
	$f_0 -0.7$ kHz; $f_0 +5$ kHz	dB	$\geq 45$
Alternate attenuation		dB	$> 45$ except spurious

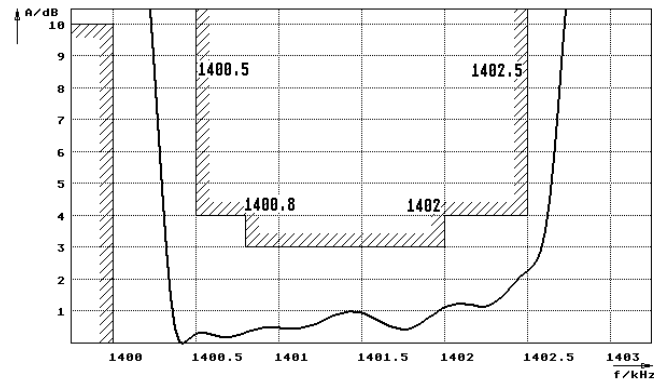
  

Terminating impedance Z			
R1    C1		Ohm/pF	1000    75
R2    C2		Ohm/pF	1000    75

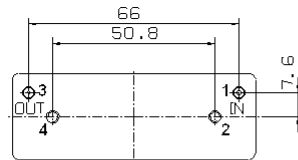
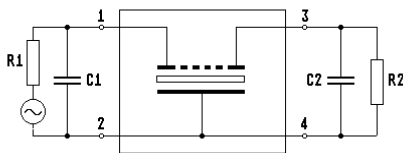
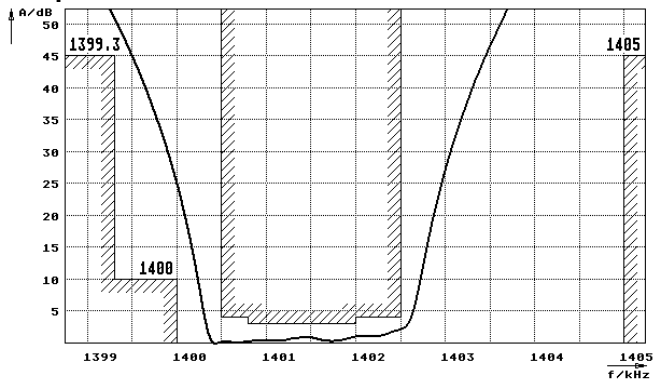
Operating temp. range ° C -10... +65

### Characteristics QF 1.4-U0200/05

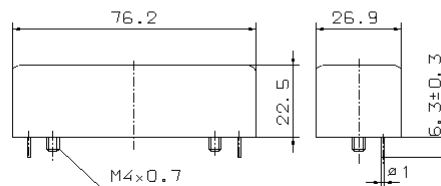
#### Pass band



#### Stop band



GM37



- Pin connections:
- 1 Input
  - 2 Ground-Input
  - 3 Output
  - 4 Ground-Output