

Crystal filter

QF 1.4-L0235/05



Application

- 10 pol filter
- i.f.- filter
- use in mobile and stationary transceivers

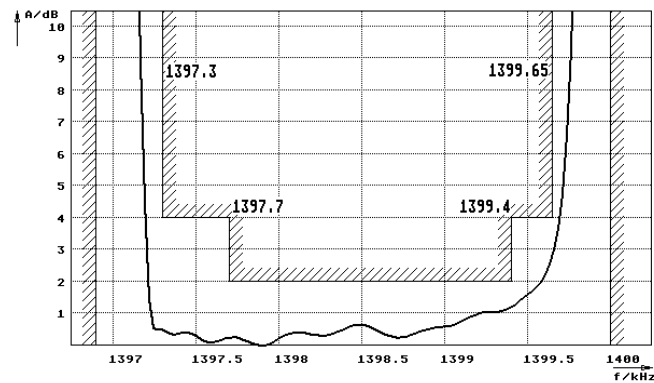
Limiting values		Unit	Value
Center frequency	f_0	MHz	1.4
Insertion loss		dB	≤ 4.0
Pass band at 4.0 dB		kHz	-2.7...-0.35
Ripple in pass band	$f_0 - 2.3 \dots - 0.6$ kHz	dB	≤ 2.0
Stop band attenuation	f_0	dB	≥ 20
	$f_0 - 3.1$ kHz	dB	> 35
	$f_0 + 0.15$ kHz	dB	> 40
	$f_0 - 3.4$ kHz; $f_0 + 0.4$ kHz	dB	> 60
Alternate attenuation		dB	> 60 except spurious

Terminating impedance Z			
R1 C1		Ohm/pF	1000 15
R2 C2		Ohm/pF	1000 15

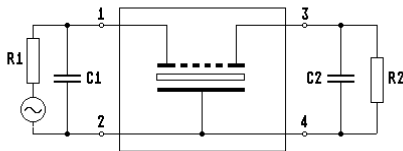
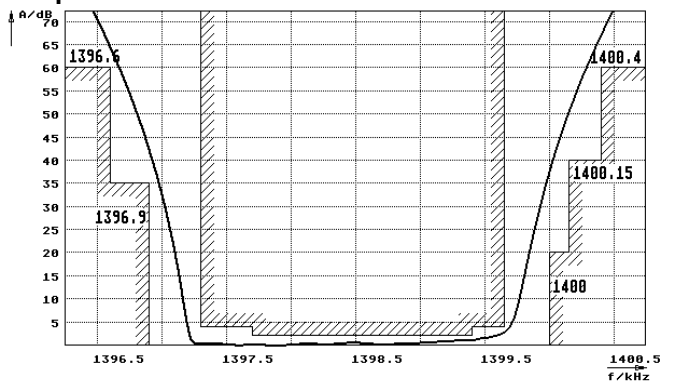
Operating temp. range		°C	-15... +55
-----------------------	--	----	------------

Characteristics QF 1.4-L0235/05

Pass band



Stop band



- Pin connections:
- 1 Input
 - 2 Ground-Input
 - 3 Output
 - 4 Ground-Output

