

**PLEASE CHECK WWW.MOLEX.COM FOR LATEST PART INFORMATION**

**Part Number:** [0022426101](#)  
**Status:** **Active**  
**Overview:** [kk](#)  
**Description:** 2.54mm (.100") KK® IDT Double Cantilever Contact, 10 Circuits, Tin (Sn), Feed-Through, 22 AWG Wire, Friction Ramp

**Documents:**

[3D Model](#) [Product Specification PS-7720-001 \(PDF\)](#)  
[Drawing \(PDF\)](#) [RoHS Certificate of Compliance \(PDF\)](#)

**Agency Certification**

CSA LR 19980  
 UL E29179

**General**

Product Family IDT and Solder Connectors  
 Series [7720](#)  
 Comments Double Cantilever contact  
 Crimp Quality Equipment Yes  
 Overview [kk](#)  
 Product Name KK®

**Physical**

Circuits (Loaded) 10  
 Color - Resin Natural  
 Durability (mating cycles max) 5  
 Flammability 94V-2  
 Gender Female  
 Glow-Wire Compliant No  
 Lock to Mating Part Yes  
 Material - Metal Phosphor Bronze  
 Material - Plating Mating Tin  
 Material - Plating Termination Tin  
 Material - Resin Nylon  
 Number of Rows 1  
 Packaging Type Bag  
 Panel Mount No  
 Pitch - Mating Interface (in) 0.100 In  
 Pitch - Mating Interface (mm) 2.54 mm  
 Polarized to Mating Part Yes  
 Temperature Range - Operating 0°C to +75°C  
 Termination Interface: Style IDT or Pierce  
 Wire Size AWG 22 Stranded

**Electrical**

Current - Maximum per Contact 4A  
 Voltage - Maximum 250V

**Material Info**

Old Part Number A-7720-WB10FP909B

**Reference - Drawing Numbers**

Packaging Specification PK-7720-001  
 Product Specification PS-7720-001  
 Sales Drawing SD-7720-001

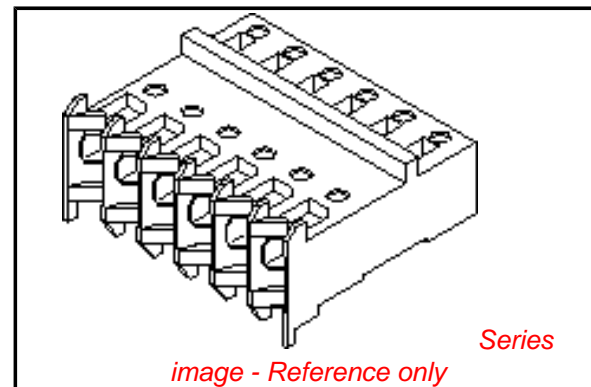


image - Reference only

**EU RoHS**

**ELV and RoHS Compliant**  
**REACH SVHC Contains SVHC: No**  
**Halogen-Free Status Not Reviewed**

**China RoHS**



**Need more information on product environmental compliance?**

Email [productcompliance@molex.com](mailto:productcompliance@molex.com)  
 For a multiple part number RoHS Certificate of Compliance, [click here](#)

Please visit the [Contact Us](#) section for any non-product compliance questions.

**Search Parts in this Series**

[7720Series](#)

**Application Tooling | FAQ**

*Tooling specifications and manuals are found by selecting the products below. Crimp Height Specifications are then contained in the Application Tooling Specification document.*

**Global**

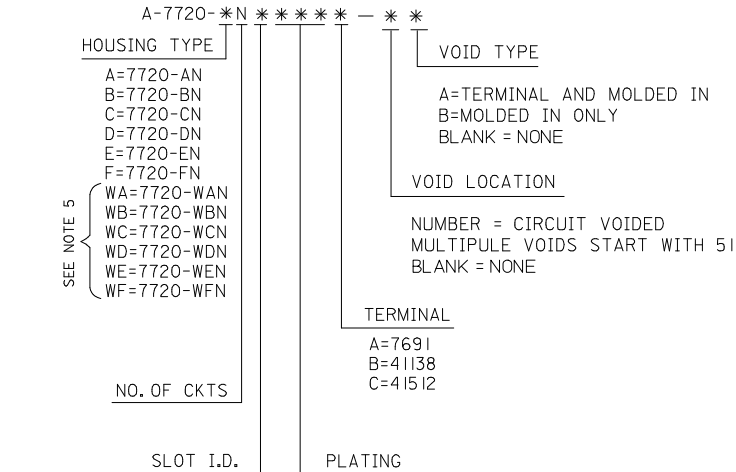
| Description   | Product #                  |
|---|----------------------------|
| Insertion Tool for 2.54mm (.100") Pitch KK® IDT Crimp Terminals | <a href="#">0638133504</a> |
| IDT - Manual Press - Bench-Top Terminator                       | <a href="#">0011200179</a> |
| IDT - Semi-automatic - Bench-Top Terminator                     | <a href="#">0011200412</a> |
| IDT - Semi-automatic - Bench-Top Terminator                     | <a href="#">0011200771</a> |

IDT - Semi-automatic 0623000100  
- Bench-Top  
Terminator  
Changehead for 0690080225  
7720 and 7720s  
Connector Range,  
Colour Bar In, Feed-  
To Only  
Arbor Press Fixture 0690200320  
for 7720 and  
7720s Insulation  
Displacement  
Housings, 2-28  
Circuit, 24-28 AWG  
Wire/ Ribbon Cable

This document was generated on 06/08/2010

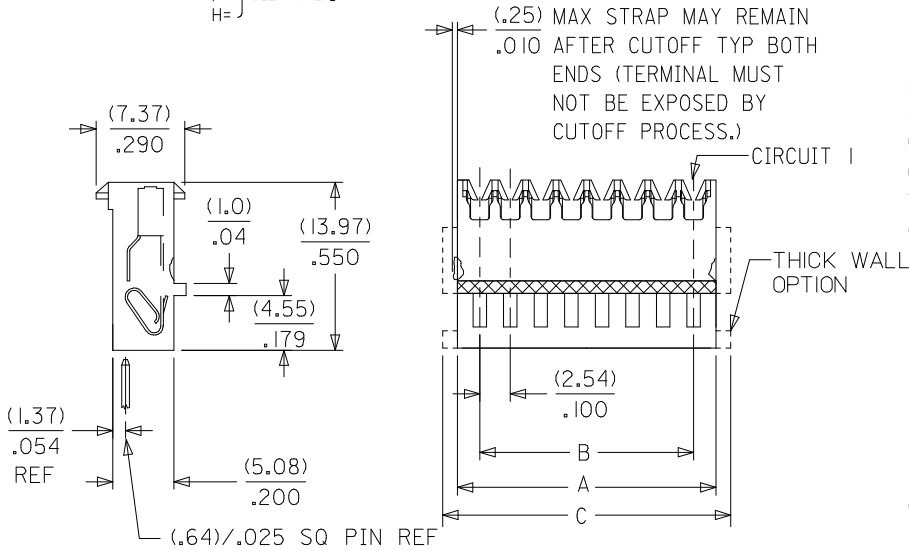
**PLEASE CHECK [WWW.MOLEX.COM](http://WWW.MOLEX.COM) FOR LATEST PART INFORMATION**

ENGINEERING NUMBERING SYSTEM  
SEE SHEET 17 FOR PARTS WITH VOIDS



NOTES

- MATERIAL: UNFILLED NYLON, UL94V-2, MOLDED MATERIAL (CLEAR)
- FINISH:
  - (102) OVERALL TIN: (0.00508)/(0.00200 MIN OVER (0.00254)/(0.00100 MIN COPPER.
  - (208) SELECT GOLD: (0.00038)/(0.00015 MIN, \* SELECT TIN: (0.00254)/(0.00100 MIN, OVERALL NICKEL UNDERPLATE: (0.00127)/(0.00050 MIN.
  - (228) SELECT GOLD: (0.00076)/(0.00030 MIN, \* SELECT TIN: (0.00254)/(0.00100 MIN, OVERALL NICKEL UNDERPLATE: (0.00127)/(0.00050 MIN.
  - (501) OVERALL GOLD: (0.00051)/(0.00020 MIN OVER (0.00076)/(0.00030 MIN NICKEL
  - (502) OVERALL GOLD: (0.00051)/(0.00020 MIN OVER (0.00127)/(0.00050 MIN NICKEL.
  - (503) OVERALL GOLD: (0.00076)/(0.00030 MIN OVER (0.00127)/(0.00050 MIN NICKEL.
  - (P909) OVERALL TIN: (0.00254)/(0.00100 MIN. \*THE PRIMARY SHIPPING CARTON WILL BE LABELED COMPLIANT TO RoHS DIRECTIVE 2002/95/EC AND ELV ANNEX II OF DIRECTIVE 2000/53/EC\*. CARTONS WITHOUT THIS LABEL MAY CONTAIN PRODUCT WITH TIN/LEAD PLATINGS.
- PRODUCT SPECIFICATION: PS-7720-001
- PACKAGING: BULK PK-7720-001 SEE CHART
- THESE HOUSINGS ARE FOR USE WITH SINGLE 22 AWG WIRE TERMINATION ONLY
- COLOR STRIPE TO RUN LENGTH OF RIB AS SHOWN (SEE CHART FOR COLOR)
- SEE APPLICATION SPEC SMES-7720-0002 FOR ADDITIONAL INFORMATION.
- WIRE SPECIFICATIONS: SEE SMES-7720-0002 (INSUL. DIA (1.52)/(0.060 MAX)
  - SLOT SIZE A FOR USE WITH: 26 AWG SOLID, STRANDED TINNED
  - SLOT SIZE H FOR USE WITH: 28 AWG SOLID, STRANDED TINNED, AND STRANDED TOPCOAT
  - SLOT SIZE F FOR USE WITH: 24 AWG SOLID, STRANDED TINNED, AND STRANDED TOPCOAT
  - SLOT SIZE E FOR USE WITH: 26 AWG STRANDED TOPCOAT
  - SLOT SIZE G FOR USE WITH: 22 AWG STRANDED TINNED
- THIS PART CONFORMS TO CLASS B REQUIREMENTS OF COSMETIC SPECIFICATION PS-45499-002.



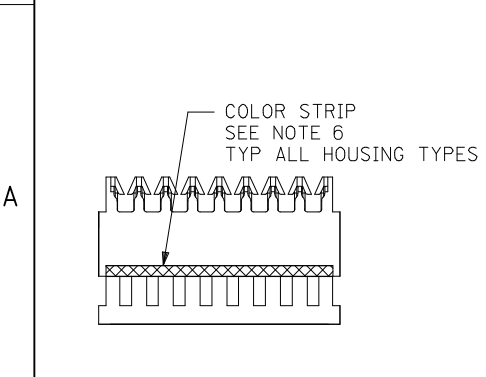
| NO OF CKTS | DIM A            | DIM B            | DIM C            |
|------------|------------------|------------------|------------------|
| 2          | (5.44)<br>.214   | (2.54)<br>.100   | (7.59)<br>.299   |
| 3          | (7.98)<br>.314   | (5.08)<br>.200   | (10.13)<br>.399  |
| 4          | (10.52)<br>.414  | (7.62)<br>.300   | (12.67)<br>.499  |
| 5          | (13.06)<br>.514  | (10.16)<br>.400  | (15.21)<br>.599  |
| 6          | (15.60)<br>.614  | (12.70)<br>.500  | (17.75)<br>.699  |
| 7          | (18.14)<br>.714  | (15.24)<br>.600  | (20.29)<br>.799  |
| 8          | (20.68)<br>.814  | (17.78)<br>.700  | (22.23)<br>.899  |
| 9          | (23.22)<br>.914  | (20.30)<br>.800  | (25.37)<br>.999  |
| 10         | (25.76)<br>1.014 | (22.86)<br>.900  | (27.91)<br>1.099 |
| 11         | (28.30)<br>1.114 | (25.40)<br>1.000 | (30.45)<br>1.199 |
| 12         | (30.84)<br>1.214 | (27.94)<br>1.100 | (32.99)<br>1.299 |
| 13         | (33.38)<br>1.314 | (30.48)<br>1.200 | (35.53)<br>1.399 |
| 14         | (35.92)<br>1.414 | (33.02)<br>1.300 | (38.07)<br>1.499 |
| 15         | (38.46)<br>1.514 | (35.56)<br>1.400 | (40.61)<br>1.599 |
| 16         | (41.00)<br>1.614 | (38.10)<br>1.500 | (43.15)<br>1.699 |
| 17         | (43.54)<br>1.714 | (40.64)<br>1.600 | (45.69)<br>1.799 |
| 18         | (46.08)<br>1.814 | (43.18)<br>1.700 | (48.23)<br>1.899 |
| 19         | (48.62)<br>1.914 | (45.72)<br>1.800 | (50.77)<br>1.999 |
| 20         | (51.16)<br>2.014 | (48.26)<br>1.900 | (53.31)<br>2.099 |
| 21         | (53.70)<br>2.114 | (50.80)<br>2.000 | (55.85)<br>2.199 |
| 22         | (56.24)<br>2.214 | (53.34)<br>2.100 | (58.39)<br>2.299 |
| 23         | (58.78)<br>2.314 | (55.88)<br>2.200 | (60.93)<br>2.399 |
| 24         | (61.32)<br>2.414 | (58.42)<br>2.300 | (63.47)<br>2.499 |
| 25         | (63.86)<br>2.514 | (60.96)<br>2.400 | (66.01)<br>2.599 |
| 26         | (66.40)<br>2.614 | (63.50)<br>2.500 | (68.55)<br>2.699 |
| 27         | (68.94)<br>2.714 | (66.04)<br>2.600 | (71.09)<br>2.799 |
| 28         | (71.48)<br>2.814 | (68.58)<br>2.700 | (73.63)<br>2.899 |

|                         |                 |
|-------------------------|-----------------|
| CORRECT HSG. NO.'S      | QUALITY SYMBOLS |
| EC NO: UCP2009-2291     | ▼=0             |
| DRWN:MKIPPER 2009/04/16 | ▽=0             |
| CHKD:SSOUSEK 2009/04/17 |                 |
| APPR:FSM:TH 2009/04/17  |                 |
| DESCRIPTION             |                 |
| REV                     |                 |
| BA                      |                 |

| GENERAL TOLERANCES (UNLESS SPECIFIED)                |       |       |
|--|-------|-------|
|  | mm    | INCH  |
| 4 PLACES   | ± --- | ± --- |
| 3 PLACES   | ± --- | ± --- |
| 2 PLACES   | ± --- | ± --- |
| 1 PLACE  | ± --- | ± --- |
| ANGULAR ±1/2°  |       |       |
| DRAFT WHERE APPLICABLE MUST REMAIN WITHIN DIMENSIONS |       |       |

| DIMENSION STYLE |            |
|-----------------|------------|
| MM/IN           |            |
| DRAWN BY        | DATE       |
| SAMIEC          | 2004/04/13 |
| CHECKED BY      | DATE       |
| SAMIEC          | 2004/04/13 |
| APPROVED BY     | DATE       |
| MARGULIS        | 2004/04/13 |
| MATERIAL NO.    |            |
| SEE CHART       |            |

|                               |              |                        |
|-------------------------------|--------------|------------------------|
| SCALE                         | DESIGN UNITS | THIRD ANGLE PROJECTION |
| ---                           | INCH         |                        |
| TITLE                         |              |                        |
| KK 100 IDT CONNECTOR ASSEMBLY |              |                        |
| MOLEX MOLEX INCORPORATED      |              |                        |
| DOCUMENT NO.                  | SHEET NO.    |                        |
| SD-7720-001                   | 1 OF *       |                        |



**FACTORY I.D.**  
 EC NO: UCP2009-2029  
 DRWN:MKIPPER 2009/02/25  
 CHKD:SSOUSEK 2009/02/25  
 APPR:FSMITH 2009/02/26  
**AZ7**

|                 |             |
|-----------------|-------------|
| QUALITY SYMBOLS | = 0         |
|                 | = 0         |
| REV             | DESCRIPTION |

|  |       |       |
|--|-------|-------|
| GENERAL TOLERANCES (UNLESS SPECIFIED)                |       |       |
|  | mm    | INCH  |
| 4 PLACES   | ± --- | ± --- |
| 3 PLACES   | ± --- | ± --- |
| 2 PLACES   | ± --- | ± --- |
| 1 PLACE  | ± --- | ± --- |
| ANGULAR ±1/2°  |       |       |
| DRAFT WHERE APPLICABLE MUST REMAIN WITHIN DIMENSIONS |       |       |

|                 |            |
|-----------------|------------|
| DIMENSION STYLE |            |
| MM/IN           |            |
| DRAWN BY        | DATE       |
| SAMIEC          | 2004/04/13 |
| CHECKED BY      | DATE       |
| SAMIEC          | 2004/04/13 |
| APPROVED BY     | DATE       |
| MARGULIS        | 2004/04/13 |
| MATERIAL NO.    |            |
| SEE CHART       |            |

|   |              |                        |
|---|--------------|------------------------|
| SCALE   | DESIGN UNITS | THIRD ANGLE PROJECTION |
| ---   | INCH         |                        |
| TITLE   |              |                        |
| KK 100 IDT CONNECTOR ASSEMBLY   |              |                        |
| <b>MOLEX INCORPORATED</b>   |              |                        |
| DOCUMENT NO.  | SHEET NO.    |                        |
| SD-7720-001   | 2 OF *       |                        |
| THIS DRAWING CONTAINS INFORMATION THAT IS PROPRIETARY TO MOLEX INCORPORATED AND SHOULD NOT BE USED WITHOUT WRITTEN PERMISSION |              |                        |

| A-7720-ANA102 |                 | A-7720-BNA102 |                 | A-7720-CNA102 |                 | A-7720-DNA102 |                 | A-7720-ENA102 |                 | A-7720-FNA102 |                 |
|---------------|-----------------|---------------|-----------------|---------------|-----------------|---------------|-----------------|---------------|-----------------|---------------|-----------------|
| HOUSING       | 7720-AN         | HOUSING       | 7720-BN         | HOUSING       | 7720-CN         | HOUSING       | 7720-DN         | HOUSING       | 7720-EN         | HOUSING       | 7720-FN         |
| TERM. NO      | 7691-A102       | TERM. NO      | 7691-A102       | TERM. NO      | 7691-A102       | TERM. NO      | 7691-A102       | TERM. NO      | 7691-A102       | TERM. NO      | 7691-A102       |
| PLATING:      | 102             | PLATING:      | 102             | PLATING:      | 102             | PLATING:      | 102             | PLATING:      | 102             | PLATING:      | 102             |
| COLOR         | BROWN           | COLOR         | BROWN           | COLOR         | BROWN           | COLOR         | BROWN           | COLOR         | BROWN           | COLOR         | BROWN           |
| MATL NO       | ENG NO:         | MATL NO       | ENG NO:         | MATL NO       | ENG NO:         | MATL NO       | ENG NO:         | MATL NO       | ENG NO:         | MATL NO       | ENG NO:         |
| 22-26-7021    | A-7720-A02A102A | 22-26-8021    | A-7720-B02A102A | 22-26-9021    | A-7720-C02A102A | 22-41-3021    | A-7720-D02A102A | 22-41-4021    | A-7720-E02A102A | 22-41-5021    | A-7720-F02A102A |
| 22-26-7031    | A-7720-A03A102A | 22-26-8031    | A-7720-B03A102A | 22-26-9031    | A-7720-C03A102A | 22-41-3031    | A-7720-D03A102A | 22-41-4031    | A-7720-E03A102A | 22-41-5031    | A-7720-F03A102A |
| 22-26-7041    | A-7720-A04A102A | 22-26-8041    | A-7720-B04A102A | 22-26-9041    | A-7720-C04A102A | 22-41-3041    | A-7720-D04A102A | 22-41-4041    | A-7720-E04A102A | 22-41-5041    | A-7720-F04A102A |
| 22-26-7051    | A-7720-A05A102A | 22-26-8051    | A-7720-B05A102A | 22-26-9051    | A-7720-C05A102A | 22-41-3051    | A-7720-D05A102A | 22-41-4051    | A-7720-E05A102A | 22-41-5051    | A-7720-F05A102A |
| 22-26-7061    | A-7720-A06A102A | 22-26-8061    | A-7720-B06A102A | 22-26-9061    | A-7720-C06A102A | 22-41-3061    | A-7720-D06A102A | 22-41-4061    | A-7720-E06A102A | 22-41-5061    | A-7720-F06A102A |
| 22-26-7071    | A-7720-A07A102A | 22-26-8071    | A-7720-B07A102A | 22-26-9071    | A-7720-C07A102A | 22-41-3071    | A-7720-D07A102A | 22-41-4071    | A-7720-E07A102A | 22-41-5071    | A-7720-F07A102A |
| 22-26-7081    | A-7720-A08A102A | 22-26-8081    | A-7720-B08A102A | 22-26-9081    | A-7720-C08A102A | 22-41-3081    | A-7720-D08A102A | 22-41-4081    | A-7720-E08A102A | 22-41-5081    | A-7720-F08A102A |
| 22-26-7091    | A-7720-A09A102A | 22-26-8091    | A-7720-B09A102A | 22-26-9091    | A-7720-C09A102A | 22-41-3091    | A-7720-D09A102A | 22-41-4091    | A-7720-E09A102A | 22-41-5091    | A-7720-F09A102A |
| 22-26-7101    | A-7720-A10A102A | 22-26-8101    | A-7720-B10A102A | 22-26-9101    | A-7720-C10A102A | 22-41-3101    | A-7720-D10A102A | 22-41-4101    | A-7720-E10A102A | 22-41-5101    | A-7720-F10A102A |
| 22-26-7111    | A-7720-A11A102A | 22-26-8111    | A-7720-B11A102A | 22-26-9111    | A-7720-C11A102A | 22-41-3111    | A-7720-D11A102A | 22-41-4111    | A-7720-E11A102A | 22-41-5111    | A-7720-F11A102A |
| 22-26-7121    | A-7720-A12A102A | 22-26-8121    | A-7720-B12A102A | 22-26-9121    | A-7720-C12A102A | 22-41-3121    | A-7720-D12A102A | 22-41-4121    | A-7720-E12A102A | 22-41-5121    | A-7720-F12A102A |
| 22-26-7131    | A-7720-A13A102A | 22-26-8131    | A-7720-B13A102A | 22-26-9131    | A-7720-C13A102A | 22-41-3131    | A-7720-D13A102A | 22-41-4131    | A-7720-E13A102A | 22-41-5131    | A-7720-F13A102A |
| 22-26-7141    | A-7720-A14A102A | 22-26-8141    | A-7720-B14A102A | 22-26-9141    | A-7720-C14A102A | 22-41-3141    | A-7720-D14A102A | 22-41-4141    | A-7720-E14A102A | 22-41-5141    | A-7720-F14A102A |
| 22-26-7151    | A-7720-A15A102A | 22-26-8151    | A-7720-B15A102A | 22-26-9151    | A-7720-C15A102A | 22-41-3151    | A-7720-D15A102A | 22-41-4151    | A-7720-E15A102A | 22-41-5151    | A-7720-F15A102A |
| 22-26-7161    | A-7720-A16A102A | 22-26-8161    | A-7720-B16A102A | 22-26-9161    | A-7720-C16A102A | 22-41-3161    | A-7720-D16A102A | 22-41-4161    | A-7720-E16A102A | 22-41-5161    | A-7720-F16A102A |
| 22-26-7171    | A-7720-A17A102A | 22-26-8171    | A-7720-B17A102A | 22-26-9171    | A-7720-C17A102A | 22-41-3171    | A-7720-D17A102A | 22-41-4171    | A-7720-E17A102A | 22-41-5171    | A-7720-F17A102A |
| 22-26-7181    | A-7720-A18A102A | 22-26-8181    | A-7720-B18A102A | 22-26-9181    | A-7720-C18A102A | 22-41-3181    | A-7720-D18A102A | 22-41-4181    | A-7720-E18A102A | 22-41-5181    | A-7720-F18A102A |
| 22-26-7191    | A-7720-A19A102A | 22-26-8191    | A-7720-B19A102A | 22-26-9191    | A-7720-C19A102A | 22-41-3191    | A-7720-D19A102A | 22-41-4191    | A-7720-E19A102A | 22-41-5191    | A-7720-F19A102A |
| 22-26-7201    | A-7720-A20A102A | 22-26-8201    | A-7720-B20A102A | 22-26-9201    | A-7720-C20A102A | 22-41-3201    | A-7720-D20A102A | 22-41-4201    | A-7720-E20A102A | 22-41-5201    | A-7720-F20A102A |
| 22-26-7211    | A-7720-A21A102A | 22-26-8211    | A-7720-B21A102A | 22-26-9211    | A-7720-C21A102A | 22-41-3211    | A-7720-D21A102A | 22-41-4211    | A-7720-E21A102A | 22-41-5211    | A-7720-F21A102A |
| 22-26-7221    | A-7720-A22A102A | 22-26-8221    | A-7720-B22A102A | 22-26-9221    | A-7720-C22A102A | 22-41-3221    | A-7720-D22A102A | 22-41-4221    | A-7720-E22A102A | 22-41-5221    | A-7720-F22A102A |
| 22-26-7231    | A-7720-A23A102A | 22-26-8231    | A-7720-B23A102A | 22-26-9231    | A-7720-C23A102A | 22-41-3231    | A-7720-D23A102A | 22-41-4231    | A-7720-E23A102A | 22-41-5231    | A-7720-F23A102A |
| 22-26-7241    | A-7720-A24A102A | 22-26-8241    | A-7720-B24A102A | 22-26-9241    | A-7720-C24A102A | 22-41-3241    | A-7720-D24A102A | 22-41-4241    | A-7720-E24A102A | 22-41-5241    | A-7720-F24A102A |
| 22-26-7251    | A-7720-A25A102A | 22-26-8251    | A-7720-B25A102A | 22-26-9251    | A-7720-C25A102A | 22-41-3251    | A-7720-D25A102A | 22-41-4251    | A-7720-E25A102A | 22-41-5251    | A-7720-F25A102A |
| 22-26-7261    | A-7720-A26A102A | 22-26-8261    | A-7720-B26A102A | 22-26-9261    | A-7720-C26A102A | 22-41-3261    | A-7720-D26A102A | 22-41-4261    | A-7720-E26A102A | 22-41-5261    | A-7720-F26A102A |
| 22-26-7271    | A-7720-A27A102A | 22-26-8271    | A-7720-B27A102A | 22-26-9271    | A-7720-C27A102A | 22-41-3271    | A-7720-D27A102A | 22-41-4271    | A-7720-E27A102A | 22-41-5271    | A-7720-F27A102A |
| 22-26-7281    | A-7720-A28A102A | 22-26-8281    | A-7720-B28A102A | 22-26-9281    | A-7720-C28A102A | 22-41-3281    | A-7720-D28A102A | 22-41-4281    | A-7720-E28A102A | 22-41-5281    | A-7720-F28A102A |

|   |  |   |                                      |
|---|--|---|--------------------------------------|
| <b>REVISION:</b><br><b>BA</b>                 | <b>ECR/ECN INFORMATION:</b>                    | <b>TITLE:</b><br><b>KK 100 IDT CONNECTOR ASSEMBLY</b> | <b>SHEET No.</b><br><b>3</b>         |
|   | EC No.: UCP2009-2291<br>DATE: 4/17/2009        |   |                                      |
| <b>DOCUMENT NUMBER:</b><br><b>SD-7720-001</b> | <b>CREATED / REVISED BY:</b><br><b>MKIPPER</b> | <b>CHECKED BY:</b><br><b>SSOUSEK</b>                  | <b>APPROVED BY:</b><br><b>FSMITH</b> |

| A-7720-ANHP909B |                  | A-7720-BNHP909B |                  | A-7720-CNHP909B |                  | A-7720-DNHP909B |                  | A-7720-ENHP909B |                  | A-7720-FNHP909B |                  |
|-----------------|------------------|-----------------|------------------|-----------------|------------------|-----------------|------------------|-----------------|------------------|-----------------|------------------|
| HOUSING         | 7720-AN          | HOUSING         | 7720-BN          | HOUSING         | 7720-CN          | HOUSING         | 7720-DN          | HOUSING         | 7720-EN          | HOUSING         | 7720-FN          |
| TERM. NO        | 41138-HP909      | TERM. NO        | 41138-HP909      | TERM. NO        | 41138-HP909      | TERM. NO        | 41138-HP909      | TERM. NO        | 41138-HP909      | TERM. NO        | 41138-HP909      |
| PLATING:        | P909             | PLATING:        | P909             | PLATING:        | P909             | PLATING:        | P909             | PLATING:        | P909             | PLATING:        | P909             |
| COLOR           | GREEN            | COLOR           | GREEN            | COLOR           | GREEN            | COLOR           | GREEN            | COLOR           | GREEN            | COLOR           | GREEN            |
| MATL NO         | ENG NO:          | MATL NO         | ENG NO:          | MATL NO         | ENG NO:          | MATL NO         | ENG NO:          | MATL NO         | ENG NO:          | MATL NO         | ENG NO:          |
| 22-26-7022      | A-7720-A02HP909B | 22-26-8022      | A-7720-B02HP909B | 22-26-9022      | A-7720-C02HP909B | 22-41-3022      | A-7720-D02HP909B | 22-41-4022      | A-7720-E02HP909B | 22-41-5022      | A-7720-F02HP909B |
| 22-26-7032      | A-7720-A03HP909B | 22-26-8032      | A-7720-B03HP909B | 22-26-9032      | A-7720-C03HP909B | 22-41-3032      | A-7720-D03HP909B | 22-41-4032      | A-7720-E03HP909B | 22-41-5032      | A-7720-F03HP909B |
| 22-26-7042      | A-7720-A04HP909B | 22-26-8042      | A-7720-B04HP909B | 22-26-9042      | A-7720-C04HP909B | 22-41-3042      | A-7720-D04HP909B | 22-41-4042      | A-7720-E04HP909B | 22-41-5042      | A-7720-F04HP909B |
| 22-26-7052      | A-7720-A05HP909B | 22-26-8052      | A-7720-B05HP909B | 22-26-9052      | A-7720-C05HP909B | 22-41-3052      | A-7720-D05HP909B | 22-41-4052      | A-7720-E05HP909B | 22-41-5052      | A-7720-F05HP909B |
| 22-26-7062      | A-7720-A06HP909B | 22-26-8062      | A-7720-B06HP909B | 22-26-9062      | A-7720-C06HP909B | 22-41-3062      | A-7720-D06HP909B | 22-41-4062      | A-7720-E06HP909B | 22-41-5062      | A-7720-F06HP909B |
| 22-26-7072      | A-7720-A07HP909B | 22-26-8072      | A-7720-B07HP909B | 22-26-9072      | A-7720-C07HP909B | 22-41-3072      | A-7720-D07HP909B | 22-41-4072      | A-7720-E07HP909B | 22-41-5072      | A-7720-F07HP909B |
| 22-26-7082      | A-7720-A08HP909B | 22-26-8082      | A-7720-B08HP909B | 22-26-9082      | A-7720-C08HP909B | 22-41-3082      | A-7720-D08HP909B | 22-41-4082      | A-7720-E08HP909B | 22-41-5082      | A-7720-F08HP909B |
| 22-26-7092      | A-7720-A09HP909B | 22-26-8092      | A-7720-B09HP909B | 22-26-9092      | A-7720-C09HP909B | 22-41-3092      | A-7720-D09HP909B | 22-41-4092      | A-7720-E09HP909B | 22-41-5092      | A-7720-F09HP909B |
| 22-26-7102      | A-7720-A10HP909B | 22-26-8102      | A-7720-B10HP909B | 22-26-9102      | A-7720-C10HP909B | 22-41-3102      | A-7720-D10HP909B | 22-41-4102      | A-7720-E10HP909B | 22-41-5102      | A-7720-F10HP909B |
| 22-26-7112      | A-7720-A11HP909B | 22-26-8112      | A-7720-B11HP909B | 22-26-9112      | A-7720-C11HP909B | 22-41-3112      | A-7720-D11HP909B | 22-41-4112      | A-7720-E11HP909B | 22-41-5112      | A-7720-F11HP909B |
| 22-26-7122      | A-7720-A12HP909B | 22-26-8122      | A-7720-B12HP909B | 22-26-9122      | A-7720-C12HP909B | 22-41-3122      | A-7720-D12HP909B | 22-41-4122      | A-7720-E12HP909B | 22-41-5122      | A-7720-F12HP909B |
| 22-26-7132      | A-7720-A13HP909B | 22-26-8132      | A-7720-B13HP909B | 22-26-9132      | A-7720-C13HP909B | 22-41-3132      | A-7720-D13HP909B | 22-41-4132      | A-7720-E13HP909B | 22-41-5132      | A-7720-F13HP909B |
| 22-26-7142      | A-7720-A14HP909B | 22-26-8142      | A-7720-B14HP909B | 22-26-9142      | A-7720-C14HP909B | 22-41-3142      | A-7720-D14HP909B | 22-41-4142      | A-7720-E14HP909B | 22-41-5142      | A-7720-F14HP909B |
| 22-26-7152      | A-7720-A15HP909B | 22-26-8152      | A-7720-B15HP909B | 22-26-9152      | A-7720-C15HP909B | 22-41-3152      | A-7720-D15HP909B | 22-41-4152      | A-7720-E15HP909B | 22-41-5152      | A-7720-F15HP909B |
| 22-26-7162      | A-7720-A16HP909B | 22-26-8162      | A-7720-B16HP909B | 22-26-9162      | A-7720-C16HP909B | 22-41-3162      | A-7720-D16HP909B | 22-41-4162      | A-7720-E16HP909B | 22-41-5162      | A-7720-F16HP909B |
| 22-26-7172      | A-7720-A17HP909B | 22-26-8172      | A-7720-B17HP909B | 22-26-9172      | A-7720-C17HP909B | 22-41-3172      | A-7720-D17HP909B | 22-41-4172      | A-7720-E17HP909B | 22-41-5172      | A-7720-F17HP909B |
| 22-26-7182      | A-7720-A18HP909B | 22-26-8182      | A-7720-B18HP909B | 22-26-9182      | A-7720-C18HP909B | 22-41-3182      | A-7720-D18HP909B | 22-41-4182      | A-7720-E18HP909B | 22-41-5182      | A-7720-F18HP909B |
| 22-26-7192      | A-7720-A19HP909B | 22-26-8192      | A-7720-B19HP909B | 22-26-9192      | A-7720-C19HP909B | 22-41-3192      | A-7720-D19HP909B | 22-41-4192      | A-7720-E19HP909B | 22-41-5192      | A-7720-F19HP909B |
| 22-26-7202      | A-7720-A20HP909B | 22-26-8202      | A-7720-B20HP909B | 22-26-9202      | A-7720-C20HP909B | 22-41-3202      | A-7720-D20HP909B | 22-41-4202      | A-7720-E20HP909B | 22-41-5202      | A-7720-F20HP909B |
| 22-26-7212      | A-7720-A21HP909B | 22-26-8212      | A-7720-B21HP909B | 22-26-9212      | A-7720-C21HP909B | 22-41-3212      | A-7720-D21HP909B | 22-41-4212      | A-7720-E21HP909B | 22-41-5212      | A-7720-F21HP909B |
| 22-26-7222      | A-7720-A22HP909B | 22-26-8222      | A-7720-B22HP909B | 22-26-9222      | A-7720-C22HP909B | 22-41-3222      | A-7720-D22HP909B | 22-41-4222      | A-7720-E22HP909B | 22-41-5222      | A-7720-F22HP909B |
| 22-26-7232      | A-7720-A23HP909B | 22-26-8232      | A-7720-B23HP909B | 22-26-9232      | A-7720-C23HP909B | 22-41-3232      | A-7720-D23HP909B | 22-41-4232      | A-7720-E23HP909B | 22-41-5232      | A-7720-F23HP909B |
| 22-26-7242      | A-7720-A24HP909B | 22-26-8242      | A-7720-B24HP909B | 22-26-9242      | A-7720-C24HP909B | 22-41-3242      | A-7720-D24HP909B | 22-41-4242      | A-7720-E24HP909B | 22-41-5242      | A-7720-F24HP909B |
| 22-26-7252      | A-7720-A25HP909B | 22-26-8252      | A-7720-B25HP909B | 22-26-9252      | A-7720-C25HP909B | 22-41-3252      | A-7720-D25HP909B | 22-41-4252      | A-7720-E25HP909B | 22-41-5252      | A-7720-F25HP909B |
| 22-26-7262      | A-7720-A26HP909B | 22-26-8262      | A-7720-B26HP909B | 22-26-9262      | A-7720-C26HP909B | 22-41-3262      | A-7720-D26HP909B | 22-41-4262      | A-7720-E26HP909B | 22-41-5262      | A-7720-F26HP909B |
| 22-26-7272      | A-7720-A27HP909B | 22-26-8272      | A-7720-B27HP909B | 22-26-9272      | A-7720-C27HP909B | 22-41-3272      | A-7720-D27HP909B | 22-41-4272      | A-7720-E27HP909B | 22-41-5272      | A-7720-F27HP909B |
| 22-26-7282      | A-7720-A28HP909B | 22-26-8282      | A-7720-B28HP909B | 22-26-9282      | A-7720-C28HP909B | 22-41-3282      | A-7720-D28HP909B | 22-41-4282      | A-7720-E28HP909B | 22-41-5282      | A-7720-F28HP909B |

|  |  |  |  |  |  |  |  |  |  |  |  |
|--|--|--|--|--|--|--|--|--|--|--|--|
| <p>REVISION: <b>BA</b></p> <p>ECR/ECN INFORMATION: UCP2009-2291</p> <p>DATE: 4/17/2009</p> |  |  |  |  |  |  |  |  |  |  |  |
| <p>TITLE: <b>KK 100 IDT CONNECTOR ASSEMBLY</b></p>   |  |  |  |  |  |  |  |  |  |  |  |
| <p>SHEET No. <b>4</b></p>  |  |  |  |  |  |  |  |  |  |  |  |

|                                     |  |  |  |                                      |  |  |  |                            |  |  |  |                            |  |  |  |
|-------------------------------------|--|--|--|--------------------------------------|--|--|--|----------------------------|--|--|--|----------------------------|--|--|--|
| DOCUMENT NUMBER: <b>SD-7720-001</b> |  |  |  | CREATED / REVISED BY: <b>MKIPPER</b> |  |  |  | CHECKED BY: <b>SSOUSEK</b> |  |  |  | APPROVED BY: <b>FSMITH</b> |  |  |  |
|-------------------------------------|--|--|--|--------------------------------------|--|--|--|----------------------------|--|--|--|----------------------------|--|--|--|

| A-7720-ANFP909B |                  | A-7720-BNFP909B |                  | A-7720-CNFP909B |                  | A-7720-DNFP909B |                  | A-7720-ENFP909B |                  | A-7720-FNFP909B |                  |
|-----------------|------------------|-----------------|------------------|-----------------|------------------|-----------------|------------------|-----------------|------------------|-----------------|------------------|
| HOUSING         | 7720-AN          | HOUSING         | 7720-BN          | HOUSING         | 7720-CN          | HOUSING         | 7720-DN          | HOUSING         | 7720-EN          | HOUSING         | 7720-FN          |
| TERM. NO        | 41138-FP909      | TERM. NO        | 41138-FP909      | TERM. NO        | 41138-FP909      | TERM. NO        | 41138-FP909      | TERM. NO        | 41138-FP909      | TERM. NO        | 41138-FP909      |
| PLATING:        | P909             | PLATING:        | P909             | PLATING:        | P909             | PLATING:        | P909             | PLATING:        | P909             | PLATING:        | P909             |
| COLOR           | BLACK            | COLOR           | BLACK            | COLOR           | BLACK            | COLOR           | BLACK            | COLOR           | BLACK            | COLOR           | BLACK            |
| MATL NO         | ENG NO:          | MATL NO         | ENG NO:          | MATL NO         | ENG NO:          | MATL NO         | ENG NO:          | MATL NO         | ENG NO:          | MATL NO         | ENG NO:          |
| 22-42-3020      | A-7720-A02FP909B | 22-42-3021      | A-7720-B02FP909B | 22-42-3022      | A-7720-C02FP909B | 22-42-3023      | A-7720-D02FP909B | 22-42-3024      | A-7720-E02FP909B | 22-42-3025      | A-7720-F02FP909B |
| 22-42-3030      | A-7720-A03FP909B | 22-42-3031      | A-7720-B03FP909B | 22-42-3032      | A-7720-C03FP909B | 22-42-3033      | A-7720-D03FP909B | 22-42-3034      | A-7720-E03FP909B | 22-42-3035      | A-7720-F03FP909B |
| 22-42-3040      | A-7720-A04FP909B | 22-42-3041      | A-7720-B04FP909B | 22-42-3042      | A-7720-C04FP909B | 22-42-3043      | A-7720-D04FP909B | 22-42-3044      | A-7720-E04FP909B | 22-42-3045      | A-7720-F04FP909B |
| 22-42-3050      | A-7720-A05FP909B | 22-42-3051      | A-7720-B05FP909B | 22-42-3052      | A-7720-C05FP909B | 22-42-3053      | A-7720-D05FP909B | 22-42-3054      | A-7720-E05FP909B | 22-42-3055      | A-7720-F05FP909B |
| 22-42-3060      | A-7720-A06FP909B | 22-42-3061      | A-7720-B06FP909B | 22-42-3062      | A-7720-C06FP909B | 22-42-3063      | A-7720-D06FP909B | 22-42-3064      | A-7720-E06FP909B | 22-42-3065      | A-7720-F06FP909B |
| 22-42-3070      | A-7720-A07FP909B | 22-42-3071      | A-7720-B07FP909B | 22-42-3072      | A-7720-C07FP909B | 22-42-3073      | A-7720-D07FP909B | 22-42-3074      | A-7720-E07FP909B | 22-42-3075      | A-7720-F07FP909B |
| 22-42-3080      | A-7720-A08FP909B | 22-42-3081      | A-7720-B08FP909B | 22-42-3082      | A-7720-C08FP909B | 22-42-3083      | A-7720-D08FP909B | 22-42-3084      | A-7720-E08FP909B | 22-42-3085      | A-7720-F08FP909B |
| 22-42-3090      | A-7720-A09FP909B | 22-42-3091      | A-7720-B09FP909B | 22-42-3092      | A-7720-C09FP909B | 22-42-3093      | A-7720-D09FP909B | 22-42-3094      | A-7720-E09FP909B | 22-42-3095      | A-7720-F09FP909B |
| 22-42-3100      | A-7720-A10FP909B | 22-42-3101      | A-7720-B10FP909B | 22-42-3102      | A-7720-C10FP909B | 22-42-3103      | A-7720-D10FP909B | 22-42-3104      | A-7720-E10FP909B | 22-42-3105      | A-7720-F10FP909B |
| 22-42-3110      | A-7720-A11FP909B | 22-42-3111      | A-7720-B11FP909B | 22-42-3112      | A-7720-C11FP909B | 22-42-3113      | A-7720-D11FP909B | 22-42-3114      | A-7720-E11FP909B | 22-42-3115      | A-7720-F11FP909B |
| 22-42-3120      | A-7720-A12FP909B | 22-42-3121      | A-7720-B12FP909B | 22-42-3122      | A-7720-C12FP909B | 22-42-3123      | A-7720-D12FP909B | 22-42-3124      | A-7720-E12FP909B | 22-42-3125      | A-7720-F12FP909B |
| 22-42-3130      | A-7720-A13FP909B | 22-42-3131      | A-7720-B13FP909B | 22-42-3132      | A-7720-C13FP909B | 22-42-3133      | A-7720-D13FP909B | 22-42-3134      | A-7720-E13FP909B | 22-42-3135      | A-7720-F13FP909B |
| 22-42-3140      | A-7720-A14FP909B | 22-42-3141      | A-7720-B14FP909B | 22-42-3142      | A-7720-C14FP909B | 22-42-3143      | A-7720-D14FP909B | 22-42-3144      | A-7720-E14FP909B | 22-42-3145      | A-7720-F14FP909B |
| 22-42-3150      | A-7720-A15FP909B | 22-42-3151      | A-7720-B15FP909B | 22-42-3152      | A-7720-C15FP909B | 22-42-3153      | A-7720-D15FP909B | 22-42-3154      | A-7720-E15FP909B | 22-42-3155      | A-7720-F15FP909B |
| 22-42-3160      | A-7720-A16FP909B | 22-42-3161      | A-7720-B16FP909B | 22-42-3162      | A-7720-C16FP909B | 22-42-3163      | A-7720-D16FP909B | 22-42-3164      | A-7720-E16FP909B | 22-42-3165      | A-7720-F16FP909B |
| 22-42-3170      | A-7720-A17FP909B | 22-42-3171      | A-7720-B17FP909B | 22-42-3172      | A-7720-C17FP909B | 22-42-3173      | A-7720-D17FP909B | 22-42-3174      | A-7720-E17FP909B | 22-42-3175      | A-7720-F17FP909B |
| 22-42-3180      | A-7720-A18FP909B | 22-42-3181      | A-7720-B18FP909B | 22-42-3182      | A-7720-C18FP909B | 22-42-3183      | A-7720-D18FP909B | 22-42-3184      | A-7720-E18FP909B | 22-42-3185      | A-7720-F18FP909B |
| 22-42-3190      | A-7720-A19FP909B | 22-42-3191      | A-7720-B19FP909B | 22-42-3192      | A-7720-C19FP909B | 22-42-3193      | A-7720-D19FP909B | 22-42-3194      | A-7720-E19FP909B | 22-42-3195      | A-7720-F19FP909B |
| 22-42-3200      | A-7720-A20FP909B | 22-42-3201      | A-7720-B20FP909B | 22-42-3202      | A-7720-C20FP909B | 22-42-3203      | A-7720-D20FP909B | 22-42-3204      | A-7720-E20FP909B | 22-42-3205      | A-7720-F20FP909B |
| 22-42-3210      | A-7720-A21FP909B | 22-42-3211      | A-7720-B21FP909B | 22-42-3212      | A-7720-C21FP909B | 22-42-3213      | A-7720-D21FP909B | 22-42-3214      | A-7720-E21FP909B | 22-42-3215      | A-7720-F21FP909B |
| 22-42-3220      | A-7720-A22FP909B | 22-42-3221      | A-7720-B22FP909B | 22-42-3222      | A-7720-C22FP909B | 22-42-3223      | A-7720-D22FP909B | 22-42-3224      | A-7720-E22FP909B | 22-42-3225      | A-7720-F22FP909B |
| 22-42-3230      | A-7720-A23FP909B | 22-42-3231      | A-7720-B23FP909B | 22-42-3232      | A-7720-C23FP909B | 22-42-3233      | A-7720-D23FP909B | 22-42-3234      | A-7720-E23FP909B | 22-42-3235      | A-7720-F23FP909B |
| 22-42-3240      | A-7720-A24FP909B | 22-42-3241      | A-7720-B24FP909B | 22-42-3242      | A-7720-C24FP909B | 22-42-3243      | A-7720-D24FP909B | 22-42-3244      | A-7720-E24FP909B | 22-42-3245      | A-7720-F24FP909B |
| 22-42-3250      | A-7720-A25FP909B | 22-42-3251      | A-7720-B25FP909B | 22-42-3252      | A-7720-C25FP909B | 22-42-3253      | A-7720-D25FP909B | 22-42-3254      | A-7720-E25FP909B | 22-42-3255      | A-7720-F25FP909B |
| 22-42-3260      | A-7720-A26FP909B | 22-42-3261      | A-7720-B26FP909B | 22-42-3262      | A-7720-C26FP909B | 22-42-3263      | A-7720-D26FP909B | 22-42-3264      | A-7720-E26FP909B | 22-42-3265      | A-7720-F26FP909B |
| 22-42-3270      | A-7720-A27FP909B | 22-42-3271      | A-7720-B27FP909B | 22-42-3272      | A-7720-C27FP909B | 22-42-3273      | A-7720-D27FP909B | 22-42-3274      | A-7720-E27FP909B | 22-42-3275      | A-7720-F27FP909B |
| 22-42-3280      | A-7720-A28FP909B | 22-42-3281      | A-7720-B28FP909B | 22-42-3282      | A-7720-C28FP909B | 22-42-3283      | A-7720-D28FP909B | 22-42-3284      | A-7720-E28FP909B | 22-42-3285      | A-7720-F28FP909B |

|   |  |  |  |  |  |  |  |  |  |  |  |
|---|--|--|--|--|--|--|--|--|--|--|--|
| <p>REVISION: <b>BA</b></p> <p>ECR/ECN INFORMATION: UCP2009-2291</p> <p>DATE: 4/17/2009</p> <p>TITLE: <b>KK 100 IDT CONNECTOR ASSEMBLY</b></p> <p>SHEET No. <b>5</b></p> |  |  |  |  |  |  |  |  |  |  |  |
|---|--|--|--|--|--|--|--|--|--|--|--|

|                                     |  |  |  |                                      |  |  |  |                            |  |  |  |                            |  |  |  |
|-------------------------------------|--|--|--|--------------------------------------|--|--|--|----------------------------|--|--|--|----------------------------|--|--|--|
| DOCUMENT NUMBER: <b>SD-7720-001</b> |  |  |  | CREATED / REVISED BY: <b>MKIPPER</b> |  |  |  | CHECKED BY: <b>SSOUSEK</b> |  |  |  | APPROVED BY: <b>FSMITH</b> |  |  |  |
|-------------------------------------|--|--|--|--------------------------------------|--|--|--|----------------------------|--|--|--|----------------------------|--|--|--|

| A-7720-WANFP909B |                   | A-7720-WBNFP909B |                   | A-7720-WCNFP909B |                   | A-7720-WDNFP909B |                   | A-7720-WENFP909B |                   | A-7720-WFNFP909B |                   |
|------------------|-------------------|------------------|-------------------|------------------|-------------------|------------------|-------------------|------------------|-------------------|------------------|-------------------|
| HOUSING          | 7720-WAN          | HOUSING          | 7720-WBN          | HOUSING          | 7720-WCN          | HOUSING          | 7720WDN           | HOUSING          | 7720-WEN          | HOUSING          | 7720-WFN          |
| TERM. NO         | 41138-FP909       | TERM. NO         | 41138-FP909       | TERM. NO         | 41138-FP909       | TERM. NO         | 41138-FP909       | TERM. NO         | 41138-FP909       | TERM. NO         | 41138-FP909       |
| PLATING:         | P909              | PLATING:         | P909              | PLATING:         | P909              | PLATING:         | P909              | PLATING:         | P909              | PLATING:         | P909              |
| COLOR            | BLACK             | COLOR            | BLACK             | COLOR            | BLACK             | COLOR            | BLACK             | COLOR            | BLACK             | COLOR            | BLACK             |
| MATL NO          | ENG NO:           | MATL NO          | ENG NO:           | MATL NO          | ENG NO:           | MATL NO          | ENG NO:           | MATL NO          | ENG NO:           | MATL NO          | ENG NO:           |
| 22-42-6020       | A-7720-WA02FP909B | 22-42-6021       | A-7720-WB02FP909B | 22-42-6022       | A-7720-WC02FP909B | 22-42-6023       | A-7720-WD02FP909B | 22-42-6024       | A-7720-WE02FP909B | 22-42-6025       | A-7720-WF02FP909B |
| 22-42-6030       | A-7720-WA03FP909B | 22-42-6031       | A-7720-WB03FP909B | 22-42-6032       | A-7720-WC03FP909B | 22-42-6033       | A-7720-WD03FP909B | 22-42-6034       | A-7720-WE03FP909B | 22-42-6035       | A-7720-WF03FP909B |
| 22-42-6040       | A-7720-WA04FP909B | 22-42-6041       | A-7720-WB04FP909B | 22-42-6042       | A-7720-WC04FP909B | 22-42-6043       | A-7720-WD04FP909B | 22-42-6044       | A-7720-WE04FP909B | 22-42-6045       | A-7720-WF04FP909B |
| 22-42-6050       | A-7720-WA05FP909B | 22-42-6051       | A-7720-WB05FP909B | 22-42-6052       | A-7720-WC05FP909B | 22-42-6053       | A-7720-WD05FP909B | 22-42-6054       | A-7720-WE05FP909B | 22-42-6055       | A-7720-WF05FP909B |
| 22-42-6060       | A-7720-WA06FP909B | 22-42-6061       | A-7720-WB06FP909B | 22-42-6062       | A-7720-WC06FP909B | 22-42-6063       | A-7720-WD06FP909B | 22-42-6064       | A-7720-WE06FP909B | 22-42-6065       | A-7720-WF06FP909B |
| 22-42-6070       | A-7720-WA07FP909B | 22-42-6071       | A-7720-WB07FP909B | 22-42-6072       | A-7720-WC07FP909B | 22-42-6073       | A-7720-WD07FP909B | 22-42-6074       | A-7720-WE07FP909B | 22-42-6075       | A-7720-WF07FP909B |
| 22-42-6080       | A-7720-WA08FP909B | 22-42-6081       | A-7720-WB08FP909B | 22-42-6082       | A-7720-WC08FP909B | 22-42-6083       | A-7720-WD08FP909B | 22-42-6084       | A-7720-WE08FP909B | 22-42-6085       | A-7720-WF08FP909B |
| 22-42-6090       | A-7720-WA09FP909B | 22-42-6091       | A-7720-WB09FP909B | 22-42-6092       | A-7720-WC09FP909B | 22-42-6093       | A-7720-WD09FP909B | 22-42-6094       | A-7720-WE09FP909B | 22-42-6095       | A-7720-WF09FP909B |
| 22-42-6100       | A-7720-WA10FP909B | 22-42-6101       | A-7720-WB10FP909B | 22-42-6102       | A-7720-WC10FP909B | 22-42-6103       | A-7720-WD10FP909B | 22-42-6104       | A-7720-WE10FP909B | 22-42-6105       | A-7720-WF10FP909B |
| 22-42-6110       | A-7720-WA11FP909B | 22-42-6111       | A-7720-WB11FP909B | 22-42-6112       | A-7720-WC11FP909B | 22-42-6113       | A-7720-WD11FP909B | 22-42-6114       | A-7720-WE11FP909B | 22-42-6115       | A-7720-WF11FP909B |
| 22-42-6120       | A-7720-WA12FP909B | 22-42-6121       | A-7720-WB12FP909B | 22-42-6122       | A-7720-WC12FP909B | 22-42-6123       | A-7720-WD12FP909B | 22-42-6124       | A-7720-WE12FP909B | 22-42-6125       | A-7720-WF12FP909B |
| 22-42-6130       | A-7720-WA13FP909B | 22-42-6131       | A-7720-WB13FP909B | 22-42-6132       | A-7720-WC13FP909B | 22-42-6133       | A-7720-WD13FP909B | 22-42-6134       | A-7720-WE13FP909B | 22-42-6135       | A-7720-WF13FP909B |
| 22-42-6140       | A-7720-WA14FP909B | 22-42-6141       | A-7720-WB14FP909B | 22-42-6142       | A-7720-WC14FP909B | 22-42-6143       | A-7720-WD14FP909B | 22-42-6144       | A-7720-WE14FP909B | 22-42-6145       | A-7720-WF14FP909B |
| 22-42-6150       | A-7720-WA15FP909B | 22-42-6151       | A-7720-WB15FP909B | 22-42-6152       | A-7720-WC15FP909B | 22-42-6153       | A-7720-WD15FP909B | 22-42-6154       | A-7720-WE15FP909B | 22-42-6155       | A-7720-WF15FP909B |
| 22-42-6160       | A-7720-WA16FP909B | 22-42-6161       | A-7720-WB16FP909B | 22-42-6162       | A-7720-WC16FP909B | 22-42-6163       | A-7720-WD16FP909B | 22-42-6164       | A-7720-WE16FP909B | 22-42-6165       | A-7720-WF16FP909B |
| 22-42-6170       | A-7720-WA17FP909B | 22-42-6171       | A-7720-WB17FP909B | 22-42-6172       | A-7720-WC17FP909B | 22-42-6173       | A-7720-WD17FP909B | 22-42-6174       | A-7720-WE17FP909B | 22-42-6175       | A-7720-WF17FP909B |
| 22-42-6180       | A-7720-WA18FP909B | 22-42-6181       | A-7720-WB18FP909B | 22-42-6182       | A-7720-WC18FP909B | 22-42-6183       | A-7720-WD18FP909B | 22-42-6184       | A-7720-WE18FP909B | 22-42-6185       | A-7720-WF18FP909B |
| 22-42-6190       | A-7720-WA19FP909B | 22-42-6191       | A-7720-WB19FP909B | 22-42-6192       | A-7720-WC19FP909B | 22-42-6193       | A-7720-WD19FP909B | 22-42-6194       | A-7720-WE19FP909B | 22-42-6195       | A-7720-WF19FP909B |
| 22-42-6200       | A-7720-WA20FP909B | 22-42-6201       | A-7720-WB20FP909B | 22-42-6202       | A-7720-WC20FP909B | 22-42-6203       | A-7720-WD20FP909B | 22-42-6204       | A-7720-WE20FP909B | 22-42-6205       | A-7720-WF20FP909B |
| 22-42-6210       | A-7720-WA21FP909B | 22-42-6211       | A-7720-WB21FP909B | 22-42-6212       | A-7720-WC21FP909B | 22-42-6213       | A-7720-WD21FP909B | 22-42-6214       | A-7720-WE21FP909B | 22-42-6215       | A-7720-WF21FP909B |
| 22-42-6220       | A-7720-WA22FP909B | 22-42-6221       | A-7720-WB22FP909B | 22-42-6222       | A-7720-WC22FP909B | 22-42-6223       | A-7720-WD22FP909B | 22-42-6224       | A-7720-WE22FP909B | 22-42-6225       | A-7720-WF22FP909B |
| 22-42-6230       | A-7720-WA23FP909B | 22-42-6231       | A-7720-WB23FP909B | 22-42-6232       | A-7720-WC23FP909B | 22-42-6233       | A-7720-WD23FP909B | 22-42-6234       | A-7720-WE23FP909B | 22-42-6235       | A-7720-WF23FP909B |
| 22-42-6240       | A-7720-WA24FP909B | 22-42-6241       | A-7720-WB24FP909B | 22-42-6242       | A-7720-WC24FP909B | 22-42-6243       | A-7720-WD24FP909B | 22-42-6244       | A-7720-WE24FP909B | 22-42-6245       | A-7720-WF24FP909B |
| 22-42-6250       | A-7720-WA25FP909B | 22-42-6251       | A-7720-WB25FP909B | 22-42-6252       | A-7720-WC25FP909B | 22-42-6253       | A-7720-WD25FP909B | 22-42-6254       | A-7720-WE25FP909B | 22-42-6255       | A-7720-WF25FP909B |
| 22-42-6260       | A-7720-WA26FP909B | 22-42-6261       | A-7720-WB26FP909B | 22-42-6262       | A-7720-WC26FP909B | 22-42-6263       | A-7720-WD26FP909B | 22-42-6264       | A-7720-WE26FP909B | 22-42-6265       | A-7720-WF26FP909B |
| 22-42-6270       | A-7720-WA27FP909B | 22-42-6271       | A-7720-WB27FP909B | 22-42-6272       | A-7720-WC27FP909B | 22-42-6273       | A-7720-WD27FP909B | 22-42-6274       | A-7720-WE27FP909B | 22-42-6275       | A-7720-WF27FP909B |
| 22-42-6280       | A-7720-WA28FP909B | 22-42-6281       | A-7720-WB28FP909B | 22-42-6282       | A-7720-WC28FP909B | 22-42-6283       | A-7720-WD28FP909B | 22-42-6284       | A-7720-WE28FP909B | 22-42-6285       | A-7720-WF28FP909B |

|  |  |  |  |  |  |  |  |  |  |  |  |
|--|--|--|--|--|--|--|--|--|--|--|--|
|  |  |  |  |  |  |  |  |  |  |  |  |
|--|--|--|--|--|--|--|--|--|--|--|--|

|                                   |                             |                 |   |  |  |  |  |  |  |                  |  |  |
|-----------------------------------|-----------------------------|-----------------|---|--|--|--|--|--|--|------------------|--|--|
| <b>REVISION:</b><br><br><b>BA</b> | <b>ECR/ECN INFORMATION:</b> |                 | <b>TITLE:</b><br><br><b>KK 100 IDT CONNECTOR ASSEMBLY</b> |  |  |  |  |  |  | <b>SHEET No.</b> |  |  |
|                                   | EC No.: UCP2009-2291        |                 |   |  |  |  |  |  |  | <b>6</b>         |  |  |
|                                   |                             | DATE: 4/17/2009 |   |  |  |  |  |  |  |                  |  |  |

|   |  |  |  |  |  |                                      |  |  |                                      |  |  |
|---|--|--|--|--|--|--------------------------------------|--|--|--------------------------------------|--|--|
| <b>DOCUMENT NUMBER:</b><br><b>SD-7720-001</b> |  |  | <b>CREATED / REVISED BY:</b><br><b>MKIPPER</b> |  |  | <b>CHECKED BY:</b><br><b>SSOUSEK</b> |  |  | <b>APPROVED BY:</b><br><b>FSMITH</b> |  |  |
|---|--|--|--|--|--|--------------------------------------|--|--|--------------------------------------|--|--|

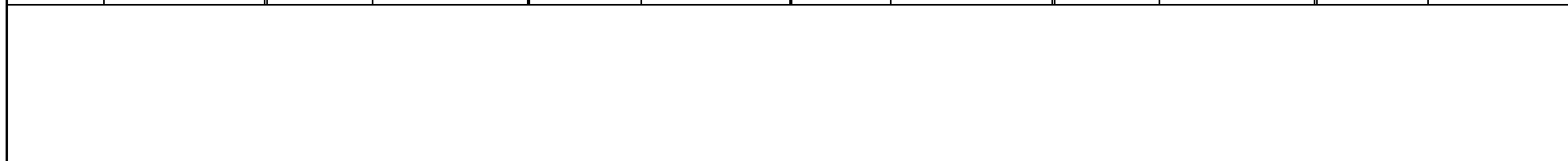


| A-7720-ANA501A |                 | A-7720-BNA501A |                 | A-7720-CNA501A |                 | A-7720-DNA501A |                 | A-7720-ENA501A |                 | A-7720-FNA501A |                 |
|----------------|-----------------|----------------|-----------------|----------------|-----------------|----------------|-----------------|----------------|-----------------|----------------|-----------------|
| HOUSING        | 7720-AN         | HOUSING        | 7720-BN         | HOUSING        | 7720-CN         | HOUSING        | 7720-DN         | HOUSING        | 7720-EN         | HOUSING        | 7720-FN         |
| TERM. NO       | 7691-A501       | TERM. NO       | 7691-A501       | TERM. NO       | 7691-A501       | TERM. NO       | 7691-A501       | TERM. NO       | 7691-A501       | TERM. NO       | 7691-A501       |
| PLATING:       | 501             | PLATING:       | 501             | PLATING:       | 501             | PLATING:       | 501             | PLATING:       | 501             | PLATING:       | 501             |
| COLOR          | BROWN           | COLOR          | BROWN           | COLOR          | BROWN           | COLOR          | BROWN           | COLOR          | BROWN           | COLOR          | BROWN           |
| MATL NO        | ENG NO:         | MATL NO        | ENG NO:         | MATL NO        | ENG NO:         | MATL NO        | ENG NO:         | MATL NO        | ENG NO:         | MATL NO        | ENG NO:         |
|                | A-7720-A02A501A | 22-45-8021     | A-7720-B02A501A | 22-45-7021     | A-7720-C02A501A |                | A-7720-D02A501A | 22-45-7024     | A-7720-E02A501A |                | A-7720-F02A501A |
|                | A-7720-A03A501A | 22-45-8031     | A-7720-B03A501A | 22-45-7031     | A-7720-C03A501A |                | A-7720-D03A501A | 22-45-7034     | A-7720-E03A501A |                | A-7720-F03A501A |
|                | A-7720-A04A501A | 22-45-8041     | A-7720-B04A501A |                | A-7720-C04A501A |                | A-7720-D04A501A | 22-45-7044     | A-7720-E04A501A |                | A-7720-F04A501A |
| 22-45-7053     | A-7720-A05A501A | 22-45-8051     | A-7720-B05A501A |                | A-7720-C05A501A |                | A-7720-D05A501A | 22-45-7054     | A-7720-E05A501A |                | A-7720-F05A501A |
|                | A-7720-A06A501A | 22-45-8061     | A-7720-B06A501A | 22-45-7061     | A-7720-C06A501A |                | A-7720-D06A501A | 22-45-7064     | A-7720-E06A501A |                | A-7720-F06A501A |
| 22-45-7073     | A-7720-A07A501A | 22-45-8071     | A-7720-B07A501A |                | A-7720-C07A501A |                | A-7720-D07A501A | 22-45-7074     | A-7720-E07A501A |                | A-7720-F07A501A |
| 22-45-7083     | A-7720-A08A501A | 22-45-8081     | A-7720-B08A501A | 22-45-7081     | A-7720-C08A501A | 22-45-7089     | A-7720-D08A501A | 22-45-7084     | A-7720-E08A501A | 22-45-7087     | A-7720-F08A501A |
|                | A-7720-A09A501A | 22-45-8091     | A-7720-B09A501A |                | A-7720-C09A501A |                | A-7720-D09A501A | 22-45-7094     | A-7720-E09A501A |                | A-7720-F09A501A |
|                | A-7720-A10A501A | 22-45-8101     | A-7720-B10A501A |                | A-7720-C10A501A |                | A-7720-D10A501A | 22-45-7104     | A-7720-E10A501A |                | A-7720-F10A501A |
|                | A-7720-A11A501A | 22-45-8111     | A-7720-B11A501A |                | A-7720-C11A501A |                | A-7720-D11A501A | 22-45-7114     | A-7720-E11A501A |                | A-7720-F11A501A |
|                | A-7720-A12A501A | 22-45-8121     | A-7720-B12A501A |                | A-7720-C12A501A |                | A-7720-D12A501A | 22-45-7124     | A-7720-E12A501A |                | A-7720-F12A501A |
|                | A-7720-A13A501A | 22-45-8131     | A-7720-B13A501A | 22-45-7131     | A-7720-C13A501A |                | A-7720-D13A501A | 22-45-7134     | A-7720-E13A501A |                | A-7720-F13A501A |
| 22-45-7143     | A-7720-A14A501A | 22-45-8141     | A-7720-B14A501A |                | A-7720-C14A501A |                | A-7720-D14A501A | 22-45-7144     | A-7720-E14A501A |                | A-7720-F14A501A |
|                | A-7720-A15A501A | 22-45-8151     | A-7720-B15A501A |                | A-7720-C15A501A |                | A-7720-D15A501A | 22-45-7154     | A-7720-E15A501A |                | A-7720-F15A501A |
|                | A-7720-A16A501A | 22-45-8161     | A-7720-B16A501A |                | A-7720-C16A501A |                | A-7720-D16A501A | 22-45-7164     | A-7720-E16A501A |                | A-7720-F16A501A |
|                | A-7720-A17A501A | 22-45-8171     | A-7720-B17A501A |                | A-7720-C17A501A |                | A-7720-D17A501A | 22-45-7174     | A-7720-E17A501A |                | A-7720-F17A501A |
|                | A-7720-A18A501A | 22-45-8181     | A-7720-B18A501A |                | A-7720-C18A501A |                | A-7720-D18A501A | 22-45-7184     | A-7720-E18A501A |                | A-7720-F18A501A |
|                | A-7720-A19A501A | 22-45-8191     | A-7720-B19A501A |                | A-7720-C19A501A |                | A-7720-D19A501A | 22-45-7194     | A-7720-E19A501A |                | A-7720-F19A501A |
|                | A-7720-A20A501A | 22-45-8201     | A-7720-B20A501A |                | A-7720-C20A501A |                | A-7720-D20A501A | 22-45-7204     | A-7720-E20A501A |                | A-7720-F20A501A |
|                | A-7720-A21A501A | 22-45-8211     | A-7720-B21A501A |                | A-7720-C21A501A |                | A-7720-D21A501A | 22-45-7214     | A-7720-E21A501A |                | A-7720-F21A501A |
|                | A-7720-A22A501A | 22-45-8221     | A-7720-B22A501A |                | A-7720-C22A501A |                | A-7720-D22A501A | 22-45-7224     | A-7720-E22A501A |                | A-7720-F22A501A |
|                | A-7720-A23A501A | 22-45-8231     | A-7720-B23A501A |                | A-7720-C23A501A |                | A-7720-D23A501A | 22-45-7234     | A-7720-E23A501A |                | A-7720-F23A501A |
|                | A-7720-A24A501A | 22-45-8241     | A-7720-B24A501A | 22-45-7241     | A-7720-C24A501A |                | A-7720-D24A501A | 22-45-7244     | A-7720-E24A501A |                | A-7720-F24A501A |
|                | A-7720-A25A501A | 22-45-8251     | A-7720-B25A501A |                | A-7720-C25A501A |                | A-7720-D25A501A | 22-45-7254     | A-7720-E25A501A |                | A-7720-F25A501A |
|                | A-7720-A26A501A | 22-45-8261     | A-7720-B26A501A |                | A-7720-C26A501A |                | A-7720-D26A501A | 22-45-7264     | A-7720-E26A501A |                | A-7720-F26A501A |
|                | A-7720-A27A501A | 22-45-8271     | A-7720-B27A501A |                | A-7720-C27A501A |                | A-7720-D27A501A | 22-45-7274     | A-7720-E27A501A |                | A-7720-F27A501A |
|                | A-7720-A28A501A | 22-45-8281     | A-7720-B28A501A |                | A-7720-C28A501A |                | A-7720-D28A501A | 22-45-7284     | A-7720-E28A501A |                | A-7720-F28A501A |



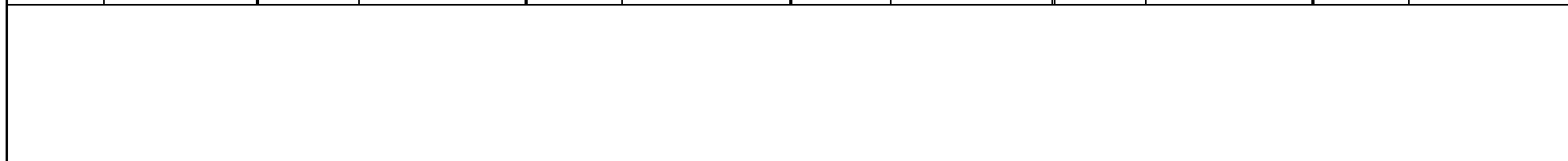
|   |  |   |                                      |
|---|--|---|--------------------------------------|
| <b>REVISION:</b><br><b>BA</b>                 | <b>ECR/ECN INFORMATION:</b>                    | <b>TITLE:</b><br><b>KK 100 IDT CONNECTOR ASSEMBLY</b> | <b>SHEET No.</b><br><b>7</b>         |
|   | EC No.: UCP2009-2291<br>DATE: 4/17/2009        |   |                                      |
| <b>DOCUMENT NUMBER:</b><br><b>SD-7720-001</b> | <b>CREATED / REVISED BY:</b><br><b>MKIPPER</b> | <b>CHECKED BY:</b><br><b>SSOUSEK</b>                  | <b>APPROVED BY:</b><br><b>FSMITH</b> |

| A-7720-ANH501B |                 | A-7720-BNH501B |                 | A-7720-CNH501B |                 | A-7720-DNH501B |                 | A-7720-ENH501B |                 | A-7720-FNH501B |                 |
|----------------|-----------------|----------------|-----------------|----------------|-----------------|----------------|-----------------|----------------|-----------------|----------------|-----------------|
| HOUSING        | 7720-AN         | HOUSING        | 7720-BN         | HOUSING        | 7720-CN         | HOUSING        | 7720-DN         | HOUSING        | 7720-EN         | HOUSING        | 7720-FN         |
| TERM. NO       | 41138-H501      | TERM. NO       | 41138-H501      | TERM. NO       | 41138-H501      | TERM. NO       | 41138-H501      | TERM. NO       | 41138-H501      | TERM. NO       | 41138-H501      |
| PLATING:       | 501             | PLATING:       | 501             | PLATING:       | 501             | PLATING:       | 501             | PLATING:       | 501             | PLATING:       | 501             |
| COLOR          | GREEN           | COLOR          | GREEN           | COLOR          | GREEN           | COLOR          | GREEN           | COLOR          | GREEN           | COLOR          | GREEN           |
| MATL NO        | ENG NO:         | MATL NO        | ENG NO:         | MATL NO        | ENG NO:         | MATL NO        | ENG NO:         | MATL NO        | ENG NO:         | MATL NO        | ENG NO:         |
| 22-45-7025     | A-7720-A02H501B | 22-45-8022     | A-7720-B02H501B | 22-45-7022     | A-7720-C02H501B | 22-45-8027     | A-7720-D02H501B | 22-45-7026     | A-7720-E02H501B | 22-45-7028     | A-7720-F02H501B |
| 22-45-7035     | A-7720-A03H501B | 22-45-8032     | A-7720-B03H501B |                | A-7720-C03H501B | 22-45-8037     | A-7720-D03H501B | 22-45-7036     | A-7720-E03H501B | 22-45-7038     | A-7720-F03H501B |
| 22-45-7045     | A-7720-A04H501B | 22-45-8042     | A-7720-B04H501B |                | A-7720-C04H501B | 22-45-8047     | A-7720-D04H501B | 22-45-7046     | A-7720-E04H501B | 22-45-7048     | A-7720-F04H501B |
| 22-45-7055     | A-7720-A05H501B | 22-45-8052     | A-7720-B05H501B |                | A-7720-C05H501B | 22-45-8057     | A-7720-D05H501B | 22-45-7056     | A-7720-E05H501B | 22-45-7058     | A-7720-F05H501B |
| 22-45-7065     | A-7720-A06H501B |                | A-7720-B06H501B | 22-45-7062     | A-7720-C06H501B | 22-45-8067     | A-7720-D06H501B | 22-45-7066     | A-7720-E06H501B | 22-45-7068     | A-7720-F06H501B |
| 22-45-7075     | A-7720-A07H501B |                | A-7720-B07H501B |                | A-7720-C07H501B | 22-45-8077     | A-7720-D07H501B | 22-45-7076     | A-7720-E07H501B | 22-45-7078     | A-7720-F07H501B |
| 22-45-7085     | A-7720-A08H501B | 22-45-8082     | A-7720-B08H501B | 22-45-7082     | A-7720-C08H501B | 22-45-8087     | A-7720-D08H501B | 22-45-7086     | A-7720-E08H501B | 22-45-7088     | A-7720-F08H501B |
| 22-45-7095     | A-7720-A09H501B |                | A-7720-B09H501B |                | A-7720-C09H501B | 22-45-8097     | A-7720-D09H501B | 22-45-7096     | A-7720-E09H501B | 22-45-7098     | A-7720-F09H501B |
| 22-45-7105     | A-7720-A10H501B | 22-45-8102     | A-7720-B10H501B | 22-45-7102     | A-7720-C10H501B | 22-45-8107     | A-7720-D10H501B | 22-45-7106     | A-7720-E10H501B | 22-45-7108     | A-7720-F10H501B |
| 22-45-7115     | A-7720-A11H501B |                | A-7720-B11H501B |                | A-7720-C11H501B | 22-45-8117     | A-7720-D11H501B | 22-45-7116     | A-7720-E11H501B | 22-45-7118     | A-7720-F11H501B |
| 22-45-7125     | A-7720-A12H501B |                | A-7720-B12H501B |                | A-7720-C12H501B | 22-45-8127     | A-7720-D12H501B | 22-45-7126     | A-7720-E12H501B | 22-45-7128     | A-7720-F12H501B |
| 22-45-7135     | A-7720-A13H501B |                | A-7720-B13H501B | 22-45-7132     | A-7720-C13H501B | 22-45-8137     | A-7720-D13H501B | 22-45-7136     | A-7720-E13H501B | 22-45-7138     | A-7720-F13H501B |
| 22-45-7145     | A-7720-A14H501B |                | A-7720-B14H501B | 22-45-7142     | A-7720-C14H501B | 22-45-8147     | A-7720-D14H501B | 22-45-7146     | A-7720-E14H501B | 22-45-7148     | A-7720-F14H501B |
| 22-45-7155     | A-7720-A15H501B |                | A-7720-B15H501B |                | A-7720-C15H501B | 22-45-8157     | A-7720-D15H501B | 22-45-7156     | A-7720-E15H501B | 22-45-7158     | A-7720-F15H501B |
| 22-45-7165     | A-7720-A16H501B |                | A-7720-B16H501B |                | A-7720-C16H501B | 22-45-8167     | A-7720-D16H501B | 22-45-7166     | A-7720-E16H501B | 22-45-7168     | A-7720-F16H501B |
| 22-45-7175     | A-7720-A17H501B |                | A-7720-B17H501B |                | A-7720-C17H501B | 22-45-8177     | A-7720-D17H501B | 22-45-7176     | A-7720-E17H501B | 22-45-7178     | A-7720-F17H501B |
| 22-45-7185     | A-7720-A18H501B |                | A-7720-B18H501B |                | A-7720-C18H501B | 22-45-8187     | A-7720-D18H501B | 22-45-7186     | A-7720-E18H501B | 22-45-7188     | A-7720-F18H501B |
| 22-45-7195     | A-7720-A19H501B |                | A-7720-B19H501B |                | A-7720-C19H501B | 22-45-8197     | A-7720-D19H501B | 22-45-7196     | A-7720-E19H501B | 22-45-7198     | A-7720-F19H501B |
| 22-45-7205     | A-7720-A20H501B |                | A-7720-B20H501B |                | A-7720-C20H501B | 22-45-8207     | A-7720-D20H501B | 22-45-7206     | A-7720-E20H501B | 22-45-7208     | A-7720-F20H501B |
| 22-45-7215     | A-7720-A21H501B |                | A-7720-B21H501B |                | A-7720-C21H501B | 22-45-8217     | A-7720-D21H501B | 22-45-7216     | A-7720-E21H501B | 22-45-7218     | A-7720-F21H501B |
| 22-45-7225     | A-7720-A22H501B |                | A-7720-B22H501B |                | A-7720-C22H501B | 22-45-8227     | A-7720-D22H501B | 22-45-7226     | A-7720-E22H501B | 22-45-7228     | A-7720-F22H501B |
| 22-45-7235     | A-7720-A23H501B |                | A-7720-B23H501B |                | A-7720-C23H501B | 22-45-8237     | A-7720-D23H501B | 22-45-7236     | A-7720-E23H501B | 22-45-7238     | A-7720-F23H501B |
| 22-45-7245     | A-7720-A24H501B |                | A-7720-B24H501B |                | A-7720-C24H501B | 22-45-8247     | A-7720-D24H501B | 22-45-7246     | A-7720-E24H501B | 22-45-7248     | A-7720-F24H501B |
| 22-45-7255     | A-7720-A25H501B |                | A-7720-B25H501B |                | A-7720-C25H501B | 22-45-8257     | A-7720-D25H501B | 22-45-7256     | A-7720-E25H501B | 22-45-7258     | A-7720-F25H501B |
| 22-45-7265     | A-7720-A26H501B |                | A-7720-B26H501B |                | A-7720-C26H501B | 22-45-8267     | A-7720-D26H501B | 22-45-7266     | A-7720-E26H501B | 22-45-7268     | A-7720-F26H501B |
| 22-45-7275     | A-7720-A27H501B |                | A-7720-B27H501B |                | A-7720-C27H501B | 22-45-8277     | A-7720-D27H501B | 22-45-7276     | A-7720-E27H501B | 22-45-7278     | A-7720-F27H501B |
| 22-45-7285     | A-7720-A28H501B |                | A-7720-B28H501B |                | A-7720-C28H501B | 22-45-8287     | A-7720-D28H501B | 22-45-7286     | A-7720-E28H501B | 22-45-7288     | A-7720-F28H501B |



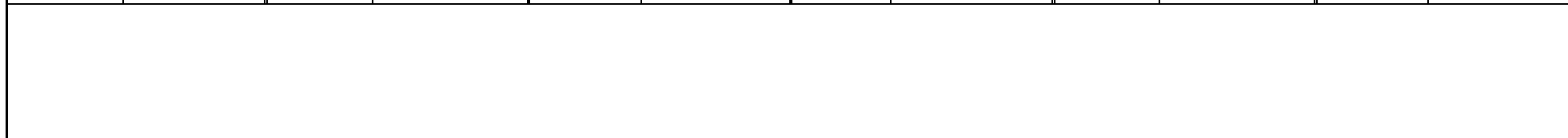
|   |  |   |                                      |
|---|--|---|--------------------------------------|
| <u>REVISION:</u><br><b>BA</b>                 | <u>ECR/ECN INFORMATION:</u><br>EC No.: UCP2009-2291<br>DATE: 4/17/2009 | <u>TITLE:</u><br><b>KK 100 IDT CONNECTOR ASSEMBLY</b> | <u>SHEET No.</u><br><b>8</b>         |
| <u>DOCUMENT NUMBER:</u><br><b>SD-7720-001</b> |  | <u>CREATED / REVISED BY:</u><br><b>MKIPPER</b>        | <u>CHECKED BY:</u><br><b>SSOUSEK</b> |
|   |  | <u>APPROVED BY:</u><br><b>FSMITH</b>                  |                                      |

| A-7720-WANF501B |                  | A-7720-WBNF501B |                  | A-7720-WCNF501B |                  | A-7720-WDNF501B |                  | A-7720-WENF501B |                  | A-7720-WFNF501B |                  |
|-----------------|------------------|-----------------|------------------|-----------------|------------------|-----------------|------------------|-----------------|------------------|-----------------|------------------|
| HOUSING         | 7720-WAN         | HOUSING         | 7720-WBN         | HOUSING         | 7720-WCN         | HOUSING         | 7720-WDN         | HOUSING         | 7720-WEN         | HOUSING         | 7720-WFN         |
| TERM. NO        | 41138-F501       | TERM. NO        | 41138-F501       | TERM. NO        | 41138-F501       | TERM. NO        | 41138-F501       | TERM. NO        | 41138-F501       | TERM. NO        | 41138-F501       |
| PLATING:        | 501              | PLATING:        | 501              | PLATING:        | 501              | PLATING:        | 501              | PLATING:        | 501              | PLATING:        | 501              |
| COLOR           | BLACK            | COLOR           | BLACK            | COLOR           | BLACK            | COLOR           | BLACK            | COLOR           | BLACK            | COLOR           | BLACK            |
| MATL NO         | ENG NO:          | MATL NO         | ENG NO:          | MATL NO         | ENG NO:          | MATL NO         | ENG NO:          | MATL NO         | ENG NO:          | MATL NO         | ENG NO:          |
| 22-45-6021      | A-7720-WA02F501B | 22-45-6025      | A-7720-WB02F501B | 22-45-6026      | A-7720-WC02F501B | 22-45-6027      | A-7720-WD02F501B | 22-45-6028      | A-7720-WE02F501B | 22-45-6029      | A-7720-WF02F501B |
| 22-45-6031      | A-7720-WA03F501B | 22-45-6035      | A-7720-WB03F501B | 22-45-6036      | A-7720-WC03F501B | 22-45-6037      | A-7720-WD03F501B | 22-45-6038      | A-7720-WE03F501B | 22-45-6039      | A-7720-WF03F501B |
| 22-45-6041      | A-7720-WA04F501B | 22-45-6045      | A-7720-WB04F501B | 22-45-6046      | A-7720-WC04F501B | 22-45-6047      | A-7720-WD04F501B | 22-45-6048      | A-7720-WE04F501B | 22-45-6049      | A-7720-WF04F501B |
| 22-45-6051      | A-7720-WA05F501B | 22-45-6055      | A-7720-WB05F501B | 22-45-6056      | A-7720-WC05F501B | 22-45-6057      | A-7720-WD05F501B | 22-45-6058      | A-7720-WE05F501B | 22-45-6059      | A-7720-WF05F501B |
| 22-45-6061      | A-7720-WA06F501B | 22-45-6065      | A-7720-WB06F501B | 22-45-6066      | A-7720-WC06F501B | 22-45-6067      | A-7720-WD06F501B | 22-45-6068      | A-7720-WE06F501B | 22-45-6069      | A-7720-WF06F501B |
| 22-45-6071      | A-7720-WA07F501B | 22-45-6075      | A-7720-WB07F501B | 22-45-6076      | A-7720-WC07F501B | 22-45-6077      | A-7720-WD07F501B | 22-45-6078      | A-7720-WE07F501B | 22-45-6079      | A-7720-WF07F501B |
| 22-45-6081      | A-7720-WA08F501B | 22-45-6085      | A-7720-WB08F501B | 22-45-6086      | A-7720-WC08F501B | 22-45-6087      | A-7720-WD08F501B | 22-45-6088      | A-7720-WE08F501B | 22-45-6089      | A-7720-WF08F501B |
| 22-45-6091      | A-7720-WA09F501B | 22-45-6095      | A-7720-WB09F501B | 22-45-6096      | A-7720-WC09F501B | 22-45-6097      | A-7720-WD09F501B | 22-45-6098      | A-7720-WE09F501B | 22-45-6099      | A-7720-WF09F501B |
| 22-45-6101      | A-7720-WA10F501B | 22-45-6105      | A-7720-WB10F501B | 22-45-6106      | A-7720-WC10F501B | 22-45-6107      | A-7720-WD10F501B | 22-45-6108      | A-7720-WE10F501B | 22-45-6109      | A-7720-WF10F501B |
| 22-45-6111      | A-7720-WA11F501B | 22-45-6115      | A-7720-WB11F501B | 22-45-6116      | A-7720-WC11F501B | 22-45-6117      | A-7720-WD11F501B | 22-45-6118      | A-7720-WE11F501B | 22-45-6119      | A-7720-WF11F501B |
| 22-45-6121      | A-7720-WA12F501B | 22-45-6125      | A-7720-WB12F501B | 22-45-6126      | A-7720-WC12F501B | 22-45-6127      | A-7720-WD12F501B | 22-45-6128      | A-7720-WE12F501B | 22-45-6129      | A-7720-WF12F501B |
| 22-45-6131      | A-7720-WA13F501B | 22-45-6135      | A-7720-WB13F501B | 22-45-6136      | A-7720-WC13F501B | 22-45-6137      | A-7720-WD13F501B | 22-45-6138      | A-7720-WE13F501B | 22-45-6139      | A-7720-WF13F501B |
| 22-45-6141      | A-7720-WA14F501B | 22-45-6145      | A-7720-WB14F501B | 22-45-6146      | A-7720-WC14F501B | 22-45-6147      | A-7720-WD14F501B | 22-45-6148      | A-7720-WE14F501B | 22-45-6149      | A-7720-WF14F501B |
| 22-45-6151      | A-7720-WA15F501B | 22-45-6155      | A-7720-WB15F501B | 22-45-6156      | A-7720-WC15F501B | 22-45-6157      | A-7720-WD15F501B | 22-45-6158      | A-7720-WE15F501B | 22-45-6159      | A-7720-WF15F501B |
| 22-45-6161      | A-7720-WA16F501B | 22-45-6165      | A-7720-WB16F501B | 22-45-6166      | A-7720-WC16F501B | 22-45-6167      | A-7720-WD16F501B | 22-45-6168      | A-7720-WE16F501B | 22-45-6169      | A-7720-WF16F501B |
| 22-45-6171      | A-7720-WA17F501B | 22-45-6175      | A-7720-WB17F501B | 22-45-6176      | A-7720-WC17F501B | 22-45-6177      | A-7720-WD17F501B | 22-45-6178      | A-7720-WE17F501B | 22-45-6179      | A-7720-WF17F501B |
| 22-45-6181      | A-7720-WA18F501B | 22-45-6185      | A-7720-WB18F501B | 22-45-6186      | A-7720-WC18F501B | 22-45-6187      | A-7720-WD18F501B | 22-45-6188      | A-7720-WE18F501B | 22-45-6189      | A-7720-WF18F501B |
| 22-45-6191      | A-7720-WA19F501B | 22-45-6195      | A-7720-WB19F501B | 22-45-6196      | A-7720-WC19F501B | 22-45-6197      | A-7720-WD19F501B | 22-45-6198      | A-7720-WE19F501B | 22-45-6199      | A-7720-WF19F501B |
| 22-45-6201      | A-7720-WA20F501B | 22-45-6205      | A-7720-WB20F501B | 22-45-6206      | A-7720-WC20F501B | 22-45-6207      | A-7720-WD20F501B | 22-45-6208      | A-7720-WE20F501B | 22-45-6209      | A-7720-WF20F501B |
| 22-45-6211      | A-7720-WA21F501B | 22-45-6215      | A-7720-WB21F501B | 22-45-6216      | A-7720-WC21F501B | 22-45-6217      | A-7720-WD21F501B | 22-45-6218      | A-7720-WE21F501B | 22-45-6219      | A-7720-WF21F501B |
| 22-45-6221      | A-7720-WA22F501B | 22-45-6225      | A-7720-WB22F501B | 22-45-6226      | A-7720-WC22F501B | 22-45-6227      | A-7720-WD22F501B | 22-45-6228      | A-7720-WE22F501B | 22-45-6229      | A-7720-WF22F501B |
| 22-45-6231      | A-7720-WA23F501B | 22-45-6235      | A-7720-WB23F501B | 22-45-6236      | A-7720-WC23F501B | 22-45-6237      | A-7720-WD23F501B | 22-45-6238      | A-7720-WE23F501B | 22-45-6239      | A-7720-WF23F501B |
| 22-45-6241      | A-7720-WA24F501B | 22-45-6245      | A-7720-WB24F501B | 22-45-6246      | A-7720-WC24F501B | 22-45-6247      | A-7720-WD24F501B | 22-45-6248      | A-7720-WE24F501B | 22-45-6249      | A-7720-WF24F501B |
| 22-45-6251      | A-7720-WA25F501B | 22-45-6255      | A-7720-WB25F501B | 22-45-6256      | A-7720-WC25F501B | 22-45-6257      | A-7720-WD25F501B | 22-45-6258      | A-7720-WE25F501B | 22-45-6259      | A-7720-WF25F501B |
| 22-45-6261      | A-7720-WA26F501B | 22-45-6265      | A-7720-WB26F501B | 22-45-6266      | A-7720-WC26F501B | 22-45-6267      | A-7720-WD26F501B | 22-45-6268      | A-7720-WE26F501B | 22-45-6269      | A-7720-WF26F501B |
| 22-45-6271      | A-7720-WA27F501B | 22-45-6275      | A-7720-WB27F501B | 22-45-6276      | A-7720-WC27F501B | 22-45-6277      | A-7720-WD27F501B | 22-45-6278      | A-7720-WE27F501B | 22-45-6279      | A-7720-WF27F501B |
| 22-45-6281      | A-7720-WA28F501B | 22-45-6285      | A-7720-WB28F501B | 22-45-6286      | A-7720-WC28F501B | 22-45-6287      | A-7720-WD28F501B | 22-45-6288      | A-7720-WE28F501B | 22-45-6289      | A-7720-WF28F501B |



|   |  |   |                                      |
|---|--|---|--------------------------------------|
| <u>REVISION:</u><br><b>BA</b>                 | <u>ECR/ECN INFORMATION:</u><br>EC No.: UCP2009-2291<br>DATE: 4/17/2009 | <u>TITLE:</u><br><b>KK 100 IDT CONNECTOR ASSEMBLY</b> | <u>SHEET No.</u><br><b>9</b>         |
| <u>DOCUMENT NUMBER:</u><br><b>SD-7720-001</b> | <u>CREATED / REVISED BY:</u><br><b>MKIPPER</b>                         | <u>CHECKED BY:</u><br><b>SSOUSEK</b>                  | <u>APPROVED BY:</u><br><b>FSMITH</b> |

| A-7720-ANH503B |                 | A-7720-BNH503B |                 | A-7720-CNH503B |                 | A-7720-DNH503B |                 | A-7720-ENH503B |                 | A-7720-FNH503B |                 |
|----------------|-----------------|----------------|-----------------|----------------|-----------------|----------------|-----------------|----------------|-----------------|----------------|-----------------|
| HOUSING        | 7720-AN         | HOUSING        | 7720-BN         | HOUSING        | 7720-CN         | HOUSING        | 7720-DN         | HOUSING        | 7720-EN         | HOUSING        | 7720-FN         |
| TERM. NO       | 41138-H503      | TERM. NO       | 41138-H503      | TERM. NO       | 41138-H503      | TERM. NO       | 41138-H503      | TERM. NO       | 41138-H503      | TERM. NO       | 41138-H503      |
| PLATING:       | 503             | PLATING:       | 503             | PLATING:       | 503             | PLATING:       | 503             | PLATING:       | 503             | PLATING:       | 503             |
| COLOR          | GREEN           | COLOR          | GREEN           | COLOR          | GREEN           | COLOR          | GREEN           | COLOR          | GREEN           | COLOR          | GREEN           |
| MATL NO        | ENG NO:         | MATL NO        | ENG NO:         | MATL NO        | ENG NO:         | MATL NO        | ENG NO:         | MATL NO        | ENG NO:         | MATL NO        | ENG NO:         |
|                | A-7720-A02H503B |                | A-7720-B02H503B | 22-45-9022     | A-7720-C02H503B |                | A-7720-D02H503B |                | A-7720-E02H503B |                | A-7720-F02H503B |
|                | A-7720-A03H503B |                | A-7720-B03H503B | 22-45-9032     | A-7720-C03H503B |                | A-7720-D03H503B |                | A-7720-E03H503B |                | A-7720-F03H503B |
|                | A-7720-A04H503B |                | A-7720-B04H503B | 22-45-9042     | A-7720-C04H503B |                | A-7720-D04H503B | 22-45-9045     | A-7720-E04H503B | 22-45-9047     | A-7720-F04H503B |
|                | A-7720-A05H503B |                | A-7720-B05H503B | 22-45-9052     | A-7720-C05H503B |                | A-7720-D05H503B | 22-45-9055     | A-7720-E05H503B | 22-45-9057     | A-7720-F05H503B |
|                | A-7720-A06H503B |                | A-7720-B06H503B | 22-45-9062     | A-7720-C06H503B |                | A-7720-D06H503B | 22-45-9065     | A-7720-E06H503B | 22-45-9067     | A-7720-F06H503B |
|                | A-7720-A07H503B |                | A-7720-B07H503B | 22-45-9072     | A-7720-C07H503B |                | A-7720-D07H503B |                | A-7720-E07H503B | 22-45-9077     | A-7720-F07H503B |
|                | A-7720-A08H503B |                | A-7720-B08H503B | 22-45-9082     | A-7720-C08H503B |                | A-7720-D08H503B |                | A-7720-E08H503B | 22-45-9087     | A-7720-F08H503B |
|                | A-7720-A09H503B |                | A-7720-B09H503B | 22-45-9092     | A-7720-C09H503B |                | A-7720-D09H503B |                | A-7720-E09H503B |                | A-7720-F09H503B |
|                | A-7720-A10H503B |                | A-7720-B10H503B | 22-45-9102     | A-7720-C10H503B |                | A-7720-D10H503B |                | A-7720-E10H503B |                | A-7720-F10H503B |
|                | A-7720-A11H503B |                | A-7720-B11H503B | 22-45-9112     | A-7720-C11H503B |                | A-7720-D11H503B |                | A-7720-E11H503B | 22-45-9117     | A-7720-F11H503B |
|                | A-7720-A12H503B |                | A-7720-B12H503B | 22-45-9122     | A-7720-C12H503B |                | A-7720-D12H503B |                | A-7720-E12H503B |                | A-7720-F12H503B |
|                | A-7720-A13H503B |                | A-7720-B13H503B | 22-45-9132     | A-7720-C13H503B |                | A-7720-D13H503B |                | A-7720-E13H503B |                | A-7720-F13H503B |
|                | A-7720-A14H503B |                | A-7720-B14H503B | 22-45-9142     | A-7720-C14H503B |                | A-7720-D14H503B |                | A-7720-E14H503B |                | A-7720-F14H503B |
|                | A-7720-A15H503B |                | A-7720-B15H503B | 22-45-9152     | A-7720-C15H503B |                | A-7720-D15H503B |                | A-7720-E15H503B |                | A-7720-F15H503B |
|                | A-7720-A16H503B |                | A-7720-B16H503B | 22-45-9162     | A-7720-C16H503B |                | A-7720-D16H503B |                | A-7720-E16H503B |                | A-7720-F16H503B |
|                | A-7720-A17H503B |                | A-7720-B17H503B | 22-45-9172     | A-7720-C17H503B |                | A-7720-D17H503B |                | A-7720-E17H503B |                | A-7720-F17H503B |
|                | A-7720-A18H503B |                | A-7720-B18H503B | 22-45-9182     | A-7720-C18H503B |                | A-7720-D18H503B |                | A-7720-E18H503B |                | A-7720-F18H503B |
|                | A-7720-A19H503B |                | A-7720-B19H503B | 22-45-9192     | A-7720-C19H503B |                | A-7720-D19H503B |                | A-7720-E19H503B |                | A-7720-F19H503B |
|                | A-7720-A20H503B |                | A-7720-B20H503B | 22-45-9202     | A-7720-C20H503B |                | A-7720-D20H503B |                | A-7720-E20H503B |                | A-7720-F20H503B |
|                | A-7720-A21H503B |                | A-7720-B21H503B | 22-45-9212     | A-7720-C21H503B |                | A-7720-D21H503B |                | A-7720-E21H503B |                | A-7720-F21H503B |
|                | A-7720-A22H503B |                | A-7720-B22H503B | 22-45-9222     | A-7720-C22H503B |                | A-7720-D22H503B |                | A-7720-E22H503B |                | A-7720-F22H503B |
|                | A-7720-A23H503B |                | A-7720-B23H503B | 22-45-9232     | A-7720-C23H503B |                | A-7720-D23H503B |                | A-7720-E23H503B |                | A-7720-F23H503B |
|                | A-7720-A24H503B |                | A-7720-B24H503B | 22-45-9242     | A-7720-C24H503B |                | A-7720-D24H503B |                | A-7720-E24H503B |                | A-7720-F24H503B |
|                | A-7720-A25H503B |                | A-7720-B25H503B | 22-45-9252     | A-7720-C25H503B |                | A-7720-D25H503B |                | A-7720-E25H503B |                | A-7720-F25H503B |
|                | A-7720-A26H503B |                | A-7720-B26H503B | 22-45-9262     | A-7720-C26H503B |                | A-7720-D26H503B |                | A-7720-E26H503B |                | A-7720-F26H503B |
|                | A-7720-A27H503B |                | A-7720-B27H503B | 22-45-9272     | A-7720-C27H503B |                | A-7720-D27H503B |                | A-7720-E27H503B |                | A-7720-F27H503B |
|                | A-7720-A28H503B |                | A-7720-B28H503B | 22-45-9282     | A-7720-C28H503B |                | A-7720-D28H503B |                | A-7720-E28H503B |                | A-7720-F28H503B |



|  |   |  |                               |
|--|---|--|-------------------------------|
| REVISION:<br><b>BA</b>                 | ECR/ECN INFORMATION:<br>EC No.: UCP2009-2291<br>DATE: 4/17/2009 | TITLE:<br><b>KK 100 IDT CONNECTOR ASSEMBLY</b> | SHEET No.<br><b>10</b>        |
| DOCUMENT NUMBER:<br><b>SD-7720-001</b> | CREATED / REVISED BY:<br><b>MKIPPER</b>                         | CHECKED BY:<br><b>SSOUSEK</b>                  | APPROVED BY:<br><b>FSMITH</b> |

| A-7720-ANHP909C |                  | A-7720-BNHP909C |                  | A-7720-CNHP909C |                  | A-7720-DNHP909C |                  | A-7720-ENHP909C |                  | A-7720-FNHP909C |                  |
|-----------------|------------------|-----------------|------------------|-----------------|------------------|-----------------|------------------|-----------------|------------------|-----------------|------------------|
| HOUSING         | 7720-AN          | HOUSING         | 7720-BN          | HOUSING         | 7720-CN          | HOUSING         | 7720-DN          | HOUSING         | 7720-EN          | HOUSING         | 7720-FN          |
| TERM. NO        | 41512-HP909      | TERM. NO        | 41512-HP909      | TERM. NO        | 41512-HP909      | TERM. NO        | 41512-HP909      | TERM. NO        | 41512-HP909      | TERM. NO        | 41512-HP909      |
| PLATING:        | P909             | PLATING:        | P909             | PLATING:        | P909             | PLATING:        | P909             | PLATING:        | P909             | PLATING:        | P909             |
| COLOR           | GREEN            | COLOR           | GREEN            | COLOR           | GREEN            | COLOR           | GREEN            | COLOR           | GREEN            | COLOR           | GREEN            |
| MATL NO         | ENG NO:          | MATL NO         | ENG NO:          | MATL NO         | ENG NO:          | MATL NO         | ENG NO:          | MATL NO         | ENG NO:          | MATL NO         | ENG NO:          |
| 22-42-4020      | A-7720-A02HP909C | 22-42-4021      | A-7720-B02HP909C | 22-42-4022      | A-7720-C02HP909C | 22-42-4023      | A-7720-D02HP909C | 22-42-4024      | A-7720-E02HP909C | 22-42-4025      | A-7720-F02HP909C |
| 22-42-4030      | A-7720-A03HP909C | 22-42-4031      | A-7720-B03HP909C | 22-42-4032      | A-7720-C03HP909C | 22-42-4033      | A-7720-D03HP909C | 22-42-4034      | A-7720-E03HP909C | 22-42-4035      | A-7720-F03HP909C |
| 22-42-4040      | A-7720-A04HP909C | 22-42-4041      | A-7720-B04HP909C | 22-42-4042      | A-7720-C04HP909C | 22-42-4043      | A-7720-D04HP909C | 22-42-4044      | A-7720-E04HP909C | 22-42-4045      | A-7720-F04HP909C |
| 22-42-4050      | A-7720-A05HP909C | 22-42-4051      | A-7720-B05HP909C | 22-42-4052      | A-7720-C05HP909C | 22-42-4053      | A-7720-D05HP909C | 22-42-4054      | A-7720-E05HP909C | 22-42-4055      | A-7720-F05HP909C |
| 22-42-4060      | A-7720-A06HP909C | 22-42-4061      | A-7720-B06HP909C | 22-42-4062      | A-7720-C06HP909C | 22-42-4063      | A-7720-D06HP909C | 22-42-4064      | A-7720-E06HP909C | 22-42-4065      | A-7720-F06HP909C |
| 22-42-4070      | A-7720-A07HP909C | 22-42-4071      | A-7720-B07HP909C | 22-42-4072      | A-7720-C07HP909C | 22-42-4073      | A-7720-D07HP909C | 22-42-4074      | A-7720-E07HP909C | 22-42-4075      | A-7720-F07HP909C |
| 22-42-4080      | A-7720-A08HP909C | 22-42-4081      | A-7720-B08HP909C | 22-42-4082      | A-7720-C08HP909C | 22-42-4083      | A-7720-D08HP909C | 22-42-4084      | A-7720-E08HP909C | 22-42-4085      | A-7720-F08HP909C |
| 22-42-4090      | A-7720-A09HP909C | 22-42-4091      | A-7720-B09HP909C | 22-42-4092      | A-7720-C09HP909C | 22-42-4093      | A-7720-D09HP909C | 22-42-4094      | A-7720-E09HP909C | 22-42-4095      | A-7720-F09HP909C |
| 22-42-4100      | A-7720-A10HP909C | 22-42-4101      | A-7720-B10HP909C | 22-42-4102      | A-7720-C10HP909C | 22-42-4103      | A-7720-D10HP909C | 22-42-4104      | A-7720-E10HP909C | 22-42-4105      | A-7720-F10HP909C |
| 22-42-4110      | A-7720-A11HP909C | 22-42-4111      | A-7720-B11HP909C | 22-42-4112      | A-7720-C11HP909C | 22-42-4113      | A-7720-D11HP909C | 22-42-4114      | A-7720-E11HP909C | 22-42-4115      | A-7720-F11HP909C |
| 22-42-4120      | A-7720-A12HP909C | 22-42-4121      | A-7720-B12HP909C | 22-42-4122      | A-7720-C12HP909C | 22-42-4123      | A-7720-D12HP909C | 22-42-4124      | A-7720-E12HP909C | 22-42-4125      | A-7720-F12HP909C |
| 22-42-4130      | A-7720-A13HP909C | 22-42-4131      | A-7720-B13HP909C | 22-42-4132      | A-7720-C13HP909C | 22-42-4133      | A-7720-D13HP909C | 22-42-4134      | A-7720-E13HP909C | 22-42-4135      | A-7720-F13HP909C |
| 22-42-4140      | A-7720-A14HP909C | 22-42-4141      | A-7720-B14HP909C | 22-42-4142      | A-7720-C14HP909C | 22-42-4143      | A-7720-D14HP909C | 22-42-4144      | A-7720-E14HP909C | 22-42-4145      | A-7720-F14HP909C |
| 22-42-4150      | A-7720-A15HP909C | 22-42-4151      | A-7720-B15HP909C | 22-42-4152      | A-7720-C15HP909C | 22-42-4153      | A-7720-D15HP909C | 22-42-4154      | A-7720-E15HP909C | 22-42-4155      | A-7720-F15HP909C |
| 22-42-4160      | A-7720-A16HP909C | 22-42-4161      | A-7720-B16HP909C | 22-42-4162      | A-7720-C16HP909C | 22-42-4163      | A-7720-D16HP909C | 22-42-4164      | A-7720-E16HP909C | 22-42-4165      | A-7720-F16HP909C |
| 22-42-4170      | A-7720-A17HP909C | 22-42-4171      | A-7720-B17HP909C | 22-42-4172      | A-7720-C17HP909C | 22-42-4173      | A-7720-D17HP909C | 22-42-4174      | A-7720-E17HP909C | 22-42-4175      | A-7720-F17HP909C |
| 22-42-4180      | A-7720-A18HP909C | 22-42-4181      | A-7720-B18HP909C | 22-42-4182      | A-7720-C18HP909C | 22-42-4183      | A-7720-D18HP909C | 22-42-4184      | A-7720-E18HP909C | 22-42-4185      | A-7720-F18HP909C |
| 22-42-4190      | A-7720-A19HP909C | 22-42-4191      | A-7720-B19HP909C | 22-42-4192      | A-7720-C19HP909C | 22-42-4193      | A-7720-D19HP909C | 22-42-4194      | A-7720-E19HP909C | 22-42-4195      | A-7720-F19HP909C |
| 22-42-4200      | A-7720-A20HP909C | 22-42-4201      | A-7720-B20HP909C | 22-42-4202      | A-7720-C20HP909C | 22-42-4203      | A-7720-D20HP909C | 22-42-4204      | A-7720-E20HP909C | 22-42-4205      | A-7720-F20HP909C |
| 22-42-4210      | A-7720-A21HP909C | 22-42-4211      | A-7720-B21HP909C | 22-42-4212      | A-7720-C21HP909C | 22-42-4213      | A-7720-D21HP909C | 22-42-4214      | A-7720-E21HP909C | 22-42-4215      | A-7720-F21HP909C |
| 22-42-4220      | A-7720-A22HP909C | 22-42-4221      | A-7720-B22HP909C | 22-42-4222      | A-7720-C22HP909C | 22-42-4223      | A-7720-D22HP909C | 22-42-4224      | A-7720-E22HP909C | 22-42-4225      | A-7720-F22HP909C |
| 22-42-4230      | A-7720-A23HP909C | 22-42-4231      | A-7720-B23HP909C | 22-42-4232      | A-7720-C23HP909C | 22-42-4233      | A-7720-D23HP909C | 22-42-4234      | A-7720-E23HP909C | 22-42-4235      | A-7720-F23HP909C |
| 22-42-4240      | A-7720-A24HP909C | 22-42-4241      | A-7720-B24HP909C | 22-42-4242      | A-7720-C24HP909C | 22-42-4243      | A-7720-D24HP909C | 22-42-4244      | A-7720-E24HP909C | 22-42-4245      | A-7720-F24HP909C |
| 22-42-4250      | A-7720-A25HP909C | 22-42-4251      | A-7720-B25HP909C | 22-42-4252      | A-7720-C25HP909C | 22-42-4253      | A-7720-D25HP909C | 22-42-4254      | A-7720-E25HP909C | 22-42-4255      | A-7720-F25HP909C |
| 22-42-4260      | A-7720-A26HP909C | 22-42-4261      | A-7720-B26HP909C | 22-42-4262      | A-7720-C26HP909C | 22-42-4263      | A-7720-D26HP909C | 22-42-4264      | A-7720-E26HP909C | 22-42-4265      | A-7720-F26HP909C |
| 22-42-4270      | A-7720-A27HP909C | 22-42-4271      | A-7720-B27HP909C | 22-42-4272      | A-7720-C27HP909C | 22-42-4273      | A-7720-D27HP909C | 22-42-4274      | A-7720-E27HP909C | 22-42-4275      | A-7720-F27HP909C |
| 22-42-4280      | A-7720-A28HP909C | 22-42-4281      | A-7720-B28HP909C | 22-42-4282      | A-7720-C28HP909C | 22-42-4283      | A-7720-D28HP909C | 22-42-4284      | A-7720-E28HP909C | 22-42-4285      | A-7720-F28HP909C |

|                               |  |  |   |                               |
|-------------------------------|--|--|---|-------------------------------|
| <b>REVISION:</b><br><b>BA</b> |  | <b>ECR/ECN INFORMATION:</b><br>EC No.: UCP2009-2291<br>DATE: 4/17/2009 | <b>TITLE:</b><br><b>KK 100 IDT CONNECTOR ASSEMBLY</b> | <b>SHEET No.</b><br><b>11</b> |
|-------------------------------|--|--|---|-------------------------------|

|   |  |                                      |                                      |
|---|--|--------------------------------------|--------------------------------------|
| <b>DOCUMENT NUMBER:</b><br><b>SD-7720-001</b> | <b>CREATED / REVISED BY:</b><br><b>MKIPPER</b> | <b>CHECKED BY:</b><br><b>SSOUSEK</b> | <b>APPROVED BY:</b><br><b>FSMITH</b> |
|---|--|--------------------------------------|--------------------------------------|

| A-7720-ANFP909C |                  | A-7720-BNFP909C |                  | A-7720-CNFP909C |                  | A-7720-DNFP909C |                  | A-7720-ENFP909C |                  | A-7720-FNFP909C |                  |
|-----------------|------------------|-----------------|------------------|-----------------|------------------|-----------------|------------------|-----------------|------------------|-----------------|------------------|
| HOUSING         | 7720-AN          | HOUSING         | 7720-BN          | HOUSING         | 7720-CN          | HOUSING         | 7720-DN          | HOUSING         | 7720-EN          | HOUSING         | 7720-FN          |
| TERM. NO        | 41512-FP909      | TERM. NO        | 41512-FP909      | TERM. NO        | 41512-FP909      | TERM. NO        | 41512-FP909      | TERM. NO        | 41512-FP909      | TERM. NO        | 41512-FP909      |
| PLATING:        | P909             | PLATING:        | P909             | PLATING:        | P909             | PLATING:        | P909             | PLATING:        | P909             | PLATING:        | P909             |
| COLOR           | BLACK            | COLOR           | BLACK            | COLOR           | BLACK            | COLOR           | BLACK            | COLOR           | BLACK            | COLOR           | BLACK            |
| MATL NO         | ENG NO:          | MATL NO         | ENG NO:          | MATL NO         | ENG NO:          | MATL NO         | ENG NO:          | MATL NO         | ENG NO:          | MATL NO         | ENG NO:          |
| 22-42-5020      | A-7720-A02FP909C | 22-42-5021      | A-7720-B02FP909C | 22-42-5022      | A-7720-C02FP909C | 22-42-5023      | A-7720-D02FP909C | 22-42-5024      | A-7720-E02FP909C | 22-42-5025      | A-7720-F02FP909C |
| 22-42-5030      | A-7720-A03FP909C | 22-42-5031      | A-7720-B03FP909C | 22-42-5032      | A-7720-C03FP909C | 22-42-5033      | A-7720-D03FP909C | 22-42-5034      | A-7720-E03FP909C | 22-42-5035      | A-7720-F03FP909C |
| 22-42-5040      | A-7720-A04FP909C | 22-42-5041      | A-7720-B04FP909C | 22-42-5042      | A-7720-C04FP909C | 22-42-5043      | A-7720-D04FP909C | 22-42-5044      | A-7720-E04FP909C | 22-42-5045      | A-7720-F04FP909C |
| 22-42-5050      | A-7720-A05FP909C | 22-42-5051      | A-7720-B05FP909C | 22-42-5052      | A-7720-C05FP909C | 22-42-5053      | A-7720-D05FP909C | 22-42-5054      | A-7720-E05FP909C | 22-42-5055      | A-7720-F05FP909C |
| 22-42-5060      | A-7720-A06FP909C | 22-42-5061      | A-7720-B06FP909C | 22-42-5062      | A-7720-C06FP909C | 22-42-5063      | A-7720-D06FP909C | 22-42-5064      | A-7720-E06FP909C | 22-42-5065      | A-7720-F06FP909C |
| 22-42-5070      | A-7720-A07FP909C | 22-42-5071      | A-7720-B07FP909C | 22-42-5072      | A-7720-C07FP909C | 22-42-5073      | A-7720-D07FP909C | 22-42-5074      | A-7720-E07FP909C | 22-42-5075      | A-7720-F07FP909C |
| 22-42-5080      | A-7720-A08FP909C | 22-42-5081      | A-7720-B08FP909C | 22-42-5082      | A-7720-C08FP909C | 22-42-5083      | A-7720-D08FP909C | 22-42-5084      | A-7720-E08FP909C | 22-42-5085      | A-7720-F08FP909C |
| 22-42-5090      | A-7720-A09FP909C | 22-42-5091      | A-7720-B09FP909C | 22-42-5092      | A-7720-C09FP909C | 22-42-5093      | A-7720-D09FP909C | 22-42-5094      | A-7720-E09FP909C | 22-42-5095      | A-7720-F09FP909C |
| 22-42-5100      | A-7720-A10FP909C | 22-42-5101      | A-7720-B10FP909C | 22-42-5102      | A-7720-C10FP909C | 22-42-5103      | A-7720-D10FP909C | 22-42-5104      | A-7720-E10FP909C | 22-42-5105      | A-7720-F10FP909C |
| 22-42-5110      | A-7720-A11FP909C | 22-42-5111      | A-7720-B11FP909C | 22-42-5112      | A-7720-C11FP909C | 22-42-5113      | A-7720-D11FP909C | 22-42-5114      | A-7720-E11FP909C | 22-42-5115      | A-7720-F11FP909C |
| 22-42-5120      | A-7720-A12FP909C | 22-42-5121      | A-7720-B12FP909C | 22-42-5122      | A-7720-C12FP909C | 22-42-5123      | A-7720-D12FP909C | 22-42-5124      | A-7720-E12FP909C | 22-42-5125      | A-7720-F12FP909C |
| 22-42-5130      | A-7720-A13FP909C | 22-42-5131      | A-7720-B13FP909C | 22-42-5132      | A-7720-C13FP909C | 22-42-5133      | A-7720-D13FP909C | 22-42-5134      | A-7720-E13FP909C | 22-42-5135      | A-7720-F13FP909C |
| 22-42-5140      | A-7720-A14FP909C | 22-42-5141      | A-7720-B14FP909C | 22-42-5142      | A-7720-C14FP909C | 22-42-5143      | A-7720-D14FP909C | 22-42-5144      | A-7720-E14FP909C | 22-42-5145      | A-7720-F14FP909C |
| 22-42-5150      | A-7720-A15FP909C | 22-42-5151      | A-7720-B15FP909C | 22-42-5152      | A-7720-C15FP909C | 22-42-5153      | A-7720-D15FP909C | 22-42-5154      | A-7720-E15FP909C | 22-42-5155      | A-7720-F15FP909C |
| 22-42-5160      | A-7720-A16FP909C | 22-42-5161      | A-7720-B16FP909C | 22-42-5162      | A-7720-C16FP909C | 22-42-5163      | A-7720-D16FP909C | 22-42-5164      | A-7720-E16FP909C | 22-42-5165      | A-7720-F16FP909C |
| 22-42-5170      | A-7720-A17FP909C | 22-42-5171      | A-7720-B17FP909C | 22-42-5172      | A-7720-C17FP909C | 22-42-5173      | A-7720-D17FP909C | 22-42-5174      | A-7720-E17FP909C | 22-42-5175      | A-7720-F17FP909C |
| 22-42-5180      | A-7720-A18FP909C | 22-42-5181      | A-7720-B18FP909C | 22-42-5182      | A-7720-C18FP909C | 22-42-5183      | A-7720-D18FP909C | 22-42-5184      | A-7720-E18FP909C | 22-42-5185      | A-7720-F18FP909C |
| 22-42-5190      | A-7720-A19FP909C | 22-42-5191      | A-7720-B19FP909C | 22-42-5192      | A-7720-C19FP909C | 22-42-5193      | A-7720-D19FP909C | 22-42-5194      | A-7720-E19FP909C | 22-42-5195      | A-7720-F19FP909C |
| 22-42-5200      | A-7720-A20FP909C | 22-42-5201      | A-7720-B20FP909C | 22-42-5202      | A-7720-C20FP909C | 22-42-5203      | A-7720-D20FP909C | 22-42-5204      | A-7720-E20FP909C | 22-42-5205      | A-7720-F20FP909C |
| 22-42-5210      | A-7720-A21FP909C | 22-42-5211      | A-7720-B21FP909C | 22-42-5212      | A-7720-C21FP909C | 22-42-5213      | A-7720-D21FP909C | 22-42-5214      | A-7720-E21FP909C | 22-42-5215      | A-7720-F21FP909C |
| 22-42-5220      | A-7720-A22FP909C | 22-42-5221      | A-7720-B22FP909C | 22-42-5222      | A-7720-C22FP909C | 22-42-5223      | A-7720-D22FP909C | 22-42-5224      | A-7720-E22FP909C | 22-42-5225      | A-7720-F22FP909C |
| 22-42-5230      | A-7720-A23FP909C | 22-42-5231      | A-7720-B23FP909C | 22-42-5232      | A-7720-C23FP909C | 22-42-5233      | A-7720-D23FP909C | 22-42-5234      | A-7720-E23FP909C | 22-42-5235      | A-7720-F23FP909C |
| 22-42-5240      | A-7720-A24FP909C | 22-42-5241      | A-7720-B24FP909C | 22-42-5242      | A-7720-C24FP909C | 22-42-5243      | A-7720-D24FP909C | 22-42-5244      | A-7720-E24FP909C | 22-42-5245      | A-7720-F24FP909C |
| 22-42-5250      | A-7720-A25FP909C | 22-42-5251      | A-7720-B25FP909C | 22-42-5252      | A-7720-C25FP909C | 22-42-5253      | A-7720-D25FP909C | 22-42-5254      | A-7720-E25FP909C | 22-42-5255      | A-7720-F25FP909C |
| 22-42-5260      | A-7720-A26FP909C | 22-42-5261      | A-7720-B26FP909C | 22-42-5262      | A-7720-C26FP909C | 22-42-5263      | A-7720-D26FP909C | 22-42-5264      | A-7720-E26FP909C | 22-42-5265      | A-7720-F26FP909C |
| 22-42-5270      | A-7720-A27FP909C | 22-42-5271      | A-7720-B27FP909C | 22-42-5272      | A-7720-C27FP909C | 22-42-5273      | A-7720-D27FP909C | 22-42-5274      | A-7720-E27FP909C | 22-42-5275      | A-7720-F27FP909C |
| 22-42-5280      | A-7720-A28FP909C | 22-42-5281      | A-7720-B28FP909C | 22-42-5282      | A-7720-C28FP909C | 22-42-5283      | A-7720-D28FP909C | 22-42-5284      | A-7720-E28FP909C | 22-42-5285      | A-7720-F28FP909C |

|  |  |  |  |  |  |  |  |  |  |  |  |
|--|--|--|--|--|--|--|--|--|--|--|--|
| <p><b>REVISION: BA</b></p> <p><b>ECR/ECN INFORMATION:</b><br/> EC No.: UCP2009-2291<br/> DATE: 4/17/2009</p> <p><b>TITLE:</b><br/> <b>KK 100 IDT CONNECTOR ASSEMBLY</b></p> <p><b>SHEET No.</b><br/> <b>12</b></p> |  |  |  |  |  |  |  |  |  |  |  |
|--|--|--|--|--|--|--|--|--|--|--|--|

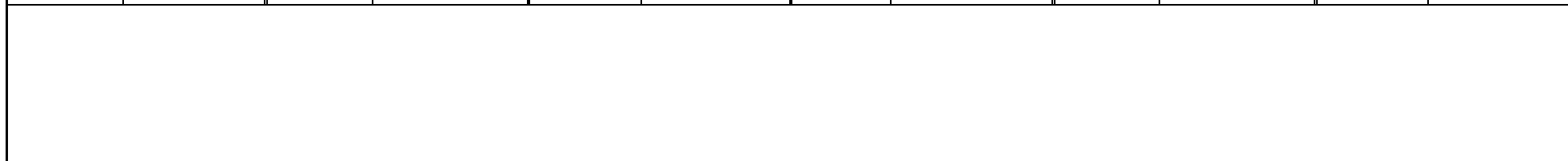
|   |  |  |  |  |  |  |  |                                      |  |  |  |                                      |  |  |  |
|---|--|--|--|--|--|--|--|--------------------------------------|--|--|--|--------------------------------------|--|--|--|
| <b>DOCUMENT NUMBER:</b><br><b>SD-7720-001</b> |  |  |  | <b>CREATED / REVISED BY:</b><br><b>MKIPPER</b> |  |  |  | <b>CHECKED BY:</b><br><b>SSOUSEK</b> |  |  |  | <b>APPROVED BY:</b><br><b>FSMITH</b> |  |  |  |
|---|--|--|--|--|--|--|--|--------------------------------------|--|--|--|--------------------------------------|--|--|--|

| A-7720-WANFP909C |                   | A-7720-WBNFP909C |                   | A-7720-WCNFP909C |                   | A-7720-WDNFP909C |                   | A-7720-WENFP909C |                   | A-7720-WFNFP909C |                   |
|------------------|-------------------|------------------|-------------------|------------------|-------------------|------------------|-------------------|------------------|-------------------|------------------|-------------------|
| HOUSING          | 7720-WAN          | HOUSING          | 7720-WBN          | HOUSING          | 7720-WCN          | HOUSING          | 7720-WDN          | HOUSING          | 7720-WEN          | HOUSING          | 7720-WFN          |
| TERM. NO         | 41512-FP909       | TERM. NO         | 41512-FP909       | TERM. NO         | 41512-FP909       | TERM. NO         | 41512-FP909       | TERM. NO         | 41512-FP909       | TERM. NO         | 41512-FP909       |
| PLATING:         | P909              | PLATING:         | P909              | PLATING:         | P909              | PLATING:         | P909              | PLATING:         | P909              | PLATING:         | P909              |
| COLOR            | BLACK             | COLOR            | BLACK             | COLOR            | BLACK             | COLOR            | BLACK             | COLOR            | BLACK             | COLOR            | BLACK             |
| MATL NO          | ENG NO:           | MATL NO          | ENG NO:           | MATL NO          | ENG NO:           | MATL NO          | ENG NO:           | MATL NO          | ENG NO:           | MATL NO          | ENG NO:           |
| 22-42-7020       | A-7720-WA02FP909C | 22-42-7021       | A-7720-WB02FP909C | 22-42-7022       | A-7720-WC02FP909C | 22-42-7023       | A-7720-WD02FP909C | 22-42-7024       | A-7720-WE02FP909C | 22-42-7025       | A-7720-WF02FP909C |
| 22-42-7030       | A-7720-WA03FP909C | 22-42-7031       | A-7720-WB03FP909C | 22-42-7032       | A-7720-WC03FP909C | 22-42-7033       | A-7720-WD03FP909C | 22-42-7034       | A-7720-WE03FP909C | 22-42-7035       | A-7720-WF03FP909C |
| 22-42-7040       | A-7720-WA04FP909C | 22-42-7041       | A-7720-WB04FP909C | 22-42-7042       | A-7720-WC04FP909C | 22-42-7043       | A-7720-WD04FP909C | 22-42-7044       | A-7720-WE04FP909C | 22-42-7045       | A-7720-WF04FP909C |
| 22-42-7050       | A-7720-WA05FP909C | 22-42-7051       | A-7720-WB05FP909C | 22-42-7052       | A-7720-WC05FP909C | 22-42-7053       | A-7720-WD05FP909C | 22-42-7054       | A-7720-WE05FP909C | 22-42-7055       | A-7720-WF05FP909C |
| 22-42-7060       | A-7720-WA06FP909C | 22-42-7061       | A-7720-WB06FP909C | 22-42-7062       | A-7720-WC06FP909C | 22-42-7063       | A-7720-WD06FP909C | 22-42-7064       | A-7720-WE06FP909C | 22-42-7065       | A-7720-WF06FP909C |
| 22-42-7070       | A-7720-WA07FP909C | 22-42-7071       | A-7720-WB07FP909C | 22-42-7072       | A-7720-WC07FP909C | 22-42-7073       | A-7720-WD07FP909C | 22-42-7074       | A-7720-WE07FP909C | 22-42-7075       | A-7720-WF07FP909C |
| 22-42-7080       | A-7720-WA08FP909C | 22-42-7081       | A-7720-WB08FP909C | 22-42-7082       | A-7720-WC08FP909C | 22-42-7083       | A-7720-WD08FP909C | 22-42-7084       | A-7720-WE08FP909C | 22-42-7085       | A-7720-WF08FP909C |
| 22-42-7090       | A-7720-WA09FP909C | 22-42-7091       | A-7720-WB09FP909C | 22-42-7092       | A-7720-WC09FP909C | 22-42-7093       | A-7720-WD09FP909C | 22-42-7094       | A-7720-WE09FP909C | 22-42-7095       | A-7720-WF09FP909C |
| 22-42-7100       | A-7720-WA10FP909C | 22-42-7101       | A-7720-WB10FP909C | 22-42-7102       | A-7720-WC10FP909C | 22-42-7103       | A-7720-WD10FP909C | 22-42-7104       | A-7720-WE10FP909C | 22-42-7105       | A-7720-WF10FP909C |
| 22-42-7110       | A-7720-WA11FP909C | 22-42-7111       | A-7720-WB11FP909C | 22-42-7112       | A-7720-WC11FP909C | 22-42-7113       | A-7720-WD11FP909C | 22-42-7114       | A-7720-WE11FP909C | 22-42-7115       | A-7720-WF11FP909C |
| 22-42-7120       | A-7720-WA12FP909C | 22-42-7121       | A-7720-WB12FP909C | 22-42-7122       | A-7720-WC12FP909C | 22-42-7123       | A-7720-WD12FP909C | 22-42-7124       | A-7720-WE12FP909C | 22-42-7125       | A-7720-WF12FP909C |
| 22-42-7130       | A-7720-WA13FP909C | 22-42-7131       | A-7720-WB13FP909C | 22-42-7132       | A-7720-WC13FP909C | 22-42-7133       | A-7720-WD13FP909C | 22-42-7134       | A-7720-WE13FP909C | 22-42-7135       | A-7720-WF13FP909C |
| 22-42-7140       | A-7720-WA14FP909C | 22-42-7141       | A-7720-WB14FP909C | 22-42-7142       | A-7720-WC14FP909C | 22-42-7143       | A-7720-WD14FP909C | 22-42-7144       | A-7720-WE14FP909C | 22-42-7145       | A-7720-WF14FP909C |
| 22-42-7150       | A-7720-WA15FP909C | 22-42-7151       | A-7720-WB15FP909C | 22-42-7152       | A-7720-WC15FP909C | 22-42-7153       | A-7720-WD15FP909C | 22-42-7154       | A-7720-WE15FP909C | 22-42-7155       | A-7720-WF15FP909C |
| 22-42-7160       | A-7720-WA16FP909C | 22-42-7161       | A-7720-WB16FP909C | 22-42-7162       | A-7720-WC16FP909C | 22-42-7163       | A-7720-WD16FP909C | 22-42-7164       | A-7720-WE16FP909C | 22-42-7165       | A-7720-WF16FP909C |
| 22-42-7170       | A-7720-WA17FP909C | 22-42-7171       | A-7720-WB17FP909C | 22-42-7172       | A-7720-WC17FP909C | 22-42-7173       | A-7720-WD17FP909C | 22-42-7174       | A-7720-WE17FP909C | 22-42-7175       | A-7720-WF17FP909C |
| 22-42-7180       | A-7720-WA18FP909C | 22-42-7181       | A-7720-WB18FP909C | 22-42-7182       | A-7720-WC18FP909C | 22-42-7183       | A-7720-WD18FP909C | 22-42-7184       | A-7720-WE18FP909C | 22-42-7185       | A-7720-WF18FP909C |
| 22-42-7190       | A-7720-WA19FP909C | 22-42-7191       | A-7720-WB19FP909C | 22-42-7192       | A-7720-WC19FP909C | 22-42-7193       | A-7720-WD19FP909C | 22-42-7194       | A-7720-WE19FP909C | 22-42-7195       | A-7720-WF19FP909C |
| 22-42-7200       | A-7720-WA20FP909C | 22-42-7201       | A-7720-WB20FP909C | 22-42-7202       | A-7720-WC20FP909C | 22-42-7203       | A-7720-WD20FP909C | 22-42-7204       | A-7720-WE20FP909C | 22-42-7205       | A-7720-WF20FP909C |
| 22-42-7210       | A-7720-WA21FP909C | 22-42-7211       | A-7720-WB21FP909C | 22-42-7212       | A-7720-WC21FP909C | 22-42-7213       | A-7720-WD21FP909C | 22-42-7214       | A-7720-WE21FP909C | 22-42-7215       | A-7720-WF21FP909C |
| 22-42-7220       | A-7720-WA22FP909C | 22-42-7221       | A-7720-WB22FP909C | 22-42-7222       | A-7720-WC22FP909C | 22-42-7223       | A-7720-WD22FP909C | 22-42-7224       | A-7720-WE22FP909C | 22-42-7225       | A-7720-WF22FP909C |
| 22-42-7230       | A-7720-WA23FP909C | 22-42-7231       | A-7720-WB23FP909C | 22-42-7232       | A-7720-WC23FP909C | 22-42-7233       | A-7720-WD23FP909C | 22-42-7234       | A-7720-WE23FP909C | 22-42-7235       | A-7720-WF23FP909C |
| 22-42-7240       | A-7720-WA24FP909C | 22-42-7241       | A-7720-WB24FP909C | 22-42-7242       | A-7720-WC24FP909C | 22-42-7243       | A-7720-WD24FP909C | 22-42-7244       | A-7720-WE24FP909C | 22-42-7245       | A-7720-WF24FP909C |
| 22-42-7250       | A-7720-WA25FP909C | 22-42-7251       | A-7720-WB25FP909C | 22-42-7252       | A-7720-WC25FP909C | 22-42-7253       | A-7720-WD25FP909C | 22-42-7254       | A-7720-WE25FP909C | 22-42-7255       | A-7720-WF25FP909C |
| 22-42-7260       | A-7720-WA26FP909C | 22-42-7261       | A-7720-WB26FP909C | 22-42-7262       | A-7720-WC26FP909C | 22-42-7263       | A-7720-WD26FP909C | 22-42-7264       | A-7720-WE26FP909C | 22-42-7265       | A-7720-WF26FP909C |
| 22-42-7270       | A-7720-WA27FP909C | 22-42-7271       | A-7720-WB27FP909C | 22-42-7272       | A-7720-WC27FP909C | 22-42-7273       | A-7720-WD27FP909C | 22-42-7274       | A-7720-WE27FP909C | 22-42-7275       | A-7720-WF27FP909C |
| 22-42-7280       | A-7720-WA28FP909C | 22-42-7281       | A-7720-WB28FP909C | 22-42-7282       | A-7720-WC28FP909C | 22-42-7283       | A-7720-WD28FP909C | 22-42-7284       | A-7720-WE28FP909C | 22-42-7285       | A-7720-WF28FP909C |

|  |  |  |  |  |  |  |  |  |  |  |  |
|--|--|--|--|--|--|--|--|--|--|--|--|
|  |  |  |  |  |  |  |  |  |  |  |  |
|--|--|--|--|--|--|--|--|--|--|--|--|

|                                   |                             |  |   |  |  |  |  |  |  |  |  |
|-----------------------------------|-----------------------------|--|---|--|--|--|--|--|--|--|--|
| <b>REVISION:</b><br><br><b>BA</b> | <b>ECR/ECN INFORMATION:</b> |  | <b>TITLE:</b><br><br><b>KK 100 IDT CONNECTOR ASSEMBLY</b> |  |  |  |  |  |  | <b>SHEET No.</b>                         |  |
|                                   | EC No.: UCP2009-2291        |  |   |  |  |  |  |  |  | <b>13</b>                                |  |
| <b>DATE:</b> 4/17/2009            |                             |  | <b>DOCUMENT NUMBER:</b><br><br><b>SD-7720-001</b>         |  |  | <b>CREATED / REVISED BY:</b><br><br><b>MKIPPER</b> |  | <b>CHECKED BY:</b><br><br><b>SSOUSEK</b> |  | <b>APPROVED BY:</b><br><br><b>FSMITH</b> |  |

| A-7720-ANA228A |                 | A-7720-BNA228A |                 | A-7720-CNA228A |                 | A-7720-DNA228A |                 | A-7720-ENA228A |                 | A-7720-FNA228A |                 |
|----------------|-----------------|----------------|-----------------|----------------|-----------------|----------------|-----------------|----------------|-----------------|----------------|-----------------|
| HOUSING        | 7720-AN         | HOUSING        | 7720-BN         | HOUSING        | 7720-CN         | HOUSING        | 7720-DN         | HOUSING        | 7720-EN         | HOUSING        | 7720-FN         |
| TERM. NO       | 7691-A228       | TERM. NO       | 7691-A228       | TERM. NO       | 7691-A228       | TERM. NO       | 7691-A228       | TERM. NO       | 7691-A228       | TERM. NO       | 7691-A228       |
| PLATING:       | 228             | PLATING:       | 228             | PLATING:       | 228             | PLATING:       | 228             | PLATING:       | 228             | PLATING:       | 228             |
| COLOR          | BROWN           | COLOR          | BROWN           | COLOR          | BROWN           | COLOR          | BROWN           | COLOR          | BROWN           | COLOR          | BROWN           |
| MATL NO        | ENG NO:         | MATL NO        | ENG NO:         | MATL NO        | ENG NO:         | MATL NO        | ENG NO:         | MATL NO        | ENG NO:         | MATL NO        | ENG NO:         |
|                | A-7720-A02A228A |                | A-7720-B02A228A | 22-45-9021     | A-7720-C02A228A | 22-45-9020     | A-7720-D02A228A | 22-45-9024     | A-7720-E02A228A | 22-45-9029     | A-7720-F02A228A |
|                | A-7720-A03A228A |                | A-7720-B03A228A | 22-45-9031     | A-7720-C03A228A | 22-45-9030     | A-7720-D03A228A | 22-45-9034     | A-7720-E03A228A | 22-45-9039     | A-7720-F03A228A |
|                | A-7720-A04A228A |                | A-7720-B04A228A | 22-45-9041     | A-7720-C04A228A | 22-45-9040     | A-7720-D04A228A | 22-45-9044     | A-7720-E04A228A | 22-45-9049     | A-7720-F04A228A |
|                | A-7720-A05A228A |                | A-7720-B05A228A | 22-45-9051     | A-7720-C05A228A | 22-45-9050     | A-7720-D05A228A | 22-45-9054     | A-7720-E05A228A | 22-45-9059     | A-7720-F05A228A |
|                | A-7720-A06A228A |                | A-7720-B06A228A | 22-45-9061     | A-7720-C06A228A | 22-45-9060     | A-7720-D06A228A | 22-45-9064     | A-7720-E06A228A | 22-45-9069     | A-7720-F06A228A |
|                | A-7720-A07A228A |                | A-7720-B07A228A | 22-45-9071     | A-7720-C07A228A | 22-45-9070     | A-7720-D07A228A | 22-45-9074     | A-7720-E07A228A | 22-45-9079     | A-7720-F07A228A |
|                | A-7720-A08A228A |                | A-7720-B08A228A | 22-45-9081     | A-7720-C08A228A | 22-45-9080     | A-7720-D08A228A | 22-45-9084     | A-7720-E08A228A | 22-45-9089     | A-7720-F08A228A |
|                | A-7720-A09A228A |                | A-7720-B09A228A | 22-45-9091     | A-7720-C09A228A | 22-45-9090     | A-7720-D09A228A | 22-45-9094     | A-7720-E09A228A | 22-45-9099     | A-7720-F09A228A |
|                | A-7720-A10A228A |                | A-7720-B10A228A | 22-45-9101     | A-7720-C10A228A | 22-45-9100     | A-7720-D10A228A | 22-45-9104     | A-7720-E10A228A | 22-45-9109     | A-7720-F10A228A |
|                | A-7720-A11A228A |                | A-7720-B11A228A | 22-45-9111     | A-7720-C11A228A | 22-45-9110     | A-7720-D11A228A | 22-45-9114     | A-7720-E11A228A | 22-45-9119     | A-7720-F11A228A |
|                | A-7720-A12A228A |                | A-7720-B12A228A | 22-45-9121     | A-7720-C12A228A | 22-45-9120     | A-7720-D12A228A | 22-45-9124     | A-7720-E12A228A | 22-45-9129     | A-7720-F12A228A |
|                | A-7720-A13A228A |                | A-7720-B13A228A | 22-45-9131     | A-7720-C13A228A | 22-45-9130     | A-7720-D13A228A | 22-45-9134     | A-7720-E13A228A | 22-45-9139     | A-7720-F13A228A |
|                | A-7720-A14A228A |                | A-7720-B14A228A | 22-45-9141     | A-7720-C14A228A | 22-45-9140     | A-7720-D14A228A | 22-45-9144     | A-7720-E14A228A | 22-45-9149     | A-7720-F14A228A |
|                | A-7720-A15A228A |                | A-7720-B15A228A | 22-45-9151     | A-7720-C15A228A | 22-45-9150     | A-7720-D15A228A | 22-45-9154     | A-7720-E15A228A | 22-45-9159     | A-7720-F15A228A |
|                | A-7720-A16A228A |                | A-7720-B16A228A | 22-45-9161     | A-7720-C16A228A | 22-45-9160     | A-7720-D16A228A | 22-45-9164     | A-7720-E16A228A | 22-45-9169     | A-7720-F16A228A |
|                | A-7720-A17A228A |                | A-7720-B17A228A | 22-45-9171     | A-7720-C17A228A | 22-45-9170     | A-7720-D17A228A | 22-45-9174     | A-7720-E17A228A | 22-45-9179     | A-7720-F17A228A |
|                | A-7720-A18A228A |                | A-7720-B18A228A | 22-45-9181     | A-7720-C18A228A | 22-45-9180     | A-7720-D18A228A | 22-45-9184     | A-7720-E18A228A | 22-45-9189     | A-7720-F18A228A |
|                | A-7720-A19A228A |                | A-7720-B19A228A | 22-45-9191     | A-7720-C19A228A | 22-45-9190     | A-7720-D19A228A | 22-45-9194     | A-7720-E19A228A | 22-45-9199     | A-7720-F19A228A |
|                | A-7720-A20A228A |                | A-7720-B20A228A | 22-45-9201     | A-7720-C20A228A | 22-45-9200     | A-7720-D20A228A | 22-45-9204     | A-7720-E20A228A | 22-45-9209     | A-7720-F20A228A |
|                | A-7720-A21A228A |                | A-7720-B21A228A | 22-45-9211     | A-7720-C21A228A | 22-45-9210     | A-7720-D21A228A | 22-45-9214     | A-7720-E21A228A | 22-45-9219     | A-7720-F21A228A |
|                | A-7720-A22A228A |                | A-7720-B22A228A | 22-45-9221     | A-7720-C22A228A | 22-45-9220     | A-7720-D22A228A | 22-45-9224     | A-7720-E22A228A | 22-45-9229     | A-7720-F22A228A |
|                | A-7720-A23A228A |                | A-7720-B23A228A | 22-45-9231     | A-7720-C23A228A | 22-45-9230     | A-7720-D23A228A | 22-45-9234     | A-7720-E23A228A | 22-45-9239     | A-7720-F23A228A |
|                | A-7720-A24A228A |                | A-7720-B24A228A | 22-45-9241     | A-7720-C24A228A | 22-45-9240     | A-7720-D24A228A | 22-45-9244     | A-7720-E24A228A | 22-45-9249     | A-7720-F24A228A |
|                | A-7720-A25A228A |                | A-7720-B25A228A | 22-45-9251     | A-7720-C25A228A | 22-45-9250     | A-7720-D25A228A | 22-45-9254     | A-7720-E25A228A | 22-45-9259     | A-7720-F25A228A |
|                | A-7720-A26A228A |                | A-7720-B26A228A | 22-45-9261     | A-7720-C26A228A | 22-45-9260     | A-7720-D26A228A | 22-45-9264     | A-7720-E26A228A | 22-45-9269     | A-7720-F26A228A |
|                | A-7720-A27A228A |                | A-7720-B27A228A | 22-45-9271     | A-7720-C27A228A | 22-45-9270     | A-7720-D27A228A | 22-45-9274     | A-7720-E27A228A | 22-45-9279     | A-7720-F27A228A |
|                | A-7720-A28A228A |                | A-7720-B28A228A | 22-45-9281     | A-7720-C28A228A | 22-45-9280     | A-7720-D28A228A | 22-45-9284     | A-7720-E28A228A | 22-45-9289     | A-7720-F28A228A |



|   |  |   |                                      |
|---|--|---|--------------------------------------|
| <b>REVISION:</b><br><b>BA</b>                 | <b>ECR/ECN INFORMATION:</b><br>EC No.: UCP2009-2291<br>DATE: 4/17/2009 | <b>TITLE:</b><br><b>KK 100 IDT CONNECTOR ASSEMBLY</b> | <b>SHEET No.</b><br><b>14</b>        |
| <b>DOCUMENT NUMBER:</b><br><b>SD-7720-001</b> |  | <b>CREATED / REVISED BY:</b><br><b>MKIPPER</b>        | <b>CHECKED BY:</b><br><b>SSOUSEK</b> |
|   |  | <b>APPROVED BY:</b><br><b>FSMITH</b>                  |                                      |

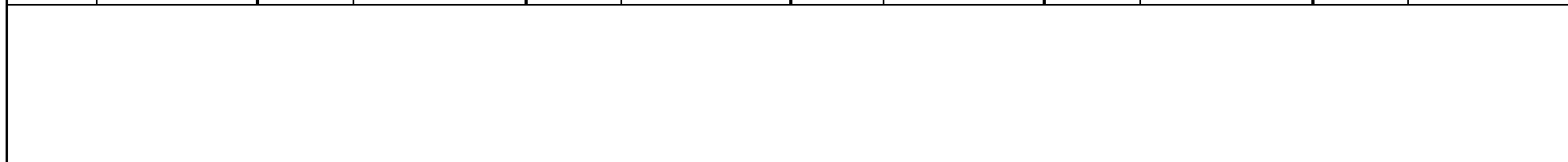


| A-7720-ANH208B |                 | A-7720-BNH208B |                 | A-7720-CNH208B |                 | A-7720-DNH208B |                 | A-7720-ENH208B |                 | A-7720-FNH208B |                 |
|----------------|-----------------|----------------|-----------------|----------------|-----------------|----------------|-----------------|----------------|-----------------|----------------|-----------------|
| HOUSING        | 7720-AN         | HOUSING        | 7720-BN         | HOUSING        | 7720-CN         | HOUSING        | 7720-DN         | HOUSING        | 7720-EN         | HOUSING        | 7720-FN         |
| TERM. NO       | 41138-H208      | TERM. NO       | 41138-H208      | TERM. NO       | 41138-H208      | TERM. NO       | 41138-H208      | TERM. NO       | 41138-H208      | TERM. NO       | 41138-H208      |
| PLATING:       | 208             | PLATING:       | 208             | PLATING:       | 208             | PLATING:       | 208             | PLATING:       | 208             | PLATING:       | 208             |
| COLOR          | GREEN           | COLOR          | GREEN           | COLOR          | GREEN           | COLOR          | GREEN           | COLOR          | GREEN           | COLOR          | GREEN           |
| MATL NO        | ENG NO:         | MATL NO        | ENG NO:         | MATL NO        | ENG NO:         | MATL NO        | ENG NO:         | MATL NO        | ENG NO:         | MATL NO        | ENG NO:         |
|                | A-7720-A02H208B |                | A-7720-B02H208B | 22-45-5023     | A-7720-C02H208B |                | A-7720-D02H208B |                | A-7720-E02H208B | 22-45-9028     | A-7720-F02H208B |
|                | A-7720-A03H208B |                | A-7720-B03H208B | 22-45-5033     | A-7720-C03H208B |                | A-7720-D03H208B |                | A-7720-E03H208B | 22-45-9038     | A-7720-F03H208B |
|                | A-7720-A04H208B |                | A-7720-B04H208B | 22-45-5043     | A-7720-C04H208B |                | A-7720-D04H208B |                | A-7720-E04H208B | 22-45-9048     | A-7720-F04H208B |
|                | A-7720-A05H208B |                | A-7720-B05H208B | 22-45-5053     | A-7720-C05H208B |                | A-7720-D05H208B |                | A-7720-E05H208B | 22-45-9058     | A-7720-F05H208B |
|                | A-7720-A06H208B |                | A-7720-B06H208B | 22-45-5063     | A-7720-C06H208B |                | A-7720-D06H208B |                | A-7720-E06H208B | 22-45-9068     | A-7720-F06H208B |
|                | A-7720-A07H208B |                | A-7720-B07H208B | 22-45-5073     | A-7720-C07H208B |                | A-7720-D07H208B |                | A-7720-E07H208B | 22-45-9078     | A-7720-F07H208B |
|                | A-7720-A08H208B |                | A-7720-B08H208B | 22-45-5083     | A-7720-C08H208B |                | A-7720-D08H208B |                | A-7720-E08H208B | 22-45-9088     | A-7720-F08H208B |
|                | A-7720-A09H208B |                | A-7720-B09H208B | 22-45-5093     | A-7720-C09H208B |                | A-7720-D09H208B |                | A-7720-E09H208B | 22-45-9098     | A-7720-F09H208B |
|                | A-7720-A10H208B |                | A-7720-B10H208B | 22-45-5103     | A-7720-C10H208B |                | A-7720-D10H208B |                | A-7720-E10H208B | 22-45-9108     | A-7720-F10H208B |
|                | A-7720-A11H208B |                | A-7720-B11H208B | 22-45-5113     | A-7720-C11H208B |                | A-7720-D11H208B |                | A-7720-E11H208B | 22-45-9118     | A-7720-F11H208B |
|                | A-7720-A12H208B |                | A-7720-B12H208B | 22-45-5123     | A-7720-C12H208B |                | A-7720-D12H208B |                | A-7720-E12H208B | 22-45-9128     | A-7720-F12H208B |
|                | A-7720-A13H208B |                | A-7720-B13H208B | 22-45-5133     | A-7720-C13H208B |                | A-7720-D13H208B |                | A-7720-E13H208B | 22-45-9138     | A-7720-F13H208B |
|                | A-7720-A14H208B |                | A-7720-B14H208B | 22-45-5143     | A-7720-C14H208B |                | A-7720-D14H208B |                | A-7720-E14H208B | 22-45-9148     | A-7720-F14H208B |
|                | A-7720-A15H208B |                | A-7720-B15H208B | 22-45-5153     | A-7720-C15H208B |                | A-7720-D15H208B |                | A-7720-E15H208B | 22-45-9158     | A-7720-F15H208B |
|                | A-7720-A16H208B |                | A-7720-B16H208B | 22-45-5163     | A-7720-C16H208B |                | A-7720-D16H208B |                | A-7720-E16H208B | 22-45-9168     | A-7720-F16H208B |
|                | A-7720-A17H208B |                | A-7720-B17H208B | 22-45-5173     | A-7720-C17H208B |                | A-7720-D17H208B |                | A-7720-E17H208B | 22-45-9178     | A-7720-F17H208B |
|                | A-7720-A18H208B |                | A-7720-B18H208B | 22-45-5183     | A-7720-C18H208B |                | A-7720-D18H208B |                | A-7720-E18H208B | 22-45-9188     | A-7720-F18H208B |
|                | A-7720-A19H208B |                | A-7720-B19H208B | 22-45-5193     | A-7720-C19H208B |                | A-7720-D19H208B |                | A-7720-E19H208B | 22-45-9198     | A-7720-F19H208B |
|                | A-7720-A20H208B |                | A-7720-B20H208B | 22-45-5203     | A-7720-C20H208B |                | A-7720-D20H208B |                | A-7720-E20H208B | 22-45-9208     | A-7720-F20H208B |
|                | A-7720-A21H208B |                | A-7720-B21H208B | 22-45-5213     | A-7720-C21H208B |                | A-7720-D21H208B |                | A-7720-E21H208B | 22-45-9218     | A-7720-F21H208B |
|                | A-7720-A22H208B |                | A-7720-B22H208B | 22-45-5223     | A-7720-C22H208B |                | A-7720-D22H208B |                | A-7720-E22H208B | 22-45-9228     | A-7720-F22H208B |
|                | A-7720-A23H208B |                | A-7720-B23H208B | 22-45-5233     | A-7720-C23H208B |                | A-7720-D23H208B |                | A-7720-E23H208B | 22-45-9238     | A-7720-F23H208B |
|                | A-7720-A24H208B |                | A-7720-B24H208B | 22-45-5243     | A-7720-C24H208B |                | A-7720-D24H208B |                | A-7720-E24H208B | 22-45-9248     | A-7720-F24H208B |
|                | A-7720-A25H208B |                | A-7720-B25H208B | 22-45-5253     | A-7720-C25H208B |                | A-7720-D25H208B |                | A-7720-E25H208B | 22-45-9258     | A-7720-F25H208B |
|                | A-7720-A26H208B |                | A-7720-B26H208B | 22-45-5263     | A-7720-C26H208B |                | A-7720-D26H208B |                | A-7720-E26H208B | 22-45-9268     | A-7720-F26H208B |
|                | A-7720-A27H208B |                | A-7720-B27H208B | 22-45-5273     | A-7720-C27H208B |                | A-7720-D27H208B |                | A-7720-E27H208B | 22-45-9278     | A-7720-F27H208B |
|                | A-7720-A28H208B |                | A-7720-B28H208B | 22-45-5283     | A-7720-C28H208B |                | A-7720-D28H208B |                | A-7720-E28H208B | 22-45-9288     | A-7720-F28H208B |



|   |  |   |                                      |
|---|--|---|--------------------------------------|
| <b>REVISION:</b><br><b>BA</b>                 | <b>ECR/ECN INFORMATION:</b><br>EC No.: UCP2009-2291<br>DATE: 4/17/2009 | <b>TITLE:</b><br><b>KK 100 IDT CONNECTOR ASSEMBLY</b> | <b>SHEET No.</b><br><b>15</b>        |
| <b>DOCUMENT NUMBER:</b><br><b>SD-7720-001</b> | <b>CREATED / REVISED BY:</b><br><b>MKIPPER</b>                         | <b>CHECKED BY:</b><br><b>SSOUSEK</b>                  | <b>APPROVED BY:</b><br><b>FSMITH</b> |

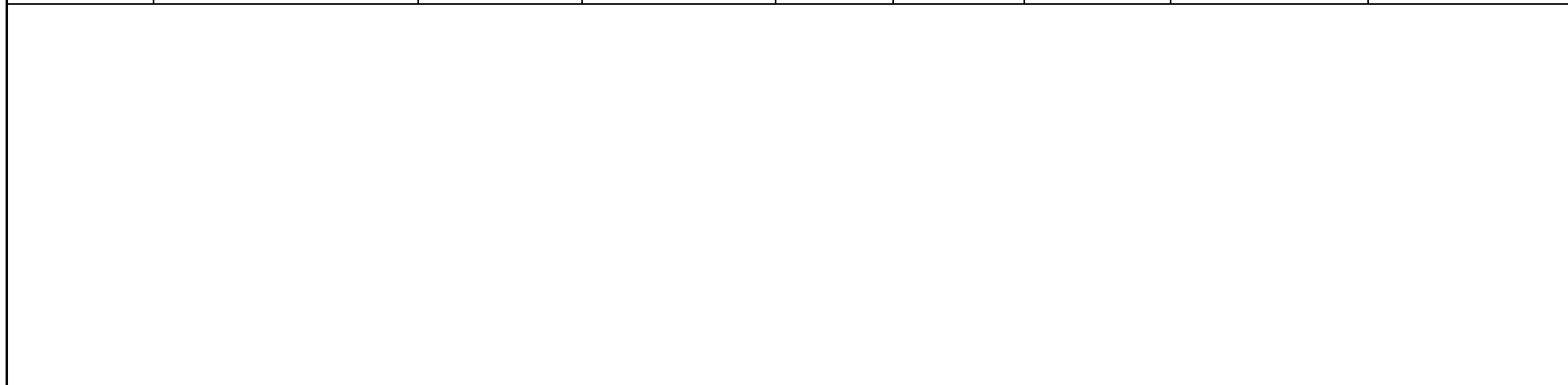
| A-7720-ANH102B |                 | A-7720-BNH102B |                 | A-7720-CNH102B |                 | A-7720-DNH102B |                 | A-7720-ENH102B |                 | A-7720-FNH102B |                 |
|----------------|-----------------|----------------|-----------------|----------------|-----------------|----------------|-----------------|----------------|-----------------|----------------|-----------------|
| HOUSING        | 7720-AN         | HOUSING        | 7720-BN         | HOUSING        | 7720-CN         | HOUSING        | 7720-DN         | HOUSING        | 7720-EN         | HOUSING        | 7720-FN         |
| TERM. NO       | 41138-H102      | TERM. NO       | 41138-H102      | TERM. NO       | 41138-H102      | TERM. NO       | 41138-H102      | TERM. NO       | 41138-H102      | TERM. NO       | 41138-H102      |
| PLATING:       | 102             | PLATING:       | 102             | PLATING:       | 102             | PLATING:       | 102             | PLATING:       | 102             | PLATING:       | 102             |
| COLOR          | GREEN           | COLOR          | GREEN           | COLOR          | GREEN           | COLOR          | GREEN           | COLOR          | GREEN           | COLOR          | GREEN           |
| MATL NO        | ENG NO:         | MATL NO        | ENG NO:         | MATL NO        | ENG NO:         | MATL NO        | ENG NO:         | MATL NO        | ENG NO:         | MATL NO        | ENG NO:         |
|                | A-7720-A02H102B |                | A-7720-B02H102B |                | A-7720-C02H102B |                | A-7720-D02H102B |                | A-7720-E02H102B | 22-26-8025     | A-7720-F02H102B |
|                | A-7720-A03H102B |                | A-7720-B03H102B |                | A-7720-C03H102B |                | A-7720-D03H102B |                | A-7720-E03H102B | 22-26-8035     | A-7720-F03H102B |
|                | A-7720-A04H102B |                | A-7720-B04H102B |                | A-7720-C04H102B |                | A-7720-D04H102B |                | A-7720-E04H102B | 22-26-8045     | A-7720-F04H102B |
|                | A-7720-A05H102B |                | A-7720-B05H102B |                | A-7720-C05H102B |                | A-7720-D05H102B |                | A-7720-E05H102B | 22-26-8055     | A-7720-F05H102B |
|                | A-7720-A06H102B |                | A-7720-B06H102B |                | A-7720-C06H102B |                | A-7720-D06H102B |                | A-7720-E06H102B | 22-26-8065     | A-7720-F06H102B |
|                | A-7720-A07H102B |                | A-7720-B07H102B |                | A-7720-C07H102B |                | A-7720-D07H102B |                | A-7720-E07H102B | 22-26-8075     | A-7720-F07H102B |
|                | A-7720-A08H102B |                | A-7720-B08H102B |                | A-7720-C08H102B |                | A-7720-D08H102B |                | A-7720-E08H102B | 22-26-8085     | A-7720-F08H102B |
|                | A-7720-A09H102B |                | A-7720-B09H102B |                | A-7720-C09H102B |                | A-7720-D09H102B |                | A-7720-E09H102B | 22-26-8095     | A-7720-F09H102B |
|                | A-7720-A10H102B |                | A-7720-B10H102B |                | A-7720-C10H102B |                | A-7720-D10H102B |                | A-7720-E10H102B | 22-26-8105     | A-7720-F10H102B |
|                | A-7720-A11H102B |                | A-7720-B11H102B |                | A-7720-C11H102B |                | A-7720-D11H102B |                | A-7720-E11H102B | 22-26-8115     | A-7720-F11H102B |
|                | A-7720-A12H102B |                | A-7720-B12H102B |                | A-7720-C12H102B |                | A-7720-D12H102B |                | A-7720-E12H102B | 22-26-8125     | A-7720-F12H102B |
|                | A-7720-A13H102B |                | A-7720-B13H102B |                | A-7720-C13H102B |                | A-7720-D13H102B |                | A-7720-E13H102B | 22-26-8135     | A-7720-F13H102B |
|                | A-7720-A14H102B |                | A-7720-B14H102B |                | A-7720-C14H102B |                | A-7720-D14H102B |                | A-7720-E14H102B | 22-26-8145     | A-7720-F14H102B |
|                | A-7720-A15H102B |                | A-7720-B15H102B |                | A-7720-C15H102B |                | A-7720-D15H102B |                | A-7720-E15H102B | 22-26-8155     | A-7720-F15H102B |
|                | A-7720-A16H102B |                | A-7720-B16H102B |                | A-7720-C16H102B |                | A-7720-D16H102B |                | A-7720-E16H102B | 22-26-8165     | A-7720-F16H102B |
|                | A-7720-A17H102B |                | A-7720-B17H102B |                | A-7720-C17H102B |                | A-7720-D17H102B |                | A-7720-E17H102B | 22-26-8175     | A-7720-F17H102B |
|                | A-7720-A18H102B |                | A-7720-B18H102B |                | A-7720-C18H102B |                | A-7720-D18H102B |                | A-7720-E18H102B | 22-26-8185     | A-7720-F18H102B |
|                | A-7720-A19H102B |                | A-7720-B19H102B |                | A-7720-C19H102B |                | A-7720-D19H102B |                | A-7720-E19H102B | 22-26-8195     | A-7720-F19H102B |
|                | A-7720-A20H102B |                | A-7720-B20H102B |                | A-7720-C20H102B |                | A-7720-D20H102B |                | A-7720-E20H102B | 22-26-8205     | A-7720-F20H102B |
|                | A-7720-A21H102B |                | A-7720-B21H102B |                | A-7720-C21H102B |                | A-7720-D21H102B |                | A-7720-E21H102B | 22-26-8215     | A-7720-F21H102B |
|                | A-7720-A22H102B |                | A-7720-B22H102B |                | A-7720-C22H102B |                | A-7720-D22H102B |                | A-7720-E22H102B | 22-26-8225     | A-7720-F22H102B |
|                | A-7720-A23H102B |                | A-7720-B23H102B |                | A-7720-C23H102B |                | A-7720-D23H102B |                | A-7720-E23H102B | 22-26-8235     | A-7720-F23H102B |
|                | A-7720-A24H102B |                | A-7720-B24H102B |                | A-7720-C24H102B |                | A-7720-D24H102B |                | A-7720-E24H102B | 22-26-8245     | A-7720-F24H102B |
|                | A-7720-A25H102B |                | A-7720-B25H102B |                | A-7720-C25H102B |                | A-7720-D25H102B |                | A-7720-E25H102B | 22-26-8255     | A-7720-F25H102B |
|                | A-7720-A26H102B |                | A-7720-B26H102B |                | A-7720-C26H102B |                | A-7720-D26H102B |                | A-7720-E26H102B | 22-26-8265     | A-7720-F26H102B |
|                | A-7720-A27H102B |                | A-7720-B27H102B |                | A-7720-C27H102B |                | A-7720-D27H102B |                | A-7720-E27H102B | 22-26-8275     | A-7720-F27H102B |
|                | A-7720-A28H102B |                | A-7720-B28H102B |                | A-7720-C28H102B |                | A-7720-D28H102B |                | A-7720-E28H102B | 22-26-8285     | A-7720-F28H102B |



|   |  |   |                                      |
|---|--|---|--------------------------------------|
| <b>REVISION:</b><br><b>BA</b>                 | <b>ECR/ECN INFORMATION:</b><br>EC No.: UCP2009-2291<br>DATE: 4/17/2009 | <b>TITLE:</b><br><b>KK 100 IDT CONNECTOR ASSEMBLY</b> | <b>SHEET No.</b><br><b>16</b>        |
| <b>DOCUMENT NUMBER:</b><br><b>SD-7720-001</b> | <b>CREATED / REVISED BY:</b><br><b>MKIPPER</b>                         | <b>CHECKED BY:</b><br><b>SSOUSEK</b>                  | <b>APPROVED BY:</b><br><b>FSMITH</b> |



| MATL NO   | ENG NO:               | HOUSING      | TERM. NO      | COLOR | PLATING: | MOLDED VOID | TERMINAL VOID |  |
|-----------|-----------------------|--------------|---------------|-------|----------|-------------|---------------|--|
| 022421243 | A-7720-D24HP909C-13A  | 7720-D24-13  | 41512-H(P909) | GREEN | P909     | 13          | 13            |  |
| 022421213 | A-7720-D21HP909C-19A  | 7720-D21-19  | 41512-H(P909) | GREEN | P909     | 19          | 19            |  |
| 022421223 | A-7720-D22HP909C-19A  | 7720-D22-19  | 41512-H(P909) | GREEN | P909     | 19          | 19            |  |
| 022421155 | A-7720-D15HP909C-5A   | 7720-D15-5   | 41512-H(P909) | GREEN | P909     | 5           | 5             |  |
| 022421156 | A-7720-E15HP909B-2B   | 7720-E15-2   | 41138-H(P909) | GREEN | P909     | 2           | NONE          |  |
| 022421104 | A-7720-E10HP909B-9B   | 7720-E10-9   | 41138-H(P909) | GREEN | P909     | 9           | NONE          |  |
| 022421124 | A-7720-E12HP909B-9B   | 7720-E12-9   | 41138-H(P909) | GREEN | P909     | 9           | NONE          |  |
| 022421144 | A-7720-F14HP909B-51B  | 7720-F14-51  | 41138-H(P909) | GREEN | P909     | 2,3,5,6     | NONE          |  |
| 022421233 | A-7720-F23HP909B-2B   | 7720-F23-2   | 41138-H(P909) | GREEN | P909     | 2           | NONE          |  |
| 022421183 | A-7720-F18HP909B-2B   | 7720-F18-2   | 41138-H(P909) | GREEN | P909     | 2           | NONE          |  |
| 022421135 | A-7720-F13HP909B-2B   | 7720-F13-2   | 41138-H(P909) | GREEN | P909     | 2           | NONE          |  |
| 022421175 | A-7720-F17HP909B-51A  | 7720-F17-51  | 41138-H(P909) | GREEN | P909     | 1,17        | 1,17          |  |
| 050290032 | A-7720-E17HP909B-51A  | 7720-E17-51  | 41138-H(P909) | GREEN | P909     | 1,17        | 1,17          |  |
| 050291609 | A-7720-E21HP909B-51A  | 7720-E21-51  | 41138-H(P909) | GREEN | P909     | 1,21        | NONE          |  |
| 050291615 | A-7720-E19HP909B-51A  | 7720-E19-51  | 41138-H(P909) | GREEN | P909     | 1, 19       | 1, 19         |  |
| 050348528 | A-7720-F03A102A-2A    | 7720-F03-2   | 7691-A(102)   | BROWN | 102      | 2           | 2             |  |
| 050348532 | A-7720-F04A102A-51A   | 7720-F04-51  | 7691-A(102)   | BROWN | 102      | 2,3         | 2,3           |  |
| 050362456 | A-7720-WC05FP909B-51A | 7720-WC05-51 | 41188-F(P909) | BLACK | P909     | 2,4         | 2,4           |  |



|  |   |  |                               |
|--|---|--|-------------------------------|
| REVISION:<br><b>BA</b>                 | ECR/ECN INFORMATION:<br>EC No.: UCP2009-2291<br>DATE: 4/17/2009 | TITLE:<br><b>KK 100 IDT CONNECTOR ASSEMBLY</b> | SHEET No.<br><b>18</b>        |
| DOCUMENT NUMBER:<br><b>SD-7720-001</b> | CREATED / REVISED BY:<br><b>MKIPPER</b>                         | CHECKED BY:<br><b>SSOUSEK</b>                  | APPROVED BY:<br><b>FSMITH</b> |