

T-1³/₄ (5 mm) Right Angle LED Indicator Options

Technical Data

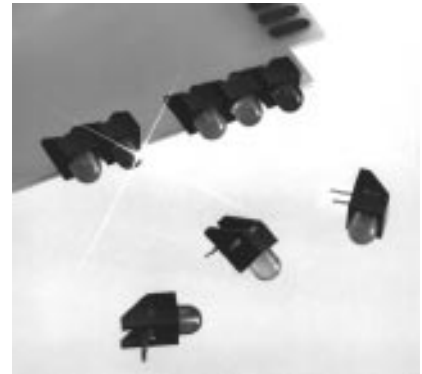
Option B2 Option B1

Features

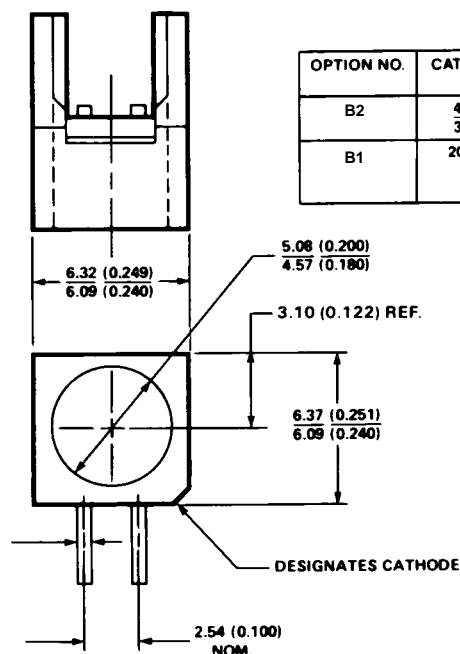
- Ideal for Card Edge Status Indication
- Package Design Allows Flush Seating on a PC Board
- May be Side Stacked on 6.35 mm (0.25") Centers
- LEDs Available in Various Colors, in T-1³/₄ Clear or Diffused Packages
- Housing Meets UL9V-0 Flammability Rating

Description

The T-1³/₄ Option B2 and B1 series of Right Angle Indicators are industry standard status indicators that incorporate a T-1³/₄ LED lamp in a black plastic right angle mount housing. These products are designed to be used as back panel diagnostic indicators and card edge logic status indicators.



Package Dimensions



OPTION NO.	CATHODE LEAD LENGTH	ANODE LEAD LENGTH	
B2	4.70 (0.185) 3.68 (0.145)	4.70 (0.185) 3.68 (0.145)	SHEARED EVEN LEADS
B1	20.32 (0.800) MIN.	1.27 (0.050) NOM. LONGER THAN CATHODE	UNSHEARED UNEVEN LEADS

- NOTES:
1. ALL DIMENSIONS ARE IN MILLIMETRES (INCHES).
 2. LEAD WIDTH MAY BE 0.45 (0.018) OR 0.64 (0.025) SQUARE NOMINAL DEPENDING UPON PRODUCT TYPE.
 3. OPTION B1 IS AVAILABLE FOR LONGER LEADS.

PATENT PENDING



Ordering Information

To order T-1³/₄ high dome lamps with right angle mount housing, select the base part number and add the option code B2 or B1. For example: HLMP-3750-L00B2 option B2.

Contact your local Agilent Sales Office or authorized components distributor for additional ordering information.

The Plastic right angle housing may be purchased separately as part number HLMP-5029.

Absolute Maximum Ratings and Electrical/Optical Characteristics

The absolute maximum ratings and device characteristics are identical to those of the T-1³/₄ LED lamps. For information about these characteristics, see the data sheets of the equivalent T-1³/₄ LED lamp.

These options are not recommended for InGaN products. The material used in the plastic housing is not suitable to be used for ESD sensitive devices.