

493-429.

TEMPERATURE LOGGER ☒

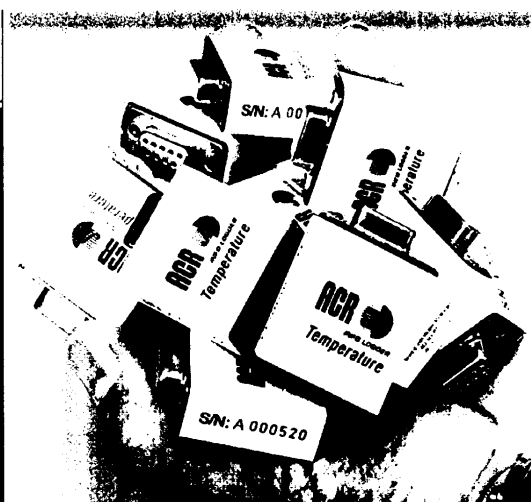
LOW COST ☒

INCLUSIVE SOFTWARE ☒

EASY TO USE ☒

$\pm 0.2^{\circ}\text{C}$ SENSOR ACCURACY ☒

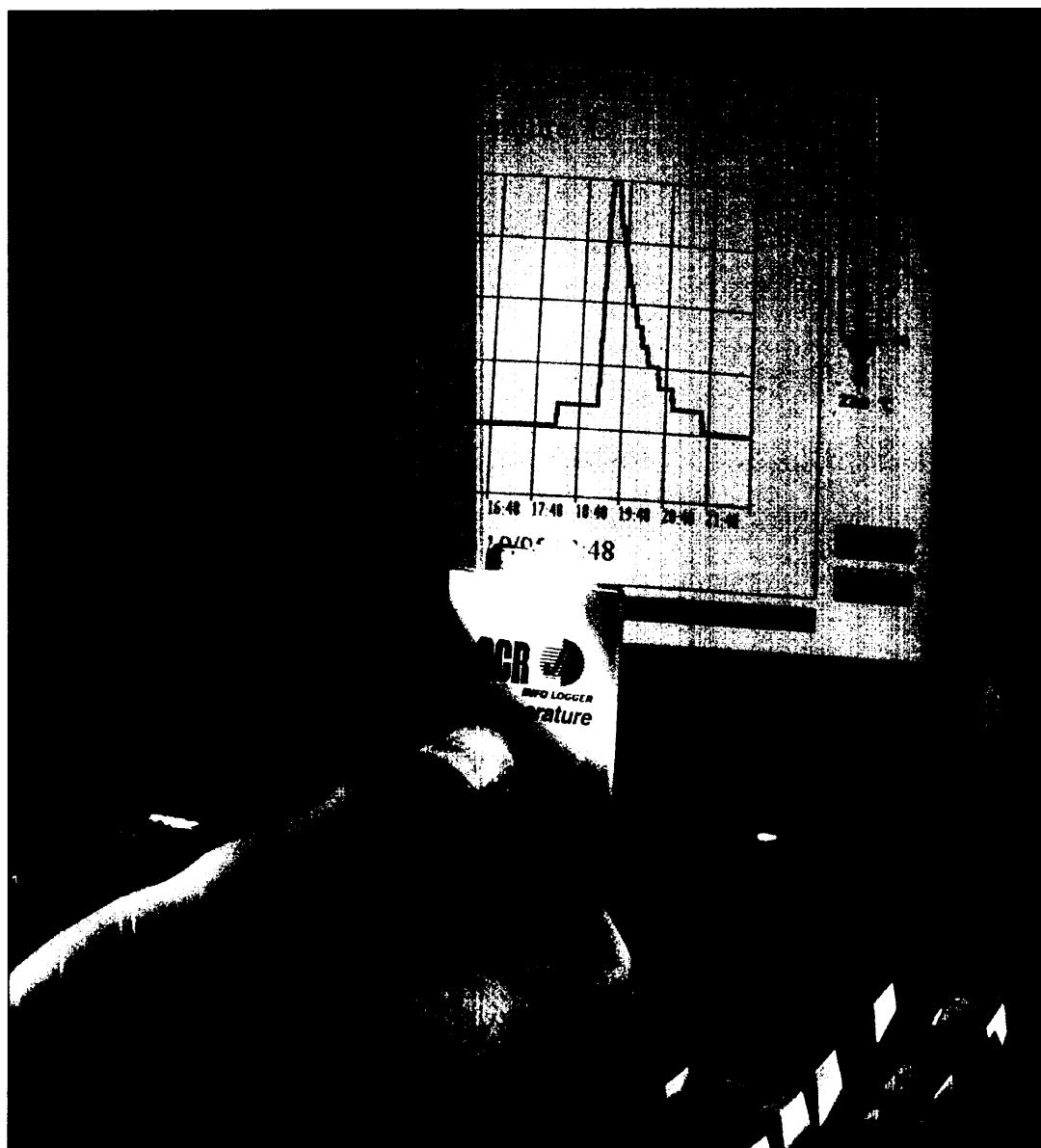
GRAPHICAL PRESENTATION ☒



DATA LOGGERS



TINY TEMPERATURE DATA LOGGER ACR/JR



STATUS INSTRUMENTS LTD

Green Lane Tewkesbury Gloucestershire UK GL20 8HD
Tel: 01684 853300 Fax: 01684 203746

52-515-2137-02 ISSUE 1 AUGUST 1998



ACR/JR DATA LOGGER

INTRODUCTION

The ACR/JR Temperature information logger provides a low cost easy method of recording temperature. All that is required is an IBM™ PC (or 100% compatible) with Microsoft™, Windows™ to begin using the logger. There is no programming, setup or cables to connect. Every ACR/JR logger comes complete with software and simply plugs into a PC comms port to download information.

CONTINUOUS RECORDING

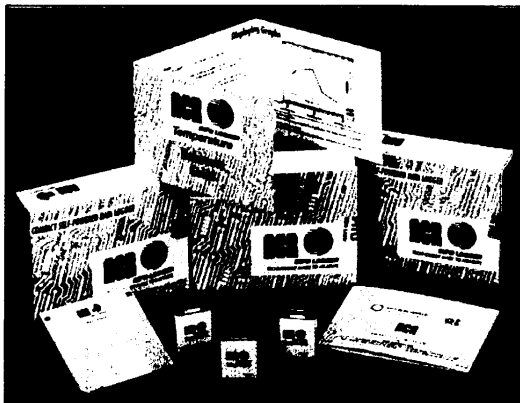
The self powered ACR/JR is placed in the desired location, there are no switches, buttons or set up options to consider.

DATA RETRIEVAL

The logger is plugged directly into an available comms port on a PC and the software provided in the ACR/JR package will automatically find the logger and display a detailed time based graph of temperature recorded.

INFORMATION ANALYSIS

The logged temperature data is displayed on a scrolling window that permits detailed analysis. The scroll bar at the bottom of the graph window allows critical areas of data to be selected. Hardcopy printouts can be made which are easy to do using any Windows supported printer. Data can be saved for future reference or transported to the ACR TrendReader software package for even more powerful reporting facilities.



APPROVALS

EMC	Emissions	EN 55011
	Susceptibility	IEC801-2,3,4

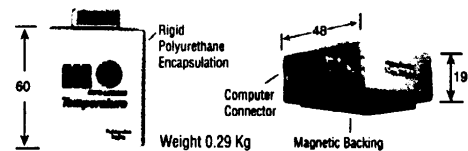
ALSO AVAILABLE SMARTREADER SERIES

- ☒ 8 BIT ACR/SR RANGE
- ☒ 12 BIT ACR/SRP RANGE
- ☒ 128KB MEMORY OPTION ACR/SRP
- ☒ 1.5MB OPTION ACR/SRP8
- ☒ SMALL SIZE

SPECIFICATIONS @ 20°C

Memory size	8 K (with compression up to 32K)
Resolution	8 bit (1 part in 256)
Sampling method	First-in,First-out
Sampling rate	1 reading every 2 minutes
Total record time	typically 22 days depending on temperature fluctuations
Operating limits	-40°C to 85°C
Clock accuracy	±2 seconds per day plus one sampling interval
Battery	3 volt lithium, 5 years normal use
PC requirements	IBM PC or 100% compatible Microsoft Windows 3.1 or later, Windows 95 and NT.

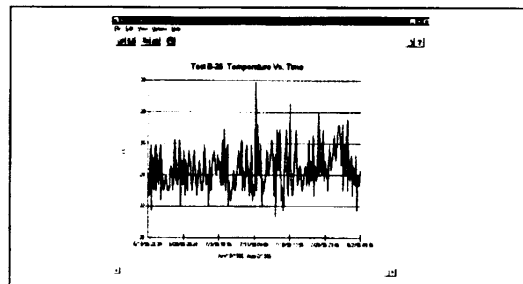
MECHANICAL DETAILS



SOFTWARE

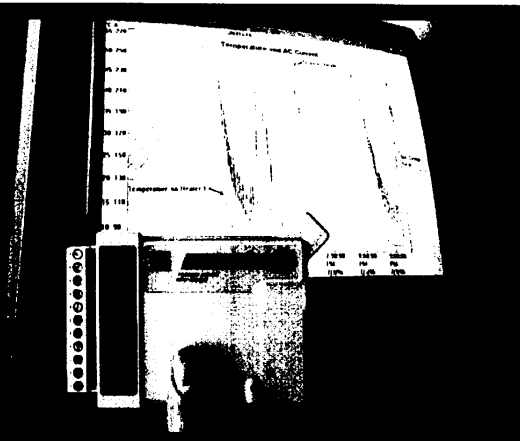
ACR/JR graph software is an easy to use data analysis programme for the ACR/JR temperature logger. To back up the stored data or view the temperature in real time, simply plug the logger into the PC's serial port. The software will automatically display the logged readings in a graphical format together with the current real time reading, on a time and date basis.

TYPICAL GRAPH SCREEN PRESENTATION



ORDER CODE

ACR/JR	Complete with Software
--------	------------------------



Every effort has been taken to ensure the accuracy of this specification, however we do not accept responsibility for damage, injury, loss or expense resulting from errors and omissions, and we reserve the right of amendment without notice.