

JLS CLASS J FUSES

600 VAC ■ Fast-Acting ■ 1 – 600 Amperes



SPECIFICATIONS

Voltage ratings: 600 Volts AC

Interrupting ratings: 200,000 amperes rms symmetrical

Ampere range: 1— 600 amperes

Approvals: UL Listed Class J fuses per UL 248
(formerly UL 198C)
(File No. E81895)
CSA Certified HRCI-J (File No. LR29862)
Federal Specification No. WF1814 (QPL)



AMPERE RATINGS

1	25	60	125	300
3	30	70	150	350
6	35	80	175	400
10	40	90	200	450
15	45	100	225	500
20	50	110	250	600

Example part number (series & ampere): JLS 110

RECOMMENDED FUSE BLOCKS

LJ600 series

Refer to Fuse Block section of this catalog for additional information.

JLS series fuses provide space-saving, fast-acting overload and short-circuit protection for non-inductive loads. When used for motors or other inductive loads, the ampere rating of JLS series fuses must be increased to prevent nuisance opening on inrush currents. In such applications, JLS fuses may provide only short circuit protection. Consider using Littelfuse POWR-PRO® JTD series time-delay fuses in such circuits.

APPLICATIONS

General purpose circuits with little or no motor load.

Resistive loads, such as resistance electric heat.

Loads requiring fast-acting overload protection, such as equipment containing solid-state devices.

SPACE SAVING

- JLS fuse characteristics are similar to KLNK/KLSR fast-acting Class RK1 fuses, but they are much smaller.

SAFETY

- 200,000 A.I.R. — Reliable interruption of all overcurrents up to 200,000 amperes.
- Extremely current limiting — Stops damaging short-circuit current faster than any mechanical protective device.
- Fast-acting — Provides fast-acting protection to equipment such as variable speed drives, rectifiers and other equipment containing surge-sensitive components.

LONGER EQUIPMENT LIFE

- Current-limiting design reduces damage to equipment caused by heating and magnetic effects of short-circuit currents.

ECONOMICAL

- Extremely current-limiting design often permits use of readily available, less costly equipment.
- Manufacturers of equipment containing dual voltage devices can simplify manufacturing and reduce inventory by standardizing on 600 volt JLS fuses and Class J fuse blocks for all AC voltage ratings.

EASY TO USE

- 200,000 A.I.R. rating minimizes need for short-circuit calculations.

NOTE: Littelfuse JLS fuses are not time-delay fuses. For applications where short-duration surges and spikes may cause nuisance fuse opening, consider the use of Littelfuse POWR-PRO® JTD series time-delay fuses.

JLS CLASS J FUSES

600 VAC ■ Fast-Acting ■ 1 — 600 Amperes

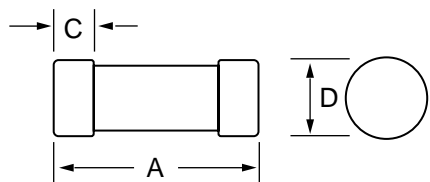


Fig. 1

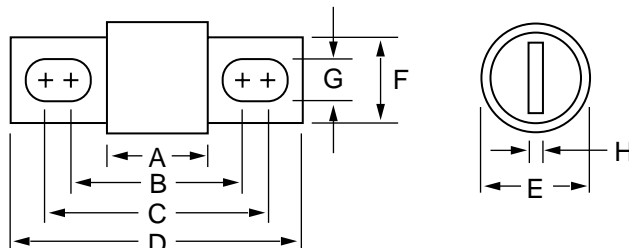


Fig. 2

AMPERES	REFER TO FIG. NO.	DIMENSIONS IN INCHES (mm in parentheses)							
		A	B	C	D	E	F	G	H
1 – 30	1	2-1/4 (57.2)	—	1/2 (12.7)	13/16 (20.6)	—	—	—	—
35 – 60	1	2-3/8 (60.3)	—	5/8 (15.9)	1-1/16 (27.0)	—	—	—	—
70 – 100	2	2-5/8 (66.7)	3-17/32 (89.7)	3-23/32 (94.5)	4-5/8 (117.5)	1 (25.4)	3/4 (19.1)	9/32 (7.1)	1/8 (3.2)
110 – 200	2	3 (76.2)	4-9/32 (108.7)	4-15/32 (113.5)	5-3/4 (146.1)	1-1/2 (38.1)	1-1/8 (28.6)	9/32 (7.1)	3/16 (4.8)
225 – 400	2	3-5/8 (85.7)	5-1/8 (130.2)	5-3/8 (136.5)	7-1/8 (181.0)	2 (50.8)	1-5/8 (41.3)	13/32 (10.3)	1/4 (6.4)
450 – 600	2	3-3/4 (95.3)	5-27/32 (148.4)	6-5/32 (156.4)	8 (203.2)	2-1/2 (63.5)	2 (50.8)	17/32 (13.5)	3/8 (9.5)

