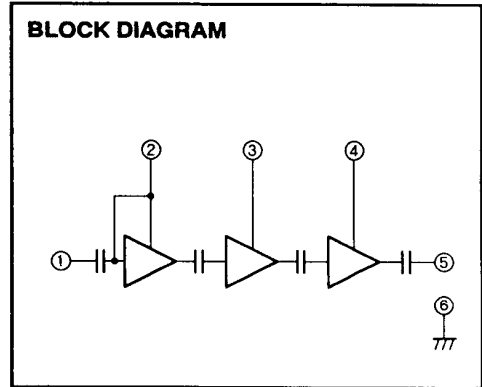
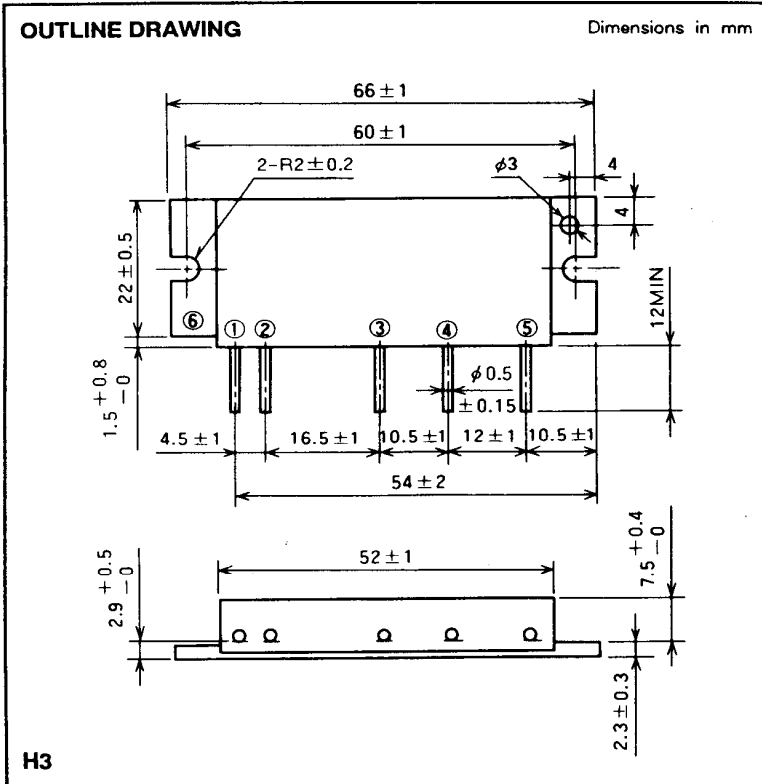


M57704SL

360-380MHz, 12.5V, 13W, FM MOBILE RADIO



- PIN :
- ① P_{in} : RF INPUT
 - ② V_{CC1} : 1st. DC SUPPLY
 - ③ V_{CC2} : 2nd. DC SUPPLY
 - ④ V_{CC3} : 3rd. DC SUPPLY
 - ⑤ P_o : RF OUTPUT
 - ⑥ GND : FIN

ABSOLUTE MAXIMUM RATINGS (T_c = 25 °C unless otherwise noted)

| Symbol | Parameter | Conditions | Ratings | Unit |
|----------------------|----------------------------|--|-------------|------|
| V _{cc} | Supply voltage | | 17 | V |
| I _{cc} | Total current | | 5 | A |
| P _{in(max)} | Input power | Z _G = Z _L = 50 Ω | 0.4 | W |
| P _{o(max)} | Output power | Z _G = Z _L = 50 Ω | 20 | W |
| T _{c(OP)} | Operation case temperature | | - 30 to 110 | °C |
| T _{stg} | Storage temperature | | - 40 to 110 | °C |

Note. Above parameters are guaranteed independently.

ELECTRICAL CHARACTERISTICS (T_c = 25 °C unless otherwise noted)

| Symbol | Parameter | Test conditions | Limits | | Unit |
|-----------------|---------------------|---|---------------------------|------|------|
| | | | Min | Max | |
| f | Frequency range | P _{in} = 0.2W V _{cc} = 12.5V Z _G = Z _L = 50 Ω | 360 | 380 | MHz |
| P _o | Output power | | 13 | | W |
| η _T | Total efficiency | | 35 | | % |
| 2f _o | 2nd. harmonic | | | - 30 | dBc |
| ρ _{in} | Input VSWR | | | 2.8 | - |
| - | Load VSWR tolerance | V _{cc} = 15.2V, P _o = 14W (P _{in} : controlled) Load VSWR=20:1 (All phase), 2sec. Z _G = 50 Ω | No degradation or destroy | | - |

Note. Above parameters, ratings, limits and conditions are subject to change.