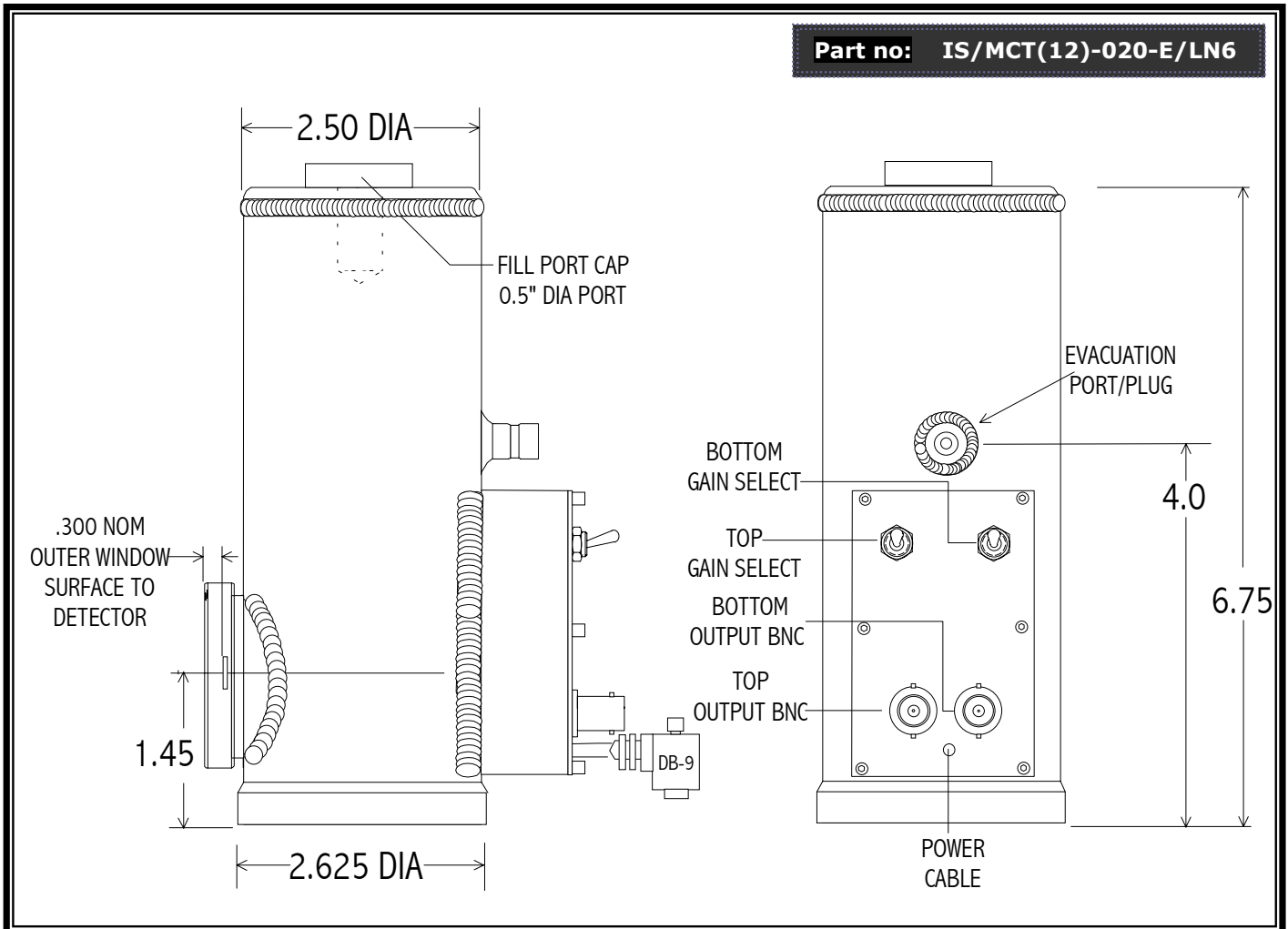


LN-6 2-COLOR PHOTODETECTOR RECEIVER

Part no: IS/MCT(12)-020-E/LN6



SPECIFICATIONS @ 77K

Detector	TOP: 2mm dia InSb Photodiode	BOTTOM: 2mm x 2mm MCT12 detector
Spectral Range	2 – 5.5 μm , pk \sim 5.0	5.5 – 14 μm , pk \sim 12.
Responsivity-V/W @ pk,Amp Output	$10^5 / 10^4$	$10^5 / 10^4$
Noise- V/Hz ^{1/2} @ 1000Hz	$1.8 \times 10^{-7} / 1.8 \times 10^{-8}$	$0.7 \times 10^{-6} / 0.7 \times 10^{-7}$
D*(pk)- cm ² Hz ^{1/2} /W @ pk	1.0×10^{11}	3.0×10^{10}
Bandwidth (-3dB)- Hz	DC – 50k	5 – 50k
Dewar LN ₂ Hold Time	12 + HOURS	
Power Requirements	+/- 9VDC TO +/- 15 VDC, 40 mA	
Connections	BNC signal with 3 lead shielded power cable. Red = +V, Black = -V, White/Shield = ground Note: A DB9 connector is provided on units purchased with optional PS-1 Low Noise Power Supply	