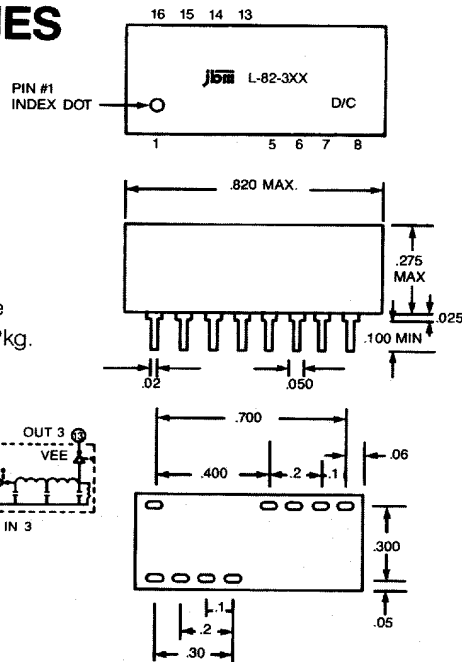


T-47-13

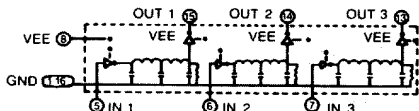
L-82-300 SERIES

10K ECL Multi Delay Line



FEATURES

- ECL Compatible
- 16 Pin DIP Package
- 3 Delay Lines per Pkg.



JBM P/N	IN-5 OUT-15 DL 1	IN-6 OUT-14 DL 2	IN-7 OUT-13 DL 3
L-82-301	5 ± 1	5 ± 1	5 ± 1
L-82-302	5 ± 1	10 ± 1	15 ± 1
L-82-303	6 ± 1	6 ± 1	6 ± 1
L-82-304	7 ± 1	7 ± 1	7 ± 1
L-82-305	8 ± 1	8 ± 1	8 ± 1
L-82-306	9 ± 1	9 ± 1	9 ± 1
L-82-307	10 ± 1	10 ± 1	10 ± 1
L-82-308	10 ± 1	15 ± 1	20 ± 1
L-82-309	10 ± 1	20 ± 1	30 ± 1
L-82-310	15 ± 1	15 ± 1	15 ± 1
L-82-311	15 ± 1	20 ± 1	25 ± 1.5
L-82-312	15 ± 1	30 ± 1.5	45 ± 2
L-82-313	20 ± 1	20 ± 1	20 ± 1
L-82-314	20 ± 1	30 ± 1.5	40 ± 2
L-82-315	20 ± 1	40 ± 2	60 ± 3
L-82-316	25 ± 1	25 ± 1.5	25 ± 1.5
L-82-317	25 ± 1	50 ± 2.5	75 ± 3
L-82-318	30 ± 1.5	30 ± 1.5	30 ± 1.5
L-82-319	30 ± 1.5	40 ± 2	60 ± 2.5
L-82-320	30 ± 1.5	45 ± 2	60 ± 3
L-82-321	40 ± 2	40 ± 2	40 ± 2
L-82-322	40 ± 2	50 ± 2.5	60 ± 3
L-82-323	50 ± 2.5	50 ± 2.5	50 ± 2.5
L-82-324	75 ± 3	75 ± 3	75 ± 3
L-82-325	100 ± 5	100 ± 5	100 ± 5

Delay Line Characteristics

Input Characteristics:

Vih logic "1" input voltage - .98V min.
 Vil logic "0" input voltage - 1.63V max.
 Iih logic "1" input current 265 μA max.
 Iil logic "0" input current - 5 μA max.

Output Characteristics:

Voh logic "1" output voltage - .96V Min.
 Vol logic "0" output voltage - 1.65V max.

Environment:

Operating temperature - 30°C to + 85°C
 Storage temperature - 55°C to + 125°C
 Operating supply voltage - 4.94 to - 5.46V

Test Conditions:

PWI 1.5 × TD
 TRI, TFI 3ns @ 20/80% @ 25°C
 VEE - 5.2V ± .05V

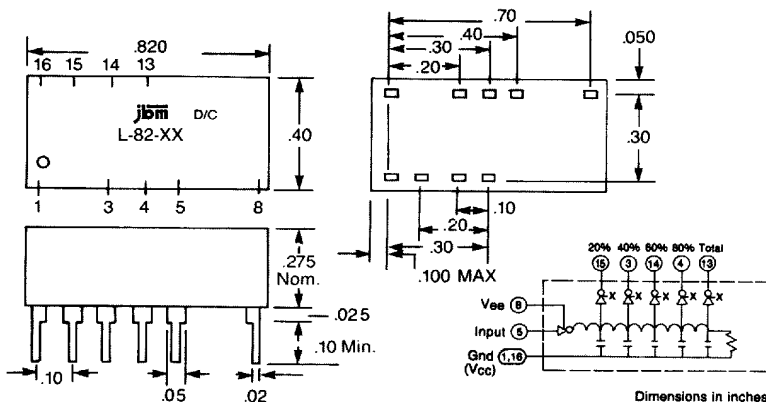
Delay Range 2-500 nsec

L-82-SERIES (5 tap)

ECL delay line

FEATURES

- 16 pin DIP configuration
- ECL compatible



JBM P/N	TAP 1 PIN 15	TAP 2 PIN 3	TAP 3 PIN 14	TAP 4 PIN 4	OUTPUT PIN 13
L-82-50	2 ± .5	4 ± .5	6 ± .5	8 ± .5	10 ± .5
L-82-51	3 ± .5	6 ± .5	9 ± .5	12 ± .5	15 ± .5
L-82-52	4 ± .5	8 ± .5	12 ± .5	16 ± 1	20 ± 1
L-82-53	5 ± 1	10 ± 1	15 ± 1	20 ± 1	25 ± 4%
L-82-54	6 ± 1	12 ± 1	18 ± 1	24 ± 1	30 ± 4%
L-82-55	7 ± 1	14 ± 1	21 ± 1	28 ± 4%	35 ± 4%
L-82-56	8 ± 1	16 ± 1	24 ± 1	32 ± 4%	40 ± 4%
L-82-57	9 ± 1	18 ± 1	27 ± 4%	36 ± 4%	45 ± 4%
L-82-58	10 ± 1	20 ± 1	30 ± 4%	40 ± 4%	50 ± 4%
L-82-59	12 ± 1	24 ± 1	36 ± 4%	48 ± 4%	60 ± 4%
L-82-60	15 ± 1	30 ± 4%	45 ± 4%	60 ± 4%	75 ± 4%
L-82-61	20 ± 1	40 ± 4%	60 ± 4%	80 ± 4%	100 ± 4%
L-82-62	25 ± 4%	50 ± 4%	75 ± 4%	100 ± 4%	125 ± 4%
L-82-63	30 ± 4%	60 ± 4%	90 ± 4%	120 ± 4%	150 ± 4%
L-82-64	35 ± 4%	70 ± 4%	105 ± 4%	140 ± 4%	175 ± 4%
L-82-65	40 ± 4%	80 ± 4%	120 ± 4%	160 ± 4%	200 ± 4%
L-82-66	45 ± 4%	90 ± 4%	140 ± 4%	180 ± 4%	225 ± 4%
L-82-67	50 ± 4%	100 ± 4%	160 ± 4%	200 ± 4%	250 ± 4%
L-82-68	60 ± 4%	120 ± 4%	180 ± 4%	240 ± 4%	300 ± 4%
L-82-69	70 ± 4%	140 ± 4%	210 ± 4%	280 ± 4%	350 ± 4%
L-82-70	80 ± 4%	160 ± 4%	240 ± 4%	320 ± 4%	400 ± 4%
L-82-71	90 ± 4%	180 ± 4%	270 ± 4%	360 ± 4%	450 ± 4%
L-82-72	100 ± 4%	200 ± 4%	300 ± 4%	400 ± 4%	500 ± 4%