

**PLEASE CHECK WWW.MOLEX.COM FOR LATEST PART INFORMATION**

**Part Number:** [0850131108](#)  
**Status:** **Active**  
**Overview:** [din\\_41612](#)  
**Description:** 2.54mm (.100") Pitch DIN 41612 Header, Vertical, Style R Reverse, 0.6µm (24µ") Selective Gold (Au), 96 Circuits, First-Mate-Last-Break Pins Available, Lead free

**Documents:**

[3D Model](#) [RoHS Certificate of Compliance \(PDF\)](#)  
[Drawing \(PDF\)](#)

**Agency Certification**

CSA LR19980  
 UL E29179

**General**

Product Family Backplane Connectors  
 Series [85013](#)  
 Application Backplane  
 Component Type PCB Header  
 Overview [din\\_41612](#)  
 Product Name IEC 603-2/DIN 41612  
 Style R

**Physical**

Circuits (Loaded) 96  
 Circuits (maximum) 96  
 Circuits Detail Rows A, B, & C  
 Durability (mating cycles max) 400  
 First Mate / Last Break Yes  
 Flammability 94V-0  
 Guide to Mating Part No  
 Keying to Mating Part Yes  
 Number of Columns 32  
 Number of Pairs Open Pin Field  
 Number of Rows 3  
 Orientation Vertical  
 PC Tail Length (in) 0.177 In  
 PC Tail Length (mm) 4.50 mm  
 PCB Locator No  
 PCB Retention Yes  
 PCB Thickness Recommended (in) 0.062 In  
 PCB Thickness Recommended (mm) 1.60 mm  
 Packaging Type Tray  
 Pitch - Mating Interface (in) 0.100 In  
 Pitch - Mating Interface (mm) 2.54 mm  
 Pitch - Term. Interface (in) 0.100 In  
 Pitch - Term. Interface (mm) 2.54 mm  
 Plating min: Mating (µin) 24  
 Plating min: Mating (µm) 0.6  
 Surface Mount Compatible (SMC) No  
 Temperature Range - Operating -55°C to +125°C

**Electrical**

Current - Maximum per Contact 1A  
 Data Rate 622.0 Mbps  
 Voltage - Maximum 1000V (RMS)

**EU RoHS**

**ELV and RoHS  
 Compliant**

**REACH SVHC**

Not Reviewed

**Halogen-Free**

**Status**

**Not Reviewed**

**China RoHS**



**Need more information on product  
 environmental compliance?**

Email [productcompliance@molex.com](mailto:productcompliance@molex.com)  
 For a multiple part number RoHS Certificate of Compliance, [click here](#)

Please visit the [Contact Us](#) section for any non-product compliance questions.

**Search Parts in this Series**

[85013Series](#)

**Mates With**

[85042 Backplane Header](#), [85052 Backplane Header](#)

**Use With**

[85089-1079 Press-in Tool](#)

**Solder Process Data**

Duration at Max. Process Temperature (seconds)	10
Lead-free Process Capability	Wave Capable (TH only)
Process Temperature max. C	260

**Material Info****Reference - Drawing Numbers**

Sales Drawing SD-85013-1108, SDA-85013-0001, SDA-85013-1108

This document was generated on 05/17/2010

**PLEASE CHECK [WWW.MOLEX.COM](http://WWW.MOLEX.COM) FOR LATEST PART INFORMATION**

20 19 18 17 16 15 14 13 12 11 9 8 7 6 5 4 3 2 1

VIEW ON MATING SIDE

○	Z	Z	Z	A	A	A	A	A	A	A	A	A	A	A	A	A	A	A	A	A	A	A	A	A	A	A	A	A	Z	Z	Z	
○	A	A	A	A	A	A	A	A	A	A	A	A	A	A	A	A	A	A	A	A	A	A	A	A	A	A	A	A	A	A	A	A
○	Z	Z	Z	A	A	A	A	A	A	A	A	A	A	A	A	A	A	A	A	A	A	A	A	A	A	A	A	Z	Z	Z		
	-	2	3	4	5	6	7	8	9	10	11	12	13	14	15	16	17	18	19	20	21	22	23	24	25	26	27	28	29	30	31	32

A = 84 STANDARD CONTACTS L = 4.5  
 Z = 12 FMLB CONTACTS +0.6 L = 4.5  
 S = 96 TOTAL NUMBER OF CONTACTS

MARKING	STANDARD
PERFORMANCE LEVEL	G2/O = CONTACT AREA LEVEL2 / TERMINATION TIN
FLUX PROOF	NO
FIXING CLIP	NO
DIMENSIONS	SD-85013-0001 SHT 1

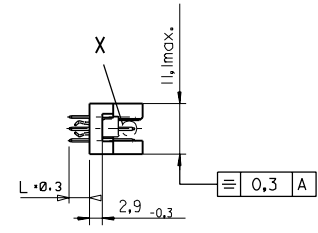
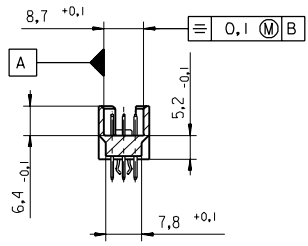
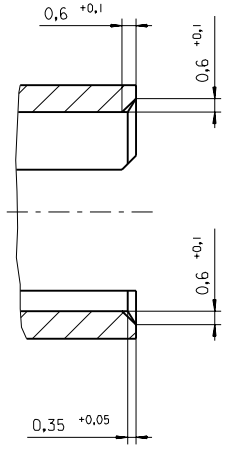
Z	G2/O	a1, 2, 3, 30, 31, 32	c1, 2, 3, 30, 31, 32
A	G2/O	a4-29 b1-32	c4-29
CONTACT SYMBOL	PERFORMANCE LEVEL	CONTACT POSITION NUMBER	

EC NO. I 2004-XXXX DRAWN NS 31/03/04 CHK'd G.L. 31/03/04 APPR G.L. 31/03/04	QUALITY SYMBOLS	GENERAL TOLERANCES: (UNLESS SPECIFIED)	SCALE	DESIGN UNITS	DIMENSIONS:		SHT	REV	
	MAJOR			<input checked="" type="checkbox"/> MM <input type="checkbox"/> INCH	<input type="checkbox"/> MM <input type="checkbox"/> INCH	<input type="checkbox"/> MM <input checked="" type="checkbox"/> INCH ONLY		REVISE ON CAD ONLY	
	CRITICAL								
		4 PLACES ±0. ±.		DRAWN BY & DATE	TITLE: 96 POS MALE CONNECTOR				
		3 PLACES ±0. ±.		S.S. 22/05/01	ACCORDING DIN 41612 STYLE R				
		2 PLACES ±0. ±.		CHECKED BY & DATE	CONTACTS ARRANGEMENT				
		1 PLACE ±0. ±.		G.L. 22/05/01	MOLEX INCORPORATED				
		ANGULAR ±		APPROVED BY & DATE	CAD FILENAME	MATERIAL NO.	DRAWING NO.	SHEET NO.	
				G.L. 22/05/01	SD-85013-1108.S01	85013-1108	SD-85013-1108	1 OF 1	
		DRAFT WHERE APPLICABLE MUST REMAIN WITHIN DIMENSIONS		THIS DRAWING CONTAINS INFORMATION THAT IS PROPRIETARY TO MOLEX INCORPORATED AND SHOULD NOT BE USED WITHOUT WRITTEN PERMISSION.					SIZE D

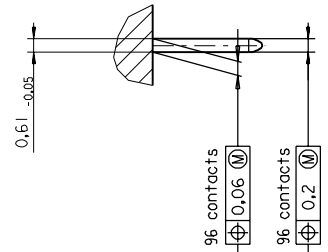
19 18 17 16 15 14 13 12 11 10 9 8 7 6 5 4 3 2 1

PART NO.  
DWG. NO.

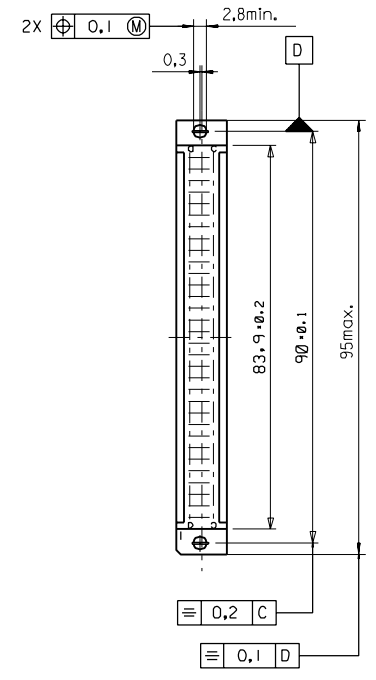
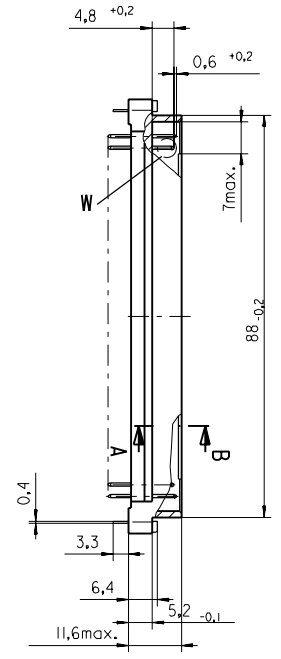
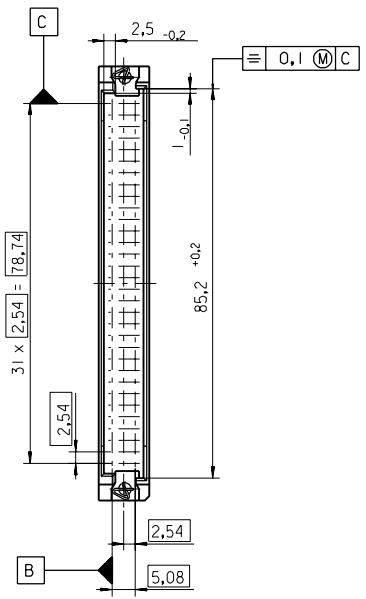
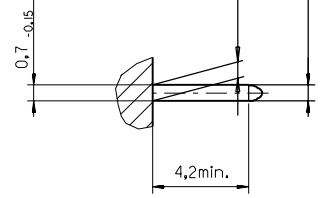
Section A - B  
5:1



View X  
5:1



View W  
5:1



FIRST ANGLE PROJECTION		REVISE ONLY ON CAD SYSTEM		SH.	REV.
UNLESS OTHERWISE SPECIFIED TOLERANCES: ANGULAR ±2°		DRWG BY	SIGN	CAD/CAM PROJECT NAME	
INCH METRIC		Ca		85013000 611	
3 PLACE ± . ±		CHK'D BY	SIGN	THIS DRAWING CONTAINS INFORMATION THAT IS PROPRIETARY TO MOLEX INC. & SHOULD NOT BE USED WITHOUT WRITTEN PERMISSION	
2 PLACE ± . ±		KN		TITLE	
1 PLACE ± . ±		APP'D BY	SIGN	96 pos. Male connector acc. DIN 41612 Style R Dimensions	
DRAFT WHERE APPLICABLE MUST REMAIN WITHIN DIMENSIONS		SCALE		SHEET NO. DATE	
DESIGN DIMENSION <input checked="" type="checkbox"/> MM		: 1		1 OF 95/06/07	
EQUIVALENT DIMENSION <input type="checkbox"/> MM				MOLEX MOLEX EUROPE	
EQUIVALENT DIMENSION <input type="checkbox"/> IN.				SHEET NO. DATE	
IF TWO DIMENSIONS ARE SHOWN THE UPPER IS THE DESIGN DIMENSION, LOWER IS SECONDARY				1 OF 95/06/07	
first release see ECN No. 1887				PART NO.	
LTR REVISIONS FOR PREVIOUS REVISIONS SEE MRI LIST				DWG NO.	
A				SDA-85013-0001	
				SIZE	
				B	

VIEW ON MATING SIDE

∩	Z	Z	A	A	A	A	A	A	A	A	A	A	A	A	A	A	A	A	A	Z	Z	
∩	A	A	A	A	A	A	A	A	A	A	A	A	A	A	A	A	A	A	A	A	A	A
∩	Z	Z	A	A	A	A	A	A	A	A	A	A	A	A	A	A	A	A	A	Z	Z	

1 2 3 4 5 6 7 8 9 10 11 12 13 14 15 16 17 18 19 20 21 22 23 24 25 26 27 28 29 30 31 32 33 34 35 36 37 38 39 40 41 42 43 44 45 46 47 48 49 50 51 52 53 54 55 56 57 58 59 60 61 62 63 64 65 66 67 68 69 70 71 72 73 74 75 76 77 78 79 80 81 82 83 84 85 86 87 88 89 90 91 92 93 94 95 96 97 98 99 100

A = 84 STANDARD CONTACTS L=4,5

Z = 12 FMLB CONTACTS ∅,6 L=4,5

S = 96 TOTAL NUMBER OF CONTACTS

Marking	Standard
Performance level	G2/0 = Contact area per form. level2 / Termination tin
Flux proof	no
Fixing clip	no
Dimensions	SDA-85013-0001 sht.1
Technical Data	PS-85013-0001

Z	G2/0	a1,2,3,30,31,32	c1,2,3,30,31,32
A	G2/0	a4-29	b1-32 c4-29
Contact symbol	Perform. level	Contact position number	

first release see ECN No. 1868	REVISIONS	FOR PREVIOUS REVISIONS SEE MRI LIST
▷	LTR	

UNLESS OTHERWISE SPECIFIED TOLERANCES: ANGULAR ± 2° INCH METRIC	DRWG BY	CC	SIGN	CAD/CAM PROJECT NAME s8501311 SO1	REVISE ONLY ON CAD SYSTEM	SH. REV.
	3 PLACE ± .	CHK'D BY	KN			
2 PLACE ± .	APP'D BY	SCALE	SIGN	TITLE 96 pos. Male connector acc. DIN 41612 style R contacts arrangement	SHEET NO. 1 OF 1	DATE 95/06/06
1 PLACE ± .	DESIGN DIMENSION	DESIGN DIMENSION	SIGN			
DRAFT WHERE APPLICABLE MUST REMAIN WITHIN DIMENSIONS			THIS DRAWING CONTAINS INFORMATION THAT IS PROPRIETARY TO MOLEX INC. & SHOULD NOT BE USED WITHOUT WRITTEN PERMISSION			
EQUIVALENT DIMENSION			PART NO.			
EQUIVALENT DIMENSION			DWG NO.			
EQUIVALENT DIMENSION			SDA-85013-1108			
EQUIVALENT DIMENSION			SIZE			
EQUIVALENT DIMENSION			A			