

PLEASE CHECK WWW.MOLEX.COM FOR LATEST PART INFORMATION

Part Number: [0197114201](#)
Status: **Active**
Description: PCB Tab Right Angle Quick Disconnect, Male, for Wire, Box, Tab 6.35mm (.250") x 0.81mm (.032")

Documents:

[Drawing \(PDF\)](#) [RoHS Certificate of Compliance \(PDF\)](#)

Agency Certification

UL E79133

General

Product Family Quick Disconnects
 Series [19711](#)
 Crimp Quality Equipment Yes
 Product Name PCB Tab
 Type Quick Disconnect

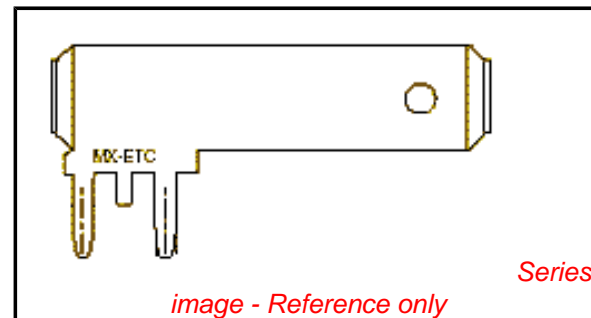
Physical

Barrel Type N/A
 Gender Male
 Glow-Wire Compliant No
 Insulation None
 Lock to Mating Part None
 Material - Metal Brass
 Orientation PCB Flag Tab
 Packaging Type Bag
 Polarized to Mating Part No
 Tab Thickness 0.81mm (.032")
 Tab Width 6.35mm (.250")
 Wire Insulation Diameter N/A
 Wire Size AWG N/A

Electrical

Voltage - Maximum N/A

Material Info



EU RoHS

**ELV and RoHS
 Compliant
 REACH SVHC
 Not Reviewed
 Halogen-Free
 Status
 Not Reviewed**

China RoHS



**Need more information on product
 environmental compliance?**

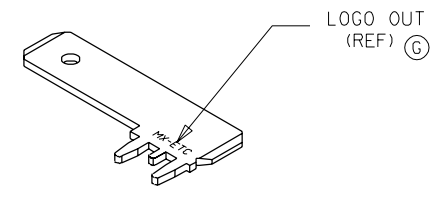
Email productcompliance@molex.com
 For a multiple part number RoHS Certificate of
 Compliance, [click here](#)

Please visit the [Contact Us](#) section for any
 non-product compliance questions.

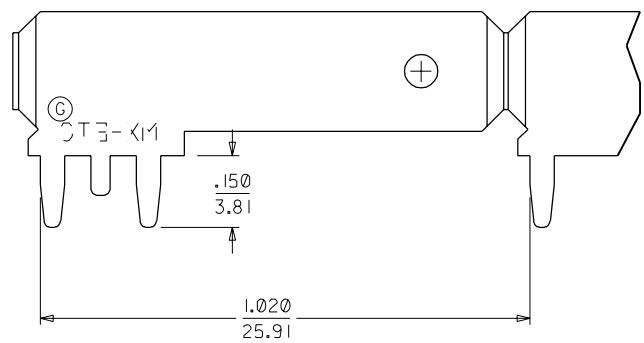
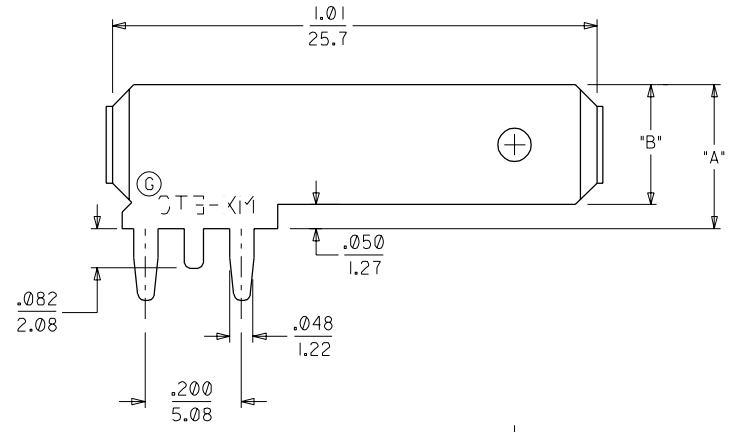
Search Parts in this Series

19711Series

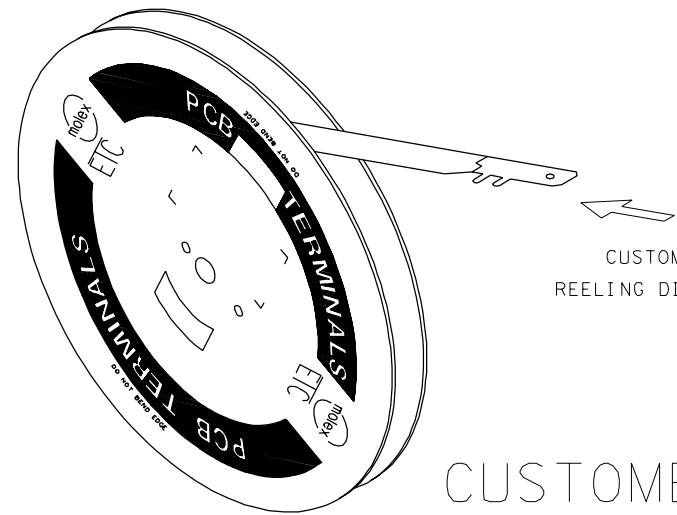
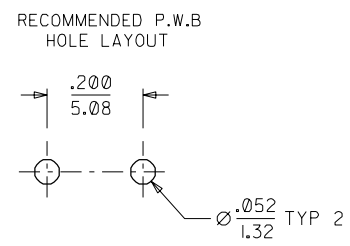
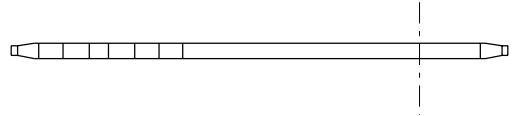
MATERIAL NUMBER	ENGINEERING NUMBER	CUSTOMER NUMBER	CARRIER	PLATING SEE NOTES 6 & 7.	DIMENSION "A"	DIMENSION "B"
197114201	19711-4201	-	LOOSE	TIN/LEAD	.300	.250
197114203	19711-4203	-	STRIP	TIN/LEAD	.300	.250



ISOMETRIC VIEW



PROGRESSION



CUSTOMER DRAWING

- NOTES:
1. BARE EDGES PERMISSIBLE AT CARRIER CUT OFF.
 2. MATERIAL: BRASS.
 3. MATERIAL THICKNESS: .032 ±.001/(0.813 ±0.03)
 4. TAB CONFORMS TO NEMA SPECIFICATIONS.
 5. ALL DIMENSIONS AND NOTES ARE REFERENCE DIMENSIONS ONLY UNLESS NOTED.
 6. PLATING: THICKNESS: 90/10 TIN/LEAD: 150 μin(3.81 μm) MIN THICKNESS.
 7. FINISH: MATTE

MOVED LOGO FARSD EC No. ETC2002-0182 DRAWING: 02/01/08 CHK: HEB 02/01/08 APPR: RWD 02/01/08	QUALITY SYMBOLS MAJOR = 0 CRITICAL = 0	GENERAL TOLERANCES: (UNLESS SPECIFIED) mm INCH		SCALE: 4:1	DESIGN UNITS: <input type="checkbox"/> mm <input checked="" type="checkbox"/> INCH	DIMENSIONS: <input type="checkbox"/> mm <input checked="" type="checkbox"/> INCH <input type="checkbox"/> mm ONLY	SHT REV REVISE ON CAD ONLY
		4 PLACES ±0. ±. 3 PLACES ±0. ±.005 2 PLACES ±0.13 ±.01 1 PLACE ±0.25 ±.		DRAWN BY & DATE JH 98/04/28	CHECKED BY & DATE RWD 98/04/28		TITLE: QUICK DISCONNECT PCB MOUNTABLE .250 X .032 TAB
REV DESCRIPTION	G	ANGULAR: ± 1/2 °		APPROVED BY & DATE RWD 98/04/28	MATERIAL NO. DRAWING NO. SEE CHART SD-19711-420		SHEET NO. 1 OF 1
		DRAFT WHERE APPLICABLE MUST REMAIN WITHIN DIMENSIONS		CAD FILENAME SD-19711-420.DGN		MOLEX INCORPORATED	