

**PLEASE CHECK WWW.MOLEX.COM FOR LATEST PART INFORMATION**

**Part Number:** [0906350101](#)  
**Status:** **Active**  
**Overview:** [qf50](#)  
**Description:** 1.27mm (.050") Pitch QF-50™, Single Beam, Female Housing, Gold (Au) Flash, 10 Circuits

**Documents:**

[3D Model](#) [Product Specification PS-99020-0015 \(PDF\)](#)  
[Drawing \(PDF\)](#) [RoHS Certificate of Compliance \(PDF\)](#)

**Agency Certification**

CSA LR19980  
 UL E29179

**General**

Product Family Ribbon Cable / Wire Trap Connectors  
 Series [90635](#)  
 Component Type Housing  
 Glow-Wire Compliant No  
 Overview [qf50](#)  
 Product Name QF-50™

**Physical**

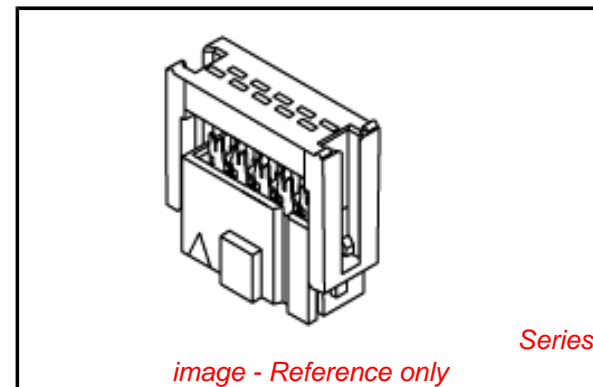
Circuits (Loaded) 10  
 Color - Resin Black  
 Entry Angle 90° Angle  
 Flammability 94V-0  
 Lock to Mating Part None  
 Material - Metal Phosphor Bronze  
 Material - Plating Mating Gold  
 Material - Plating Termination Tin  
 Material - Resin Polyester  
 Number of Rows 2  
 PCB Retention None  
 Packaging Type Tube  
 Pitch - Mating Interface (in) 0.050 In  
 Pitch - Mating Interface (mm) 1.27 mm  
 Plating min: Mating (µin) 1  
 Plating min: Mating (µm) 0.02  
 Plating min: Termination (µin) 39  
 Plating min: Termination (µm) 1  
 Polarized to Mating Part No  
 Shrouded Fully  
 Stackable No  
 Temperature Range - Operating -25°C to +85°C  
 Termination Interface: Style IDT or Pierce  
 Wire Insulation Diameter 1.14mm (.045") max.  
 Wire Size AWG 26, 28  
 Wire/Cable Type Ribbon Cable

**Electrical**

Current - Maximum per Contact 1A  
 Voltage - Maximum 250V AC/DC

**Material Info**

**Reference - Drawing Numbers**



**EU RoHS** **China RoHS**

**Compliance Status**

**Not Reviewed**

**REACH SVHC**

**Not Reviewed**

**Halogen-Free**

**Status**

**Not Reviewed**

**Need more information on product environmental compliance?**

Email [productcompliance@molex.com](mailto:productcompliance@molex.com)  
 For a multiple part number RoHS Certificate of Compliance, [click here](#)

Please visit the [Contact Us](#) section for any non-product compliance questions.

**Search Parts in this Series**

[90635Series](#)

**Mates With**

[90663](#)

**Use With**

[90170](#)

Packaging Specification  
Product Specification  
Sales Drawing

PK-90635-001  
PS-99020-0015  
SDA-90635

This document was generated on 05/31/2010

**PLEASE CHECK [WWW.MOLEX.COM](http://WWW.MOLEX.COM) FOR LATEST PART INFORMATION**

NOTES: 1. MATERIAL:

HOUSING: POLYESTER, G.F. (UL 94V-0), COLOUR - BLACK.  
 TERMINAL: PHOSPHOR BRONZE.

2. TERMINAL PLATING:

- 90635-\*\*\*1 : CONTACT AREA: GOLD FLASH (0.1um)/ 4uIn MIN.  
 I.D. AREA: TIN (1um)/ 39uIn MIN. OVER  
 NICKEL (1um)/ 39uIn MIN.
- 90635-\*\*\*2 : CONTACT AREA: GOLD (0.76um)/ 30uIn MIN  
 I.D. AREA: TIN (1um)/ 39uIn MIN. OVER  
 NICKEL (1um)/ 39uIn MIN.
- 90635-\*\*\*3 : CONTACT AREA: GOLD (0.38um)/ 15uIn MIN  
 I.D. AREA: TIN (1um)/ 39uIn MIN. OVER  
 NICKEL (1um)/ 39uIn MIN.
- 90635-\*\*\*4 : CONTACT AREA: GOLD (0.51um)/ 20uIn MIN  
 I.D. AREA: TIN (1um)/ 39uIn MIN. OVER  
 NICKEL (1um)/ 39uIn MIN.. 20 & 50 CIRCUIT SIZES ONLY

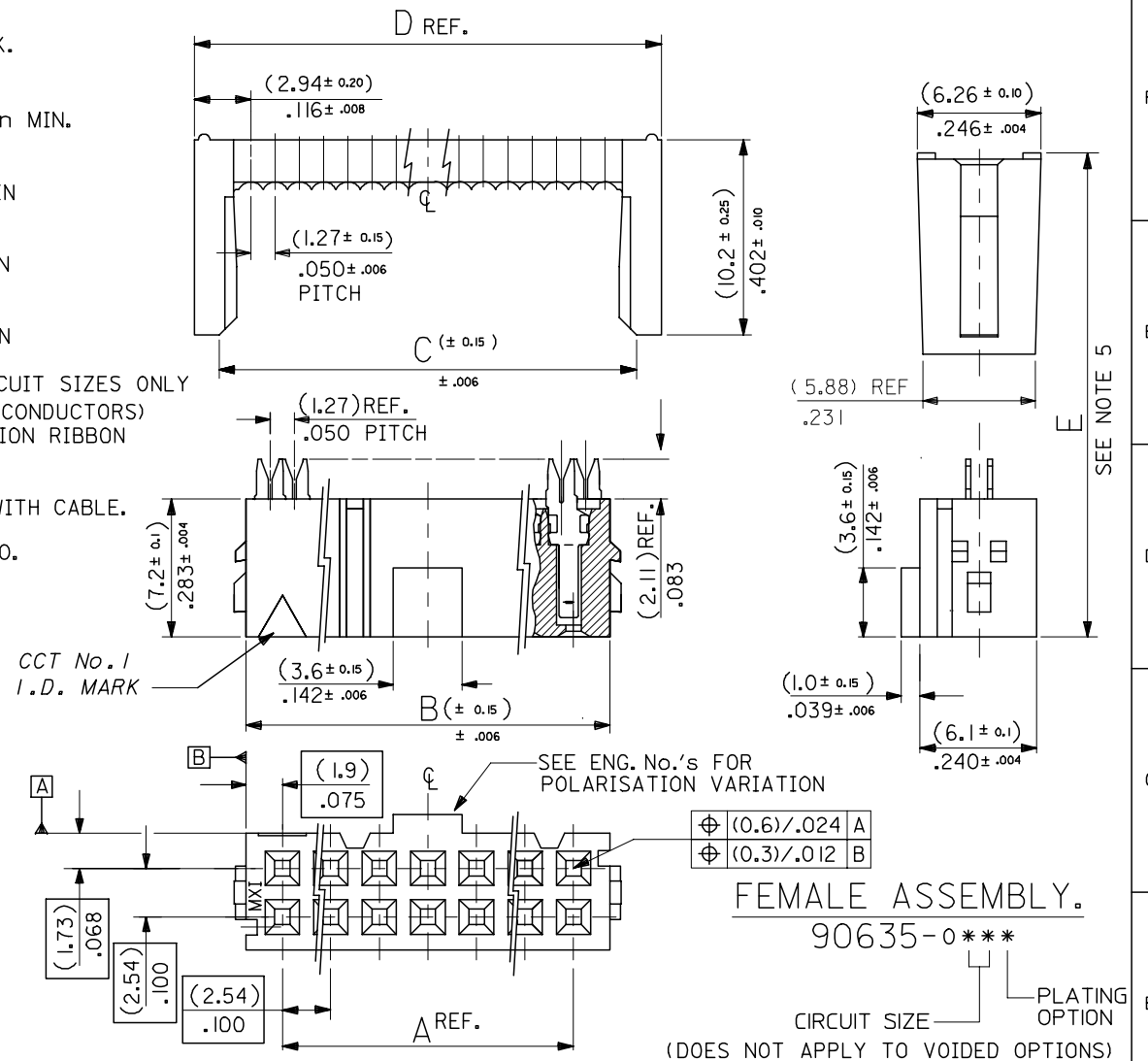
3. FOR USE WITH No. 26 & 28 AWG STRANDED WIRE (7 CONDUCTORS)  
 AND No. 28 SOLID WIRE 1.14/(.045) DIA. MAX. INSULATION RIBBON  
 CABLE WITH 1.27/(.05) CENTERS.

4. MATING STRAIN RELIEF: MOLEX No. 90170.

5. DIMENSION "E" IS TOTAL HEIGHT AFTER ASSEMBLED WITH CABLE.  
 E = 10.5/(.413) REF. WITHOUT STRAIN RELIEF.  
 E = (15.2)/.598 MAX. WITH STRAIN RELIEF No. 90170.  
 (14.5)/.571 REF. WHEN COMPRESSED .

6. FOR PRODUCT SPECIFICATION, SEE PS 99020-0015.

|                |            | (78.74)          | (82.54)          | (83.31)          | (85.88)          |
|----------------|------------|------------------|------------------|------------------|------------------|
| 64             | 90635-*64* | 3.100            | 3.250            | 3.280            | 3.381            |
| 60             | 90635-*60* | (73.66)<br>2.900 | (77.46)<br>3.050 | (78.23)<br>3.080 | (80.80)<br>3.181 |
| 50             | 90635-*50* | (60.96)<br>2.400 | (64.76)<br>2.55  | (65.53)<br>2.580 | (68.10)<br>2.681 |
| 40             | 90635-*40* | (48.26)<br>1.900 | (52.06)<br>2.050 | (52.83)<br>2.080 | (55.40)<br>2.181 |
| 34             | 90635-*34* | (40.64)<br>1.600 | (44.44)<br>1.750 | (45.21)<br>1.780 | (47.78)<br>1.881 |
| 30             | 90635-*30* | (35.56)<br>1.400 | (39.36)<br>1.550 | (40.13)<br>1.580 | (42.70)<br>1.681 |
| 26             | 90635-*26* | (30.48)<br>1.200 | (34.28)<br>1.350 | (35.05)<br>1.380 | (37.62)<br>1.481 |
| 24             | 90635-*24* | (27.94)<br>1.100 | (31.74)<br>1.250 | (32.51)<br>1.280 | (35.08)<br>1.381 |
| 20             | 90635-*20* | (22.86)<br>.900  | (26.66)<br>1.050 | (27.43)<br>1.080 | (30.00)<br>1.181 |
| 16             | 90635-*16* | (17.78)<br>.700  | (21.58)<br>.850  | (22.35)<br>.880  | (24.92)<br>.981  |
| 14             | 90635-*14* | (15.24)<br>.600  | (19.04)<br>.750  | (19.81)<br>.780  | (22.38)<br>.881  |
| 10             | 90635-*10* | (10.16)<br>.400  | (13.96)<br>.550  | (14.73)<br>.580  | (17.30)<br>.681  |
| NO. OF<br>CKT. | ENG. NO.   | A                | B                | C                | D REF.           |



FEMALE ASSEMBLY.  
 90635-0\*\*\*  
 PLATING OPTION  
 CIRCUIT SIZE  
 (DOES NOT APPLY TO VOIDED OPTIONS)

| REMOVED POLARISATION EC NO: E2007-0495 | DRWN:DBYRNES 2006/12/06 | CHKD: 2006/12/07 | APPR:EDMAMONY 2006/12/07 | DESCRIPTION | QUALITY SYMBOLS | GENERAL TOLERANCES (UNLESS SPECIFIED) |        | DIMENSION STYLE |   | SCALE        | DESIGN UNITS                          | THIRD ANGLE PROJECTION |
|--|-------------------------|------------------|--------------------------|-------------|-----------------|---------------------------------------|--------|-----------------|---|--------------|---------------------------------------|------------------------|
|  |                         |                  |                          |             |                 | MM                                    | INCH   | MM/IN           | MM/IN   |              |                                       |                        |
|  |                         |                  |                          |             |                 | 4 PLACES                              | ± ---  | ± ---           | DRAWN BY  | DATE         | TITLE                                 |                        |
|  |                         |                  |                          |             |                 | 3 PLACES                              | ± ---  | ± ---           | POB   | 1990/09/25   | QIK FLECS SINGLE BEAM FEMALE ASSEMBLY |                        |
|  |                         |                  |                          |             |                 | 2 PLACES                              | ± ---  | ± ---           | CHECKED BY  | DATE         |                                       |                        |
|  |                         |                  |                          |             |                 | 1 PLACE                               | ± ---  | ± ---           | JDENNEHY  | 2005/08/10   |                                       |                        |
|  |                         |                  |                          |             |                 | ANGULAR                               | ± ---° | ± ---°          | APPROVED BY   | DATE         |                                       |                        |
|  |                         |                  |                          |             |                 |                                       |        |                 | JDENNEHY  | 2005/08/10   | MOLEX MOLEX INCORPORATED              |                        |
|  |                         |                  |                          |             |                 |                                       |        |                 | MATERIAL NO.  | DOCUMENT NO. |                                       | SHEET NO.              |
|  |                         |                  |                          |             |                 |                                       |        |                 | SEE CHART   | SDA-90635    |                                       | 1 OF 3                 |
|  |                         |                  |                          |             |                 |                                       |        |                 | THIS DRAWING CONTAINS INFORMATION THAT IS PROPRIETARY TO MOLEX INCORPORATED AND SHOULD NOT BE USED WITHOUT WRITTEN PERMISSION |              |                                       |                        |