

**PLEASE CHECK WWW.MOLEX.COM FOR LATEST PART INFORMATION**

**Part Number:** [0197114203](#)  
**Status:** **Active**  
**Description:** PCB Tab Right Angle Quick Disconnect, Male, for Wire, Metal Strip, Tab 6.35mm (.250") x 0.81mm (.032")

**Documents:**

[Drawing \(PDF\)](#) [RoHS Certificate of Compliance \(PDF\)](#)  
[Product Specification PS-19902-010 \(PDF\)](#)

**Agency Certification**

UL E79133

**General**

Product Family Quick Disconnects  
 Series [19711](#)  
 Crimp Quality Equipment Yes  
 Product Name PCB Tab  
 Type Quick Disconnect

**Physical**

Barrel Type N/A  
 Gender Male  
 Glow-Wire Compliant No  
 Insulation None  
 Lock to Mating Part None  
 Material - Metal Brass  
 Orientation PCB Flag Tab  
 Packaging Type Reel  
 Polarized to Mating Part No  
 Tab Thickness 0.81mm (.032")  
 Tab Width 6.35mm (.250")  
 Wire Insulation Diameter N/A  
 Wire Size AWG N/A

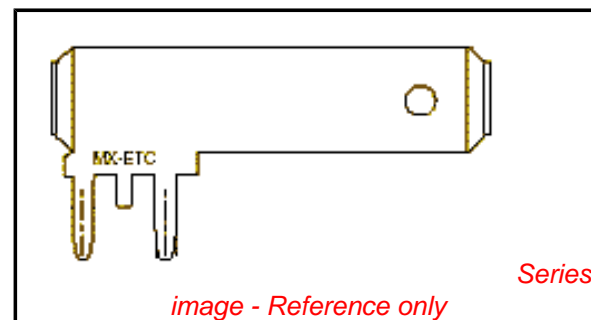
**Electrical**

Voltage - Maximum N/A

**Material Info**

**Reference - Drawing Numbers**

Product Specification PS-19902-010  
 Sales Drawing SD-19711-420



**EU RoHS**

**ELV and RoHS Compliant**  
**REACH SVHC Contains SVHC: No**  
**Halogen-Free Status Not Reviewed**

**China RoHS**



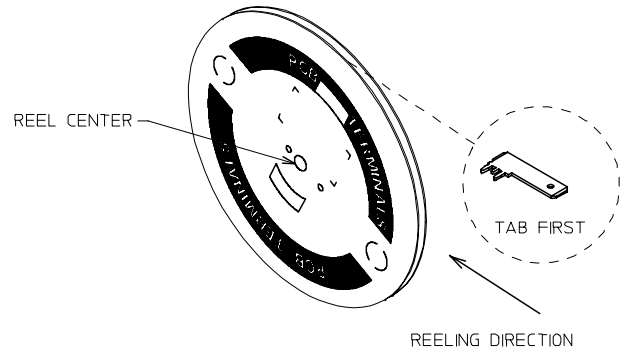
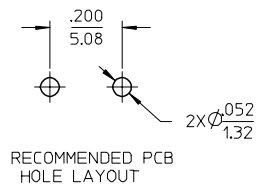
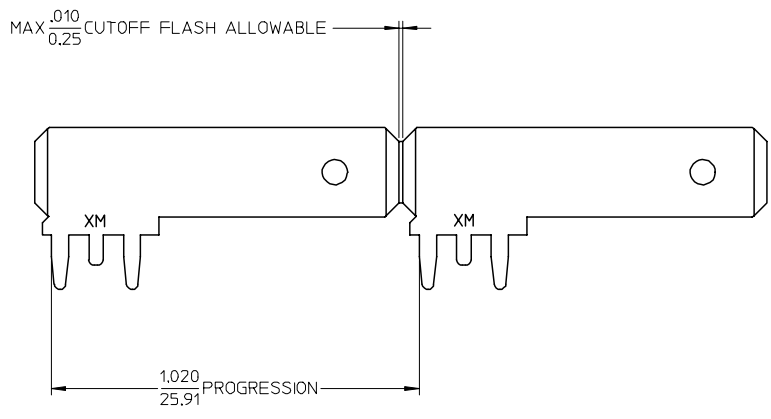
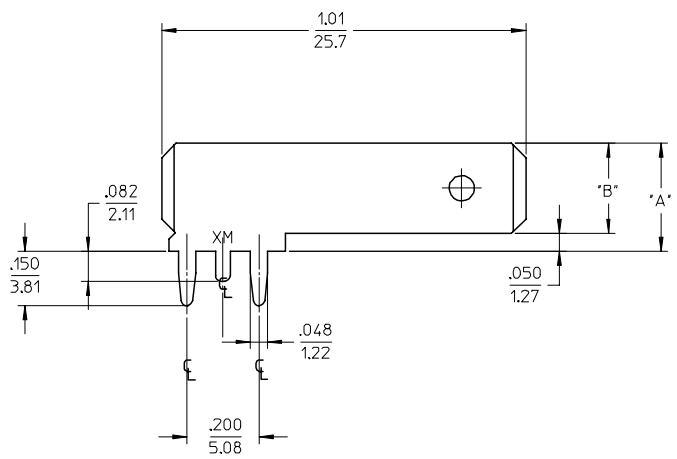
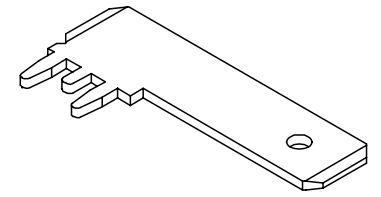
**Need more information on product environmental compliance?**

Email [productcompliance@molex.com](mailto:productcompliance@molex.com)  
 For a multiple part number RoHS Certificate of Compliance, [click here](#)

Please visit the [Contact Us](#) section for any non-product compliance questions.

**Search Parts in this Series**  
[19711Series](#)

MATERIAL NUMBER	ENGINEERING NUMBER	CARRIER	DIMENSION "A"	DIMENSION "B"
197114203	19711-4203	STRIP	.300/7.62	.250/6.35



- NOTES:
1. BARE EDGES PERMISSIBLE AT CARRIER CUT OFF.
  2. MATERIAL: BRASS C26000 (.032/0.81) THICK.
  3. TAB CONFORMS TO NEMA SPECIFICATIONS.
  4. ALL DIMENSIONS AND NOTES REFERENCE UNLESS OTHERWISE NOTED.
  5. PLATING: MATTE TIN, 150µIN/3.81µmm MINIMUM THICKNESS OVER NICKEL 50µIN/1.25µmm MINIMUM THICKNESS.
  6. REF.: 5,000 MINIMUM PARTS PER REEL, REEL HAS 24" DIAMETER REEL WITH A 1.25" DIAMETER CENTER HOLE.

EC NO: ETC2003-0292 DRWN:DMYRICK 2004/05/13 CHKD:H.BRETZE 2004/05/14 APPR:RDEROSS 2004/05/14	QUALITY SYMBOLS ▽=0 ▽=0	GENERAL TOLERANCES (UNLESS SPECIFIED)		SCALE 4:1	DESIGN UNITS INCH	THIRD ANGLE PROJECTION	REVISE ON CAD ONLY
		4 PLACES ± --- ± --- 3 PLACES ± --- ± .005 2 PLACES ± 0.13 ± .01 1 PLACE ± 0.25 ± ---	DIMENSION STYLE IN/MM	TITLE QUICK DISCONNECT PCB MOUNTABLE .250 X .032 TAB			
		DRAFT WHERE APPLICABLE MUST REMAIN WITHIN DIMENSIONS	DRAWN BY EDB DATE 11/05/96 CHECKED BY JH DATE 11/05/96 APPROVED BY RWD DATE 11/05/96	MOLEX INCORPORATED			
		THIS DRAWING CONTAINS INFORMATION THAT IS PROPRIETARY TO MOLEX INCORPORATED AND SHOULD NOT BE USED WITHOUT WRITTEN PERMISSION	MATERIAL NO. SEE CHART DOCUMENT NO. SD-19711-420	SHEET NO. 1 OF 1			