

**Document Title**

**256Kx36 & 512Kx18-Bit Flow Through NtRAM™**

**Revision History**

| <u>Rev. No.</u> | <u>History</u>   | <u>Draft Date</u> | <u>Remark</u> |
|-----------------|--|-------------------|---------------|
| 0.0             | 1. Initial document.   | April. 09. 1998   | Preliminary   |
| 0.1             | Modify from $\overline{ADV}$ to ADV at timing.<br>Add the Trade Mark( NtRAM™)  | June. 02. 1998    | Preliminary   |
| 0.2             | 1. Changed t <sub>CD</sub> from 8.0ns to 8.5ns at -8<br>2. Changed t <sub>CYC</sub> from 13.0ns to 12.0ns at -10<br>3. Changed DC condition at I <sub>CC</sub> and parameters<br>I <sub>CC</sub> ; from 240mA to 260mA at -10,<br>I <sub>SB1</sub> ; from 10mA to 30mA,<br>I <sub>SB2</sub> ; from 10mA to 30mA. | Sep. 09. 1998     | Preliminary   |
| 0.3             | 1. ADD 119BGA(7x17 Ball Grid Array Package) .<br>2. ADD x32 organization   | Oct. 15. 1998     | Preliminary   |
| 0.4             | Add V <sub>DDQ</sub> Supply voltage( 2.5V )  | Dec. 10. 1998     | Preliminary   |
| 0.5             | Changed V <sub>OL</sub> Max value from 0.2V to 0.4V at 2.5V I/O.   | Dec. 23. 1998     | Preliminary   |
| 1.0             | 1. Final Spec Release.<br>2. Remove x32 organization.  | Jan. 29. 1999     | Final         |
| 2.0             | 1. Remove V <sub>DDQ</sub> Supply voltage( 2.5V I/O )  | Feb. 25. 1999     | Final         |
| 3.0             | 1. Add V <sub>DDQ</sub> Supply voltage( 2.5V I/O )   | May. 13. 1999     | Final         |
| 4.0             | 1. Add t <sub>CYC</sub> 117MHz.<br>2. Remove 119BGA package.<br>3. Change t <sub>CYC</sub> from 12ns to 10ns at -9.<br>4. Changed DC condition at I <sub>CC</sub> and parameters<br>I <sub>CC</sub> ; from 300mA to 280mA at -8,   | Nov. 19. 1999     | Final         |

The attached data sheets are prepared and approved by SAMSUNG Electronics. SAMSUNG Electronics CO., LTD. reserve the right to change the specifications. SAMSUNG Electronics will evaluate and reply to your requests and questions on the parameters of this device. If you have any questions, please contact the SAMSUNG branch office near your office, call or contact Headquarters.

**256Kx36 & 512Kx18-Bit Flow Through NtRAM™**

**FEATURES**

- 3.3V+0.165V/-0.165V Power Supply.
- I/O Supply Voltage 3.3V+0.165V/-0.165V for 3.3V I/O or 2.5V+0.4V/-0.125V for 2.5V I/O
- Byte Writable Function.
- Enable clock and suspend operation.
- Single READ/WRITE control pin.
- Self-Timed Write Cycle.
- Three Chip Enable for simple depth expansion with no data contention .
- A interleaved burst or a linear burst mode.
- Asynchronous output enable control.
- Power Down mode.
- TTL-Level Three-State Outputs.
- 100-TQFP-1420A .

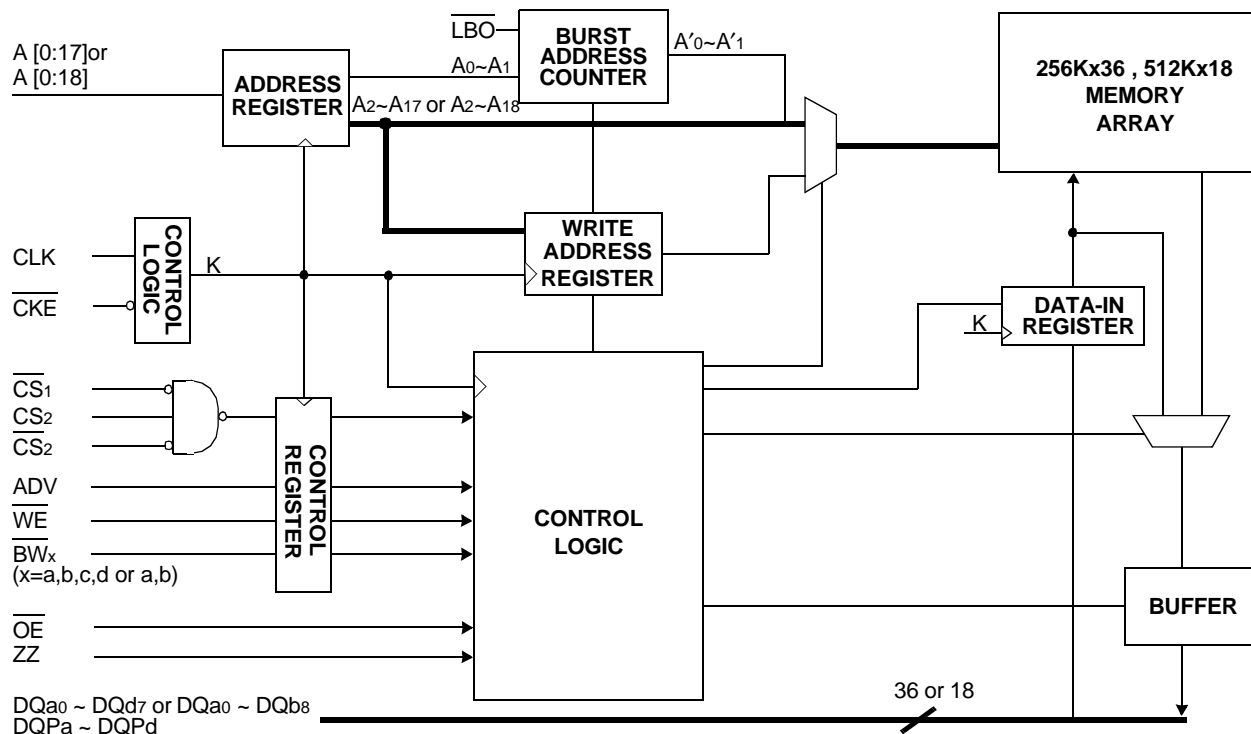
**GENERAL DESCRIPTION**

The K7M803625M and K7M801825M are 9,437,184-bit Synchronous Static SRAMs. The NtRAM™, or No Turnaround Random Access Memory utilizes all bandwidth in any combination of operating cycles. Address, data inputs, and all control signals except output enable and linear burst order are synchronized to input clock. Burst order control must be tied "High or Low". Asynchronous inputs include the sleep mode enable(ZZ). Output Enable controls the outputs at any given time. Write cycles are internally self-timed and initiated by the rising edge of the clock input. This feature eliminates complex off-chip write pulse generation and provides increased timing flexibility for incoming signals. For read cycles, Flow-Through SRAM allows output data to simply flow freely from the memory array. The K7M803625M and K7M801825M are implemented with SAMSUNG's high performance CMOS technology and is available in 100pin TQFP packages. Multiple power and ground pins minimize ground bounce.

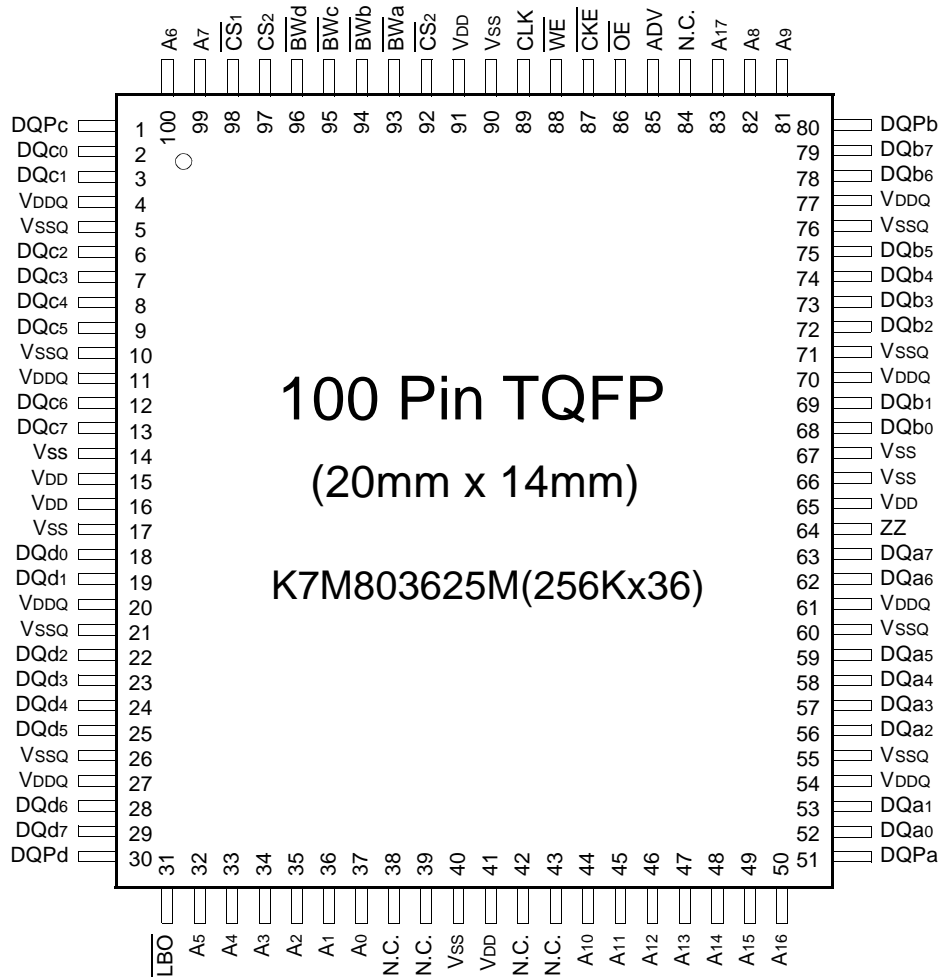
**FAST ACCESS TIMES**

| Parameter                 | Symbol           | -80 | -85 | -90 | -10  | Unit |
|---------------------------|------------------|-----|-----|-----|------|------|
| Cycle Time                | t <sub>CYC</sub> | 8.5 | 10  | 10  | 12   | ns   |
| Clock Access Time         | t <sub>CD</sub>  | 8.0 | 8.5 | 9.0 | 10.0 | ns   |
| Output Enable Access Time | t <sub>OE</sub>  | 3.5 | 3.5 | 3.5 | 3.5  | ns   |

**LOGIC BLOCK DIAGRAM**



**PIN CONFIGURATION(TOP VIEW)**

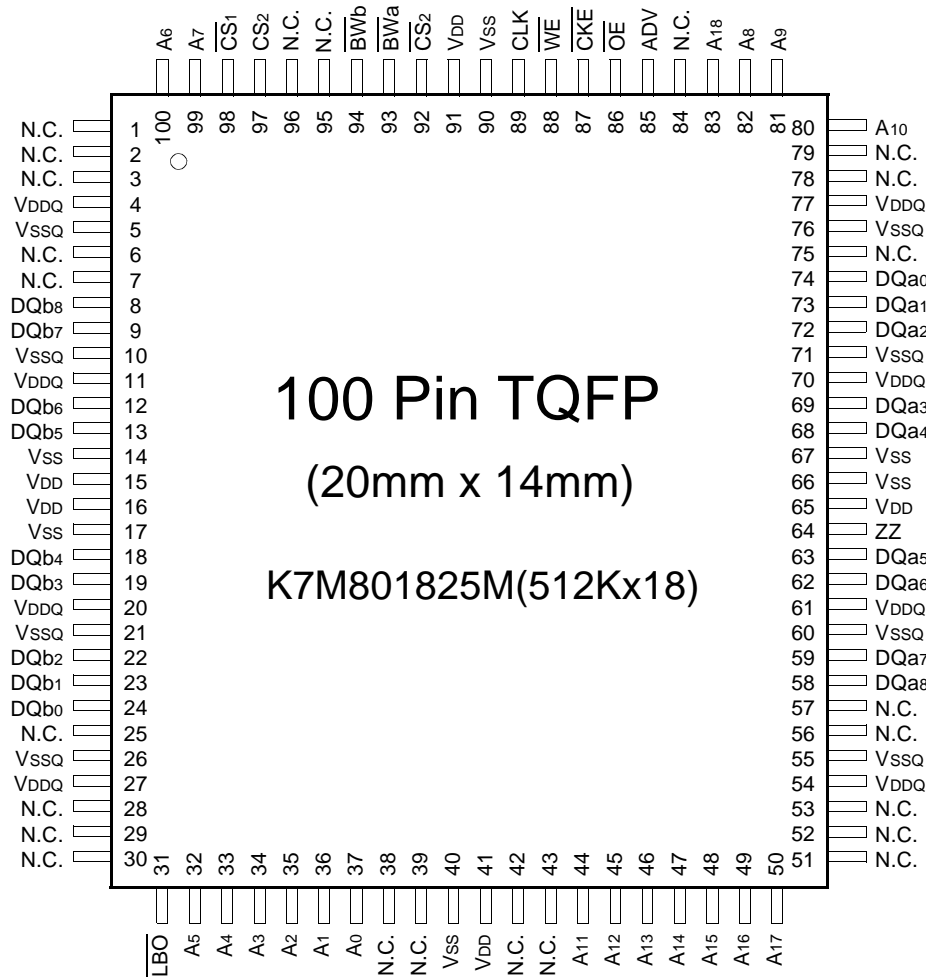


**PIN NAME**

| SYMBOL         | PIN NAME                 | TQFP PIN NO.   | SYMBOL  | PIN NAME                              | TQFP PIN NO.            |
|----------------|--------------------------|--|---------|---------------------------------------|-------------------------|
| A0 - A17       | Address Inputs           | 32,33,34,35,36,37,44<br>45,46,47,48,49,50,81<br>82,83,99,100 | VDD     | Power Supply(+3.3V)                   | 15,16,41,65,91          |
|                |                          |  | VSS     | Ground                                | 14,17,40,66,67,90       |
|                |                          |  | N.C.    | No Connect                            | 38,39,42,43,84          |
| ADV            | Address Advance/Load     | 85   | DQa0~a7 | Data Inputs/Outputs                   | 52,53,56,57,58,59,62,63 |
| WE             | Read/Write Control Input | 88   | DQb0~b7 |                                       | 68,69,72,73,74,75,78,79 |
| CLK            | Clock                    | 89   | DQc0~c7 |                                       | 2,3,6,7,8,9,12,13       |
| CKE            | Clock Enable             | 87   | DQd0~d7 |                                       | 18,19,22,23,24,25,28,29 |
| CS1            | Chip Select              | 98   | DQPa~Pd |                                       | 51,80,1,30              |
| CS2            | Chip Select              | 97   |         |                                       |                         |
| CS2            | Chip Select              | 92   |         |                                       |                         |
| BWx(x=a,b,c,d) | Byte Write Inputs        | 93,94,95,96  | VDDQ    | Output Power Supply<br>(2.5V or 3.3V) | 4,11,20,27,54,61,70,77  |
| OE             | Output Enable            | 86   | VSSQ    | Output Ground                         | 5,10,21,26,55,60,71,76  |
| ZZ             | Power Sleep Mode         | 64   |         |                                       |                         |
| LBO            | Burst Mode Control       | 31   |         |                                       |                         |

Notes : 1. The pin 84 is reserved for address bit for the 16Mb NtRAM.  
2. A0 and A1 are the two least significant bits(LSB) of the address field and set the internal burst counter if burst is desired.

**PIN CONFIGURATION(TOP VIEW)**



**PIN NAME**

| SYMBOL     | PIN NAME                 | TQFP PIN NO.  | SYMBOL  | PIN NAME                              | TQFP PIN NO.   |
|------------|--------------------------|---|---------|---------------------------------------|--|
| A0 - A18   | Address Inputs           | 32,33,34,35,36,37,44<br>45,46,47,48,49,50,80<br>81,82,83,99,100 | VDD     | Power Supply(+3.3V)                   | 15,16,41,65,91   |
| ADV        | Address Advance/Load     | 85  | VSS     | Ground                                | 14,17,40,66,67,90  |
| WE         | Read/Write Control Input | 88  | N.C.    | No Connect                            | 1,2,3,6,7,25,28,29,30,<br>38,39,42,43,51,52,53,<br>56,57,75,78,79,84,95,96 |
| CLK        | Clock                    | 89  | DQa0~a8 | Data Inputs/Outputs                   | 58,59,62,63,68,69,72,73,74   |
| CKE        | Clock Enable             | 87  | DQb0~b8 |                                       | 8,9,12,13,18,19,22,23,24   |
| CS1        | Chip Select              | 98  | VDDQ    | Output Power Supply<br>(2.5V or 3.3V) | 4,11,20,27,54,61,70,77   |
| CS2        | Chip Select              | 97  | VSSQ    | Output Ground                         | 5,10,21,26,55,60,71,76   |
| CS2        | Chip Select              | 92  |         |                                       |  |
| BWx(x=a,b) | Byte Write Inputs        | 93,94   |         |                                       |  |
| OE         | Output Enable            | 86  |         |                                       |  |
| ZZ         | Power Sleep Mode         | 64  |         |                                       |  |
| LBO        | Burst Mode Control       | 31  |         |                                       |  |

**Notes :** 1. The pin 84 is reserved for address bit for the 16Mb NtRAM.  
 2. A0 and A1 are the two least significant bits(LSB) of the address field and set the internal burst counter if burst is desired.

**FUNCTION DESCRIPTION**

The K7M803625M and K7M801825M are NfRAM™ designed to sustain 100% bus bandwidth by eliminating turnaround cycle when there is transition from Read to Write, or vice versa.

All inputs (with the exception of OE, LBO and ZZ) are synchronized to rising clock edges.

All read, write and deselect cycles are initiated by the ADV input. Subsequent burst addresses can be internally generated by the burst advance pin (ADV). ADV should be driven to Low once the device has been deselected in order to load a new address for next operation.

Clock Enable(CKE) pin allows the operation of the chip to be suspended as long as necessary. When CKE is high, all synchronous inputs are ignored and the internal device registers will hold their previous values.

NfRAM™ latches external address and initiates a cycle, when CKE, ADV are driven to low and all three chip enables(CS1, CS2, CS2) are active .

Output Enable(OE) can be used to disable the output at any given time.

Read operation is initiated when at the rising edge of the clock, the address presented to the address inputs are latched in the address register, CKE is driven low, all three chip enables(CS1, CS2, CS2) are active, the write enable input signals WE are driven high, and ADV driven low. Data appears at the outputs within the same clock cycle as the address for the data. Also during read operation OE must be driven low for the device to drive out the requested data.

Write operation occurs when WE is driven low at the rising edge of the clock. BW[d:a] can be used for byte write operation. The Flow Through NfRAM™ uses a late write cycle to utilize 100% of the bandwidth.

At the first rising edge of the clock, WE and address are registered, and the data associated with that address is required one cycle later.

Subsequent addresses are generated by ADV High for the burst access as shown below. The starting point of the burst sequence is provided by the external address. The burst address counter wraps around to its initial state upon completion.

The burst sequence is determined by the state of the LBO pin. When this pin is low, linear burst sequence is selected.

And when this pin is high, Interleaved burst sequence is selected.

During normal operation, ZZ must be driven low. When ZZ is driven high, the SRAM will enter a Power Sleep Mode after 2 cycles. At this time, internal state of the SRAM is preserved. When ZZ returns to low, the SRAM normally operates after 2 cycles of wake up time.

**BURST SEQUENCE TABLE**

(Interleaved Burst, LBO=High)

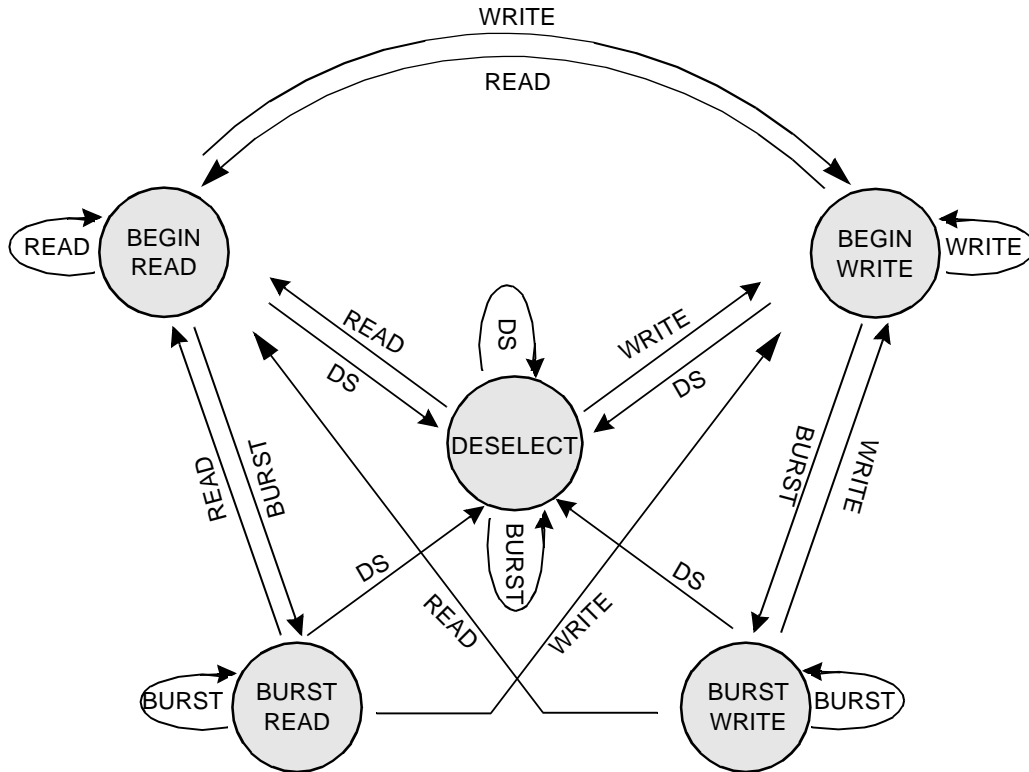
| LBO PIN | HIGH           | Case 1 |    | Case 2 |    | Case 3 |    | Case 4 |    |
|---------|----------------|--------|----|--------|----|--------|----|--------|----|
|         |                | A1     | A0 | A1     | A0 | A1     | A0 | A1     | A0 |
|         | First Address  | 0      | 0  | 0      | 1  | 1      | 0  | 1      | 1  |
|         | ↓              | 0      | 1  | 0      | 0  | 1      | 1  | 1      | 0  |
|         | ↓              | 1      | 0  | 1      | 1  | 0      | 0  | 0      | 1  |
|         | Fourth Address | 1      | 1  | 1      | 0  | 0      | 1  | 0      | 0  |

(Linear Burst, LBO=Low)

| LBO PIN | LOW            | Case 1 |    | Case 2 |    | Case 3 |    | Case 4 |    |
|---------|----------------|--------|----|--------|----|--------|----|--------|----|
|         |                | A1     | A0 | A1     | A0 | A1     | A0 | A1     | A0 |
|         | First Address  | 0      | 0  | 0      | 1  | 1      | 0  | 1      | 1  |
|         | ↓              | 0      | 1  | 1      | 0  | 1      | 1  | 0      | 0  |
|         | ↓              | 1      | 0  | 1      | 1  | 0      | 0  | 0      | 1  |
|         | Fourth Address | 1      | 1  | 0      | 0  | 0      | 1  | 1      | 0  |

**Note :** 1. LBO pin must be tied to High or Low, and Floating State must not be allowed.

STATE DIAGRAM FOR NtRAM™



| COMMAND | ACTION   |
|---------|--|
| DS      | DESELECT                                       |
| READ    | BEGIN READ                                     |
| WRITE   | BEGIN WRITE                                    |
| BURST   | BEGIN READ<br>BEGIN WRITE<br>CONTINUE DESELECT |

Notes : 1. An IGNORE CLOCK EDGE cycle is not shown in the above diagram. This is because CKE HIGH only blocks the clock(CLK) input and does not change the state of the device.  
2. States change on the rising edge of the clock(CLK)

**TRUTH TABLES**

**SYNCHRONOUS TRUTH TABLE**

| $\overline{CS}_1$ | $\overline{CS}_2$ | $\overline{CS}_2$ | ADV | $\overline{WE}$ | $\overline{BW}_x$ | $\overline{OE}$ | $\overline{CKE}$ | CLK | ADDRESS ACCESSED | OPERATION                  |
|-------------------|-------------------|-------------------|-----|-----------------|-------------------|-----------------|------------------|-----|------------------|----------------------------|
| H                 | X                 | X                 | L   | X               | X                 | X               | L                | ↑   | N/A              | Not Selected               |
| X                 | L                 | X                 | L   | X               | X                 | X               | L                | ↑   | N/A              | Not Selected               |
| X                 | X                 | H                 | L   | X               | X                 | X               | L                | ↑   | N/A              | Not Selected               |
| X                 | X                 | X                 | H   | X               | X                 | X               | L                | ↑   | N/A              | Not Selected Continue      |
| L                 | H                 | L                 | L   | H               | X                 | L               | L                | ↑   | External Address | Begin Burst Read Cycle     |
| X                 | X                 | X                 | H   | X               | X                 | L               | L                | ↑   | Next Address     | Continue Burst Read Cycle  |
| L                 | H                 | L                 | L   | H               | X                 | H               | L                | ↑   | External Address | NOP/Dummy Read             |
| X                 | X                 | X                 | H   | X               | X                 | H               | L                | ↑   | Next Address     | Dummy Read                 |
| L                 | H                 | L                 | L   | L               | L                 | X               | L                | ↑   | External Address | Begin Burst Write Cycle    |
| X                 | X                 | X                 | H   | X               | L                 | X               | L                | ↑   | Next Address     | Continue Burst Write Cycle |
| L                 | H                 | L                 | L   | L               | H                 | X               | L                | ↑   | N/A              | NOP/Write Abort            |
| X                 | X                 | X                 | H   | X               | H                 | X               | L                | ↑   | Next Address     | Write Abort                |
| X                 | X                 | X                 | X   | X               | X                 | X               | H                | ↑   | Current Address  | Ignore Clock               |

- Notes :** 1. X means "Don't Care". 2. The rising edge of clock is symbolized by (↑).  
 3. A continue deselect cycle can only be entered if a deselect cycle is executed first.  
 4.  $\overline{WRITE} = L$  means Write operation in WRITE TRUTH TABLE.  
 $\overline{WRITE} = H$  means Read operation in WRITE TRUTH TABLE.  
 5. Operation finally depends on status of asynchronous input pins(ZZ and  $\overline{OE}$ ).

**WRITE TRUTH TABLE (x36)**

| $\overline{WE}$ | $\overline{BW}_a$ | $\overline{BW}_b$ | $\overline{BW}_c$ | $\overline{BW}_d$ | Operation       |
|-----------------|-------------------|-------------------|-------------------|-------------------|-----------------|
| H               | X                 | X                 | X                 | X                 | READ            |
| L               | L                 | H                 | H                 | H                 | WRITE BYTE a    |
| L               | H                 | L                 | H                 | H                 | WRITE BYTE b    |
| L               | H                 | H                 | L                 | H                 | WRITE BYTE c    |
| L               | H                 | H                 | H                 | L                 | WRITE BYTE d    |
| L               | L                 | L                 | L                 | L                 | WRITE ALL BYTES |
| L               | H                 | H                 | H                 | H                 | WRITE ABORT/NOP |

- Notes :** 1. X means "Don't Care".  
 2. All inputs in this table must meet setup and hold time around the rising edge of CLK(↑).

**WRITE TRUTH TABLE(x18)**

| $\overline{WE}$ | $\overline{BW}_a$ | $\overline{BW}_b$ | OPERATION       |
|-----------------|-------------------|-------------------|-----------------|
| H               | X                 | X                 | READ            |
| L               | L                 | H                 | WRITE BYTE a    |
| L               | H                 | L                 | WRITE BYTE b    |
| L               | L                 | L                 | WRITE ALL BYTES |
| L               | H                 | H                 | WRITE ABORT/NOP |

- Notes :** 1. X means "Don't Care".  
 2. All inputs in this table must meet setup and hold time around the rising edge of CLK(↑).

**ASYNCHRONOUS TRUTH TABLE**

| Operation  | ZZ | $\overline{OE}$ | I/O STATUS  |
|------------|----|-----------------|-------------|
| Sleep Mode | H  | X               | High-Z      |
| Read       | L  | L               | DQ          |
|            | L  | H               | High-Z      |
| Write      | L  | X               | Din, High-Z |
| Deselected | L  | X               | High-Z      |

**Notes**

1. X means "Don't Care".
2. Sleep Mode means power Sleep Mode of which stand-by current does not depend on cycle time.
3. Deselected means power Sleep Mode of which stand-by current depends on cycle time.

**ABSOLUTE MAXIMUM RATINGS\***

| PARAMETER                                | SYMBOL | RATING      | UNIT |
|--|--------|-------------|------|
| Voltage on VDD Supply Relative to Vss    | VDD    | -0.3 to 4.6 | V    |
| Voltage on Any Other Pin Relative to Vss | VIN    | -0.3 to 4.6 | V    |
| Power Dissipation                        | Pd     | 1.4         | W    |
| Storage Temperature                      | TSTG   | -65 to 150  | °C   |
| Operating Temperature                    | TOPR   | 0 to 70     | °C   |
| Storage Temperature Range Under Bias     | TBIAS  | -10 to 85   | °C   |

\*Notes : Stresses greater than those listed under "Absolute Maximum Ratings" may cause permanent damage to the device. This is a stress rating only and functional operation of the device at these or any other conditions above those indicated in the operating sections of this specification is not implied. Exposure to absolute maximum rating conditions for extended periods may affect reliability.

**OPERATING CONDITIONS at 3.3V I/O (0°C ≤ TA ≤ 70°C)**

| PARAMETER      | SYMBOL | MIN   | Typ. | MAX   | UNIT |
|----------------|--------|-------|------|-------|------|
| Supply Voltage | VDD    | 3.135 | 3.3  | 3.465 | V    |
|                | VDDQ   | 3.135 | 3.3  | 3.465 | V    |
| Ground         | VSS    | 0     | 0    | 0     | V    |

**OPERATING CONDITIONS at 2.5V I/O (0°C ≤ TA ≤ 70°C)**

| PARAMETER      | SYMBOL | MIN   | Typ. | MAX   | UNIT |
|----------------|--------|-------|------|-------|------|
| Supply Voltage | VDD    | 3.135 | 3.3  | 3.465 | V    |
|                | VDDQ   | 2.375 | 2.5  | 2.9   | V    |
| Ground         | VSS    | 0     | 0    | 0     | V    |

**CAPACITANCE\* (TA=25°C, f=1MHz)**

| PARAMETER          | SYMBOL | TEST CONDITION | MIN | MAX | UNIT |
|--------------------|--------|----------------|-----|-----|------|
| Input Capacitance  | CIN    | VIN=0V         | -   | 6   | pF   |
| Output Capacitance | COUT   | VOUT=0V        | -   | 8   | pF   |

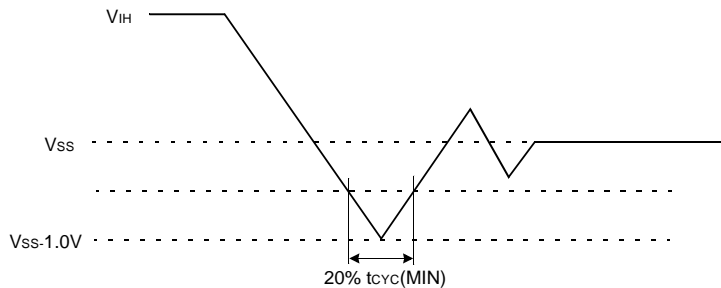
\*Note : Sampled not 100% tested.



**DC ELECTRICAL CHARACTERISTICS**(V<sub>DD</sub>=3.3V+0.165V/-0.165V, T<sub>A</sub>=0°C to +70°C)

| PARAMETER                        | SYMBOL   | TEST CONDITIONS  | MIN   | MAX                    | UNIT | NOTES |     |
|----------------------------------|--|--|-------|------------------------|------|-------|-----|
| Input Leakage Current(except ZZ) | I <sub>IL</sub>  | V <sub>DD</sub> =Max ; V <sub>IN</sub> =V <sub>SS</sub> to V <sub>DD</sub>   | -2    | +2                     | μA   |       |     |
| Output Leakage Current           | I <sub>OL</sub>  | Output Disabled,   | -2    | +2                     | μA   |       |     |
| Operating Current                | I <sub>CC</sub>  | Device Selected, I <sub>OUT</sub> =0mA,<br>ZZ≤V <sub>IL</sub> , Cycle Time ≥ t <sub>cy</sub> Min                       | -80   | -                      | 300  | mA    | 1,2 |
|                                  |  |  | -85   | -                      | 280  |       |     |
|                                  |  |  | -90   | -                      | 260  |       |     |
|                                  |  |  | -10   | -                      | 240  |       |     |
| Standby Current                  | I <sub>SB</sub>  | Device deselected, I <sub>OUT</sub> =0mA,<br>ZZ≤V <sub>IL</sub> , f=Max,<br>All Inputs≤0.2V or ≥ V <sub>DD</sub> -0.2V | -80   | -                      | 70   | mA    |     |
|                                  |  |  | -85   | -                      | 60   |       |     |
|                                  |  |  | -90   | -                      | 50   |       |     |
|                                  |  |  | -10   | -                      | 40   |       |     |
|                                  | I <sub>SB1</sub>   | Device deselected, I <sub>OUT</sub> =0mA, ZZ≤0.2V, f=0,<br>All Inputs=fixed (V <sub>DD</sub> -0.2V or 0.2V)            | -     | -                      | 30   | mA    |     |
| I <sub>SB2</sub>                 | Device deselected, I <sub>OUT</sub> =0mA, ZZ≥V <sub>DD</sub> -0.2V,<br>f=Max, All Inputs≤V <sub>IL</sub> or ≥V <sub>IH</sub> | -  | -     | 30                     | mA   |       |     |
| Output Low Voltage(3.3V I/O)     | V <sub>OL</sub>  | I <sub>OL</sub> =8.0mA   | -     | 0.4                    | V    |       |     |
| Output High Voltage(3.3V I/O)    | V <sub>OH</sub>  | I <sub>OH</sub> =-4.0mA  | 2.4   | -                      | V    |       |     |
| Output Low Voltage(2.5V I/O)     | V <sub>OL</sub>  | I <sub>OL</sub> =1.0mA   | -     | 0.4                    | V    |       |     |
| Output High Voltage(2.5V I/O)    | V <sub>OH</sub>  | I <sub>OH</sub> =-1.0mA  | 2.0   | -                      | V    |       |     |
| Input Low Voltage(3.3V I/O)      | V <sub>IL</sub>  |  | -0.3* | 0.8                    | V    |       |     |
| Input High Voltage(3.3V I/O)     | V <sub>IH</sub>  |  | 2.0   | V <sub>DD</sub> +0.5** | V    | 3     |     |
| Input Low Voltage(2.5V I/O)      | V <sub>IL</sub>  |  | -0.3* | 0.7                    | V    |       |     |
| Input High Voltage(2.5V I/O)     | V <sub>IH</sub>  |  | 1.7   | V <sub>DD</sub> +0.5** | V    | 3     |     |

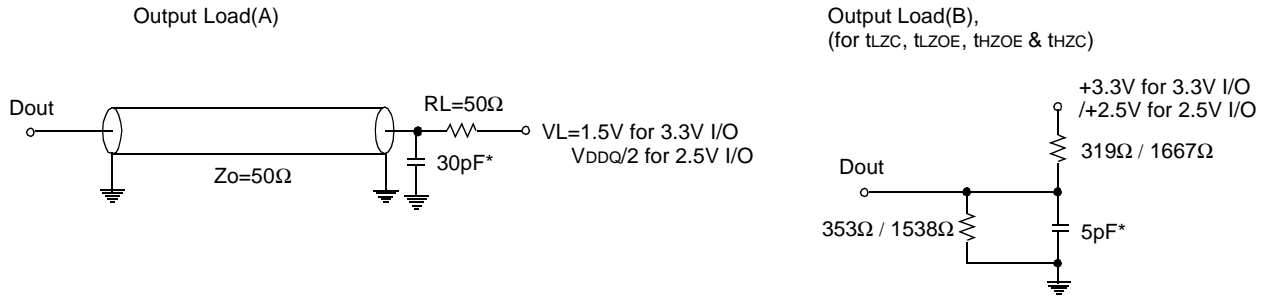
**Notes :** 1. Reference AC Operating Conditions and Characteristics for input and timing.  
2. Data states are all zero.  
3. In Case of I/O Pins, the Max. V<sub>IH</sub>=V<sub>DD</sub>+0.3V.



**TEST CONDITIONS**

(V<sub>DD</sub>=3.3V+0.165V/-0.165V, V<sub>DDQ</sub>=3.3V+0.165/-0.165V or V<sub>DD</sub>=3.3V+0.165V/-0.165V, V<sub>DDQ</sub>=2.5V+0.4V/-0.125V, T<sub>A</sub>=0to70°C)

| Parameter   | Value               |
|---|---------------------|
| Input Pulse Level(for 3.3V I/O)                               | 0 to 3.0V           |
| Input Pulse Level(for 2.5V I/O)                               | 0 to 2.5V           |
| Input Rise and Fall Time(Measured at 20% to 80% for 3.3V I/O) | 1.0V/ns             |
| Input Rise and Fall Time(Measured at 20% to 80% for 2.5V I/O) | 1.0V/ns             |
| Input and Output Timing Reference Levels for 3.3V I/O         | 1.5V                |
| Input and Output Timing Reference Levels for 2.5V I/O         | V <sub>DDQ</sub> /2 |
| Output Load   | See Fig. 1          |



\* Including Scope and Jig Capacitance

Fig. 1

**AC TIMING CHARACTERISTICS**( $V_{DD}=3.3V+0.165V/-0.165V$ ,  $T_A=0^{\circ}C$  to  $+70^{\circ}C$ )

| PARAMETER   | SYMBOL            | -80 |     | -85 |     | -90 |     | -10 |     | UNIT  |
|---|-------------------|-----|-----|-----|-----|-----|-----|-----|-----|-------|
|   |                   | MIN | MAX | MIN | MAX | MIN | MAX | MIN | MAX |       |
| Cycle Time  | t <sub>CYC</sub>  | 8.5 | -   | 10  | -   | 10  | -   | 12  | -   | ns    |
| Clock Access Time   | t <sub>CD</sub>   | -   | 8.0 | -   | 8.5 | -   | 9.0 | -   | 10  | ns    |
| Output Enable to Data Valid                                       | t <sub>OE</sub>   | -   | 3.5 | -   | 3.5 | -   | 3.5 | -   | 3.5 | ns    |
| Clock High to Output Low-Z  | t <sub>LZC</sub>  | 2.5 | -   | 2.5 | -   | 2.5 | -   | 2.5 | -   | ns    |
| Output Hold from Clock High                                       | t <sub>OH</sub>   | 2.5 | -   | 2.5 | -   | 2.5 | -   | 2.5 | -   | ns    |
| Output Enable Low to Output Low-Z                                 | t <sub>LZOE</sub> | 0   | -   | 0   | -   | 0   | -   | 0   | -   | ns    |
| Output Enable High to Output High-Z                               | t <sub>HZOE</sub> | -   | 3.5 | -   | 3.5 | -   | 3.5 | -   | 4.0 | ns    |
| Clock High to Output High-Z                                       | t <sub>HZC</sub>  | -   | 5.0 | -   | 5.0 | -   | 5.0 | -   | 6.0 | ns    |
| Clock High Pulse Width  | t <sub>CH</sub>   | 2.8 | -   | 3.0 | -   | 3.0 | -   | 3.0 | -   | ns    |
| Clock Low Pulse Width   | t <sub>CL</sub>   | 2.8 | -   | 3.0 | -   | 3.0 | -   | 3.0 | -   | ns    |
| Address Setup to Clock High                                       | t <sub>AS</sub>   | 2.0 | -   | 2.0 | -   | 2.0 | -   | 2.0 | -   | ns    |
| CKE Setup to Clock High   | t <sub>CES</sub>  | 2.0 | -   | 2.0 | -   | 2.0 | -   | 2.0 | -   | ns    |
| Data Setup to Clock High  | t <sub>DS</sub>   | 2.0 | -   | 2.0 | -   | 2.0 | -   | 2.0 | -   | ns    |
| Write Setup to Clock High ( $\overline{WE}$ , $\overline{BWx}$ )  | t <sub>WS</sub>   | 2.0 | -   | 2.0 | -   | 2.0 | -   | 2.0 | -   | ns    |
| Address Advance Setup to Clock High                               | t <sub>ADVS</sub> | 2.0 | -   | 2.0 | -   | 2.0 | -   | 2.0 | -   | ns    |
| Chip Select Setup to Clock High                                   | t <sub>CSS</sub>  | 2.0 | -   | 2.0 | -   | 2.0 | -   | 2.0 | -   | ns    |
| Address Hold from Clock High                                      | t <sub>AH</sub>   | 0.5 | -   | 0.5 | -   | 0.5 | -   | 0.5 | -   | ns    |
| CKE Hold from Clock High  | t <sub>CEH</sub>  | 0.5 | -   | 0.5 | -   | 0.5 | -   | 0.5 | -   | ns    |
| Data Hold from Clock High   | t <sub>DH</sub>   | 0.5 | -   | 0.5 | -   | 0.5 | -   | 0.5 | -   | ns    |
| Write Hold from Clock High ( $\overline{WE}$ , $\overline{BWx}$ ) | t <sub>WH</sub>   | 0.5 | -   | 0.5 | -   | 0.5 | -   | 0.5 | -   | ns    |
| Address Advance Hold from Clock High                              | t <sub>ADVH</sub> | 0.5 | -   | 0.5 | -   | 0.5 | -   | 0.5 | -   | ns    |
| Chip Select Hold from Clock High                                  | t <sub>CSH</sub>  | 0.5 | -   | 0.5 | -   | 0.5 | -   | 0.5 | -   | ns    |
| ZZ High to Power Down   | t <sub>PD</sub>   | 2   | -   | 2   | -   | 2   | -   | 2   | -   | cycle |
| ZZ Low to Power Up  | t <sub>PUS</sub>  | 2   | -   | 2   | -   | 2   | -   | 2   | -   | cycle |

**Notes :** 1. All address inputs must meet the specified setup and hold times for all rising clock(CLK) edges when ADV is sampled low and  $\overline{CS}$  is sampled low. All other synchronous inputs must meet the specified setup and hold times whenever this device is chip selected.  
 2. Chip selects must be valid at each rising edge of CLK(when ADV is Low) to remain enabled.  
 3. A write cycle is defined by  $\overline{WE}$  low having been registered into the device at ADV Low, A Read cycle is defined by  $\overline{WE}$  High with ADV Low, Both cases must meet setup and hold times.  
 4. To avoid bus contention, At a given voltage and temperature t<sub>LZC</sub> is more than t<sub>HZC</sub>.  
 The soecs as shown do not imply bus contention because t<sub>LZC</sub> is a Min. parameter that is worst case at totally different test conditions (0°C,3.465V) than t<sub>HZC</sub>, which is a Max. parameter(worst case at 70°C,3.135V)  
 It is not possible for two SRAMs on the same board to be at such different voltage and temperatue.

**SLEEP MODE**

SLEEP MODE is a low current, power-down mode in which the device is deselected and current is reduced to  $I_{SB2}$ . The duration of SLEEP MODE is dictated by the length of time the ZZ is in a High state.

After entering SLEEP MODE, all inputs except ZZ become disabled and all outputs go to High-Z

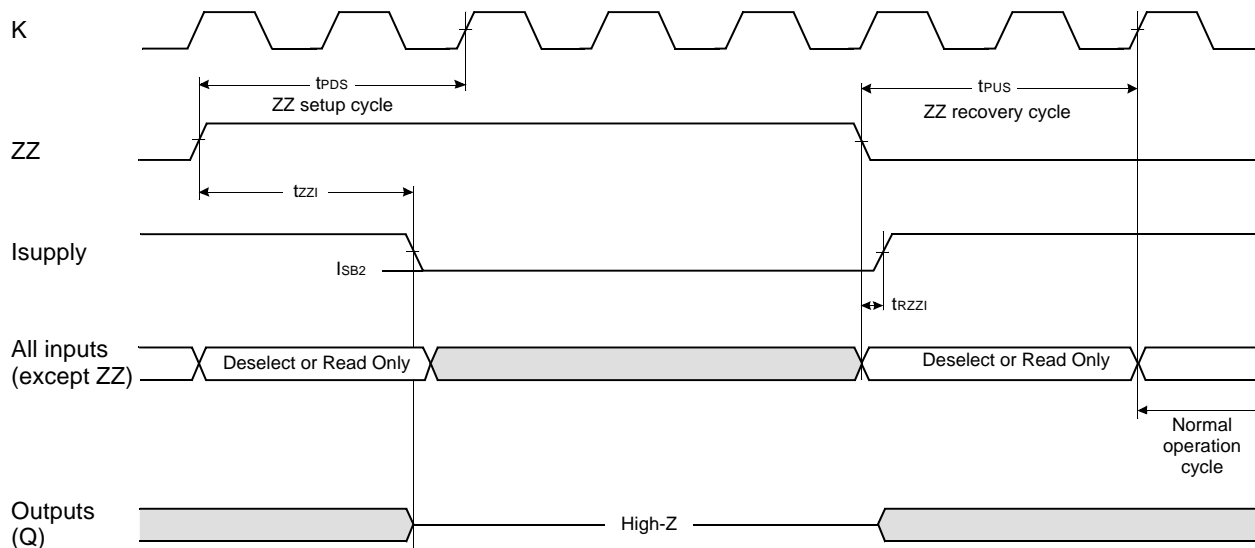
The ZZ pin is an asynchronous, active high input that causes the device to enter SLEEP MODE.

When the ZZ pin becomes a logic High,  $I_{SB2}$  is guaranteed after the time  $t_{ZZI}$  is met. Any operation pending when entering SLEEP MODE is not guaranteed to successful complete. Therefore, SLEEP MODE (READ or WRITE) must not be initiated until valid pending operations are completed. Similarly, when exiting SLEEP MODE during  $t_{PUS}$ , only a DESELECT or READ cycle should be given while the SRAM is transitioning out of SLEEP MODE.

**SLEEP MODE ELECTRICAL CHARACTERISTICS**

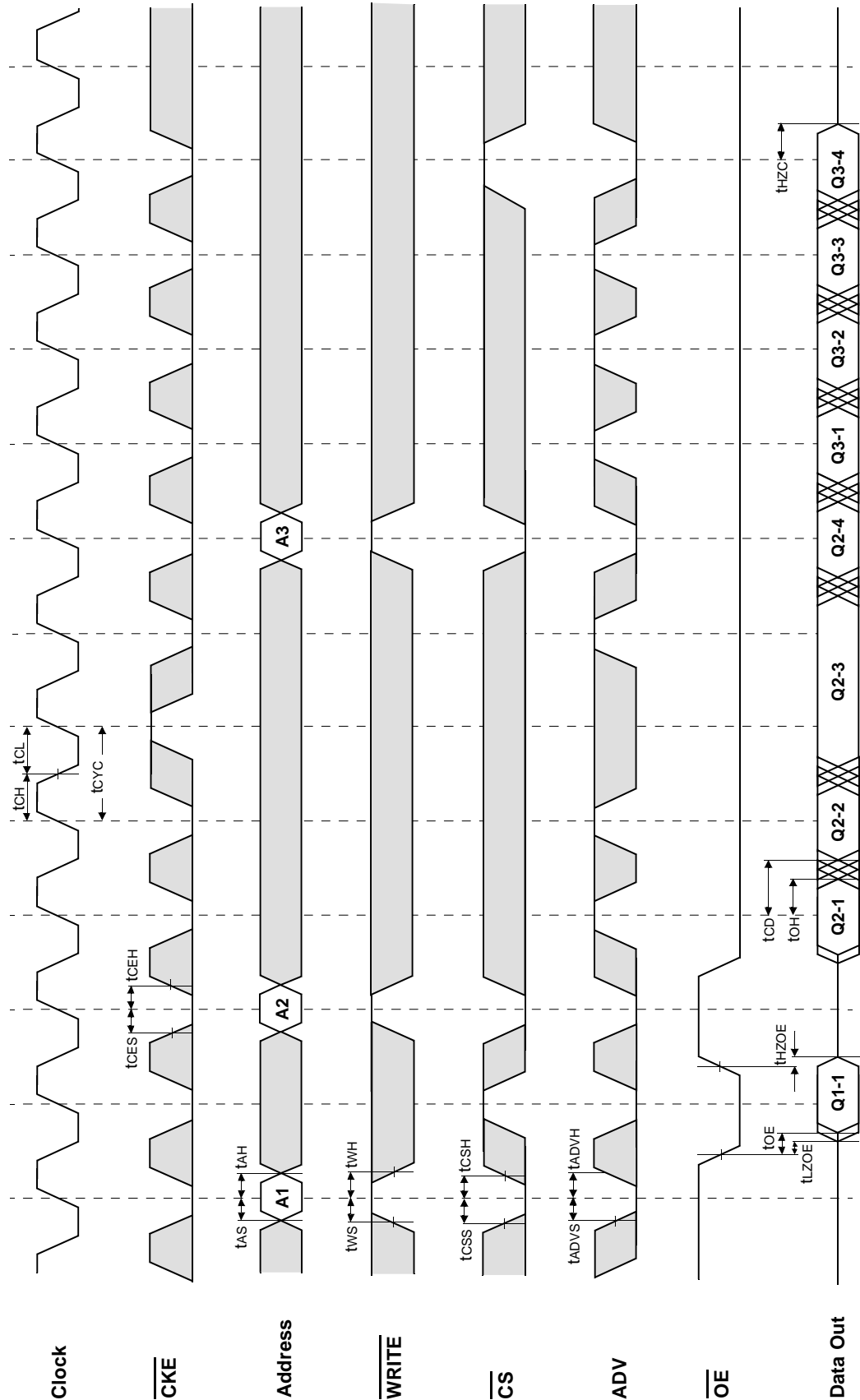
| DESCRIPTION                       | CONDITIONS       | SYMBOL     | MIN | MAX | UNITS |
|-----------------------------------|------------------|------------|-----|-----|-------|
| Current during SLEEP MODE         | $ZZ \geq V_{IH}$ | $I_{SB2}$  |     | 10  | mA    |
| ZZ active to input ignored        |                  | $t_{PDS}$  | 2   |     | cycle |
| ZZ inactive to input sampled      |                  | $t_{PUS}$  | 2   |     | cycle |
| ZZ active to SLEEP current        |                  | $t_{ZZI}$  |     | 2   | cycle |
| ZZ inactive to exit SLEEP current |                  | $t_{RZZI}$ | 0   |     |       |

**SLEEP MODE WAVEFORM**



□ DON'T CARE

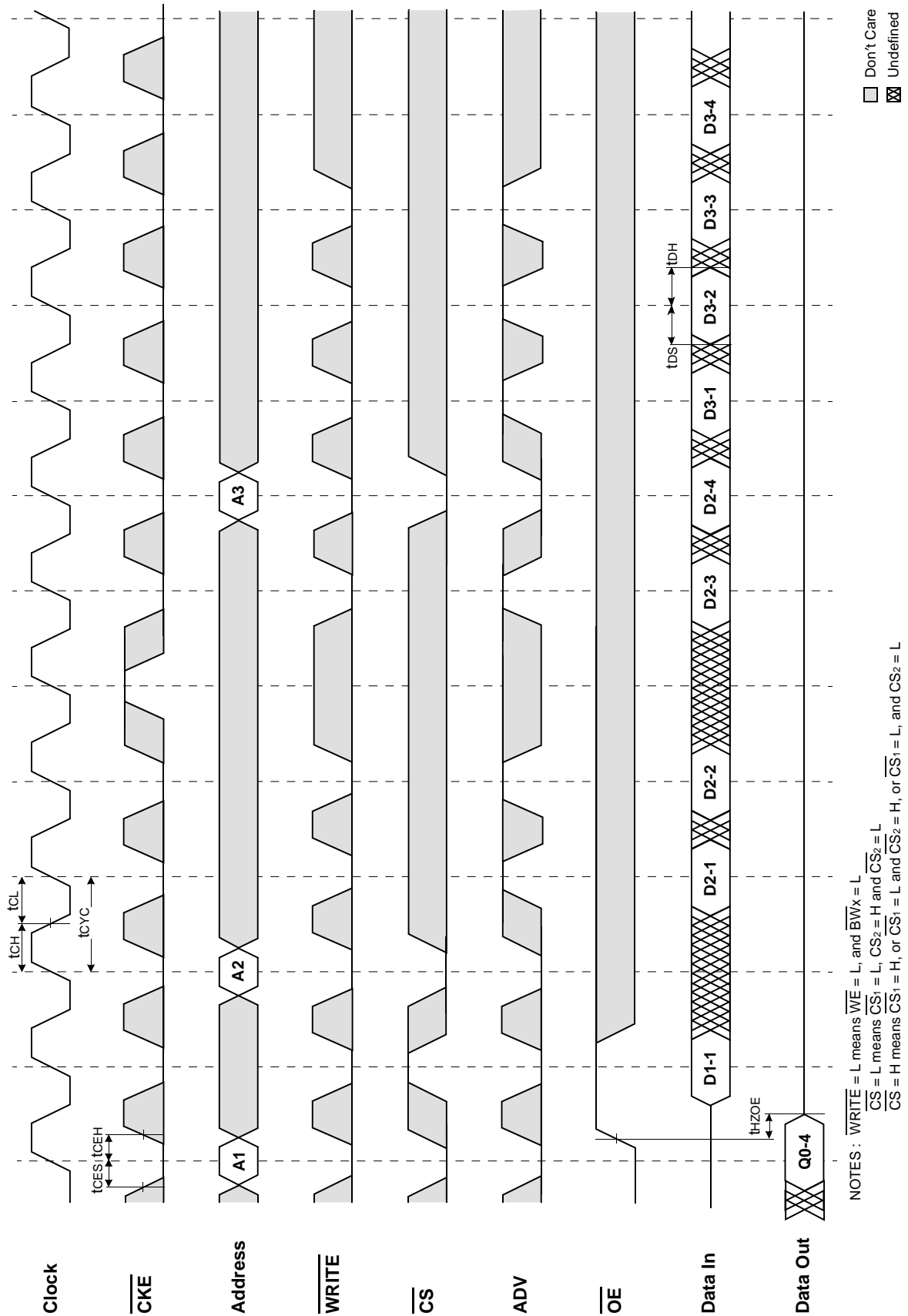
TIMING WAVEFORM OF READ CYCLE



□ Don't Care  
▣ Undefined

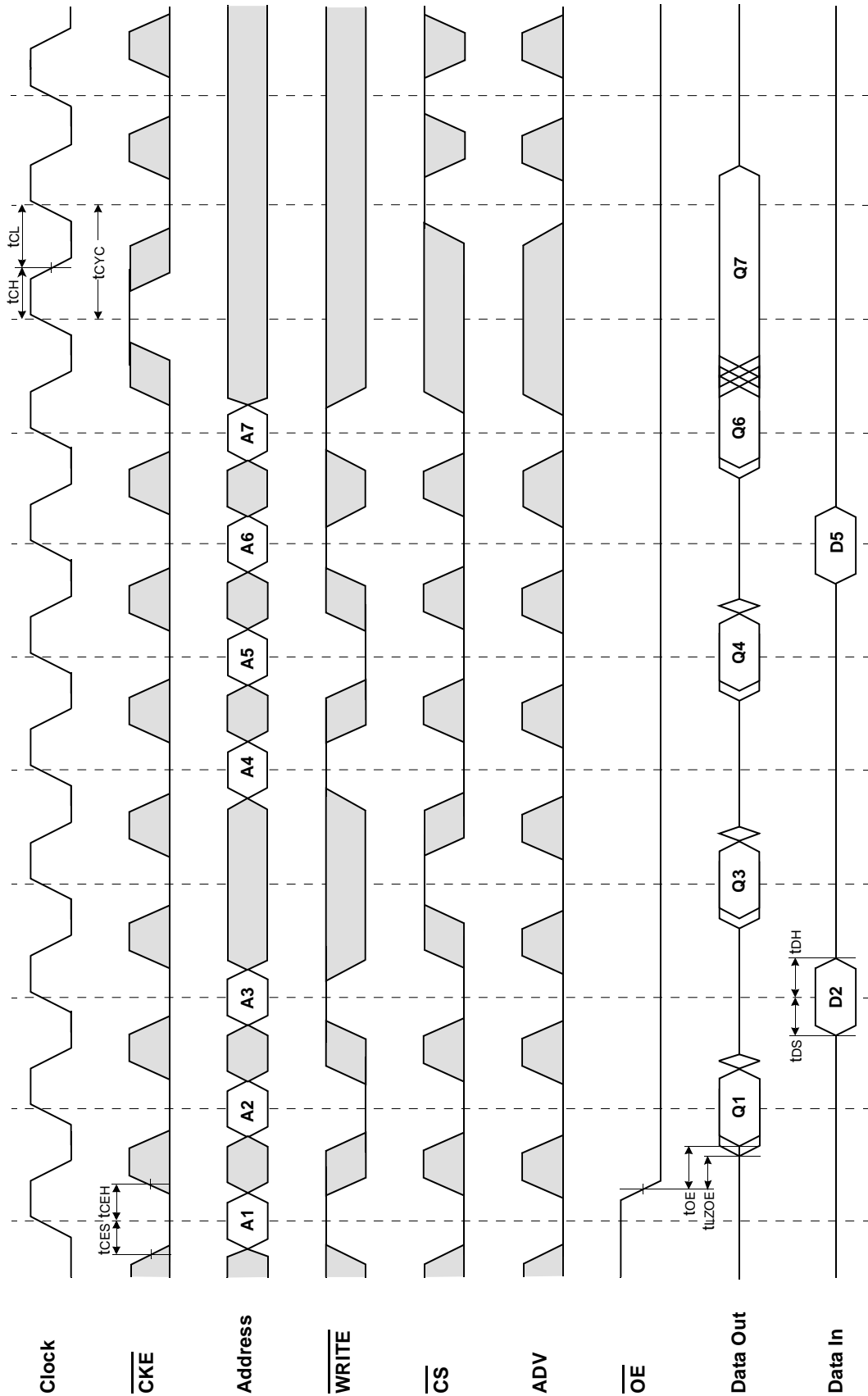
NOTES :  $\overline{WRITE} = L$  means  $\overline{WE} = L$ , and  $\overline{BWx} = L$   
 $\overline{CS} = L$  means  $\overline{CS1} = L$ ,  $\overline{CS2} = H$  and  $\overline{CS2} = L$   
 $\overline{CS} = H$  means  $\overline{CS1} = H$ , or  $\overline{CS1} = L$  and  $\overline{CS2} = H$ , or  $\overline{CS1} = L$ , and  $\overline{CS2} = L$

TIMING WAVEFORM OF WRTE CYCLE



NOTES:  $\overline{WRITE} = L$  means  $\overline{WE} = L$ , and  $\overline{BWx} = L$   
 $\overline{CS} = L$  means  $\overline{CS1} = L$ ,  $\overline{CS2} = H$  and  $\overline{CS2} = L$   
 $\overline{CS} = H$  means  $\overline{CS1} = H$ , or  $\overline{CS1} = L$  and  $\overline{CS2} = H$ , or  $\overline{CS1} = L$ , and  $\overline{CS2} = L$

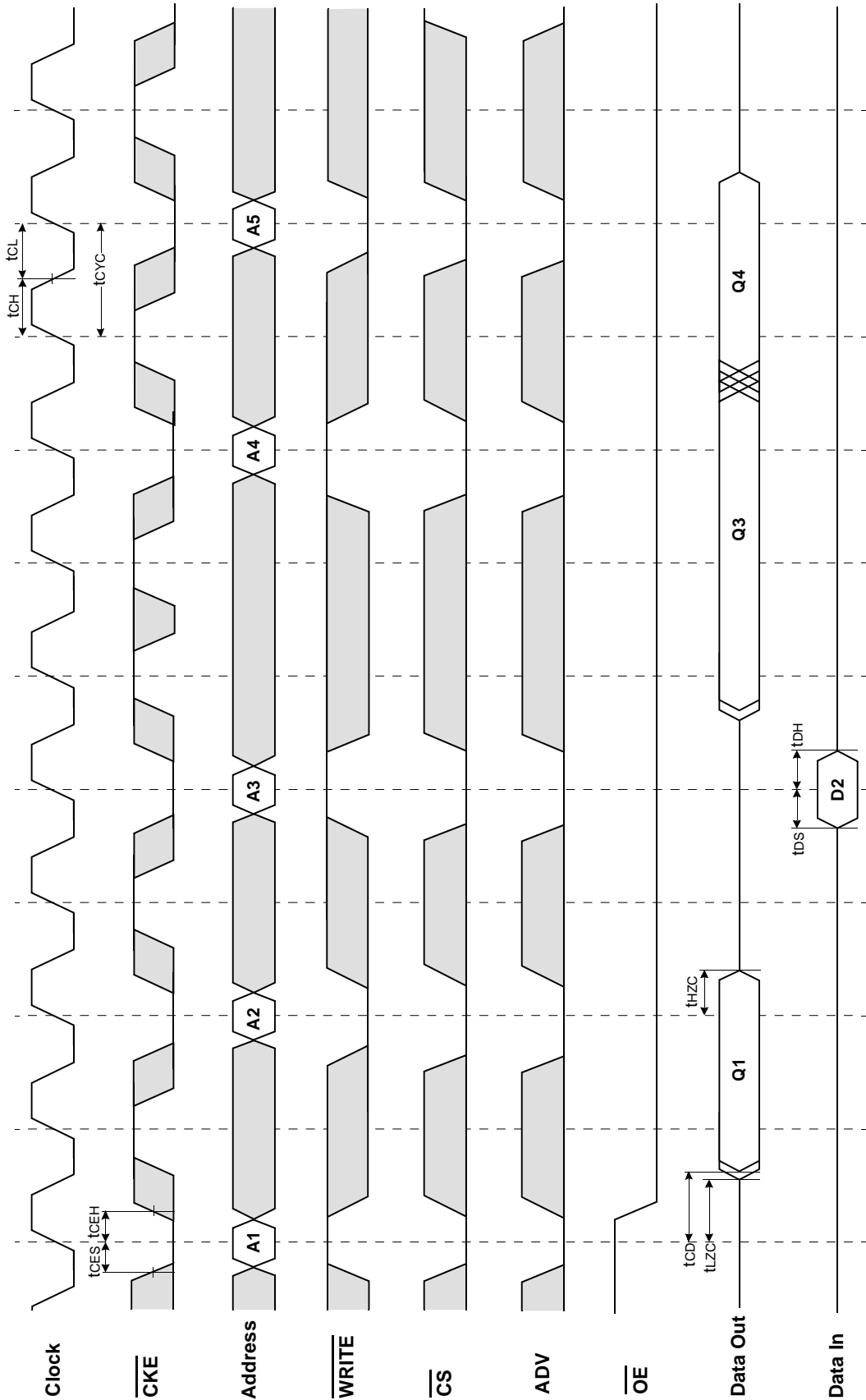
TIMING WAVEFORM OF SINGLE READWRITE



□ Don't Care  
⊗ Undefined

NOTES:  $\overline{WRITE} = L$  means  $\overline{WE} = L$ , and  $\overline{BWx} = L$   
 $\overline{CS} = L$  means  $\overline{CS1} = L$ ,  $\overline{CS2} = H$  and  $\overline{CS2} = L$   
 $\overline{CS} = H$  means  $\overline{CS1} = H$ , or  $\overline{CS1} = L$  and  $\overline{CS2} = H$ , or  $\overline{CS1} = L$ , and  $\overline{CS2} = L$

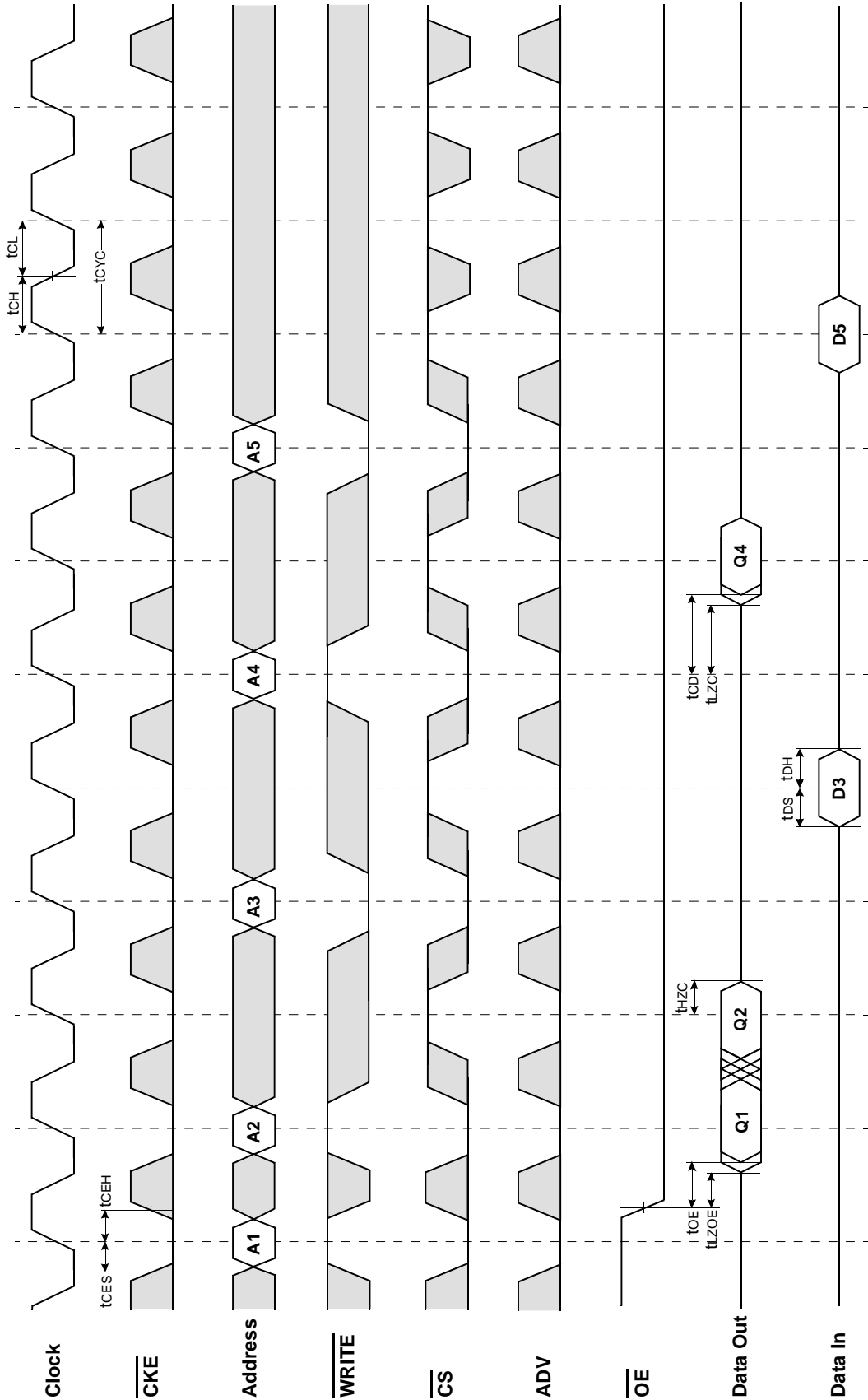
TIMING WAVEFORM OF CKE OPERATION



Don't Care  
 Undefined

NOTES : WRITE = L means WE = L, and BWx = L  
CS = L means CS<sub>1</sub> = L, CS<sub>2</sub> = H and CS<sub>2</sub> = L  
CS = H means CS<sub>1</sub> = H, or CS<sub>1</sub> = L and CS<sub>2</sub> = H, or CS<sub>1</sub> = L, and CS<sub>2</sub> = L

TIMING WAVEFORM OF CS OPERATION



Don't Care  
 Undefined

NOTES: WRITE = L means WE = L, and BWx = L  
CS = L means CS<sub>1</sub> = L, CS<sub>2</sub> = H and CS<sub>2</sub> = L  
CS = H means CS<sub>1</sub> = H, or CS<sub>1</sub> = L and CS<sub>2</sub> = H, or CS<sub>1</sub> = L, and CS<sub>2</sub> = L



