

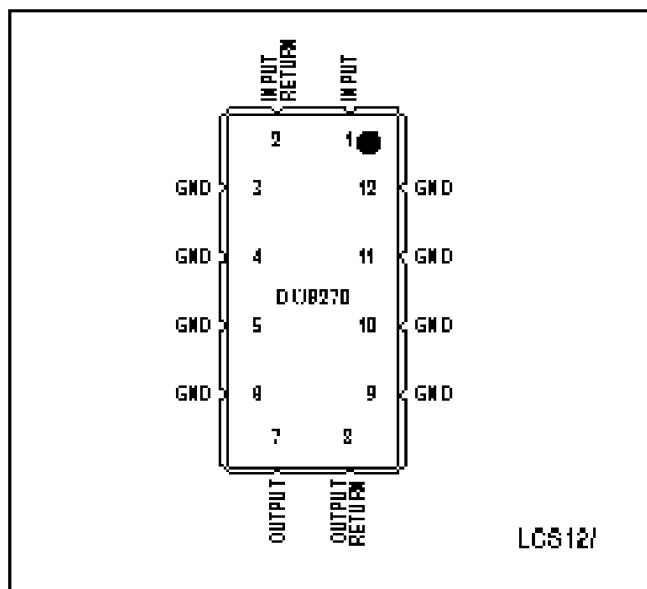
The DW9270 has been designed specifically for the Digital Wireless Communications market, as an IF filter with a centre frequency of 240MHz. The filter utilises Mitel Semiconductor's low loss (8.5dB typical), Transversal filter technology based on a Quartz substrate for excellent temperature stability.

With a typical 3dB passband of 1MHz, and an adjacent channel rejection of 12dB (min.) the device exhibits excellent close-in and ultimate rejection, which combined with a Group Delay Ripple of 200ns (max.) makes the DW9270 an ideal IF filter for Digital Wireless Communications systems.

The device is available in a surface mount ceramic chip carrier suited to high volume automated assembly systems.

FEATURES

- 240MHz Centre Frequency (f_0)
- Low Insertion Loss (10dB max.)
- 3dB Passband 1.05MHz (typ.)
- Quartz Temperature Stability
- Low Profile Ceramic LCC Package



ABSOLUTE MAXIMUM RATINGS

DC Voltage	VDC	0V
Input Power Max.	PIN	10dBm

NOMINAL IMPEDANCE

Input:	255Ω // 14pF
Output:	400Ω // 11.5pF

50Ω TEST BOARD COMPONENTS

Input:	Shunt Cap. 27pF, Series Ind. 47nH, Shunt Cap. 1.5pF
Output:	Shunt Cap. 1.5pF, Series Ind. 47nH, Shunt Cap. 30pF

Components: Coilcraft 1008CS Inductors : Murata 0805 Capacitors

PACKAGE

13.5mm x 6.5mm : 12 Lead SMD

OPERATION

Balanced or Unbalanced configuration available.

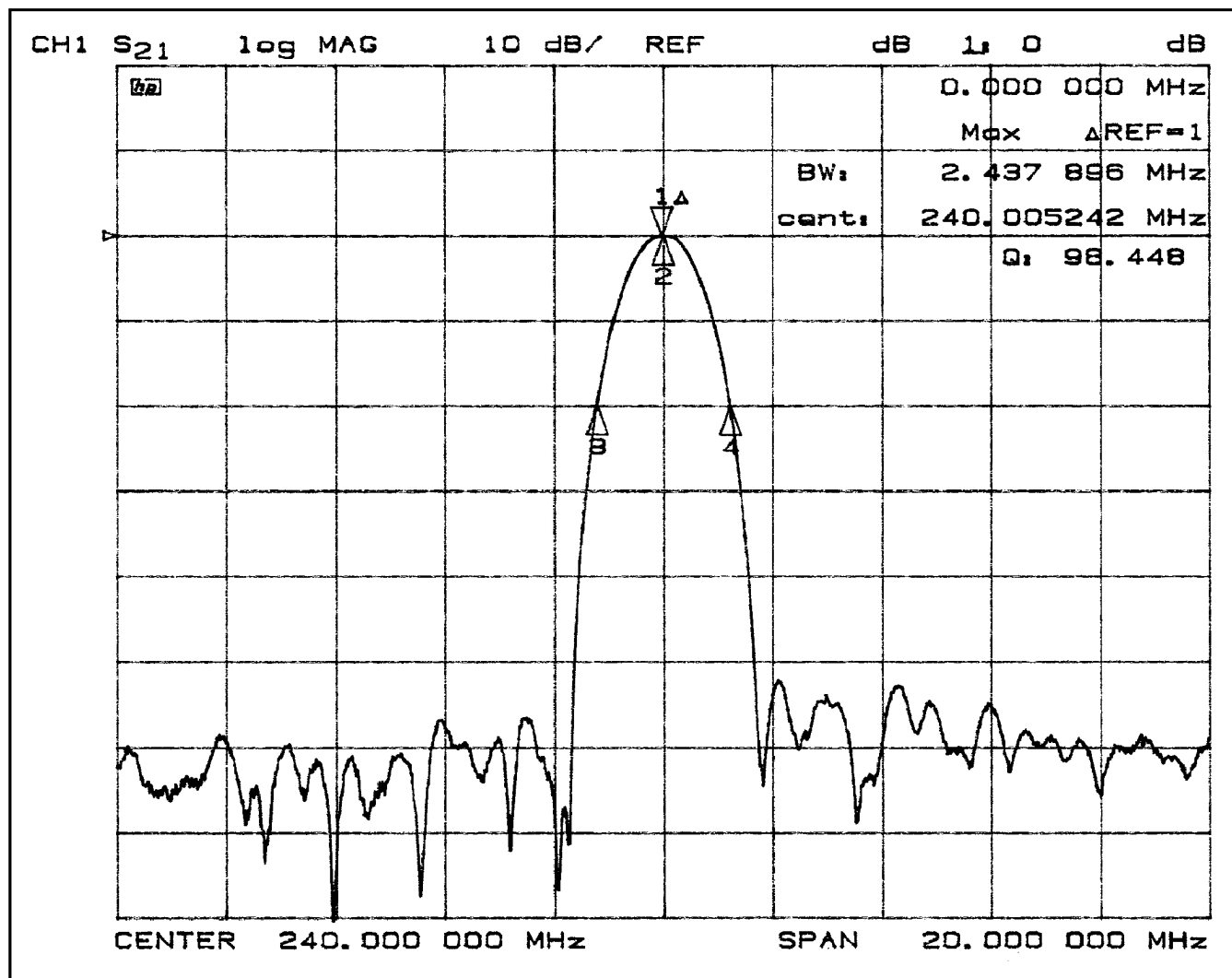
ORDER INFORMATION

DW9270

DW9270

ELECTRICAL CHARACTERISTICS @ 25 °C

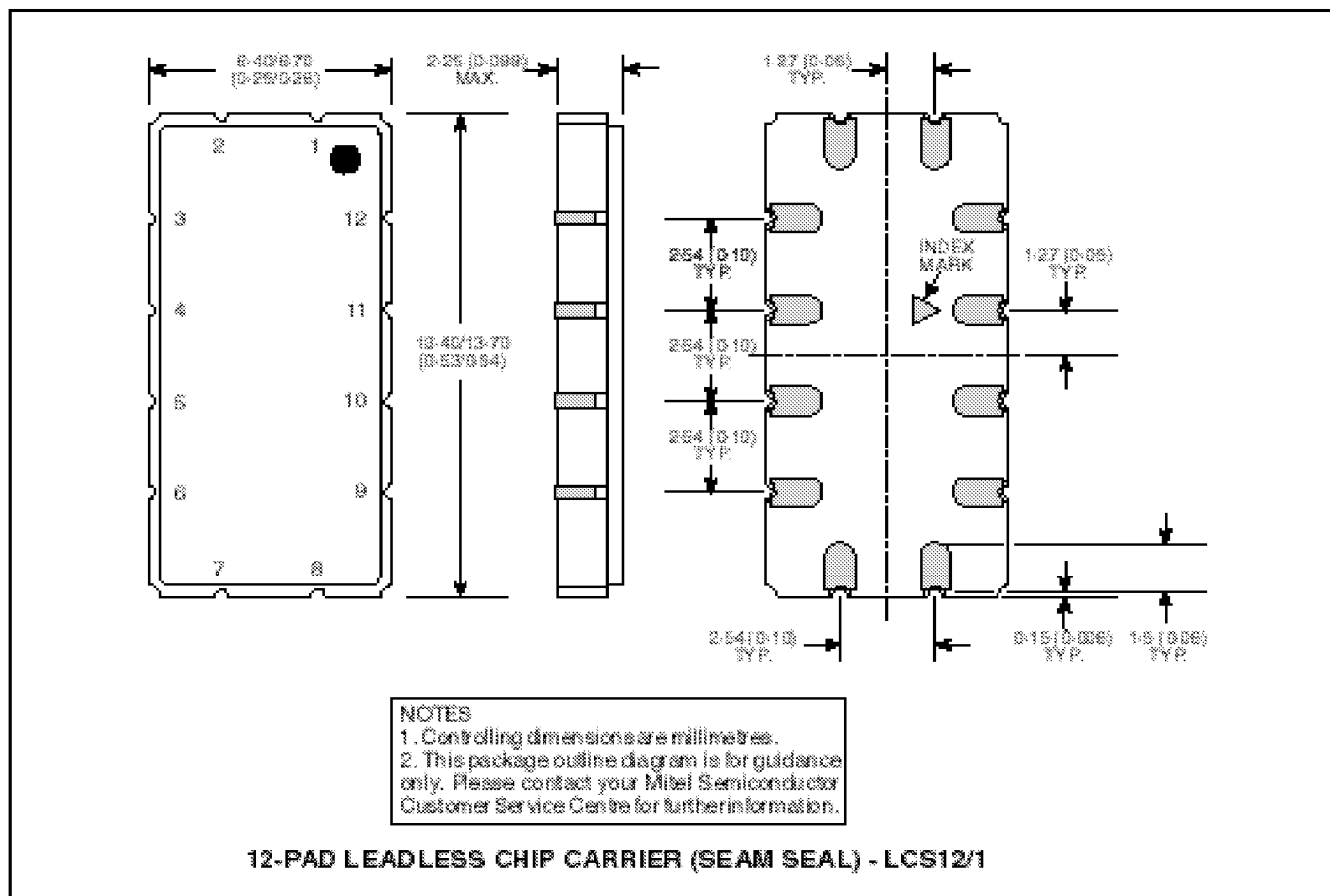
Parameter	Min	Typ	Max	Units
Centre Frequency	239.96	240	240.40	MHz
3dB Bandwidth	1000	1050		kHz
Insertion Loss	-	8.5	10	dB
Amplitude Ripple	-	0.2	1	dB
Group Delay Ripple	-	50	200	ns
Stopband Rejection				
fc ± 1.0 MHz	11.0	13	-	dB
fc ± 1.75 - 2.5 MHz	44	55	-	dB
fc ± 2.50 - 3.50 MHz	48	55	-	dB
fc ± 3.50 - 50.0 MHz	50	60	-	dB
Operating Temperature Range	-20	-	+60	°C



DW9270

PACKAGE DETAILS

Dimensions are shown thus: mm (in). For further package information, please contact your local Customer Service Centre.



HEADQUARTERS OPERATIONS

MITEL SEMICONDUCTOR

Cheney Manor, Swindon,
Wiltshire SN2 2QW, United Kingdom.
Tel: (01793) 518000
Fax: (01793) 518411

MITEL SEMICONDUCTOR

1500 Green Hills Road,
Scotts Valley, California 95066-4922
United States of America.
Tel (408) 438 2900
Fax: (408) 438 5576/6231

Internet: <http://www.gpsemi.com>

CUSTOMER SERVICE CENTRES

- **FRANCE & BENELUX** Les Ulis Cedex Tel: (1) 69 18 90 00 Fax : (1) 64 46 06 07
- **GERMANY** Munich Tel: (089) 419508-20 Fax : (089) 419508-55
- **ITALY** Milan Tel: (02) 6607151 Fax: (02) 66040993
- **JAPAN** Tokyo Tel: (03) 5276-5501 Fax: (03) 5276-5510
- **KOREA** Seoul Tel: (2) 5668141 Fax: (2) 5697933
- **NORTH AMERICA** Scotts Valley, USA Tel: (408) 438 2900 Fax: (408) 438 5576/6231
- **SOUTH EAST ASIA** Singapore Tel: (65) 3827708 Fax: (65) 3828872
- **SWEDEN** Stockholm Tel: 46 8 702 97 70 Fax: 46 8 640 47 36
- **TAIWAN, ROC** Taipei Tel: 886 2 25461260 Fax: 886 2 27190260
- **UK, EIRE, DENMARK, FINLAND & NORWAY**
Swindon Tel: (01793) 726666 Fax : (01793) 518582

These are supported by Agents and Distributors in major countries world-wide.

© Mitel Corporation 1998 Publication No. DS4024 Issue No. 1.6 November 1995

TECHNICAL DOCUMENTATION – NOT FOR RESALE. PRINTED IN UNITED KINGDOM

This publication is issued to provide information only which (unless agreed by the Company in writing) may not be used, applied or reproduced for any purpose nor form part of any order or contract nor to be regarded as a representation relating to the products or services concerned. No warranty or guarantee express or implied is made regarding the capability, performance or suitability of any product or service. The Company reserves the right to alter without prior notice the specification, design or price of any product or service. Information concerning possible methods of use is provided as a guide only and does not constitute any guarantee that such methods of use will be satisfactory in a specific piece of equipment. It is the user's responsibility to fully determine the performance and suitability of any equipment using such information and to ensure that any publication or data used is up to date and has not been superseded. These products are not suitable for use in any medical products whose failure to perform may result in significant injury or death to the user. All products and materials are sold and services provided subject to the Company's conditions of sale, which are available on request.

All brand names and product names used in this publication are trademarks, registered trademarks or trade names of their respective owners.