

PLEASE CHECK WWW.MOLEX.COM FOR LATEST PART INFORMATION

Part Number: [0700211021](#)
Status: **Active**
Overview: [cgrid_sl_products](#)
Description: SL™ Crimp Terminal, Series 70021, Male, Nickel over Tin, 22-24 AWG, Reel

Documents:

[Drawing \(PDF\)](#) [RoHS Certificate of Compliance \(PDF\)](#)

General

| | |
|-------------------------|-----------------------------------|
| Product Family | Crimp Terminals |
| Series | 70021 |
| Crimp Quality Equipment | Yes |
| Overview | cgrid_sl_products |
| Product Name | SL™ |

Physical

| | |
|--------------------------------|----------------------|
| Gender | Male |
| Material - Metal | Phosphor Bronze |
| Material - Plating Mating | Tin |
| Material - Plating Termination | Tin |
| Packaging Type | Reel |
| Plating min: Mating (µin) | 150 |
| Plating min: Mating (µm) | 3.75 |
| Plating min: Termination (µin) | 75 |
| Plating min: Termination (µm) | 1.875 |
| Termination Interface: Style | Crimp or Compression |
| Wire Insulation Diameter | 1.63mm (.064") max. |
| Wire Size AWG | 22, 24 |
| Wire Size mm² | N/A |

Material Info

Reference - Drawing Numbers

Sales Drawing [SD-70021-1021](#)

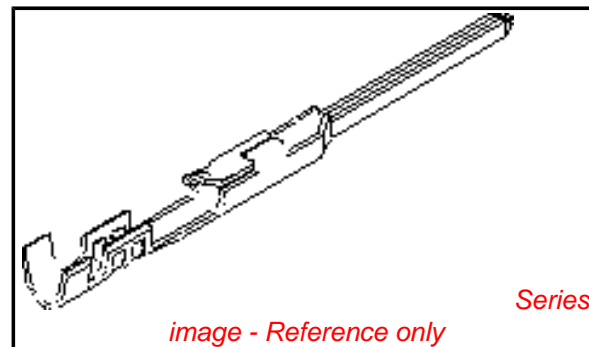


image - Reference only

EU RoHS

ELV and RoHS

Compliant

REACH SVHC

Contains SVHC: No

Halogen-Free

Status

Halogen-Free

Need more information on product environmental compliance?

Email productcompliance@molex.com
 For a multiple part number RoHS Certificate of Compliance, [click here](#)

Please visit the [Contact Us](#) section for any non-product compliance questions.

China RoHS



Search Parts in this Series

[70021Series](#)

Use With

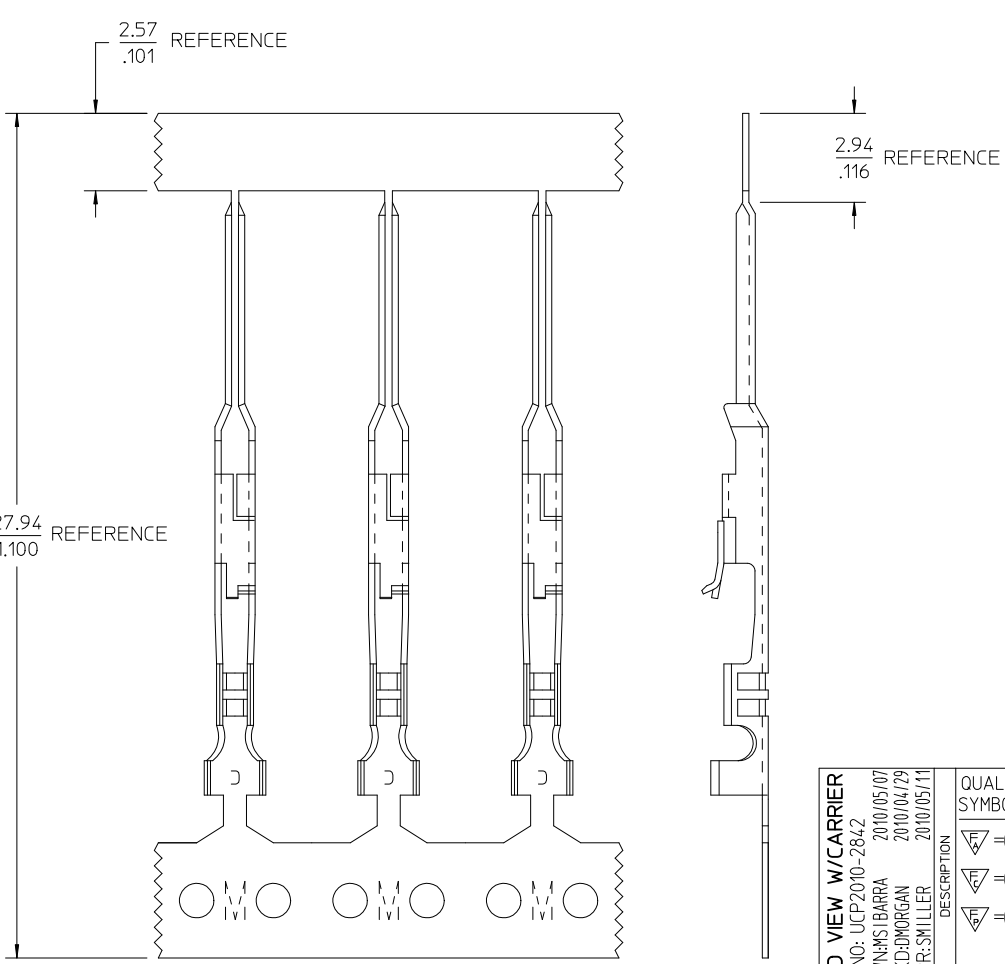
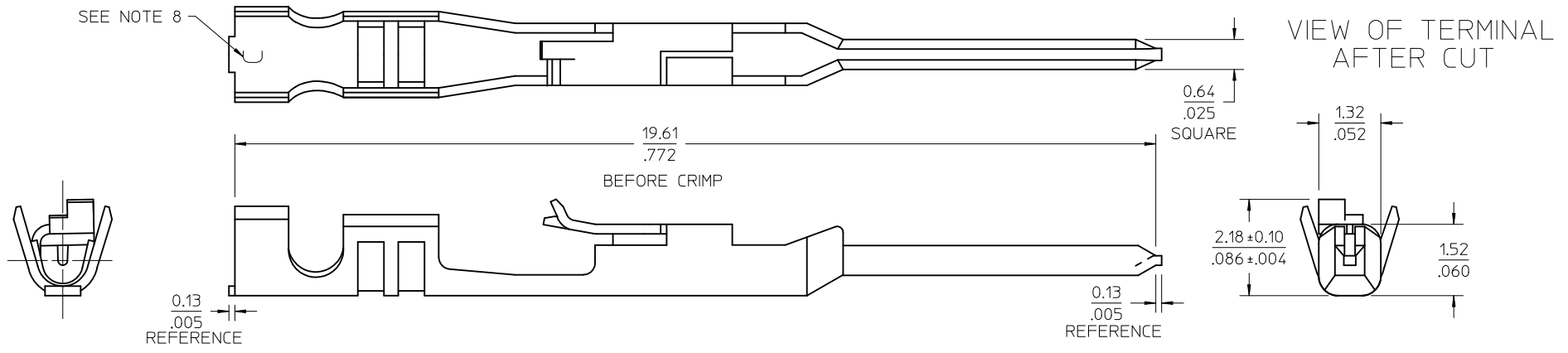
[70066 Housing](#), [70107 Housing](#)

Application Tooling | [FAQ](#)

Tooling specifications and manuals are found by selecting the products below. Crimp Height Specifications are then contained in the Application Tooling Specification document.

Global

| Description | Product # |
|---|----------------------------|
| Fine Adjust Applicator for SL™ Crimp Terminal | 0639020600 |



- NOTES:
1. MATERIAL: PHOSPHOR BRONZE, 0.20/0.008 THICK
 2. FINISH: 3.81 MICROMETERS/150 MICROINCHES TIN OVER NICKEL UNDERPLATE OVERALL
 3. PRODUCT SPECIFICATION: PS-70021
 4. PACKAGING: PARTS SUPPLIED IN REEL FORM
 5. TERMINAL FOR USE WITH: 70066-**** & 70107-**** HOUSINGS
 6. TERMINAL TO BE USED WITH: 22-24 AWG STRANDED WIRE WITH .064 DIAMETER MAXIMUM INSULATION
 7. REFER TO MOLEX OPERATIONAL AND SERVICE MANUAL FOR DETAILS
 8. CRIMP SIZE INDICATOR: C=22-24 AWG

| | | | | | | | | | |
|--|-----------------------------------|--|--|-----------------------------------|--|--------------------------------------|--------------|---|--|
| ADD VIEW W/CARRIER EC NO: UCP2010-2842 DRW:MSI.BARRA 2010/05/07 CHKD:DMORGAN 2010/04/29 APPR:SMILLER 2010/05/11 | QUALITY SYMBOLS | GENERAL TOLERANCES (UNLESS SPECIFIED) | | DIMENSION STYLE | | SCALE | DESIGN UNITS | THIRD ANGLE PROJECTION | |
| | | | | MM/IN | | 15:1 | INCH | | |
| | | | | DRAWN BY DATE | | TITLE | | | |
| | | | | MSI.BARRA 2010/04/29 | | TERMINAL, MALE CRIMP | | | |
| REV B | DESCRIPTION ADD VIEW W/CARRIER | 4 PLACES ± --- ± --- | | CHECKED BY DATE | | MOLEX INCORPORATED | | SHEET NO. 1 OF 1 | |
| | | 3 PLACES ± --- ± .010 | | DMORGAN 2010/04/29 | | | | | |
| | | 2 PLACES ± 0.25 ± .015 | | APPROVED BY DATE | | DOCUMENT NO. SD-70021-1021 | | THIS DRAWING CONTAINS INFORMATION THAT IS PROPRIETARY TO MOLEX INCORPORATED AND SHOULD NOT BE USED WITHOUT WRITTEN PERMISSION | |
| | | 1 PLACE ± 0.35 ± --- | | SMILLER 2010/05/11 | | | | | |
| | | ANGULAR ±1/2° | | MATERIAL NO. 70021-1021 | | | | | |
| | | DRAFT WHERE APPLICABLE MUST REMAIN WITHIN DIMENSIONS | | SIZE C | | | | | |

SCALE 8:1