

**PLEASE CHECK WWW.MOLEX.COM FOR LATEST PART INFORMATION**

**Part Number:** [0473220002](#)  
**Status:** **Active**  
**Description:** 1.00mm (.039") Pitch ExpressCard\* Header, Bottom Mount, Push-Push Type, Lead Free

**Documents:**

[3D Model](#) [Product Specification PS-47277-001 \(PDF\)](#)  
[Drawing \(PDF\)](#) [RoHS Certificate of Compliance \(PDF\)](#)

**General**

Product Family	Memory Card Sockets
Series	<a href="#">47322</a>
Button Type	Push-Push
Component Type	Header/Socket (Host)
Product Name	ExpressCard*
Type	N/A

**Physical**

Card Detection Switch	N/A
Circuits (Loaded)	26
Durability (mating cycles max)	10,000
Ejector Button Side	No Ejector Button Present
Entry Angle	Vertical (Top Entry)
Keying to Mating Part	Yes
Material - Metal	Phosphor Bronze
Material - Plating Mating	Gold
Material - Plating Termination	Tin
PCB Locator	Yes
PCB Mounting Side	Reverse
PCB Retention	Yes
Packaging Type	Embossed Tape on Reel
Pitch - Mating Interface (in)	0.039 In
Pitch - Mating Interface (mm)	1.00 mm
Plating min: Mating (µin)	15
Plating min: Mating (µm)	0.375
Plating min: Termination (µin)	60
Plating min: Termination (µm)	1.5
Ports	1
Temperature Range - Operating	-40°C to +85°C
Termination Interface: Style	Surface Mount

**Electrical**

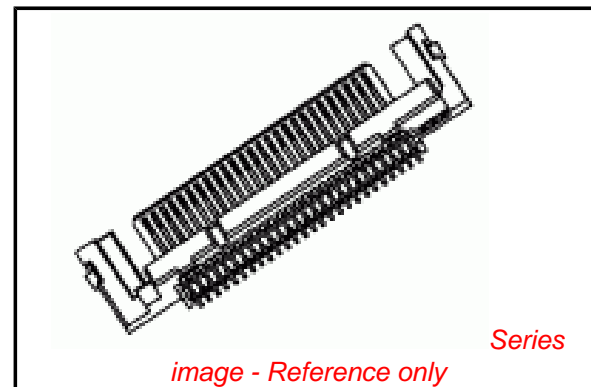
Current - Maximum per Contact	0.75A
Shielded	No
Voltage - Maximum	3.3V DC

**Material Info**

**Reference - Drawing Numbers**

Packaging Specification	PK-47322-002
Product Specification	PS-47277-001
Sales Drawing	SD-47322-001

\* ExpressCard is trademark, or registered trademark of PCMCIA



**EU RoHS**

**ELV and RoHS  
Compliant**  
**REACH SVHC**  
 Not Reviewed  
**Halogen-Free  
Status**

**China RoHS**



**Need more information on product  
environmental compliance?**

Email [productcompliance@molex.com](mailto:productcompliance@molex.com)  
 For a multiple part number RoHS Certificate of Compliance, [click here](#)

Please visit the [Contact Us](#) section for any non-product compliance questions.

**Search Parts in this Series**

[47322Series](#)

**Mates With**

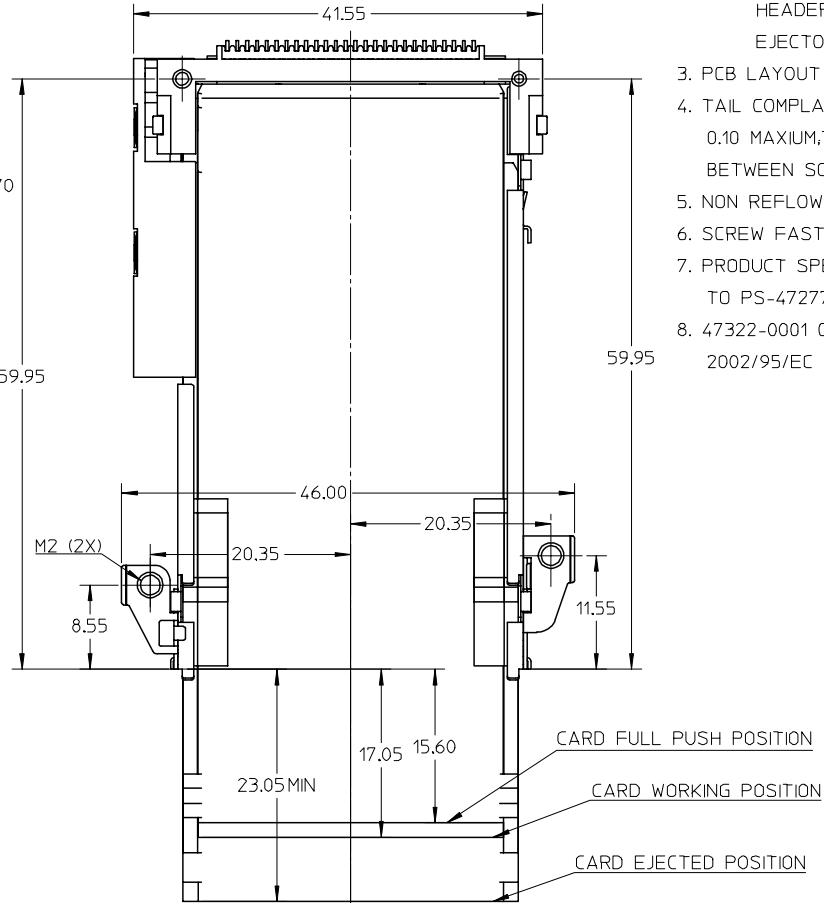
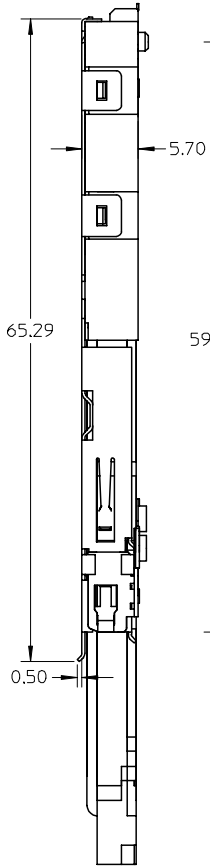
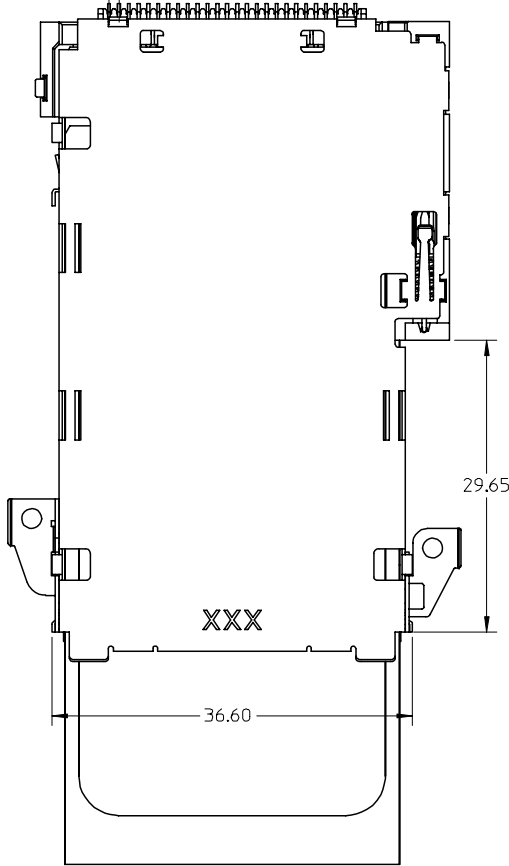
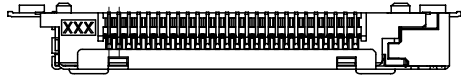
ExpressCard\* Module

**Use With**

[473220003](#)

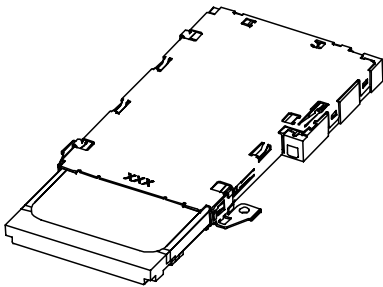
**PLEASE CHECK [WWW.MOLEX.COM](http://WWW.MOLEX.COM) FOR LATEST PART INFORMATION**

10 9 8 7 6 5 4 3 2 1



NOTES:

1. CONNECTOR DESIGN BASED ON EXPRESSCARD STANDARD;
2. COMPONENTS:  
 HEADER: SHEET 2  
 EJECTOR: SHEET 3
3. PCB LAYOUT PLEASE REFER TO SHEET 4,
4. TAIL COMPLANARITY OF HEADER TO BE 0.10 MAXIMUM, TRUE POSITION IS 0.15 MAXIMUM BETWEEN SOLDER TAILS;
5. NON REFLOW PROCESS FOR EJECTOR.
6. SCREW FASTENING TORQUE: 1.0 KGF-CM,
7. PRODUCT SPECIFICATION PLEASE REFER TO PS-47277-001.
8. 47322-0001 COMPLIANT TO RoHS DIRECTIVE 2002/95/EC AND ELV DIRECTIVE 2000/53/EC.



EC NO: SH2007-0352	2006/11/17
DRWN: OCHEN	2006/11/22
CHKD: HARVEY	2006/11/22
APPR: JNCHEN	2006/11/28
REV	DESCRIPTION
A1	

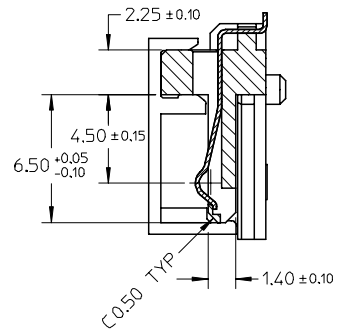
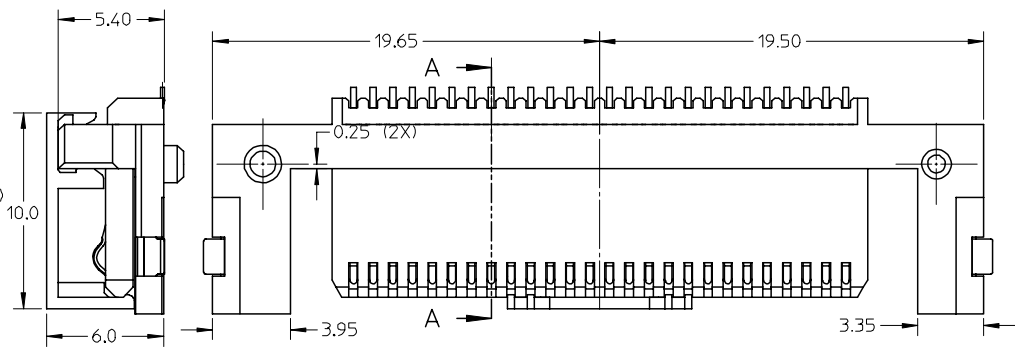
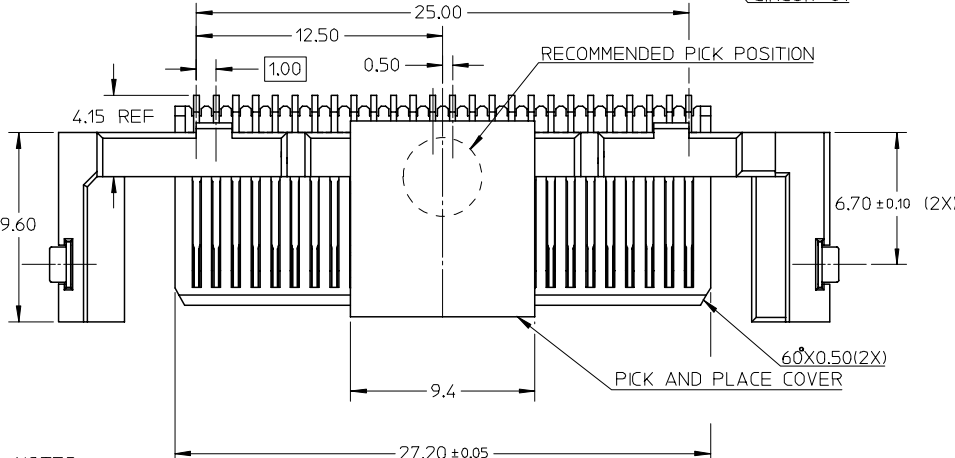
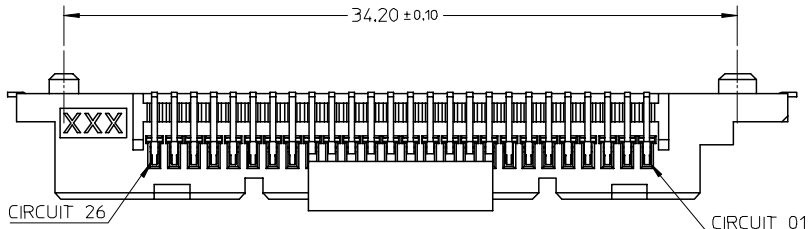
QUALITY SYMBOLS	$\nabla = 0$
	$\nabla C = 0$

GENERAL TOLERANCES (UNLESS SPECIFIED)	DIMENSION STYLE MM ONLY	
	mm	INCH
4 PLACES	$\pm 0.15$	$\pm 0.006$
3 PLACES	$\pm 0.20$	$\pm 0.008$
2 PLACES	$\pm 0.25$	$\pm 0.010$
1 PLACE	$\pm 0.30$	$\pm 0.012$
ANGULAR $\pm 3^\circ$		
DRAFT WHERE APPLICABLE MUST REMAIN WITHIN DIMENSIONS		

DRAWN BY	DATE
R. BIAN	2005/05/20
CHECKED BY	DATE
HARVEY	2006/04/18
APPROVED BY	DATE
JENNY	2006/04/18
MATERIAL NO.	
47322-0001	

SCALE	DESIGN UNITS	THIRD ANGLE PROJECTION	
NTS	METRIC		
EXPRESSCARD 34MM BOTTOM MOUNT PUSH-PUSH TYPE			
molex		MOLEX INCORPORATED	
DOCUMENT NO.		SHEET NO.	
SD-47322-001		1 OF 4	
THIS DRAWING CONTAINS INFORMATION THAT IS PROPRIETARY TO MOLEX INCORPORATED AND SHOULD NOT BE USED WITHOUT WRITTEN PERMISSION			

9 8 7 6 5 4 3 2 1



- NOTES:
- CONNECTOR DESIGN BASED ON EXPRESSCARD STANDARD;
  - MATERIAL:
    - HOUSING: LIQUID CRYSTAL POLYMER,
    - TERMINAL: PHOSPHOR BRONZE,
    - FITTING-NAIL: PHOSPHOR BRONZE,
    - PICK AND PLACE COVER: NYLON 46,
  - FINISH:
    - TERMINAL:
      - UNDERPLATING: Ni OVERALL,
      - SELECTIVE GOLD ON CONTACT AREA,
      - THICKNESS: 15 MICROINCH MINIMUM,
      - SELECTIVE PURE TIN ON SOLDER TAIL AREA,
      - THICKNESS: 40-100 MICROINCH,
  - COPLANARITY AT SOLDER TAIL TO BE 0.10 MAXIMUM;
  - APPLICABLE CARD SLOT PLEASE REFER TO SHEET 3
  - PRODUCT SPECIFICATION PLEASE REFER TO PS-47277-001
  - 47322-0002 COMPLIANT TO RoHS DIRECTIVE 2002/95/EC AND ELV DIRECTIVE 2000/53/EC.

EC NO: SH2007-0352 DRWN: OCHEN 2006/11/17 CHKD: HARVEY 2006/11/22 APPR: JNCHEN 2006/11/28	QUALITY SYMBOLS $\nabla = 0$ $\triangle = 0$	GENERAL TOLERANCES (UNLESS SPECIFIED)		DIMENSION STYLE MM ONLY		SCALE NTS	DESIGN UNITS METRIC	THIRD ANGLE PROJECTION		
			mm	INCH	DRAWN BY R. BIAN	DATE 2005/05/20	TITLE <b>EXPRESSCARD 34MM          BOTTOM MOUNT          PUSH-PUSH TYPE</b>			
		4 PLACES	$\pm$ ---	$\pm$ ---	CHECKED BY HARVEY	DATE 2006/04/18				
		3 PLACES	$\pm$ ---	$\pm$ ---	APPROVED BY JENNY	DATE 2006/04/18	MOLEX INCORPORATED			
	2 PLACES	$\pm 0.25$	$\pm$ ---	MATERIAL NO. 47322-0002	DOCUMENT NO. SD-47322-001	SHEET NO. 2 OF 4				
	1 PLACE	$\pm 0.30$	$\pm$ ---	DRAFT WHERE APPLICABLE MUST REMAIN WITHIN DIMENSIONS						
	ANGULAR		$\pm 3^\circ$	THIS DRAWING CONTAINS INFORMATION THAT IS PROPRIETARY TO MOLEX INCORPORATED AND SHOULD NOT BE USED WITHOUT WRITTEN PERMISSION						
A1	REV									

10 9 8 7 6 5 4 3 2 1

F F

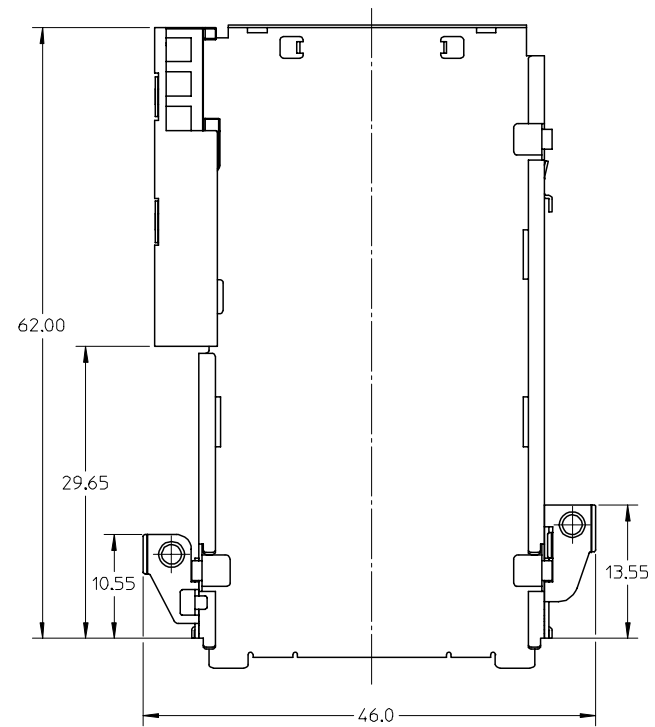
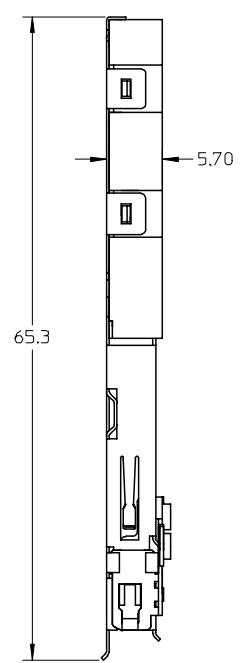
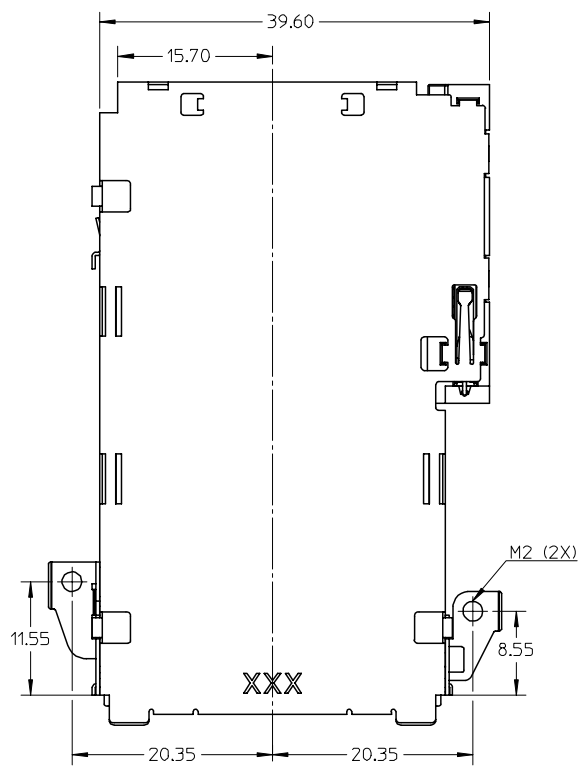
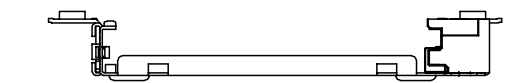
E E

D D

C C

B B

A A



NOTES:

1. CONNECTOR DESIGN BASED ON EXPRESSCARD STANDARD;
2. THIS SLOT CAN ACCEPT ONLY 34MM EXPRESSCARD;
3. WHEN DELIVERING, THE CAM SLIDER MUST KEEP RELEASE STATUS;
4. PRODUCT SPEC PLEASE REFER TO PS-47277-001;
5. MATERIAL:

- COIL SPRING: PIANO STEEL
- EJECTOR HOUSING: NYLON 46
- HOUSING SLOT: NYLON 46
- SHELL: STAINLESS STEEL
- CAM PIN: STAINLESS STEEL

6. 47322-0003 COMPLIANT TO RoHS DIRECTIVE 2002/95/EC AND ELV DIRECTIVE 2000/53/EC.

EC NO: SH2007-0352 DRWN: OCHEN 2006/11/17 CHKD: HARVEY 2006/11/22 APPR: JNCHEN 2006/11/28	QUALITY SYMBOLS ▽=0 ▽=0	GENERAL TOLERANCES (UNLESS SPECIFIED)		DIMENSION STYLE MM ONLY		SCALE NTS	DESIGN UNITS METRIC	THIRD ANGLE PROJECTION	
		4 PLACES ± --- ± --- 3 PLACES ± --- ± --- 2 PLACES ± 0.25 ± --- 1 PLACE ± 0.30 ± --- ANGULAR ± 3 °	mm INCH	DRAWN BY R. BIAN	DATE 2005/05/20	TITLE EXPRESSCARD 34MM BOTTOM MOUNT PUSH-PUSH TYPE		MOLEX INCORPORATED	
A1	REV DESCRIPTION	DRAFT WHERE APPLICABLE MUST REMAIN WITHIN DIMENSIONS		APPROVED BY JENNY	DATE 2006/04/18	MATERIAL NO. 47322-0003	DOCUMENT NO. SD-47322-001	SHEET NO. 3 OF 4	
		THIS DRAWING CONTAINS INFORMATION THAT IS PROPRIETARY TO MOLEX INCORPORATED AND SHOULD NOT BE USED WITHOUT WRITTEN PERMISSION							

9 8 7 6 5 4 3 2 1

10 9 8 7 6 5 4 3 2 1

F

E

D

C

B

A

F

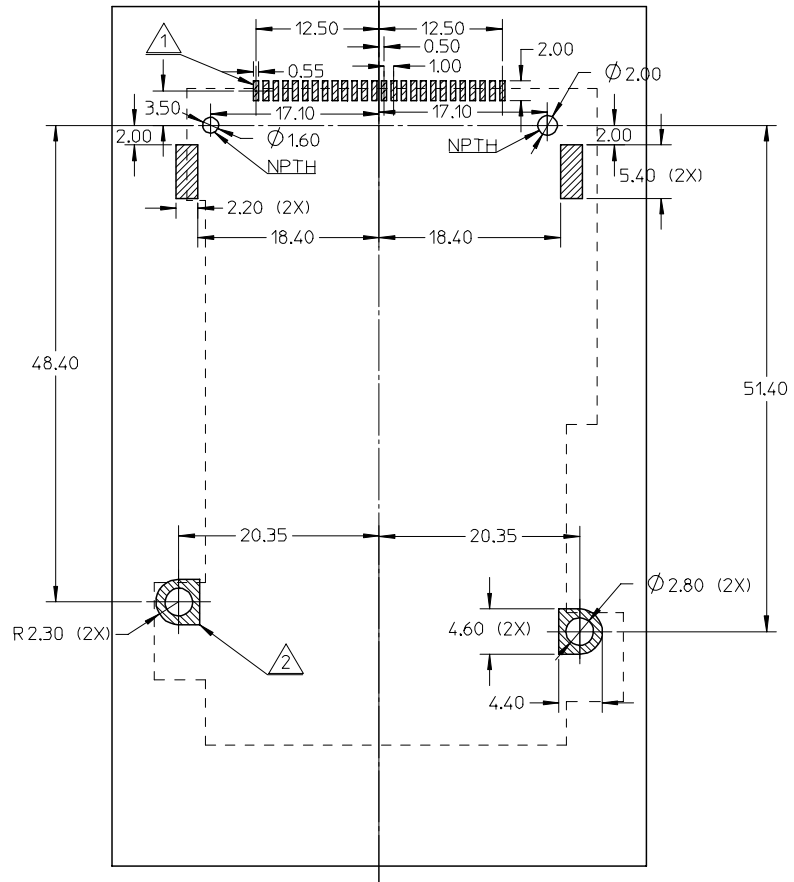
E

D

C

B

A



NOTES:

- 1. SOLDER PAD AREA
- 2. GROUNDING PAD AREA

RECOMMENDED PCB LAYOUT  
COMPONENT SIDE

EC NO: SH2007-0352 DRWN: OCHEN 2006/11/17 CHKD: HARVEY 2006/11/22 APPR: JNCHEN 2006/11/28	QUALITY SYMBOLS	GENERAL TOLERANCES (UNLESS SPECIFIED)		DIMENSION STYLE	SCALE	DESIGN UNITS	THIRD ANGLE PROJECTION	
	$\nabla = 0$ $\sphericalangle = 0$	mm	INCH	MM ONLY	NTS	METRIC		
		4 PLACES ± ---	± ---	DRAWN BY	DATE	TITLE		
		3 PLACES ± ---	± ---	R. BIAN	2005/05/20	EXPRESSCARD 34MM BOTTOM MOUNT PUSH-PUSH TYPE		
	2 PLACES ± 0.05	± ---	CHECKED BY	DATE	MOLEX INCORPORATED			
	1 PLACE ±	± ---	HARVEY	2006/04/18	SD-47322-001			
		ANGULAR ± 3 °	APPROVED BY	DATE	SHEET NO.			
			JENNY	2006/04/18	4 OF 4			
			MATERIAL NO.	N/A	THIS DRAWING CONTAINS INFORMATION THAT IS PROPRIETARY TO MOLEX INCORPORATED AND SHOULD NOT BE USED WITHOUT WRITTEN PERMISSION			
A1	REV	DRAFT WHERE APPLICABLE MUST REMAIN WITHIN DIMENSIONS		SIZE				
				A3				

9 8 7 6 5 4 3 2 1