

# Crystal filter QF70.0-9000/06



## Application

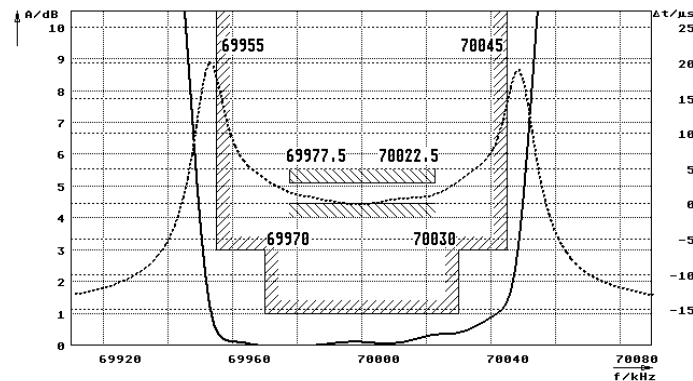
- 6 pol filter
- i.f.- filter
- use in mobile and stationary transceivers

## Limiting values

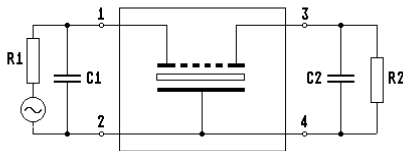
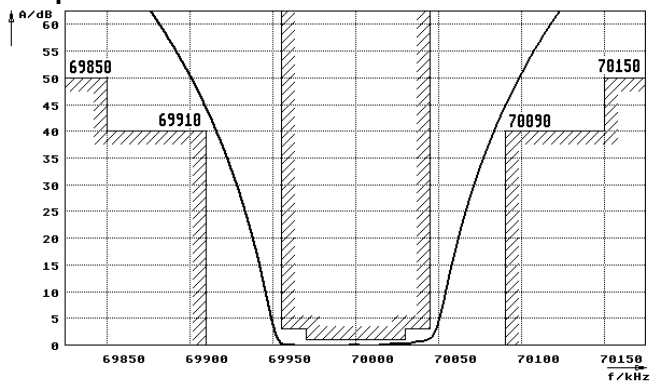
		Unit	Value
Nominal frequency	$f_0$	MHz	70.0
Insertion loss		dB	< 6.0
Pass band at 3.0dB		kHz	$\pm > 45$
Ripple in pass band	$f_0 \pm 30$ kHz	dB	< 1.0
Stop band attenuation	$f_0 \pm 90$ kHz	dB	> 40
	$f_0 \pm 150$ kHz	dB	> 50
Alternate attenuation		dB	> 70 except spurious
Spurious responses		dB	> 50
Group delay distortion	$f_0 \pm 22.5$ kHz	$\mu$ s	< 3
	$f_0 \pm 45$ kHz	$\mu$ s	< 25
Maximum input level	without damage	dBm	+ 10
Terminating impedance Z			
R1  C1		Ohm/pF	50    0
R2  C2		Ohm/pF	50    0
Operating temp. range		°C	-20... +70
Storage temp. range		°C	-45... +85
Environment conditions			according to CF001

## Characteristics QF70.0-9000/06

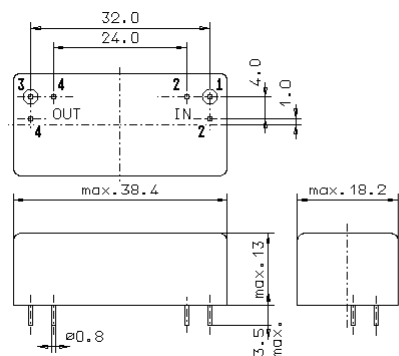
### Pass band



### Stop band



- Pin connections:
- 1 Input
  - 2 Ground-Input
  - 3 Output
  - 4 Ground-Output



GM17