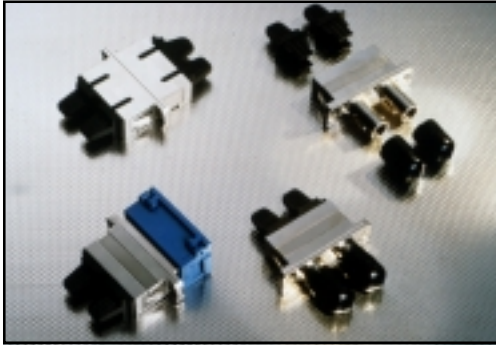


Metal SC-ST & SC-SC Duplex Adapters



Features & Benefits

- Metal housing
- Quick and easy mounting
- Mounting holes and metal clip
- Alignment sleeve: zirconia or phosphor bronze
- Singlemode and multimode applications
- Compatible with Molex SC duplex shutters
- Designed to IEC and NTT standards

Applications

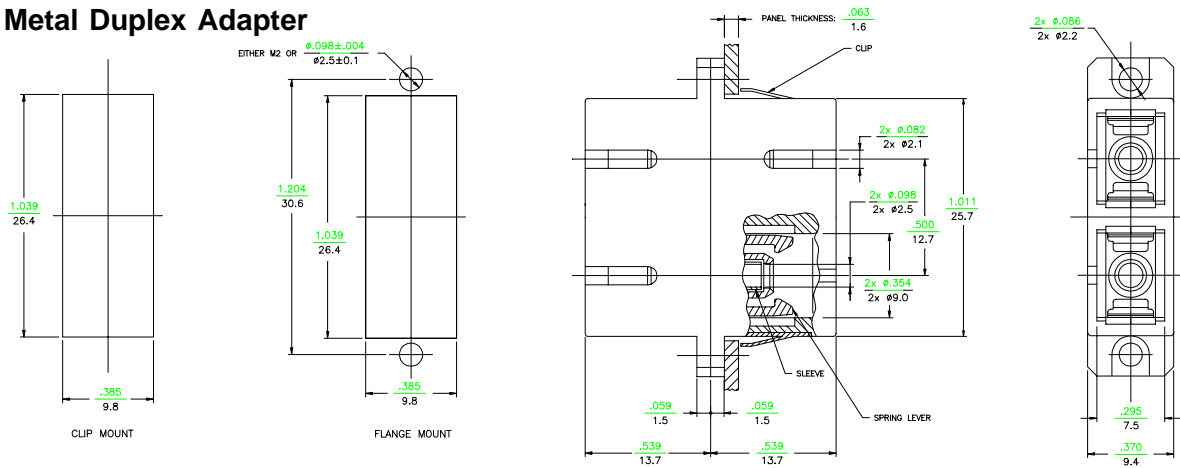
- Local Area Networks (LAN's)
- Telecommunication networks

Molex offers SC-ST* and SC-SC duplex adapters in metal housings with zirconia or phosphor bronze alignment sleeves suitable for singlemode and multimode applications. The adapter housing integrates both a metal clip for snap mount and two mounting holes (with or without thread) for flange mount. This eases the adapter installation. These adapters are compatible with Molex plastic SC duplex shutters which are available in different colors.

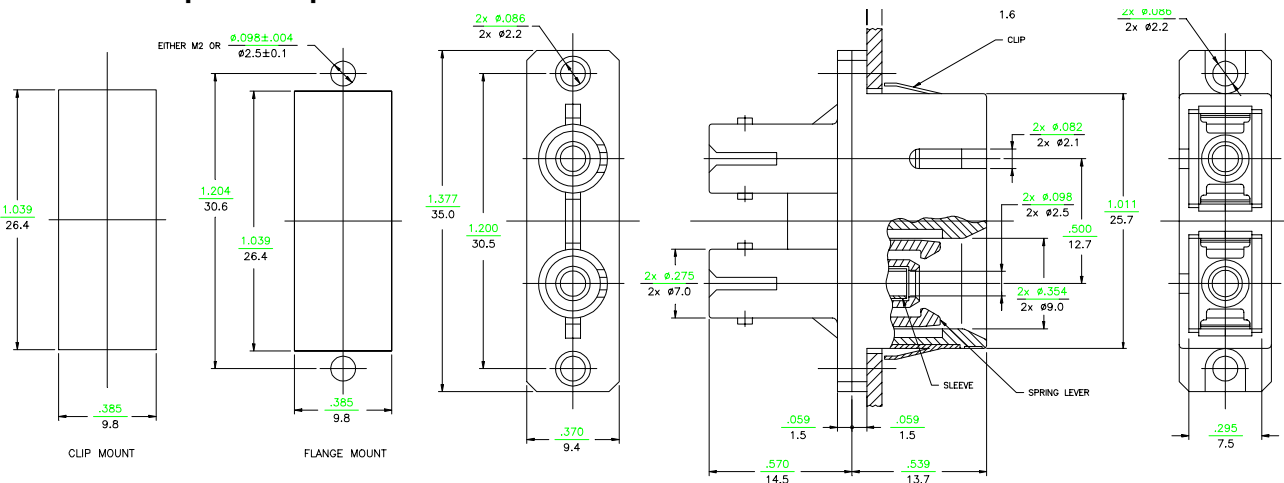
*ST is a registered trademark of Lucent Technologies

Mechanical Dimensions

SC-SC Metal Duplex Adapter



SC-ST Metal Duplex Adapter



Standard Part Numbers

Order Number

85335-0009
85335-0010
85335-0013
85335-0014

Description

SC-ST metal duplex adapter, zirconia alignment sleeve, mounting holes without thread
SC-ST metal duplex adapter, phosphor bronze alignment sleeve, mounting holes without thread
SC-SC metal duplex adapter, zirconia alignment sleeve, mounting holes without thread
SC-SC metal duplex adapter, phosphor bronze alignment sleeve, mounting holes without thread

86001-0088 Rev. 2

USA/30MFO/2000.09

©2000, Molex

Molex reserves the right to make any changes to the product(s) or information contained herein without notice. No liability is assumed as a result of their use or application.

MOLEX FIBER OPTICS DIVISION 5224 Katrine Avenue, Downers Grove, IL 60515 / Tel: 800-A1-FIBER or (630) 512-8787 Web: www.molex.com/fiber