

PLEASE CHECK WWW.MOLEX.COM FOR LATEST PART INFORMATION

Part Number: [0050579707](#)
Status: **Active**
Overview: [cgrid_sl_products](#)
Description: 2.54mm (.100") SL™ Crimp Housing, Single Row, Version N, TPA™ with Positive Latch, 7 Circuits

Documents:

| | |
|---|--|
| 3D Model | Product Specification PS-70400 (PDF) |
| Drawing (PDF) | RoHS Certificate of Compliance (PDF) |
| Packaging Specification (PDF) | |

Agency Certification

| | |
|-----|-----------|
| CSA | LR19980 |
| TUV | R72081037 |
| UL | E29179 |

General

| | |
|----------------|-----------------------------------|
| Product Family | Crimp Housings |
| Series | 70066 |
| Comments | Version N |
| Overview | cgrid_sl_products |
| Product Name | SL™ |

Physical

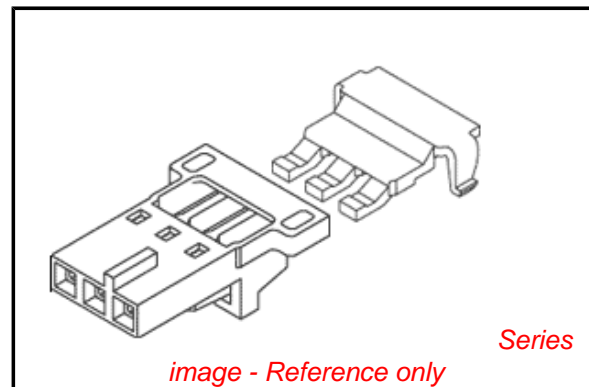
| | |
|-------------------------------|-----------------|
| Circuits (maximum) | 7 |
| Color - Resin | Black |
| Flammability | 94V-0 |
| Gender | Female |
| Glow-Wire Compliant | No |
| Material - Resin | Polyester Alloy |
| Number of Rows | 1 |
| Packaging Type | Bag |
| Panel Mount | No |
| Pitch - Mating Interface (in) | 0.100 In |
| Pitch - Mating Interface (mm) | 2.54 mm |
| Stackable | No |
| Temperature Range - Operating | -40°C to +105°C |

Material Info

| | |
|-----------------|------------|
| Old Part Number | 70066-0391 |
|-----------------|------------|

Reference - Drawing Numbers

| | |
|-------------------------|--------------|
| Packaging Specification | PK-70066-100 |
| Product Specification | PS-70400 |
| Sales Drawing | SD-70066-386 |



EU RoHS

ELV and RoHS Compliant
REACH SVHC Contains SVHC: No
Halogen-Free Status

China RoHS



Need more information on product environmental compliance?

Email productcompliance@molex.com
 For a multiple part number RoHS Certificate of Compliance, [click here](#)

Please visit the [Contact Us](#) section for any non-product compliance questions.

Search Parts in this Series

[70066Series](#)

Mates With

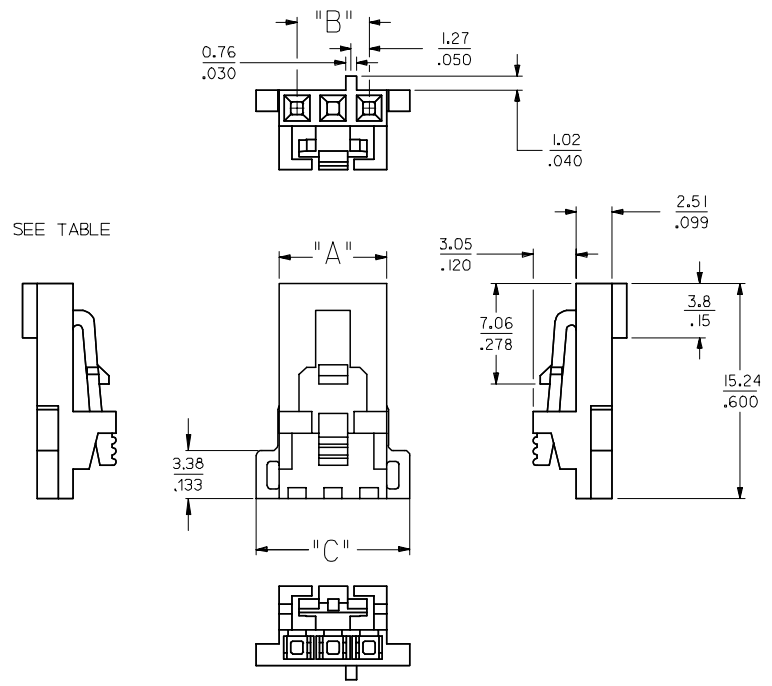
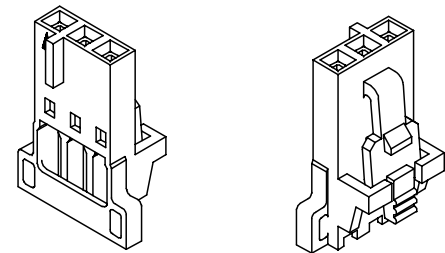
[70018](#) , [70543](#) , [70545](#) , [70553](#) , [70555](#) ,

Use With

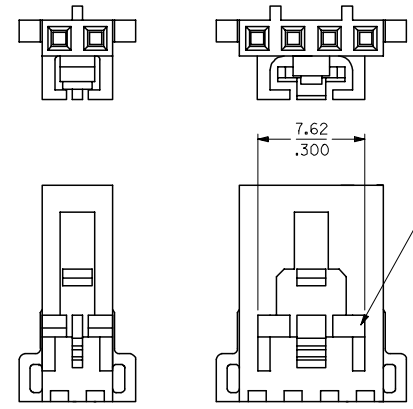
[70058](#) , [71851](#) , [73838](#)

| CKT SIZE | EDP. NUMBER | ENG. NUMBER | DIM. 'A' | DIM. 'B' | DIM. 'C' |
|----------|-------------|-------------|----------------|----------------|----------------|
| 2 | 050-57-9702 | 70066-0386 | (5.00) / .197 | (2.54) / .100 | (8.26) / .325 |
| 3 | 050-57-9703 | 70066-0387 | (7.54) / .297 | (5.08) / .200 | (10.80) / .425 |
| 4 | 050-57-9704 | 70066-0388 | (10.08) / .397 | (7.62) / .300 | (13.34) / .525 |
| 5 | 050-57-9705 | 70066-0389 | (12.62) / .497 | (10.16) / .400 | (15.88) / .625 |
| 6 | 050-57-9706 | 70066-0390 | (15.16) / .597 | (12.70) / .500 | (18.42) / .725 |
| 7 | 050-57-9707 | 70066-0391 | (17.70) / .697 | (15.24) / .600 | (20.96) / .825 |
| 8 | 050-57-9708 | 70066-0392 | (20.24) / .797 | (17.78) / .700 | (23.50) / .925 |

TERMINAL POSITION ASSURANCE (TPA) OPTION "N"



2 CKT CONFIGURATION 4 THRU 8 CKT CONFIGURATION



- NOTES:
- 1) HOUSING, OPTION "N" FOR USE WITH TERMINAL RETENTION SUPPORT SERIES #73838 AND CONTACT SERIES NUMBERS 70058 AND 71851.
 - 2) REFER TO CHART FOR AVAILABLE CIRCUIT SIZES.
 - 3) MATERIAL: GLASS FILLED POLYESTER, .94V-0, COLOR: BLACK
 - 4) PACKAGE PER PK-70066-100.

| ADD'D DIMENSION FCC NO: UCP2007-1403 DRAWN: DANIELLEY 2007/01/09 CHK'D: BARKER 2007/01/15 APP'R: MILLER 2007/01/15 REVISION SYMBOLS ▽=0 ▽=0 | GENERAL TOLERANCES (UNLESS SPECIFIED) | | DIMENSION STYLE MM/IN | | SCALE 4:1 | DESIGN UNITS METRIC | THIRD ANGLE PROJECTION | | | | | | | | | | | | | | | | | | | | | | | | | | | |
|--|---|-----------|--------------------------|--|--------------|------------------------|------------------------|----------|-------|--------|----------|-------|--------|---------|-------|--------|--|----------|------|-----------|------------|------------|------|-----------|------------|-------------|------|----------|------------|---|--|------------------------------|--------------|---------------------|
| | <table border="1" style="width: 100%; border-collapse: collapse;"> <thead> <tr> <th></th> <th>mm</th> <th>INCH</th> </tr> </thead> <tbody> <tr> <td>4 PLACES</td> <td>± .15</td> <td>± .005</td> </tr> <tr> <td>3 PLACES</td> <td>± .25</td> <td>± .010</td> </tr> <tr> <td>2 PLACES</td> <td>± .38</td> <td>± .015</td> </tr> <tr> <td>1 PLACE</td> <td>± .50</td> <td>± .020</td> </tr> </tbody> </table> | | mm | INCH | 4 PLACES | ± .15 | ± .005 | 3 PLACES | ± .25 | ± .010 | 2 PLACES | ± .38 | ± .015 | 1 PLACE | ± .50 | ± .020 | <table border="1" style="width: 100%; border-collapse: collapse;"> <thead> <tr> <th>DRAWN BY</th> <th>DATE</th> </tr> </thead> <tbody> <tr> <td>RE ISDORF</td> <td>12/23/1998</td> </tr> <tr> <th>CHECKED BY</th> <th>DATE</th> </tr> <tr> <td>RE ISDORF</td> <td>12/23/1998</td> </tr> <tr> <th>APPROVED BY</th> <th>DATE</th> </tr> <tr> <td>BRINKMAN</td> <td>12/23/1998</td> </tr> </tbody> </table> | DRAWN BY | DATE | RE ISDORF | 12/23/1998 | CHECKED BY | DATE | RE ISDORF | 12/23/1998 | APPROVED BY | DATE | BRINKMAN | 12/23/1998 | TITLE HOUSING, SL CRIMP FOR TERMINAL POSITION ASSURANCE, SALES DRAWING | | MATERIAL NO. SD-70066-386 | DOCUMENT NO. | SHEET NO. 1 OF 1 |
| | | mm | INCH | | | | | | | | | | | | | | | | | | | | | | | | | | | | | | | |
| | 4 PLACES | ± .15 | ± .005 | | | | | | | | | | | | | | | | | | | | | | | | | | | | | | | |
| 3 PLACES | ± .25 | ± .010 | | | | | | | | | | | | | | | | | | | | | | | | | | | | | | | | |
| 2 PLACES | ± .38 | ± .015 | | | | | | | | | | | | | | | | | | | | | | | | | | | | | | | | |
| 1 PLACE | ± .50 | ± .020 | | | | | | | | | | | | | | | | | | | | | | | | | | | | | | | | |
| DRAWN BY | DATE | | | | | | | | | | | | | | | | | | | | | | | | | | | | | | | | | |
| RE ISDORF | 12/23/1998 | | | | | | | | | | | | | | | | | | | | | | | | | | | | | | | | | |
| CHECKED BY | DATE | | | | | | | | | | | | | | | | | | | | | | | | | | | | | | | | | |
| RE ISDORF | 12/23/1998 | | | | | | | | | | | | | | | | | | | | | | | | | | | | | | | | | |
| APPROVED BY | DATE | | | | | | | | | | | | | | | | | | | | | | | | | | | | | | | | | |
| BRINKMAN | 12/23/1998 | | | | | | | | | | | | | | | | | | | | | | | | | | | | | | | | | |
| DRAFT WHERE APPLICABLE MUST REMAIN WITHIN DIMENSIONS | | SEE TABLE | | THIS DRAWING CONTAINS INFORMATION THAT IS PROPRIETARY TO MOLEX INCORPORATED AND SHOULD NOT BE USED WITHOUT WRITTEN PERMISSION | | | | | | | | | | | | | | | | | | | | | | | | | | | | | | |