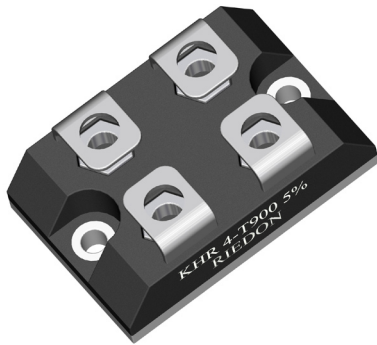


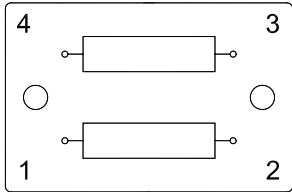
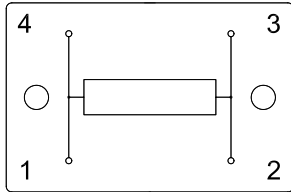
# KHR 4-T600 T900

Power Resistors



- Resistances from 100Ohm to 1kOhms
- Power Rating to 900Watt
- Resistance Tolerances to  $\pm 10\%$
- TCR to  $\pm 100\text{ppm/K}$
- TO-227 (TO-238) Housing

## SPECIFICATIONS

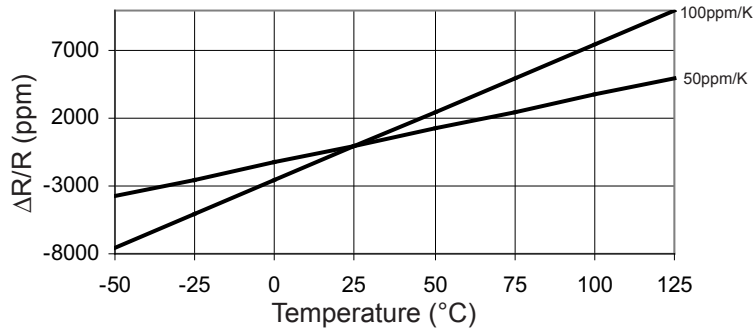
Type	KHR 4-T600	KHR 4-T900
Resistance Range	100 Ohms to 1kOhm	
Number of Resistors	double 	single 
Power Rating with Heatsink	600 W	900 W
Thermal Resistance Rthj-c	0.22 K/W	0.15 K/W
Tolerances	$\pm 10\%$ other Tolerances upon request	
Load Life	1%	
Short Time Overload	Rated Power x 2.5 (2.5 seconds monted on heatsink)	
Temperature Coefficient	$\pm 100\text{ppm/K}$	
Max. Voltage	$E = \sqrt{P \times R}$	
Voltage Proof	2.5kVAC	
Operating Temperature Range	-55 to 155°C	
Resistor Material	Thinfilm	
Substrate	AlN	
Housing	PCB	
Connector Material	Cu nickel plated	
Terminals	4	

## Ordering Information

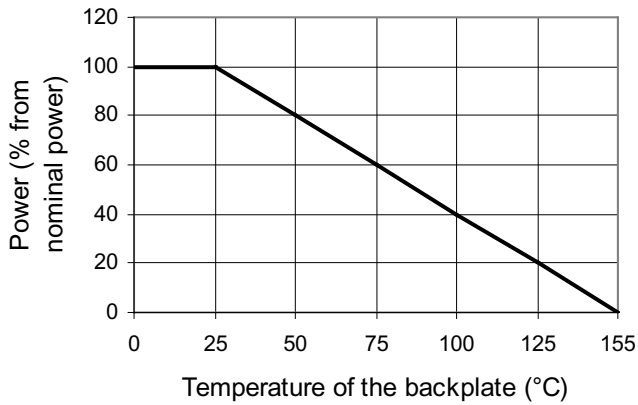
Part Number - Resistance - Tolerance  
KHR 4-T900 10.5 kOhms 10%

**SPECIFICATIONS** (continued)

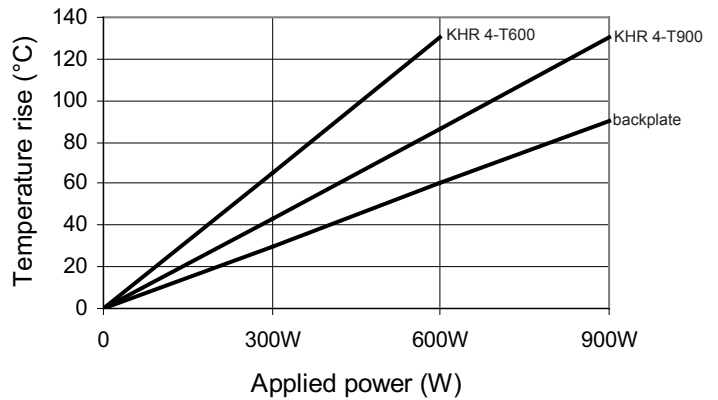
**Temperature Coefficient**



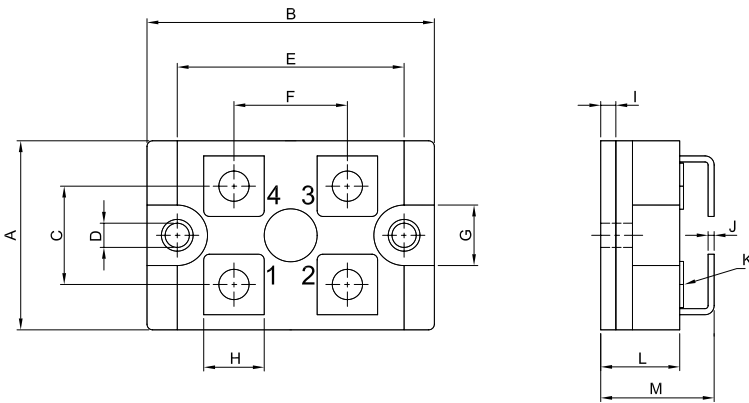
**Derating**



**Temperature Rise**



**Dimensions**



Dimension	mm	tol. (±mm)	inches	tol. (±inches)
A	25.00	0.5	0.98	0.020
B	38.00	0.5	1.50	0.020
C	13.00	0.5	0.51	0.020
D	3.20	0.1	0.13	0.004
E	30.00	0.2	1.18	0.008
F	15.00	0.5	0.59	0.020
G	8.00	0.2	0.31	0.008
H	8.00	0.2	0.31	0.008
I	2.00	0.2	0.08	0.008
J	0.80	0.1	0.03	0.004
K	M4		M4	
L	10.45	0.2	0.41	0.008
M	15.00	1.0	0.59	0.020