

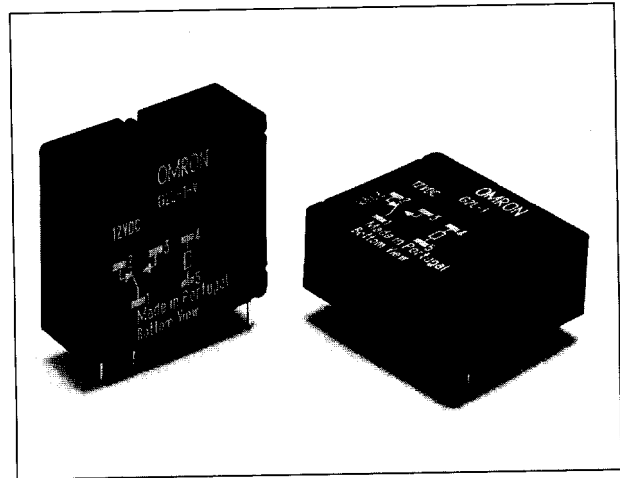
# OMRON

## PCB Relay

## G2L

### Miniature High Switching Capacity PCB Relay

- Available in horizontal (flatpack) or vertical mounting styles.
- Plastic sealed.
- Conforms to VDE0110 Group C/250 for clearance and creepage distance.
- Approval to VDE, SEV, UL and CSA Standards.
- 2.5mm terminal pitch.



### Ordering Information

#### Standard

Contact form	Flat	Vertical
SPDT	G2L-1	G2L-1-V

**Note:** When ordering, add the rated coil voltage to the model number.  
 Example: G2L-1 12 VDC  
 Rated coil voltage

#### Model Number Legend:

G2L -  -  -  - VDC  
 1      2      3

1. **Contact Form**  
 1: SPDT

2. **Appearance**  
 None: Flat type  
 V: Vertical type

3. **Coil Voltage**  
 6, 12, 24, 48 VDC

### Specifications

#### ■ Coil Ratings

Rated voltage	6 VDC	12 VDC	24 VDC	48 VDC
Rated current	75 mA	36.4 mA	20 mA	10.2 mA
Coil resistance	80 Ω	330 Ω	1200 Ω	4700 Ω
Must operate voltage	70% max. of rated voltage			
Must release voltage	10% min. of rated voltage			
Max. voltage	110% (at 20°C) of rated voltage			
Power consumption	Approx. 450 mW			

**Note:** 1. The rated current and coil resistance are measured at a coil temperature of 20°C with a tolerance of +15%.

#### ■ Contact Ratings

Item	Resistive load (cosφ = 1)	Inductive load (cosφ = 0.4; L/R = 7 ms)
Rated load	8 A at 230 VAC; 8 A at 24 VDC	5 A at 230 VAC; 5 A at 24 VDC
Contact material	AgCdO	
Rated carry current	8 A	
Max. switching voltage	250 VAC, 250 VDC	
Max. switching current	AC: 8 A; DC: 8 A	AC: 5 A; DC: 5 A

Item	Resistive load ( $\cos\phi = 1$ )	Inductive load ( $\cos\phi = 0.4$ ; L/R = 7 ms)
Max. switching capacity	2,000 VA, 200 W	1,000 VA, 120 W
Min. permissible load	100 mA at 24 VDC	

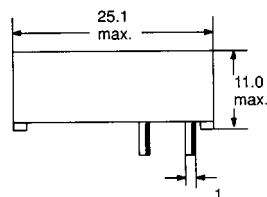
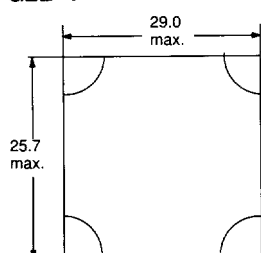
## ■ Characteristics

Operate time	15 ms max.
Release time	10 ms max.
Max. operating frequency	Electrical: 400 operations/hr (at maximum switching capacity)
Dielectric withstand voltage	4 kVAC, 50/60 Hz for 1 min between coil and contacts
Vibration resistance	Destruction: 10 to 55 Hz, 1.5-mm double amplitude Malfunction: 10 to 55 Hz, 0.8-mm double amplitude
Shock resistance	Destruction: 1,000 m/s <sup>2</sup> (approx. 100G) Malfunction: 100 m/s <sup>2</sup> (approx. 10G)
Life expectancy	Mechanical: 10,000,000 operations min. Electrical: 100,000 operations min.
Ambient temperature	Operating: -40°C to 70°C (with no icing)
Ambient humidity	Operating: 45% to 85%
Weight	Approx. 20 g

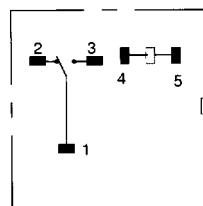
Note: The data shown above is at initial value.

## Dimensions

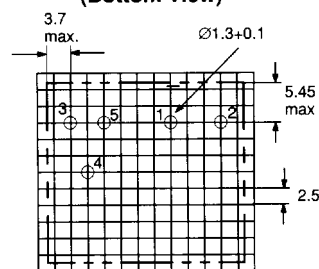
### G2L-1



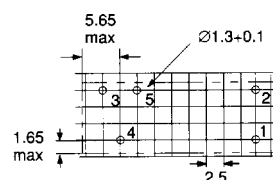
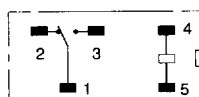
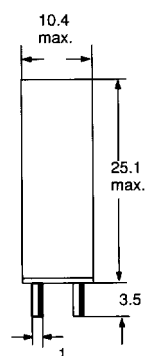
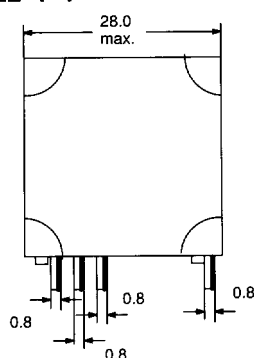
### Terminal Arrangement/ Internal Connections (Bottom View)



### Mounting hole layout (Bottom View)



### G2L-1-V



**ALL DIMENSIONS SHOWN ARE IN MILLIMETRES.**

To convert millimetres into inches, multiply by 0.03937. To convert grams into ounces, multiply by 0.03527.

Cat. No. C-G2L-001 In the interest of product improvement, specifications are subject to change without notice

# OMRON

LEADERS IN ELECTRONIC COMPONENTS

## OMRON Electronics Ltd.

1, Apsley Way,  
Staples Corner,  
London NW2 7HF  
Phone: (081) 450 4646 Fax: (081) 450 8087