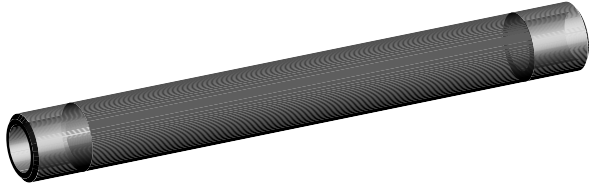


Carbon Film Resistors, Special Purpose High Frequency Load (Tubes)



FEATURES

- High stability and excellent high frequency characteristics
- Particularly suited for high frequency applications involving high power, high accuracy RF measurements
- Carbon film construction

APPLICATIONS

High frequency wattmeters for output measurement in radio, TV and radar transmitters, dielectric heating and similar RF generating equipment. Ideal for use as non-reactive radio frequency terminations. Special high power designs with internal water cooling are available. Contact factory.

STANDARD ELECTRICAL SPECIFICATIONS

MODEL	POWER RATING WATTAGE FREE AIR @ + 25°C	RESISTANCE TOLERANCE	LINEARITY TOLERANCE	RESISTANCE RANGE	TEMPERATURE COEFFICIENT
SPW-236	120	± 2%, ± 5%	± 10%	50 ohm standard. Other values available on special order.	± 200ppm/°C average ± 250ppm/°C maximum
SPW-227	55	± 2%, ± 5%	± 10%		
SPW-210	40	± 2%, ± 5%	± 10%		
SPW-214	10	± 2%, ± 5%	± 10%		
SPW-212	2	± 2%, ± 5%	± 10%		

Cooling:

Approximate increase in wattage when forced air cooling is employed is 3 times wattages shown and for liquid cooling (with heat exchanger) is 60 times wattages shown. The limiting factor insofar as the resistor is concerned is the film temperature. This should not exceed +200°C and for maximum stability should not exceed +150°C.

MECHANICAL SPECIFICATIONS

Identification:	Type designation resistance value, tolerance and code date of manufacture are printed on each unit.
Terminations:	All types electroplated copper except SPW-212. The SPW-212 has silver coated termination bands.

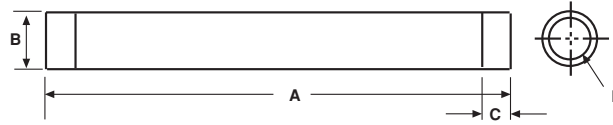
MARKING

- DALE
- Model
- Value
- Tolerance
- Date code

ORDERING INFORMATION

SPW MODEL	210 SIZE	50 VALUE	5 TOLERANCE
	210 227 212 236 214	25 ohm - 600 ohm available depending on model. Please consult factory.	± 2% ± 5% ± 10%

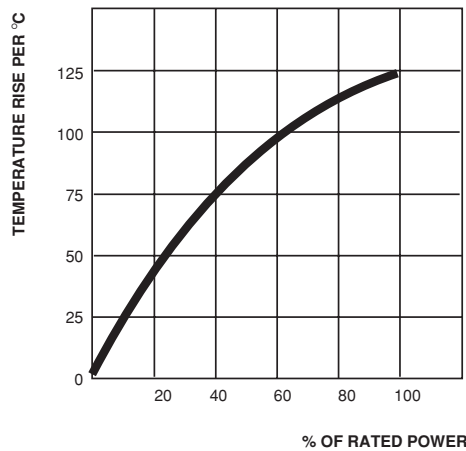
DIMENSIONS in inches [millimeters]



MODEL	A	B	C (o.d.)	D (i.d.)
SPW-236	18.0 ± 0.062 [457.20 ± 1.57]	1.75 ± 0.025 [44.45 ± 0.64]	1.0 ± 0.063 [25.40 ± 1.60]	1.25 ± 0.025 [31.75 ± 0.64]
SPW-227	12.0 ± 0.062 [304.80 ± 1.57]	1.125 ± 0.025 [28.58 ± 0.64]	0.500 ± 0.032 [12.70 ± 0.81]	0.875 ± 0.020 [22.23 ± 0.51]
SPW-210	12.0 ± 0.062 [304.80 ± 1.57]	.875 ± 0.010 [22.23 ± 0.25]	0.625 ± 0.032 [15.88 ± 0.81]	0.625 ± 0.020 [15.88 ± 0.51]
SPW-214	5.0 ± 0.032 [127.0 ± 0.81]	.562 ± 0.006 [14.27 ± 0.81]	0.500 ± 0.032 [12.70 ± 0.81]	0.375 ± 0.013 [9.53 ± 0.33]
SPW-212*	2.0 ± 0.062 [50.80 ± 1.57]	.250 ± 0.006 [6.35 ± 0.15]	0.250 ± 0.032 [6.35 ± 0.81]	Solid Rod

* Representative types only. Consult factory for special requirements.

- Note:** 1. C dimension may be varied on special order.
2. Wattage ratings do not allow for mounting hardware.



LOAD TEMPERATURE RISE
[Operation in Free Air]