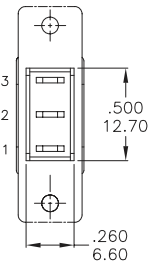
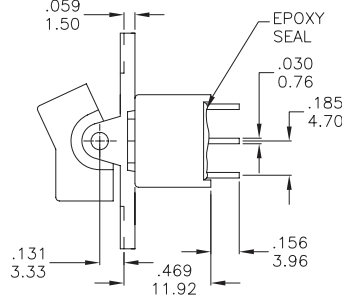
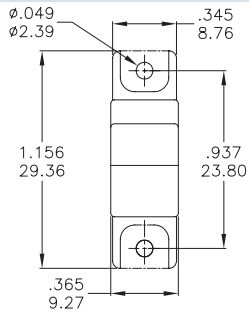


# Rocker Switches

## Sealed Miniature Rocker & Paddle Switches

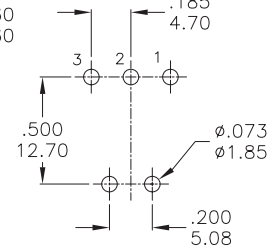
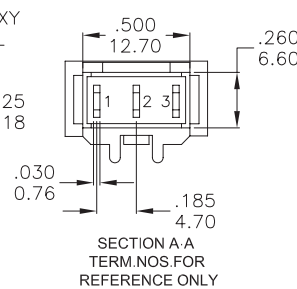
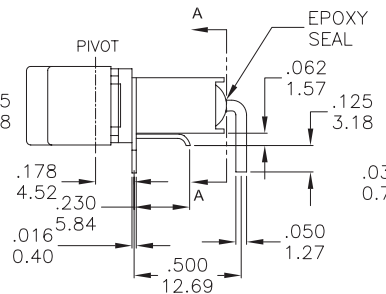
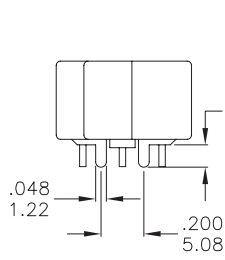
## RK14 Series

UL version available by request



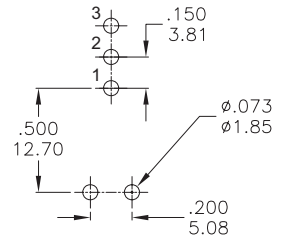
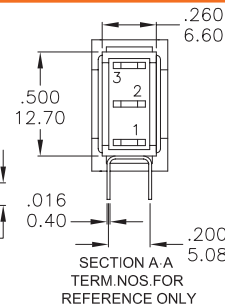
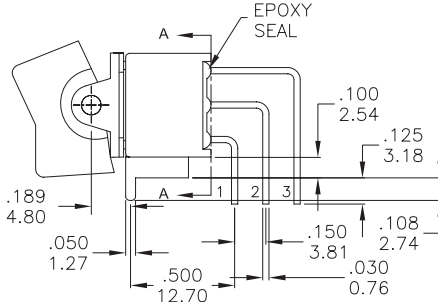
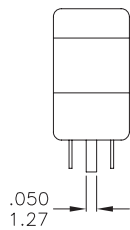
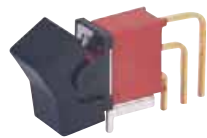
RK14S1A1NANT1AUEV

UL version available by request



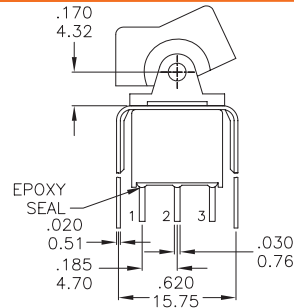
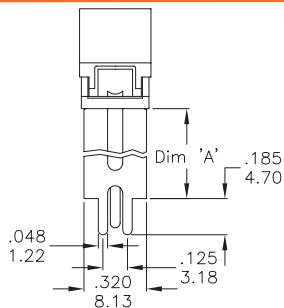
RK14S1J1NANT6AUEV

UL version available by request

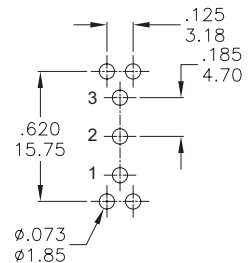


RK14S1J1NANT7AUEV

UL version available by request



OPTION CODE	DIM. 'A'
VS2	.460 11.68
VS3	.630 16.00



RK14S1J1NANVS2AUEV

### How to order:

RK14

#### 1 POLES & SWITCH FUNCTION:

- S1 SP ON-NONE-ON
- S2 SP ON- NONE-MOM
- S3 SP ON-OFF-ON
- S4 SP MOM-OFF-MOM
- S5 SP ON-OFF-MOM
- D1 DP ON-NONE-ON
- D2 DP ON-NONE-MOM
- D3 DP ON-OFF-ON
- D4 DP MOM.-OFF-MOM
- D5 DP ON-OFF-MOM
- D6 DP ON-ON-ON
- D7 DP MOM.-ON-MOM
- D8 DP ON-ON-MOM
- T1 3P ON-NONE-ON
- T2 3P ON-NONE-MOM
- T3 3P ON-OFF-ON
- T4 3P MOM.-OFF-MOM
- T5 3P ON-OFF-MOM

#### P.C.MOUNT Only

- J1 13.49 Long Rocker
- J2 Lever
- J3 23.01 Long Rocker
- J4 Lever
- J5 9.19 Long Rocker
- J6 Lever
- J7 Lever
- J8 Lever

#### 5 ACTUATOR MARKING

- |   |   |   |
|---|---|---|
| A | D | G |
| B | E | H |
| C | F | N |

#### 4 + 5 ACTUATOR & FRAME COLOR

- |               |           |
|---------------|-----------|
| A Black(Std.) | B White   |
| E Yellow      | C Red     |
| G Blue        | F Green   |
| H Grey        | K Brown   |
| D Orange      | N Without |

#### 6 TERMINALS:

- T1 Solder Lug
- T2 PC Thru-hole
- T3 Quick Connect
- T51 18.70 High, Wire Wrap
- T52 24.20 High, Wire Wrap
- T53 10.50 High, Wire Wrap
- T54 26.97 High, Wire Wrap
- T6 Right Angle, PC Thru-hole
- T6N Right Angle, Snap-in PC Thru-hole
- T7 Vertical Right Angle, PC Thru-hole
- VS2 11.68 High, V-bracket
- V2N 11.68 High, Snap-in, V-bracket
- VS3 16.00 High, V-bracket

#### 7 CONTACT MATERIAL:

- AG Silver
- AU Gold
- UT Gold, Tin-lead
- GT Silver, Tin-lead
- UG Gold over Silver
- UGT Gold over Silver, Tin-lead

#### 8 SEAL:

- E Epoxy (Standard)
- N No Epoxy

#### 9 ROHS & LEAD FREE:

- blank RoHS compliant
- V RoHS & lead free

### General Specifications:

#### MATERIALS

- » Movable Contact & Fixed Terminals:
  - AG, GT, UG & UGT: Silver plated over copper alloy
  - AU & UT: Gold over nickel plated over copper alloy
- » Actuator: Nylon
- » Bushing: Brass, nickel plated
- » Housing: Stainless Steel
- » Switch Support: Brass, tin plated.

#### MECHANICAL

- » Operating Temperature: -30°C to +85°C
- » Mechanical Life: 30,000 cycles

#### CONTACT RATING

- » AG, GT, UG & UGT: 5A 120VAC/28VDC  
2A 250VAC
- » AU & UT: 0.4 VA max. 20V max. (AC/DC)

#### ELECTRICAL

- » Contact Resistance: 10m Ω max. initial @ 2-4VDC for both silver & gold plated contacts
- » Insulation Resistance: 1,000M Ω min
- » Dielectric Strength: 1,000V RMS@sea level

# Rocker Switches

## Sealed Miniature Rocker & Paddle Switches

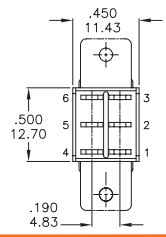
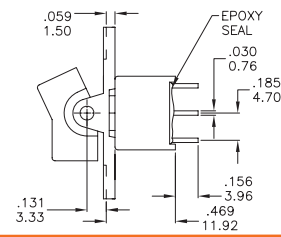
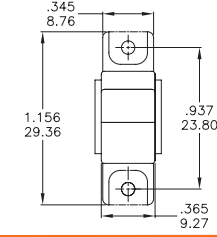
## RK14 Series



UL version available by request



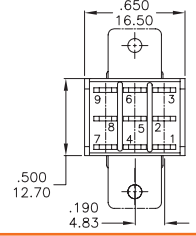
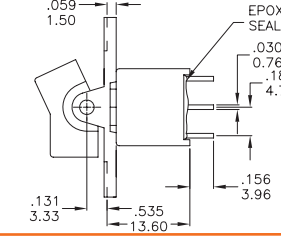
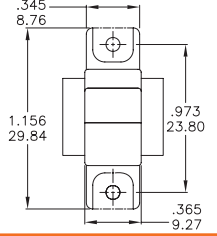
RK14D1A1NANT1AUEV



UL version available by request



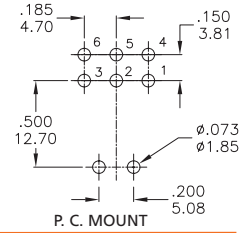
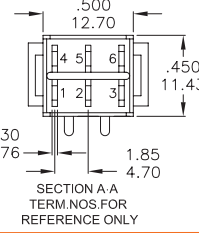
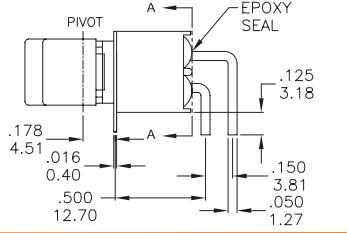
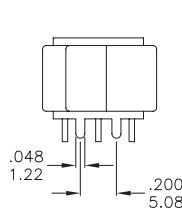
RK14T1A1NANT1AUEV



UL version available by request



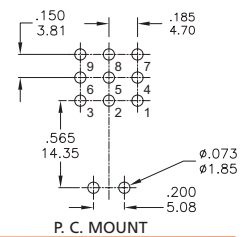
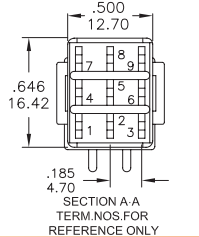
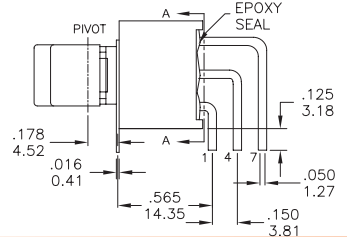
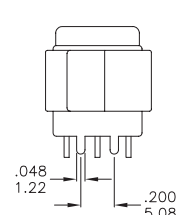
RK14D1J1NANT6AUEV



UL version available by request



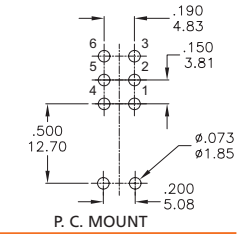
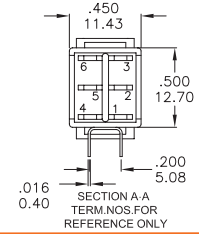
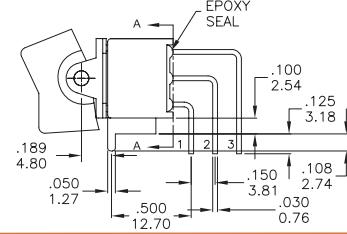
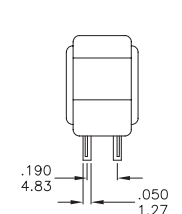
RK14T1J1NANT6AUEV



UL version available by request



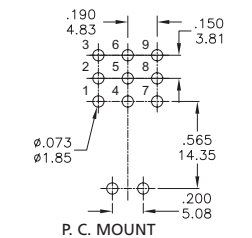
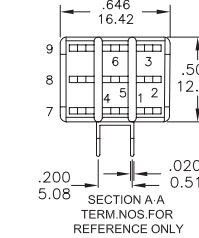
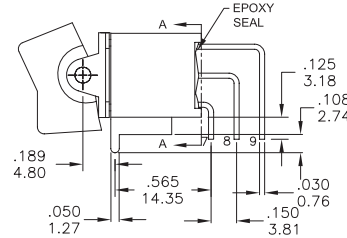
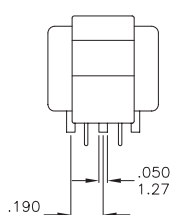
RK14D1J1NANT7AUEV



UL version available by request



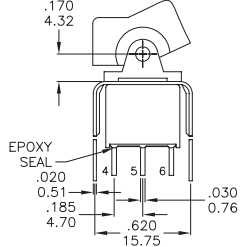
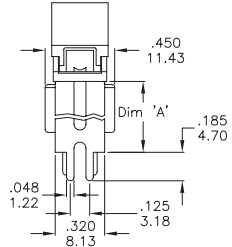
RK14T1J1NANT7AUEV



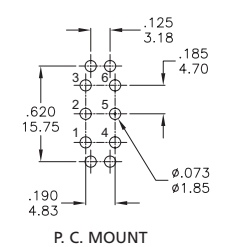
UL version available by request



RK14D1J1NANVS2AUEV



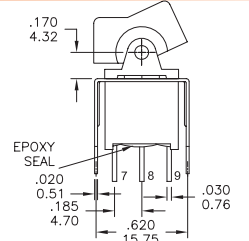
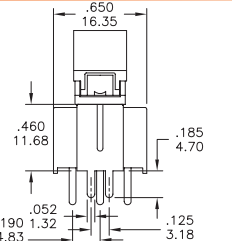
OPTION CODE	DIM. 'A'
VS2	.460 (11.68)
VS3	.630 (16.00)



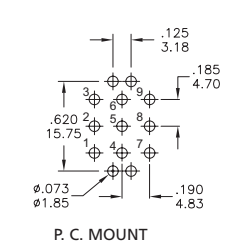
UL version available by request



RK14T1J1NANVS2AUEV



OPTION CODE	DIM. 'A'
VS2	.460 (11.68)
VS3	.630 (16.00)



# Rocker Switches

## Sealed Miniature Rocker & Paddle Switches

## RK14 Series

### SWITCH FUNCTION

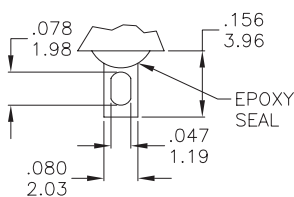
NO. POLES	MODEL NO.	SWITCH FUNCTION			CONNECTED TERMINALS / SCHEMATIC		
		POS.1	POS.2	POS.3	POS.1	POS.2	POS.3
SP	S1	ON	NONE	ON		N/A	
	S2	ON	NONE	MOM	2-3		2-1
	S3	ON	OFF	ON			
	S4	MOM	OFF	MOM	2<COMM>	OPEN	2<COMM>
	S5	ON	OFF	MOM	1 • 3		1 • 3
DP	D1	ON	NONE	ON		N/A	
	D2	ON	NONE	MOM	2-3,5-6		2-1,5-4
	D3	ON	OFF	ON			
	D4	MOM	OFF	MOM	2<COMM> 5	OPEN	2<COMM> 5
	D5	ON	OFF	MOM	1 • 3 4 • 6		1 • 3 4 • 6
	D6	ON	ON	ON			
	D7	MOM	ON	MOM	2-3,5-6	2-3,5-4	2-1,5-4
	D8	ON	ON	MOM			
3P	T1	ON	NONE	ON		N/A	
	T2	ON	NONE	MOM	2-3,5-6,8-9		2-1,5-4,8-7
	T3	ON	OFF	ON			
	T4	MOM	OFF	MOM	2<COMM> 8	OPEN	2<COMM> 8
	T5	ON	OFF	MOM	1 • 3 4 • 6 7 • 9		1 • 3 4 • 6 7 • 9

MOM=MOMENTARY

▲ Please check the availability in advance before order

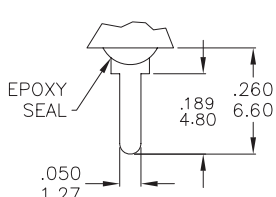
### TERMINATION OPTIONS

T1 SOLDER LUG



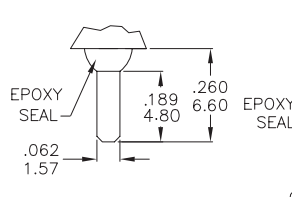
THK .030(0.76)

T2 PC THRU - HOLE



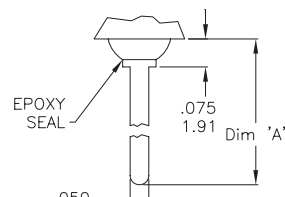
THK .030(0.76)

T3 QUICK CONNECT



THK .030(0.76)

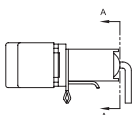
T5 WIRE WRAP



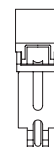
THK .030(0.76)

OPTION CODE	DIM. 'A'
T51	.737(18.70)
T52	.953(24.20)
T53	.415(10.55)
T54	1.062(26.97)

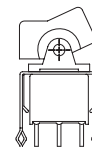
### SNAP - IN TERMINATION OPTIONS



T6N



V2N

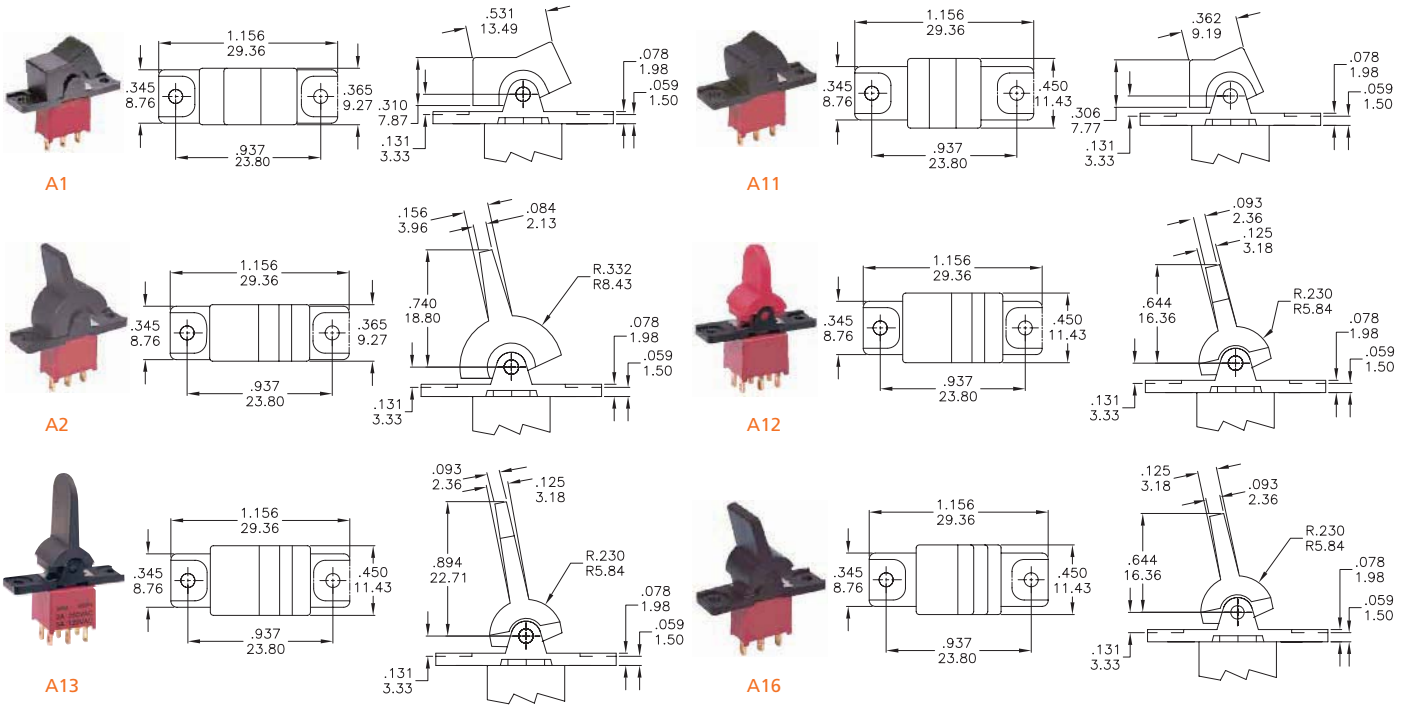


# Rocker Switches

## Sealed Miniature Rocker & Paddle Switches

## RK14 Series

### ACTUATOR OPTIONS FOR PANEL MOUNT ONLY



### ACTUATOR OPTIONS FOR P. C. MOUNT ONLY

