

**PLEASE CHECK WWW.MOLEX.COM FOR LATEST PART INFORMATION**

**Part Number:** [0877940002](#)  
**Status:** **Active**  
**Description:** 2.50mm (.098") / 3.00mm (.118") Pitch Wire-to-Board Receptacle Housing with Fuse, with Side Flange, 16 Circuits

**Documents:**

[Drawing \(PDF\)](#) [RoHS Certificate of Compliance \(PDF\)](#)  
[Product Specification PS-87527-001 \(PDF\)](#)

**General**

Product Family Crimp Housings  
 Series [87794](#)  
 Product Name N/A

**Physical**

Circuits (maximum) 16  
 Gender Female  
 Glow-Wire Compliant No  
 Lock to Mating Part Yes  
 Number of Rows 2  
 Packaging Type Bag  
 Panel Mount No  
 Pitch - Mating Interface (in) 0.098 In, 0.118 In  
 Pitch - Mating Interface (mm) 2.50 mm, 3.00 mm  
 Polarized to Mating Part Yes  
 Stackable No  
 Temperature Range - Operating -40°C to +105°C

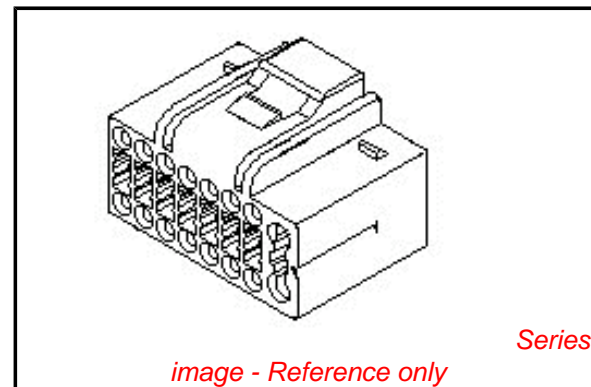
**Electrical**

Current - Maximum per Contact 10A

**Material Info**

**Reference - Drawing Numbers**

Product Specification PS-87527-001  
 Sales Drawing SD-87794-002



**EU RoHS**

**ELV and RoHS Compliant**  
**REACH SVHC Contains SVHC: No**  
**Halogen-Free Status**

**China RoHS**



**Need more information on product environmental compliance?**

Email [productcompliance@molex.com](mailto:productcompliance@molex.com)  
 For a multiple part number RoHS Certificate of Compliance, [click here](#)

Please visit the [Contact Us](#) section for any non-product compliance questions.

**Search Parts in this Series**

[87794Series](#)

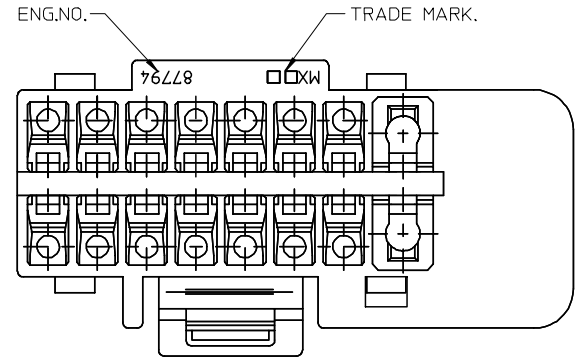
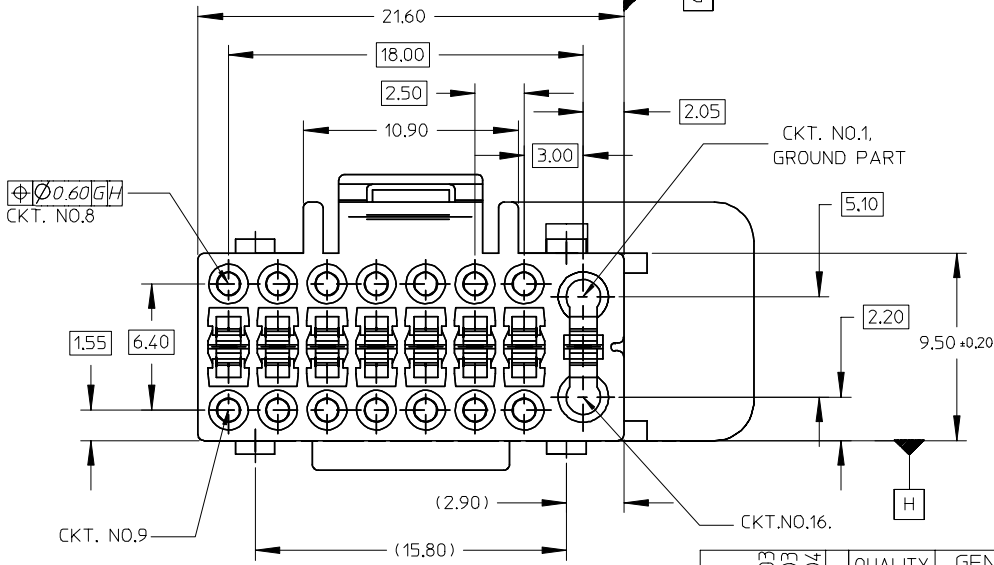
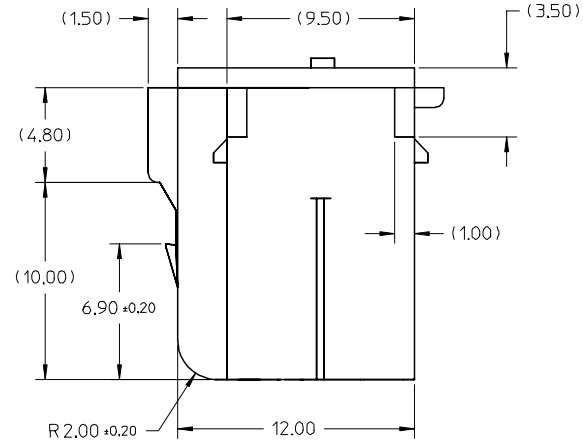
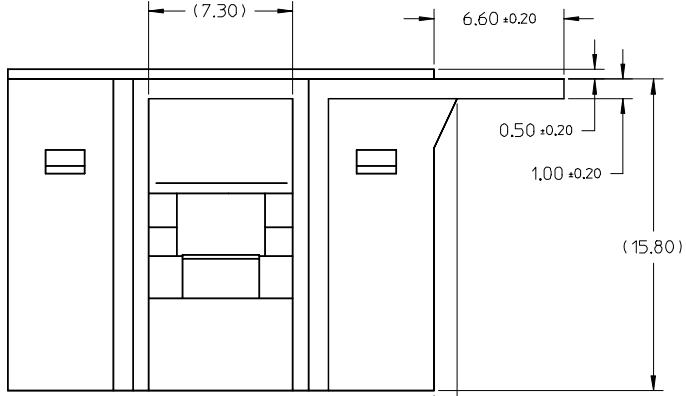
**Mates With**

[87527](#) Wire-to-Board Header

**Use With**

[50350-9001](#) Crimp Terminals, [50535-9001](#) Crimp Terminals

P/N	CKT SIZE
87794-0002	16



- NOTES :
1. MATERIAL : PPE/ PA NORYL.
  2. ACCEPTABLE TERMINAL : 50350-9\*01, 50535-9\*01.
  3. MATES WITH 87527.

EC NO: S2003-0557 DRAWN: ATSEE 2003/07/03 CHKD: KCLING 2003/07/03 APPR: SKTOH 2003/07/04	QUALITY SYMBOLS	GENERAL TOLERANCES (UNLESS SPECIFIED)	SCALE 1:1	DESIGN UNITS METRIC	THIRD ANGLE PROJECTION	REVISE ON CAD ONLY															
		<table border="1"> <thead> <tr> <th></th> <th>mm</th> <th>INCH</th> </tr> </thead> <tbody> <tr> <td>4 PLACES</td> <td>± ---</td> <td>± ---</td> </tr> <tr> <td>3 PLACES</td> <td>± ---</td> <td>± ---</td> </tr> <tr> <td>2 PLACES</td> <td>± 0.25</td> <td>± ---</td> </tr> <tr> <td>1 PLACE</td> <td>± ---</td> <td>± ---</td> </tr> </tbody> </table>		mm	INCH	4 PLACES	± ---	± ---	3 PLACES	± ---	± ---	2 PLACES	± 0.25	± ---	1 PLACE	± ---	± ---	DIMENSION STYLE MM ONLY	TITLE	2.5/3.0 W/B CONN. (WITH FUSE) RECEPTACLE HOUSING (SIDE FLANGE)	
			mm	INCH																	
	4 PLACES	± ---	± ---																		
3 PLACES	± ---	± ---																			
2 PLACES	± 0.25	± ---																			
1 PLACE	± ---	± ---																			
DRAFT WHERE APPLICABLE MUST REMAIN WITHIN DIMENSIONS	DRAWN BY ATSEE DATE 2003/05/12 CHECKED BY KCLING DATE 2003/07/01 APPROVED BY SKTOH DATE 2003/07/02	MOLEX INCORPORATED MATERIAL NO. SEE TABLE DOCUMENT NO. SD-87794-002 SHEET NO. 1 OF 1																			
REV	DESCRIPTION	THIS DRAWING CONTAINS INFORMATION THAT IS PROPRIETARY TO MOLEX INCORPORATED AND SHOULD NOT BE USED WITHOUT WRITTEN PERMISSION																			