

# **AT123S**

## **PCI Arbiter**

Release Date: Nov. 2000

## 1. General Description

AT123S is a PCI arbiter. It allows users to extend system PCI devices or slots without piecing additional circuit to simply design complexity and increase system stability. AT123S also provides STOP# input pin with that extended PCI devices is able to instruct the PCI master to prematurely end the transaction on the current data phase same as one defined in PCI specification.

## 2. Features

- PCI Arbiter
  - Extend PCI Devices from one to three
- PCI Clock Frequency
  - Support PCI Clock range from 25MHz to 66MHz

## 3. Pin Configuration

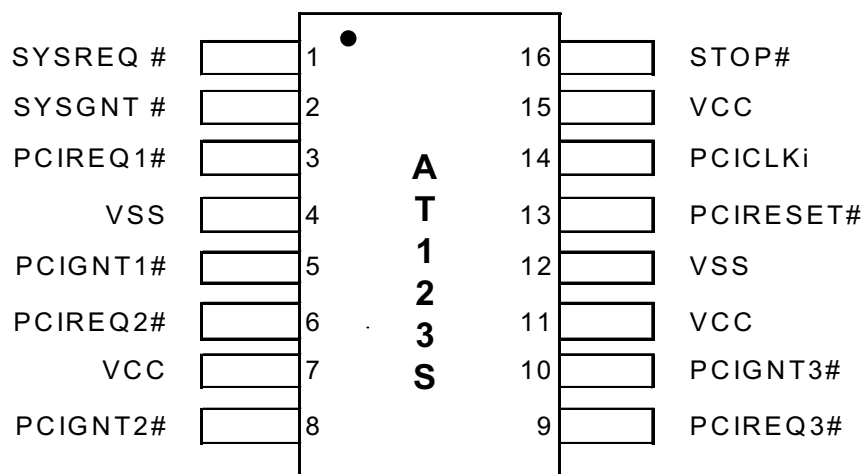
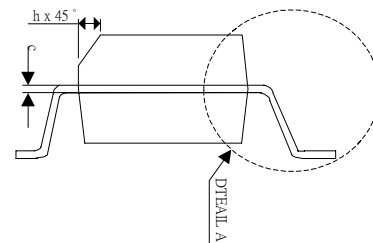
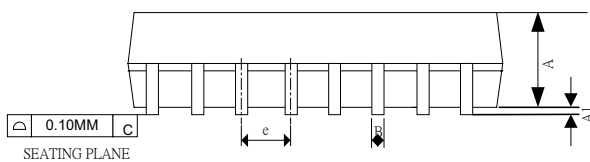
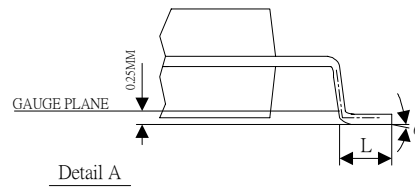
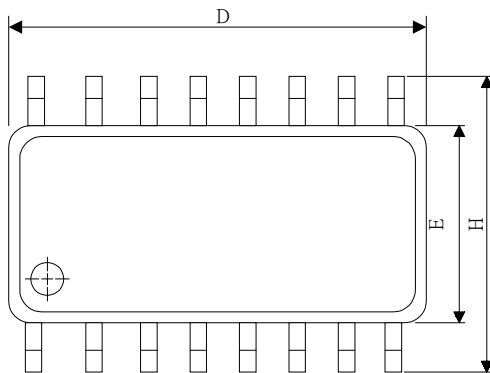


Figure 1. AT123S Pin Diagram (Top View)

### 4. Package Information SOP16pin Outline Dimension



Symbol	Dimension in inch		Dimension in mm	
	Min	Max	Min	Max
A	1.35	1.75	0.0532	0.0688
A1	0.10	0.25	0.0040	0.0098
B	0.33	0.51	0.013	0.020
C	0.19	0.25	0.0075	0.0098
e	1.27BSC		0.050BSC	
D	9.80	10.00	0.3859	0.3937
H	5.80	6.20	0.2284	0.2440
E	3.80	4.00	0.1497	0.1574
L	0.40	1.27	0.016	0.050
h	0.25	0.50	0.0099	0.0196
theta	0°	8°	0°	8°
JEDEC	MS-012(AC)			

\*NOTES: DIMENSION "D" DOES NOT INCLUDE MOLD FLASH, PROTRUSIONS OR GATE BURRS.

MOLD FLASH, PROTRUSIONS AND GATE BURRS SHALL NOT EXCEED 0.15 MM (0.006 INCH) PER SIDE.



Technology Corporation

---

Copyright © 2000 Attansic Technology Corp.

This is a preliminary information release. All specifications are subject to change without notice. The materials contained in this document replace all previous documentation issued for the related products included herein. Please contact Attansic Technology Corp. for the latest documents.

Attansic is the trademark of Attansic Technology Corp.

All specifications are subject to change without notice.

Additional copies of this document or other Attansic literatures may be obtained from:

**No. 50, Kuang-Ming 9th Rd.,  
Chu-Pei, Hsin-Chu Hsien,  
Taiwan, R. O. C.**

**Tel: 886-3-5545660  
Fax: 886-3-5545661**

If you have any marketing or sales questions or further information, please contact:

**Andy Tu:**

**E-mail: [andy\\_tu@attansic.com.tw](mailto:andy_tu@attansic.com.tw)**

**Tel: 886-3-5545660 (105)**

**Fax: 886-3-5545661**

**Mike Chang:**

**E-mail: [mike\\_chang@attansic.com.tw](mailto:mike_chang@attansic.com.tw)**

**Tel: 886-3-5545660 (109)**

**Fax: 886-3-5545661**

To find out more about Attansic, visit our World Wide Web address at:

**<http://www.attansic.com.tw/>**