

**PLEASE CHECK WWW.MOLEX.COM FOR LATEST PART INFORMATION**

**Part Number:** [0942130101](#)  
**Status:** **Active**  
**Description:** Quick Disconnect, Male PCB Flag, Tab 6.35mm (.250") x 0.81mm (.032")

**Documents:**

[3D Model](#) [RoHS Certificate of Compliance \(PDF\)](#)  
[Drawing \(PDF\)](#)

**General**

Product Family Quick Disconnects  
 Series [94213](#)  
 Crimp Quality Equipment Yes  
 Product Name PCB Tab  
 Type Quick Disconnect

**Physical**

Barrel Type N/A  
 Gender Male  
 Glow-Wire Compliant No  
 Insulation None  
 Lock to Mating Part No  
 Material - Metal Brass  
 Material - Plating Mating Tin  
 Material - Plating Termination Tin  
 Orientation PCB Flag Tab  
 Packaging Type Bag  
 Plating min: Mating (µin) 100  
 Plating min: Mating (µm) 2.5  
 Plating min: Termination (µin) 100  
 Plating min: Termination (µm) 2.5  
 Polarized to Mating Part N/A  
 Tab Thickness N/A  
 Tab Width N/A  
 Termination Interface: Style Through Hole  
 Wire Size AWG N/A

**Electrical**

Voltage - Maximum N/A

**Material Info**

**Reference - Drawing Numbers**

Sales Drawing SD-94213-005

**EU RoHS**

**ELV and RoHS  
 Compliant**  
**REACH SVHC  
 Contains SVHC: No**  
**Halogen-Free  
 Status**  
**Halogen-Free**

**China RoHS**



**Need more information on product  
 environmental compliance?**

Email [productcompliance@molex.com](mailto:productcompliance@molex.com)  
 For a multiple part number RoHS Certificate of  
 Compliance, [click here](#)

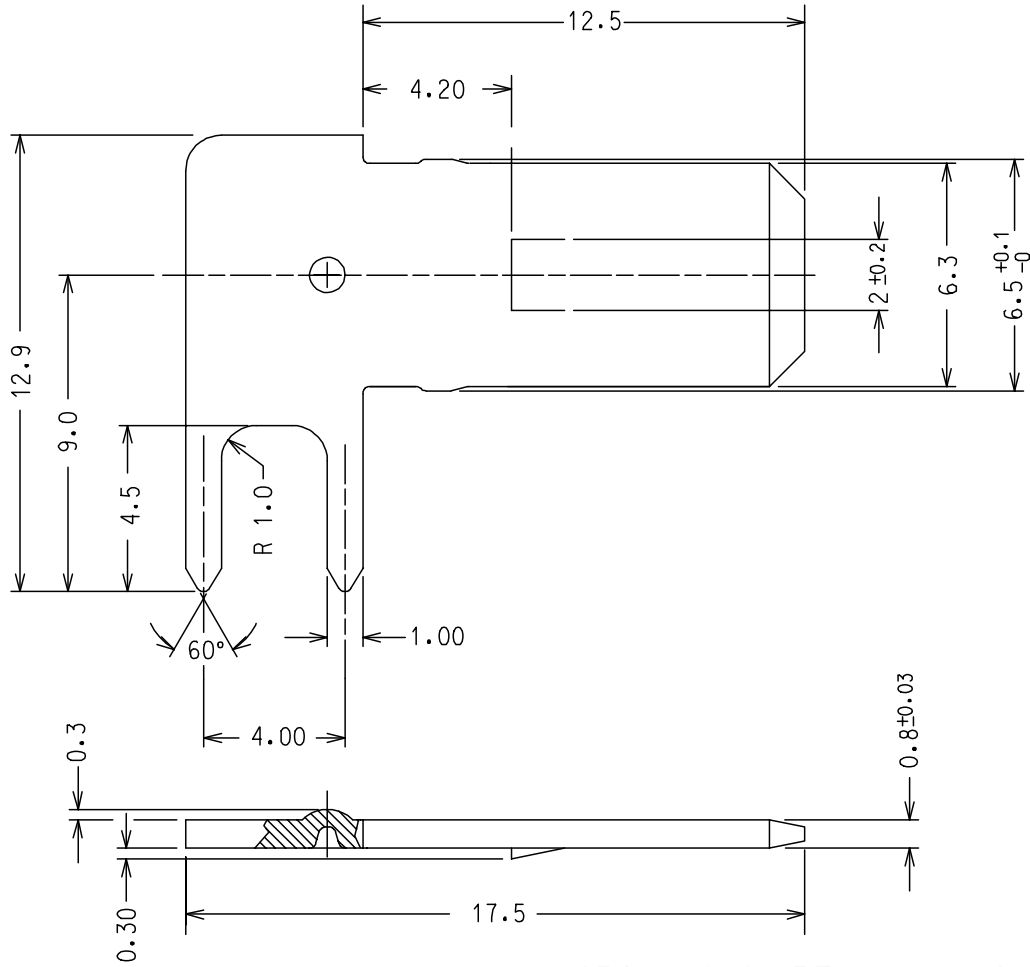
Please visit the [Contact Us](#) section for any  
 non-product compliance questions.

**Search Parts in this Series**

[94213Series](#)

**Use With**

[94030](#)



MATERIALE: OTTONE OT 67  
 MATERIAL: BRASS  
 FINITURA: STAGNATO (saldabile)  
 PLATING: TIN PLATED

SPQ = 10000 PZ.

Std.Descr.: "6.3x0.8 FOR PCB MALE TERMINAL"

|  |                  |   |  |       |   |                              |  |                        |                        |  |
|--|------------------|---|--|-------|---|------------------------------|--|------------------------|------------------------|--|
| ENTER DESCRIPTION<br>EC NO: Z2007-0187<br>DRWN:FGOTTARD 2007/05/14<br>CHKD:LSANTESSO 2007/05/14<br>APPR:GZUIN 2007/05/17 | DESCRIPTION<br>A | QUALITY SYMBOLS                             | GENERAL TOLERANCES (UNLESS SPECIFIED)                |       | DIMENSION STYLE<br>MM ONLY  |                              | SCALE<br>5:1                             | DESIGN UNITS<br>METRIC | FIRST ANGLE PROJECTION |  |
|  |                  | $\blacktriangledown = 0$<br>$\triangle = 0$ | mm   | INCH  | DRAWN BY<br>FGOTTARDO   | DATE<br>1992/10/05           | TITLE<br>6.3 X 0.8 FOR PCB MALE TERMINAL |                        |                        |  |
|  |                  |   | 4 PLACES ± ---                                       | ± --- | CHECKED BY  | DATE                         |  |                        |                        |  |
|  |                  |   | 3 PLACES ± ---                                       | ± --- | APPROVED BY<br>MPREVIATO  | DATE<br>1992/10/05           | MOLEX MOLEX INCORPORATED                 |                        |                        |  |
|  |                  |   | 2 PLACES ± 0.10                                      | ± --- | MATERIAL NO.<br>94213-0101  | DOCUMENT NO.<br>SD-94213-005 |  |                        |                        |  |
|  | 1 PLACE ± 0.15   | ± ---                                       | DRAFT WHERE APPLICABLE MUST REMAIN WITHIN DIMENSIONS |       | THIS DRAWING CONTAINS INFORMATION THAT IS PROPRIETARY TO MOLEX INCORPORATED AND SHOULD NOT BE USED WITHOUT WRITTEN PERMISSION |                              |  |                        |                        |  |
|  | ANGULAR ± ---°   |   |  |       |   |                              |  |                        |                        |  |