

# Monolithic crystal filter

## MQF10.7-0750/14



### Application

- 6 pol filter
- i.f.- filter
- use in mobile and stationary transceivers

### Limiting values

		Unit	Value
Center frequency	$f_0$	MHz	10.7
Insertion loss		dB	$\leq 3.5$
Pass band at 3.0 dB		kHz	$\pm 3.75$
Ripple in pass band	$f_0 \pm 3.00$ kHz	dB	$\leq 2.0$
Stop band attenuation	$f_0 \pm 8.75$ kHz	dB	$\geq 45$
	$f_0 \pm 12.5$ kHz	dB	$> 65$
Alternate attenuation	$f_0 \pm 12.5 \dots 300$ kHz	dB	$> 65$

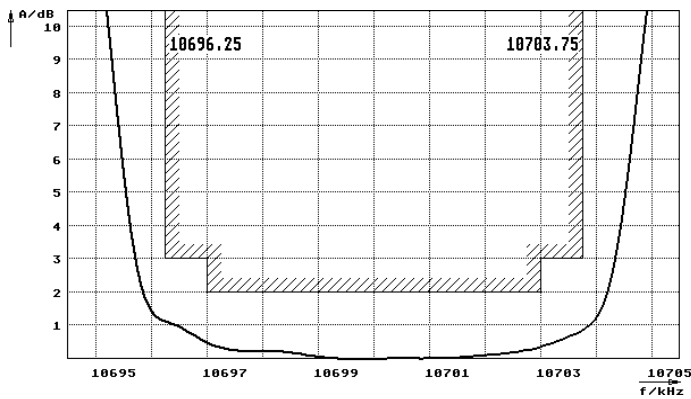
### Terminating impedance Z

R1    C1	Ohm/pF	1600    3.5
R2    C2	Ohm/pF	1600    3.5

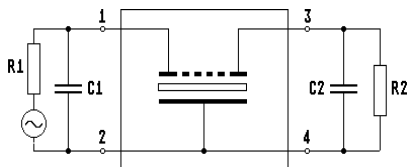
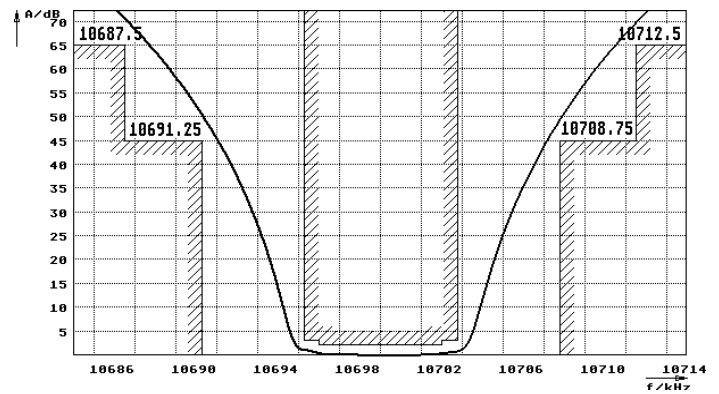
Operating temp. range	$^{\circ}\text{C}$	-20... +70
-----------------------	--------------------	------------

### Characteristics MQF10.7-0750/14

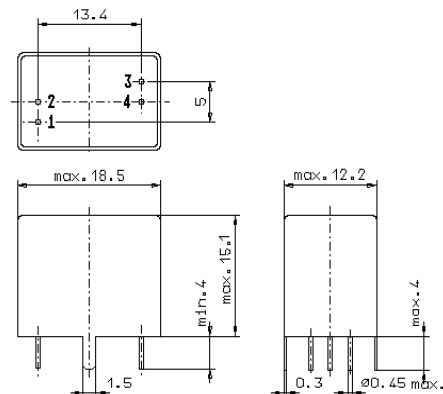
#### Pass band



#### Stop band



Pin connections: 1 Input  
2 Input-E  
3 Output  
4 Output-E



GV5.1