

**PLEASE CHECK WWW.MOLEX.COM FOR LATEST PART INFORMATION**

**Part Number:** [0015244744](#)

**Status:** **Active**

**Overview:** Disk Drive Power Connector

**Description:** 5.08mm (.200") Pitch Disk Drive Power Connection System Header, Vertical, Through Hole, 4 Circuits, Lead-free, 3.58mm (.141") PC Tail Length, with PCB Locator Peg

**Documents:**

[3D Model](#)

[Product Specification PS-8981-4V4/4R1-P \(PDF\)](#)

[Drawing \(PDF\)](#)

[RoHS Certificate of Compliance \(PDF\)](#)

**Agency Certification**

CSA LR19980

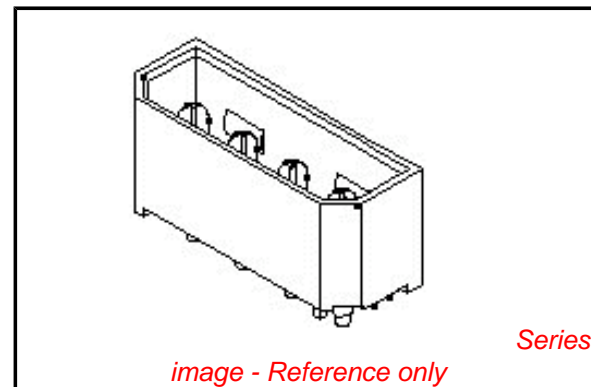
UL E29179

**General**

Product Family PCB Headers  
Series [8981](#)  
Application Wire-to-Board  
Overview [Disk Drive Power Connector](#)  
Product Name Disk Drive Power

**Physical**

Breakaway No  
Circuits (Loaded) 4  
Circuits (maximum) 4  
Color - Resin Black  
Durability (mating cycles max) 25  
First Mate / Last Break No  
Flammability 94V-0  
Glow-Wire Compliant No  
Guide to Mating Part No  
Keying to Mating Part None  
Lock to Mating Part Yes  
Mated Height (in) 0.944 In  
Mated Height (mm) 23.99 mm  
Material - Metal Phosphor Bronze  
Material - Plating Mating Tin  
Material - Plating Termination Tin  
Material - Resin High Temperature Thermoplastic  
Number of Rows 1  
Orientation Vertical  
PC Tail Length (in) 0.141 In  
PC Tail Length (mm) 3.58 mm  
PCB Locator Yes  
PCB Retention None  
PCB Thickness Recommended (in) 0.062 In  
PCB Thickness Recommended (mm) 1.60 mm  
Packaging Type Tray  
Pitch - Mating Interface (in) 0.200 In  
Pitch - Mating Interface (mm) 5.08 mm  
Plating min: Mating (µin) 101.6  
Plating min: Mating (µm) 2.54  
Plating min: Termination (µin) 101.6  
Plating min: Termination (µm) 2.54  
Polarized to Mating Part Yes  
Polarized to PCB Yes



**EU RoHS**

**ELV and RoHS Compliant**

**REACH SVHC**

Not Reviewed

**Halogen-Free**

**Status**

**Not Halogen-Free**

**China RoHS**



**Need more information on product environmental compliance?**

Email [productcompliance@molex.com](mailto:productcompliance@molex.com)  
For a multiple part number RoHS Certificate of Compliance, [click here](#)

Please visit the [Contact Us](#) section for any non-product compliance questions.

**Search Parts in this Series**

[8981Series](#)

**Mates With**

[15244048](#) (8981-4P) Disk Drive Power Connection System Female Crimp Housing with Terminal [02081201](#) (8980-3C) or [02081202](#) (8980-3L)

Shrouded	Fully
Stackable	No
Surface Mount Compatible (SMC)	Yes
Temperature Range - Operating	-40°C to +85°C
Termination Interface: Style	Through Hole

**Electrical**

Current - Maximum per Contact	10A
Voltage - Maximum	250V

**Solder Process Data**

Duration at Max. Process Temperature (seconds)	10
Lead-free Process Capability	SMC & Wave Capable (TH only)
Max. Cycles at Max. Process Temperature	1
Process Temperature max. C	265

**Material Info**

Old Part Number	A-8981-4V7-LF
-----------------	---------------

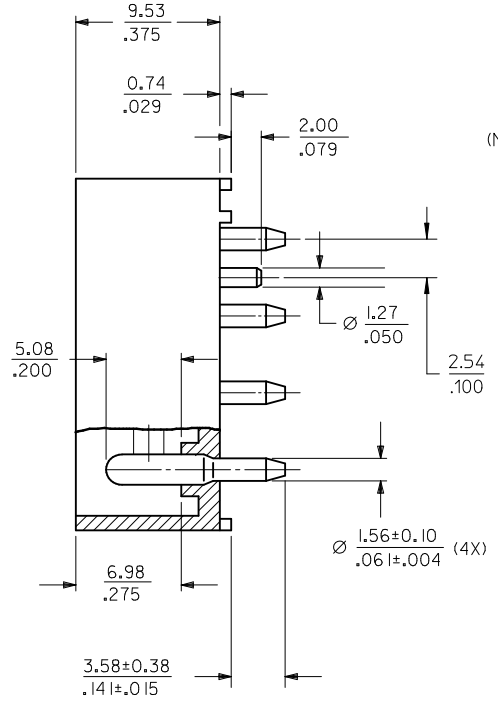
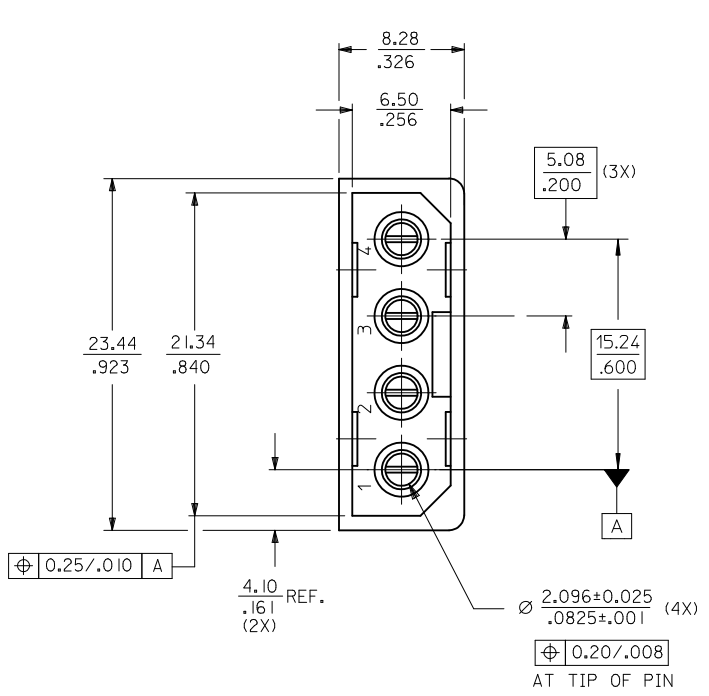
**Reference - Drawing Numbers**

Product Specification	PS-8981-4V4/4R1-P
Sales Drawing	SD-8981-4V7

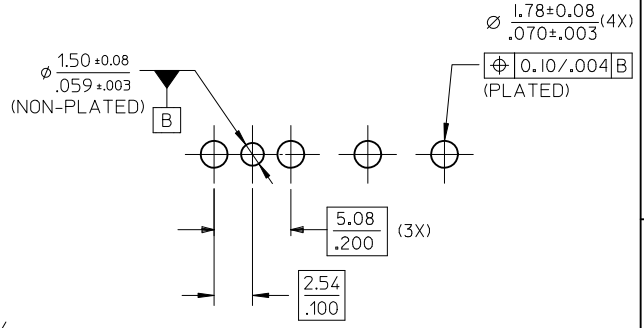
This document was generated on 04/05/2010

**PLEASE CHECK [WWW.MOLEX.COM](http://WWW.MOLEX.COM) FOR LATEST PART INFORMATION**

MAT'L NO.	ENG NO.
15-24-4744	A-8981-4V7-LF



RECOMMENDED PCB HOLE LAYOUT



- NOTES :
1. PLATING  
POSTPLATE 0.00254/.000100 MIN. TIN  
OVER 0.00127/.000050 MIN. NICKEL OVERALL.
  2. PART TO MATE WITH HOUSING 8981-4P2  
AND TERMINAL 8980-3\*.
  3. PRODUCT SPEC PS-8981-4V4/4R1-P APPLIES.
  4. MATERIAL:  
HOUSING - PCT, GLASS FILLED, UL94V-0  
COLOR BLACK  
TERMINAL - PHOS BRONZE

ADD PEG DIMENSION EC NO: S2010-0692 DRWN:SKANG CHKD:ATSEE APPR:MLONG 2010/02/11 2010/02/18 2010/02/19	QUALITY SYMBOLS	GENERAL TOLERANCES (UNLESS SPECIFIED)	DIMENSION STYLE	SCALE	DESIGN UNITS	THIRD ANGLE PROJECTION
	▽=0 ∇=0	mm INCH 4 PLACES ± --- ± --- 3 PLACES ± --- ± .008 2 PLACES ± 0.20 ± --- 1 PLACE ± --- ± --- ANGULAR ± 3 °	MM/IN	NTS	METRIC	
	DESCRIPTION	DRAFT WHERE APPLICABLE MUST REMAIN WITHIN DIMENSIONS	DRAWN BY DATE	TITLE		
	REV		SKTOH 1992/04/28	POWER CONNECTOR, 4 CKTS VERTICAL MOUNT		
D2		CHECKED BY DATE	MOLEX MOLEX INCORPORATED			
		GWANG 1992/04/28	SD-8981-4V7			
		APPROVED BY DATE	SHEET NO.			
		MLONG 2010/02/18	1 OF 1			
		MATERIAL NO.	THIS DRAWING CONTAINS INFORMATION THAT IS PROPRIETARY TO MOLEX INCORPORATED AND SHOULD NOT BE USED WITHOUT WRITTEN PERMISSION			
		SEE TABLE				