

PLEASE CHECK WWW.MOLEX.COM FOR LATEST PART INFORMATION

Part Number: [0015244742](#)

Status: **Active**

Overview: Disk Drive Power Connector

Description: 5.08mm (.200") Pitch Disk Drive Power Connection System Header, Vertical, Through Hole, 4 Circuits, Lead-free, 2.12mm (.083") PC Tail Length, with PCB Locator Peg

Documents:

[3D Model](#)

[Drawing \(PDF\)](#)

[Product Specification PS-8981-4V4/4R1-P \(PDF\)](#)

[RoHS Certificate of Compliance \(PDF\)](#)

Agency Certification

CSA LR19980

UL E29179

General

Product Family PCB Headers

Series [8981](#)

Application Wire-to-Board

Overview [Disk Drive Power Connector](#)

Product Name Disk Drive Power

Physical

Breakaway No

Circuits (Loaded) 4

Circuits (maximum) 4

Color - Resin Black

Durability (mating cycles max) 25

First Mate / Last Break No

Flammability 94V-0

Glow-Wire Compliant No

Guide to Mating Part No

Keying to Mating Part None

Lock to Mating Part Yes

Mated Height (in) 0.944 In

Mated Height (mm) 23.99 mm

Material - Metal Phosphor Bronze

Material - Plating Mating Tin

Material - Plating Termination Tin

Material - Resin High Temperature Thermoplastic

Number of Rows 1

Orientation Vertical

PC Tail Length (in) 0.083 In

PC Tail Length (mm) 2.12 mm

PCB Locator Yes

PCB Retention None

PCB Thickness Recommended (in) 0.062 In

PCB Thickness Recommended (mm) 1.60 mm

Packaging Type Tray

Pitch - Mating Interface (in) 0.200 In

Pitch - Mating Interface (mm) 5.08 mm

Plating min: Mating (µin) 101.6

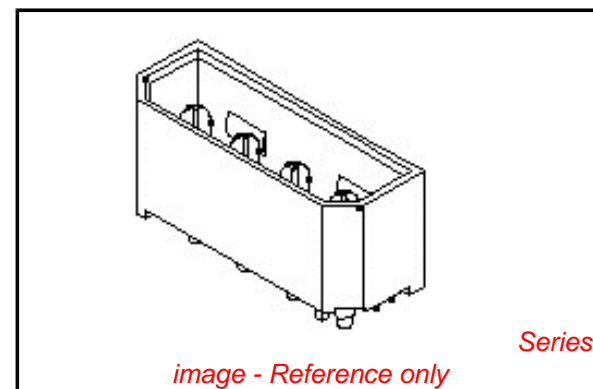
Plating min: Mating (µm) 2.54

Plating min: Termination (µin) 101.6

Plating min: Termination (µm) 2.54

Polarized to Mating Part Yes

Polarized to PCB Yes



EU RoHS

**ELV and RoHS
Compliant**

REACH SVHC

Not Reviewed

Halogen-Free

Status

Not Halogen-Free

China RoHS



**Need more information on product
environmental compliance?**

Email productcompliance@molex.com

For a multiple part number RoHS Certificate of Compliance, [click here](#)

Please visit the [Contact Us](#) section for any non-product compliance questions.

Search Parts in this Series

[8981Series](#)

Mates With

[15244048](#) (8981-4P) Disk Drive Power Connection System Female Crimp Housing with Terminal [02081201](#) (8980-3C) or [02081202](#) (8980-3L)

Shrouded	Fully
Stackable	No
Surface Mount Compatible (SMC)	Yes
Temperature Range - Operating	-40°C to +85°C
Termination Interface: Style	Through Hole

Electrical

Current - Maximum per Contact	10A
Voltage - Maximum	250V

Solder Process Data

Duration at Max. Process Temperature (seconds)	10
Lead-free Process Capability	SMC & Wave Capable (TH only)
Max. Cycles at Max. Process Temperature	1
Process Temperature max. C	265

Material Info

Old Part Number	A-8981-4V6-LF
-----------------	---------------

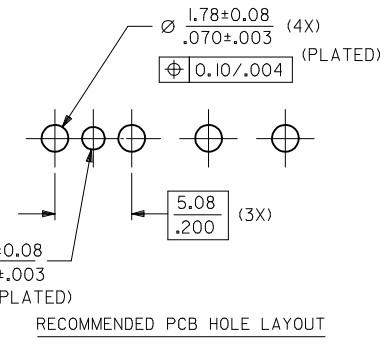
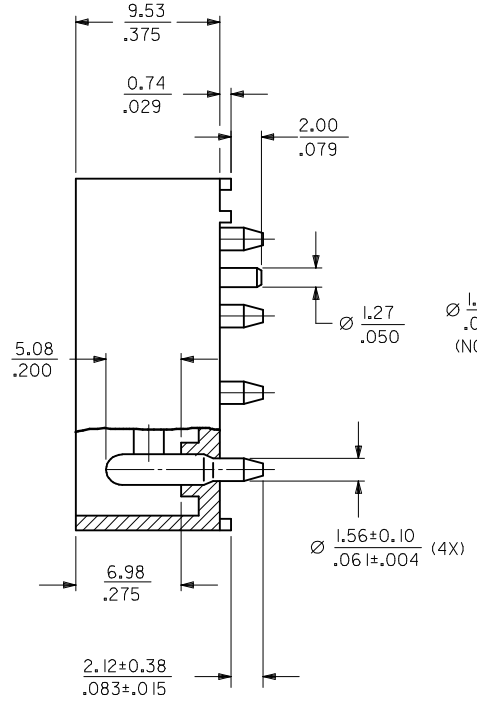
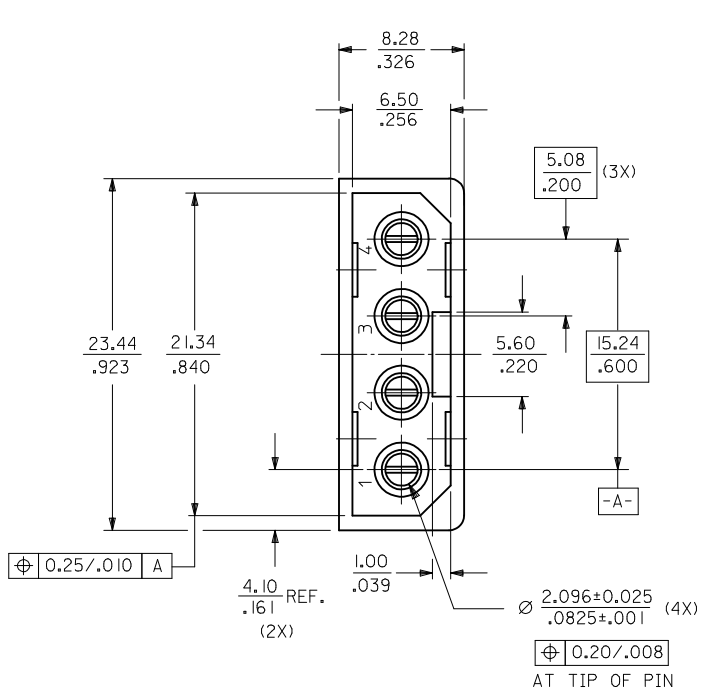
Reference - Drawing Numbers

Product Specification	PS-8981-4V4/4R1-P
Sales Drawing	SD-8981-4V6

This document was generated on 04/05/2010

PLEASE CHECK WWW.MOLEX.COM FOR LATEST PART INFORMATION

MAT'L NO.	ENG NO.
15-24-4742	A-8981-4V6-LF



- NOTES :
- PLATING
POSTPLATE 0.00254/.000100 MIN. TIN
OVER 0.00127/.000050 MIN. NICKEL OVERALL.
 - PART TO MATE WITH HOUSING 8981-4P2
AND TERMINAL 8980-3*.
 - PRODUCT SPEC PS-8981-4V4/4R1-P APPLIES.
 - MATERIAL:
HOUSING - PCT, GLASS FILLED, UL94V-0
COLOR BLACK
TERMINAL - PHOS BRONZE

ADD CKT INDICATION EC NO: S2009-0836 DRWN:SKANG CHKD:ATSEE APPR:MLONG	2009/05/08 2009/05/08 2009/05/11	DESCRIPTION REV	QUALITY SYMBOLS	GENERAL TOLERANCES (UNLESS SPECIFIED)	DIMENSION STYLE	SCALE	DESIGN UNITS	THIRD ANGLE PROJECTION
			▽=0	mm INCH	MM/IN	NTS	METRIC	
			∠=0	4 PLACES ± --- ± ---	DRAWN BY DATE			TITLE
				3 PLACES ± --- ± .008	CHECKED BY DATE			POWER CONNECTOR, 4 CKTS VERTICAL MOUNT
	2 PLACES ± 0.20 ± ---	APPROVED BY DATE			MATERIAL NO.	DOCUMENT NO.	SHEET NO.	
	1 PLACE ± --- ± ---				SD-8981-4V6		1 OF 1	
	ANGULAR ± 3 °				THIS DRAWING CONTAINS INFORMATION THAT IS PROPRIETARY TO MOLEX INCORPORATED AND SHOULD NOT BE USED WITHOUT WRITTEN PERMISSION			