

**PLEASE CHECK WWW.MOLEX.COM FOR LATEST PART INFORMATION**

**Part Number:** [0005060301](#)  
**Status:** **Active**  
**Overview:** [flat blade](#)  
**Description:** Flat Blade Crimp Terminal, Series 2176, Female, With Tin (Sn) Plated Brass Contact, With Detent, 14-22 AWG (or 18 AWG Double Crimp), Reel Packaged

**Documents:**

[Drawing \(PDF\)](#) [RoHS Certificate of Compliance \(PDF\)](#)  
[Product Specification PSX-05-06-1 \(PDF\)](#)

**General**

Product Family	Crimp Terminals
Series	<a href="#">2176</a>
Comments	(2) 18 AWG
Crimp Quality Equipment	Yes
Overview	<a href="#">flat blade</a>
Product Name	Flat Blade

**Physical**

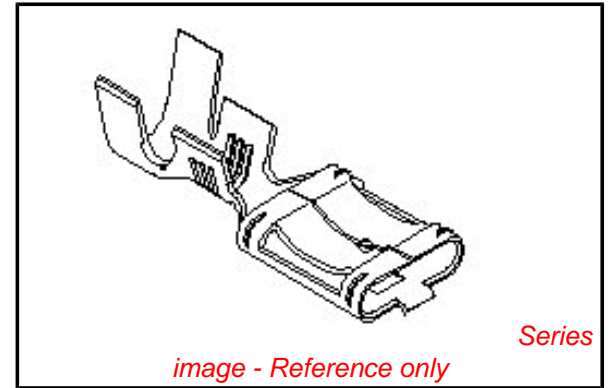
Gender	Female
Material - Metal	Brass
Material - Plating Mating	Tin
Material - Plating Termination	Tin
Packaging Type	Reel
Plating min: Mating (µin)	20
Plating min: Mating (µm)	0.50
Plating min: Termination (µin)	20
Plating min: Termination (µm)	0.50
Wire Insulation Diameter	.79mm (.031") max.
Wire Size AWG	14, 16, 18, 20, 22
Wire Size mm <sup>2</sup>	N/A

**Material Info**

Old Part Number	2176-T
-----------------	--------

**Reference - Drawing Numbers**

Product Specification	PSX-05-06-1
Sales Drawing	SD-2176*



*image - Reference only*

**EU RoHS**

**ELV and RoHS  
Compliant**  
**REACH SVHC  
Contains SVHC: No  
Halogen-Free  
Status**

**China RoHS**



**Need more information on product  
environmental compliance?**

Email [productcompliance@molex.com](mailto:productcompliance@molex.com)  
 For a multiple part number RoHS Certificate of Compliance, [click here](#)

Please visit the [Contact Us](#) section for any non-product compliance questions.

**Search Parts in this Series**

[2176Series](#)

**Mates With**

4.75mm (.187") Male Tab

**Application Tooling | FAQ**

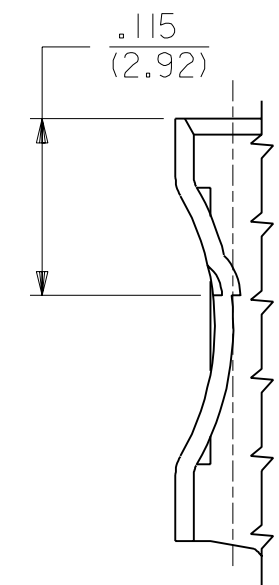
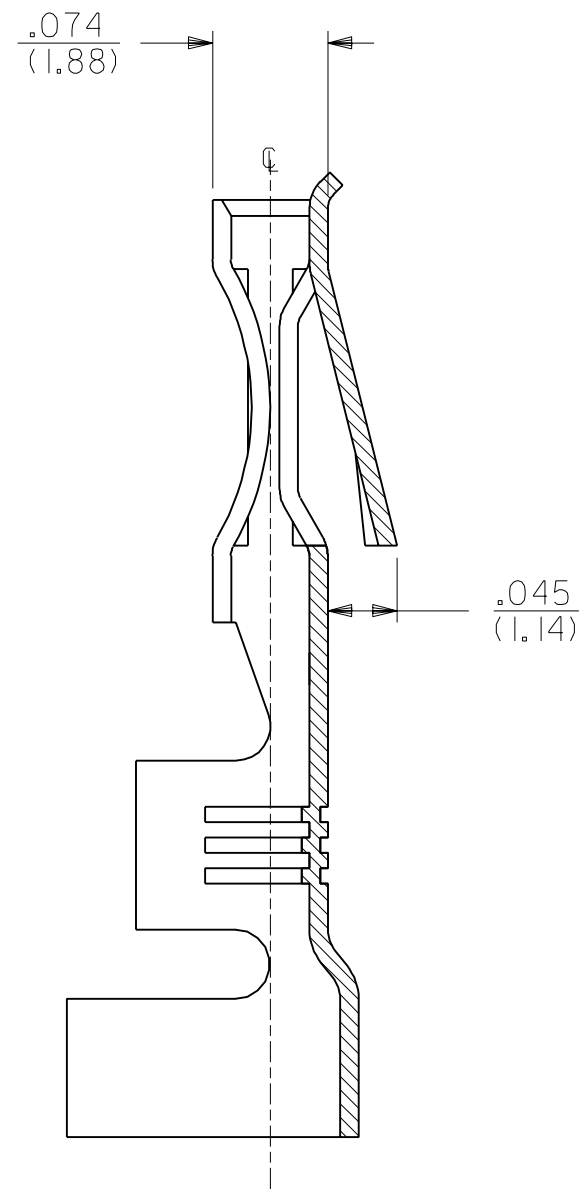
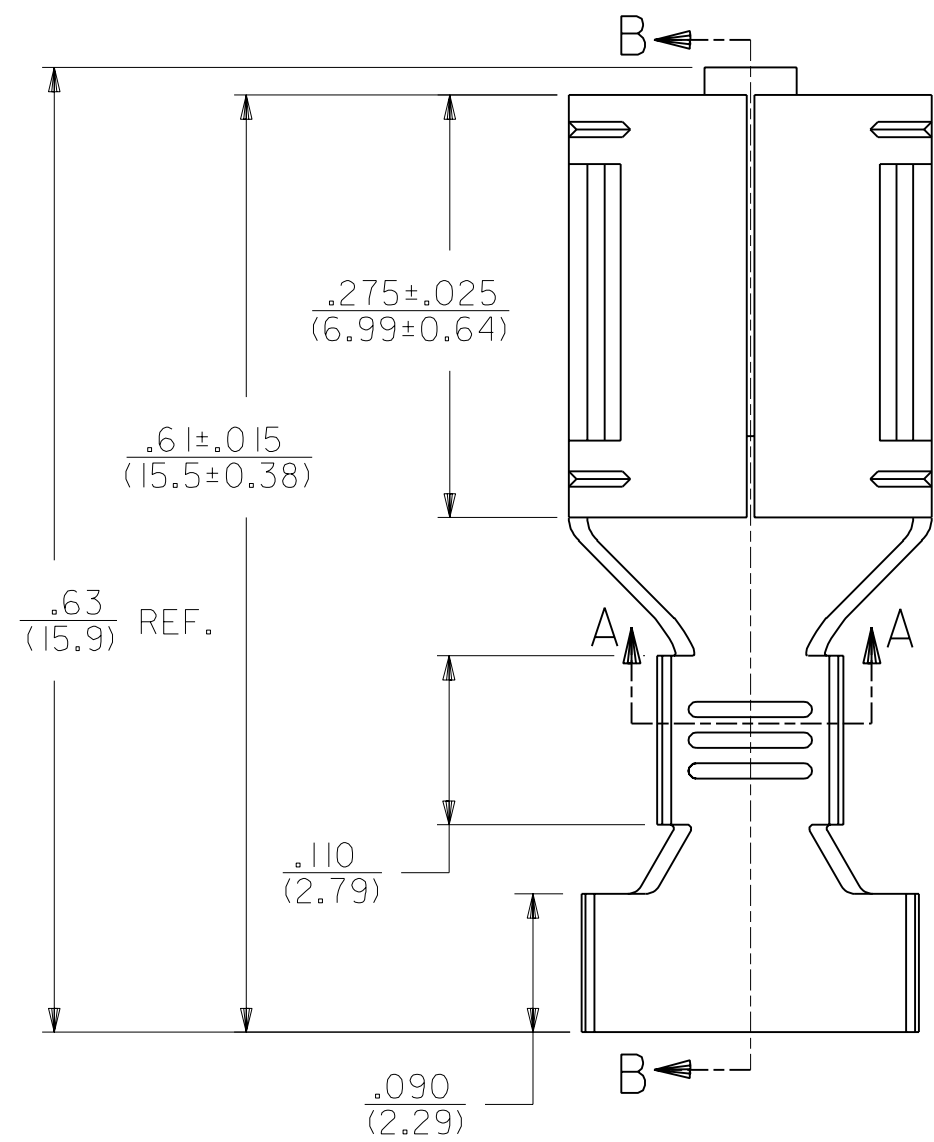
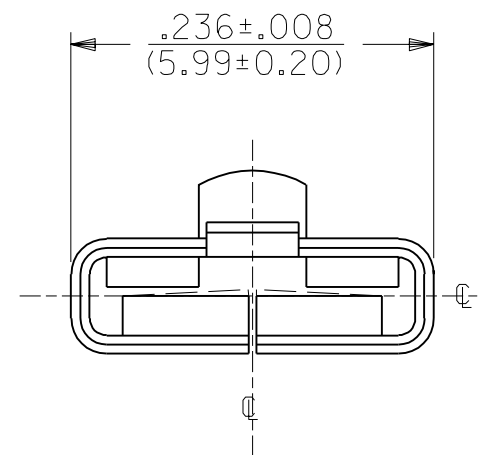
*Tooling specifications and manuals are found by selecting the products below. Crimp Height Specifications are then contained in the Application Tooling Specification document.*

**Global**

Description	Product #
Mini-Mac™ Applicator	<a href="#">0638822000</a>
Hand Crimper	<a href="#">0011010101</a>
Terminator Die	<a href="#">0011402015</a>

2176

PART NO.	ENG. NO.	DESCRIPTION
05-06-0301	2176-T	TIN PLATE
05-06-0303	2176-AT	WITHOUT DETENT, TIN PLATED
NOT TOOLED	X-2176-999A	WITHOUT DETENT, UNPLATED
05-06-0302	2176-(P90)DL	WITH DETENT, PLATED, LOOSE
05-06-0304	2176-(P90)DAL	WITHOUT DETENT, PLATED, LOOSE

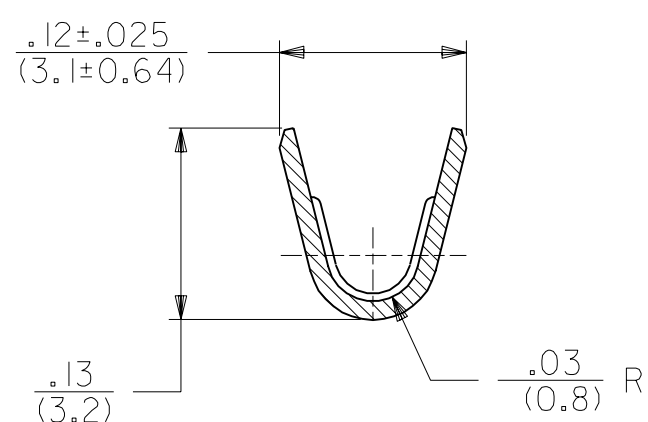
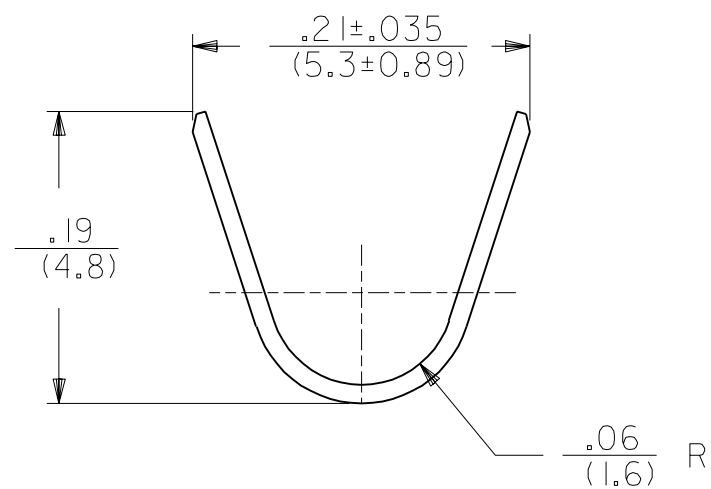


DETENT LOCATION  
SCALE 8:1

SECTION B-B

NOTES:

1. CRIMP FOR #14 THRU #22 GA. WIRE. ALSO (2) #18 GA. WIRE WITH .03(0.79) THK. INSULATION.
2. MATERIAL: .010/(0.25) THK. 70/30 BRASS ALLOY. PRE-TIN PLATED.
3. PRODUCT SPECIFICATION 05-06-1 APPLIES.



SECTION A-A  
SCALE 8:1

MFG.	SH.	REV.	LTR.	REVISIONS
E				REDRAWN ON CAD PER UCR2000-0804 00/07/13 ES

DIMENSIONS SHOWN (METRIC) INCH	
UNLESS OTHERWISE SPECIFIED TOLERANCES: ANGULAR ± 1/2°	
3 PLACE	± .010 ---
2 PLACE	± .014 ± 0.25
1 PLACE	--- ± 0.35

▽ = 0 ▼ = 0 REVISE ONLY ON CAD SYSTEM

TITLE: TERMINAL FOR .020/(0.51) X .187/(4.75) SPADE

MOLEX INCORPORATED SHEET NO. DATE LISLE, ILL. 60532 U.S.A. 1 OF 1 92/10/26

DRWG. BY: MAB CHK'D. BY: KBP APP'D. BY: RAS SCALE: 8:1

SEE CHART SD-2176-\*

THIS DRAWING CONTAINS INFORMATION THAT IS PROPRIETARY TO MOLEX INC. AND SHOULD NOT BE USED WITHOUT WRITTEN PERMISSION. DIV. CP C