

# PAW-1024

# 40-860 MHz.

## 28 dB.

## CATV Ultra-linear Amplifier

# tyco

## Electronics

# M/A-COM



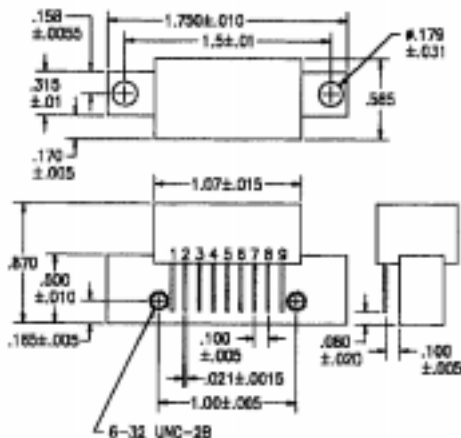
### Features: (typical values)

- Ultra High Linearity
- Low Noise Figure
- Rugged Construction
- Operation over a wide voltage range

### Electrical Specifications @30°C (75 ohms system)

Parameter	Typical Conditions	Min. Value	Max. Value	Units
Frequency Range		40	860	MHz.
Power Gain	f= 5 - 50 MHz.	27	31	dB.
Power Gain	f = 50 Mhz	28	30	dB.
Gain Flatness (peak to valley)	f= 40 to 860MHz.	-	1.5	dB.
Cable Equivalent Slope	f= 40 to 860 MHz.	0	3.0	dB.
Composite Triple Beat (CTB)	110 channels flat Vo=40dBmV. measured @ channel 78	-	-57	dB.
Cross Modulation (XMOD)	110 channels flat Vo=40dBmV. measured @ channel 2	-	-57	dB.
Composite 2nd Order	110 channels flat Vo=40dBmV. measured @ channel 78	-	-55	dB.
IP3/IP2	2 tone	32/52	-	dBm.
Noise Figure	@ f= 860 MHz.	-	8.5	dB.
Input/Output Return Loss	f = 40 to 860 MHz	12	-	dB.
Total Current	@ Voltage of +24v.		350	mA.

### Outline Drawings



### Maximum Ratings

- Storage Temperature ..... -40°C to +100°C
- DC Voltage ..... +28 volts
- RF Input voltage ..... 40dBmV.
- Operating Base Temperature ..... +100°C

### Pin Configuration

Pin #	Description
1	Input
2,3,7,8	Ground
5	+V
4,6	not used
9	Output