

Monolithic crystal filter

MQF20.0-0500/01



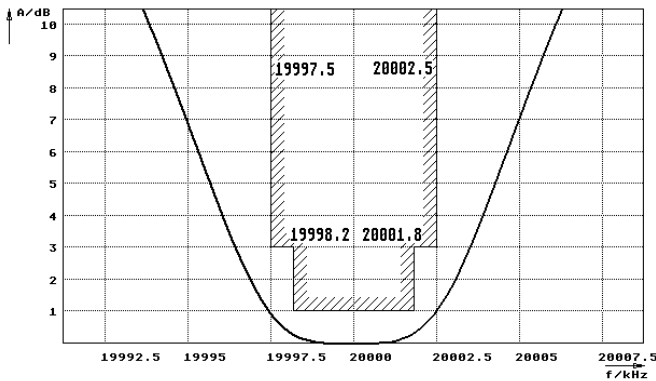
Application

- 2 pol filter
- i.f.- filter
- use in mobile and stationary transceivers

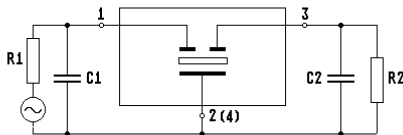
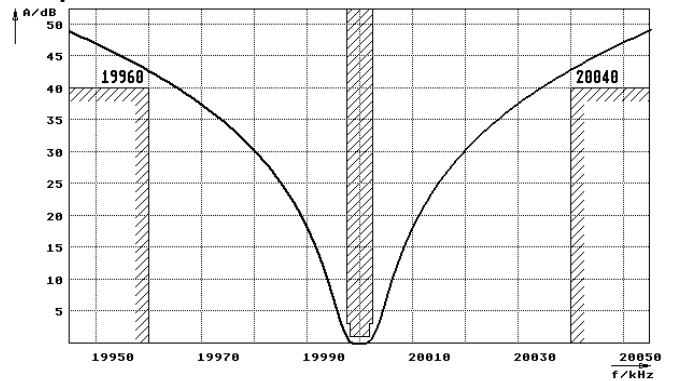
Limiting values		Unit	Value
Nominal frequency	f_0	MHz	20.0
Insertion loss		dB	< 1.0
Pass band at 3.0dB		kHz	$\pm > 2.5$
Ripple in pass band	$f_0 \pm 1.8$ kHz	dB	< 1.0
Stop band attenuation	$f_0 \pm 40$ kHz	dB	> 40
Alternate attenuation	$f_0 \pm 0.04...5$ MHz	dB	> 40
Spurious responses		dB	> 20
Terminating impedance Z			
R1 C1		Ohm/pF	850 8
R2 C2		Ohm/pF	850 8
Operating temp. range		°C	-20... +70
Storage temp. range		°C	-45... +85
Environment conditions			according to CF001

Characteristics MQF20.0-0500/01

Pass band



Stop band



- Pin connections:
- 1 Input
 - 2 Ground-Input
 - 3 Output
 - 4 Ground-Output

