

DC/DC Converter**10 Watts**

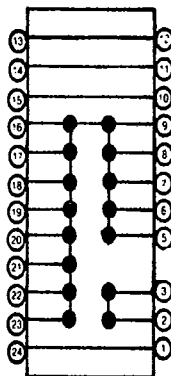
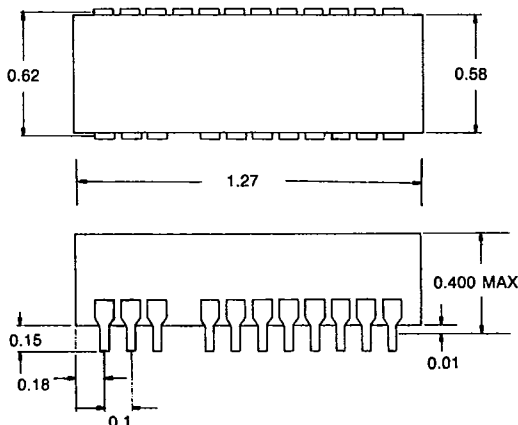
DEVICE TYPE	INPUT VOLTAGE RANGE (VDC)	INPUT CURRENT mA (MAX)	OUTPUT VOLTAGE VDC	OUTPUT CURRENT mA (MAX)	PACKAGE
DC-601 (R)	5	2857 (3333)	9	1110	D
DC-602 (R)	5	2857 (4000)	5	2000	D
DC-603 (R)	5	2857 (3333)	12	833	D
DC-604 (R)	5	2857 (3333)	15	666	D
DC-605 (R)	5	2857 (3333)	± 5	± 1000	D
DC-606 (R)	5	2857 (3333)	± 12	± 417	D
DC-607 (R)	5	2857 (3333)	± 15	± 333	D
DC-608 (R)	12	1190 (1388)	5	2000	D
DC-609 (R)	12	1190 (1388)	9	1110	D
DC-610 (R)	12	1190 (1388)	12	833	D
DC-611 (R)	12	1190 (1388)	± 12	± 417	D
DC-612 (R)	12	1190 (1388)	± 15	± 333	D
DC-613 (R)	24	595 (694)	5	2000	D
DC-614 (R)	24	595 (694)	12	833	D
DC-615 (R)	24	595 (694)	15	666	D
DC-616 (R)	24	595 (694)	± 12	± 417	D
DC-617 (R)	24	595 (694)	± 15	± 333	D
DC-618 (R)	48	297 (347)	5	2000	D
DC-619 (R)	48	297 (347)	12	833	D
DC-620 (R)	48	297 (347)	15	666	D
DC-621 (R)	48	297 (347)	± 12	± 417	D
DC-622 (R)	48	297 (347)	± 15	± 333	D

PS: (R) means "Regulated"

DC/DC Converter

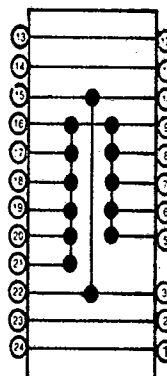
MECHANICAL DIMENSIONS AND PIN CONNECTION

PACKAGE A:



TOP VIEW OF SINGLE OUT

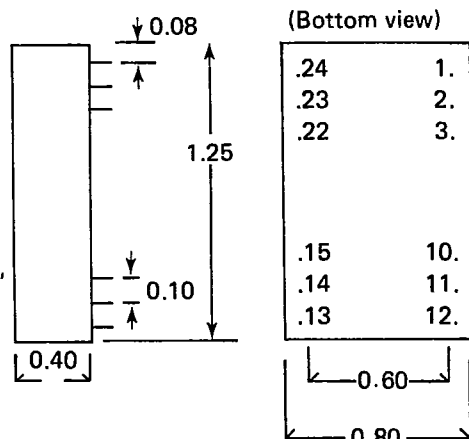
PIN
 1 +VIN
 12 -VIN
 11 +VOUT
 10 -VOUT



TOP VIEW OF DUAL OUT

PIN
 1 +VIN
 2 -VOUT
 3&10 VOUT COMMON
 11 +VOUT
 12 -VIN

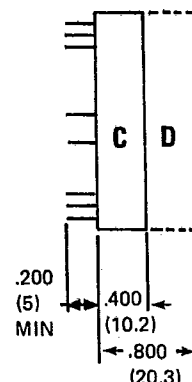
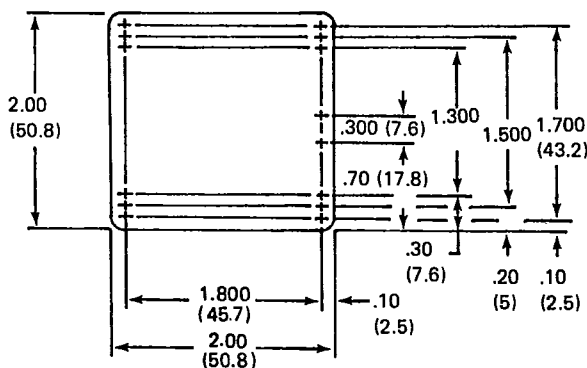
PACKAGE B:



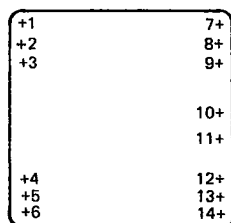
(Bottom view)

PIN	SINGLE OUTPUT	DUAL OUTPUT
1.	+ INPUT	+ INPUT
2.	NC	- OUTPUT
3.	NC	COMMON
10.	- OUTPUT	COMMON
11.	+ OUTPUT	+ OUTPUT
12.	- INPUT	- INPUT
13.	- INPUT	- INPUT
14.	+ OUTPUT	+ OUTPUT
15.	- OUTPUT	COMMON
22.	NC	COMMON
23.	NC	- OUTPUT
24.	+ INPUT	+ INPUT

PACKAGE C & D:



All Dimensions ± .020



PIN	SINGLE OUTPUT	DUAL OUTPUT
1-3	+ INPUT	+ INPUT
4-6	- INPUT	- INPUT
7-9	+ OUTPUT	+ OUTPUT
10-11	COMMON	COMMON
12-14	COMMON	- OUTPUT