

Crystal filter

QF10.7-0050/04



Application

- 4 pol filter
- i.f.- filter
- use in mobile and stationary transceivers

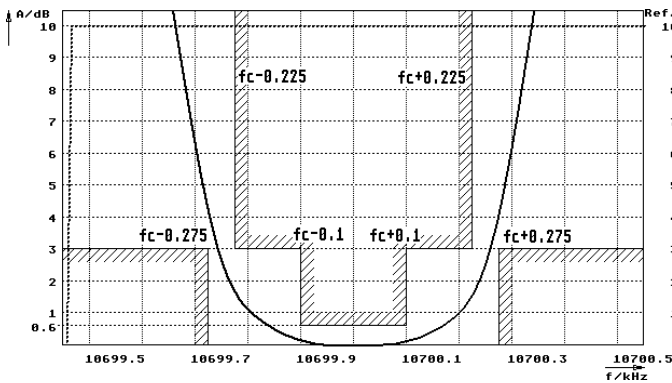
Limiting values		Unit	Value
Nominal frequency	f_0	MHz	10.7
Centre frequency	f_c	MHz	10.7 ± 75 Hz
Insertion loss		dB	< 5.0
Pass band at 3.0dB		kHz	$\pm 0.225 \dots 0.275$
Ripple in pass band	$f_c \pm 0.1$ kHz	dB	< 0.6
Stop band attenuation	$f_c \pm 2.5$ kHz	dB	> 60
Alternate attenuation		dB	> 80 except spurious
Phase tracking	$f_0 \pm 200$ Hz	°	< 15 for pairs
VSWR	$f_0 \pm 150$ Hz		< 2.0:1

Terminating impedance Z			
R1 C1		Ohm/pF	50 0
R2 C2		Ohm/pF	50 0

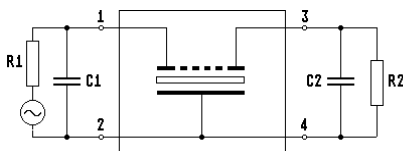
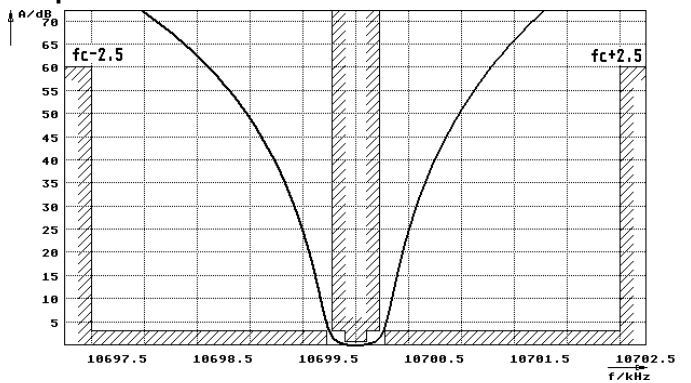
Operating temp. range	°C	+0... +50
Storage temp. range	°C	-20... +70
Environment conditions		according to CF001

Characteristics QF10.7-0050/04

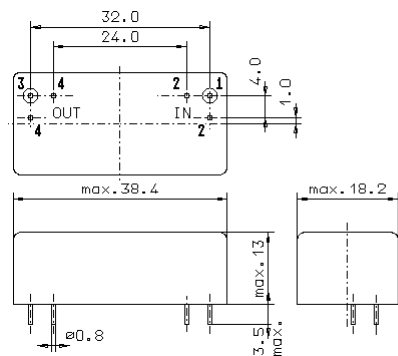
Pass band



Stop band



- Pin connections:
- 1 Input
 - 2 Ground-Input
 - 3 Output
 - 4 Ground-Output



GM17