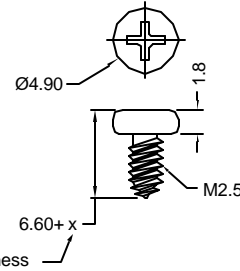


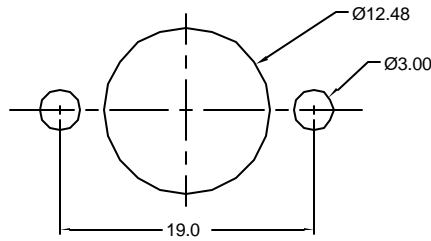
Inner Ground Shield Supports Quick Lock feature of KMDLA Series plugs

Recommended Mounting Screw



X = Panel Thickness

Recommended Panel Cutout



Contact Configuration						
# of Contacts	3	4	5	6	7	8
Wire Color	1 Black 2 Green 3 Orange	1 Black 2 Green 3 Yellow 4 Red	1 Brown 2 Black 3 Green 4 Yellow 5 Red	1 Brown 2 White 3 Black 4 Green 5 Yellow 6 Red	Not Currently Available	1 Brown 2 White 3 Black 4 Blue 5 Green 6 Yellow 7 Orange 8 Red

Materials and Finish

Shell: steel, tin plated

Contacts: phosphor bronze, tin plated

Insulator: PBT, black
UL94V-0 rated

Wire: 100mm, stripped ends,
26 AWG

Other wire lengths and termination options available, including customer specified headers. Contact Kycon for details.

Specifications

Rating: 12V DC 2amp max.

Insulation Resistance:
50 Megohm min. at 250V DC

Dielectric Strength:
250v AC for 1 minute

Contact Resistance:
30 milliohm max.

Operating Temperature:
-25°C to +80°C

Durability Rating:
5000 mating cycles min.

Insertion Force: 1.0-4.5Kg

Withdrawal Force: 0.8-3.0Kg

Connector Provides IP20 Protection
When Properly Installed



Tolerances

X.X ± 0.25
X.XX ± 0.15
Unless Stated
Otherwise

REV.	DATE	DESCRIPTION	REV. BY	CHK. BY	DRAWN BY	DATE
A1	7/8/05	New Drawing	R. Aguirre	H. MA	R. Aguirre	5/10/05

KMDPLX-xS-100

x = Number of Contacts

panel Mount Female, RoHS Compliant

Locking type, pre-wired, 100 mm wire length

