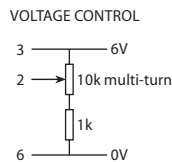


| PIN | CONNECTION |
|-----|-----------------|
| 1 | Case |
| 2 | Freq Adjustment |
| 3 | +6V output |
| 4 | RF output |
| 5 | Supply |
| 6 | Ground |



Scale 1:1

Features

- ▶ Low profile package
- ▶ Wide frequency range
- ▶ Single 12V supply (10V ~ 30V optional)
- ▶ Custom options available

Standard Models

| Freq | Specification | Ageing per day | Temperature stability | Part No |
|---------|---------------|------------------------|---------------------------------|---------|
| 5.0MHz | HCD170/BNDN | $\pm 5 \times 10^{-9}$ | $\pm 5 \times 10^{-8}$ -20+60°C | MS08226 |
| 10.0MHz | HCD170/BNDN | $\pm 5 \times 10^{-9}$ | $\pm 5 \times 10^{-8}$ -20+60°C | MA05201 |

Specifications

| Parameters | Product | Option Codes |
|---|------------------|--------------|
| | HCD170 | |
| Frequency range: 5.0 ~ 60.0MHz | ■ | |
| Ageing per day (at despatch): $< \pm 1 \times 10^{-8}$ $< \pm 5 \times 10^{-9}$ | □ ■ | A B |
| Frequency stability: $\pm 5 \times 10^{-7}$ / year max $\pm 1 \times 10^{-7}$ per 5% change in V_{DD} | ■ ■ | |
| Temperature stability: $< \pm 2 \times 10^{-7}$ $< \pm 1 \times 10^{-7}$ $< \pm 5 \times 10^{-8}$ | □ □ ■ | L M N |
| Operating temperature range: 0 to +50°C -20 to +60°C -20 to +70°C | □ ■ □ | A D F |
| Storage temperature range: -40 to +90°C | ■ | |
| Output waveform: Sine wave, 1.5V p-p $\pm 0.5V$ into 50Ω | ■ | |
| Frequency adjustment: $\pm 2 \times 10^{-5}$ typ (10MHz), +0.5 to +6.0V (sufficient for 10 years ageing min) Stabilised +6.0V supply provided | ■ | |
| Supply voltage (V_{DD}): +12.0V ($\pm 0.5V$) Other options from 10~30V | ■ □ | N specify |
| Power consumption: 4.5W max at switch on 1.0W typ when stabilised at 25°C | ■ ■ | |
| Warm up: $\pm 5 \times 10^{-8}$ after 10mins at +25°C | ■ | |
| Phase noise (@ 10.0MHz): $< -110\text{dBc/Hz}$ @ 10Hz $< -130\text{dBc/Hz}$ @ 100Hz $< -145\text{dBc/Hz}$ @ 1kHz $< -150\text{dBc/Hz}$ @ 10kHz | ■ ■ ■ ■ | |
| Shock: IEC 68-2-27 Test Ea 50G for 11ms | ■ | |
| Vibration: IEC 68-2-06 Test Fc 10-55Hz, 1.5mm. 55-500Hz, 10G | ■ | |

■ Standard. □ Optional - Please specify required code(s) when ordering

Ordering Information

Part No, or product name + option codes + frequency

eg: **HCD170/ALDN 10.0MHz**

HCD170/BNDN 16.3840MHz

Option code X (eg HCD170/X) denotes a custom specification.